



# MONTE CARLO SALOON



**ALLARD MOTOR COMPANY LTD.**

**24 - 28 CLAPHAM HIGH STREET,  
LONDON, S.W.4. - - ENGLAND**

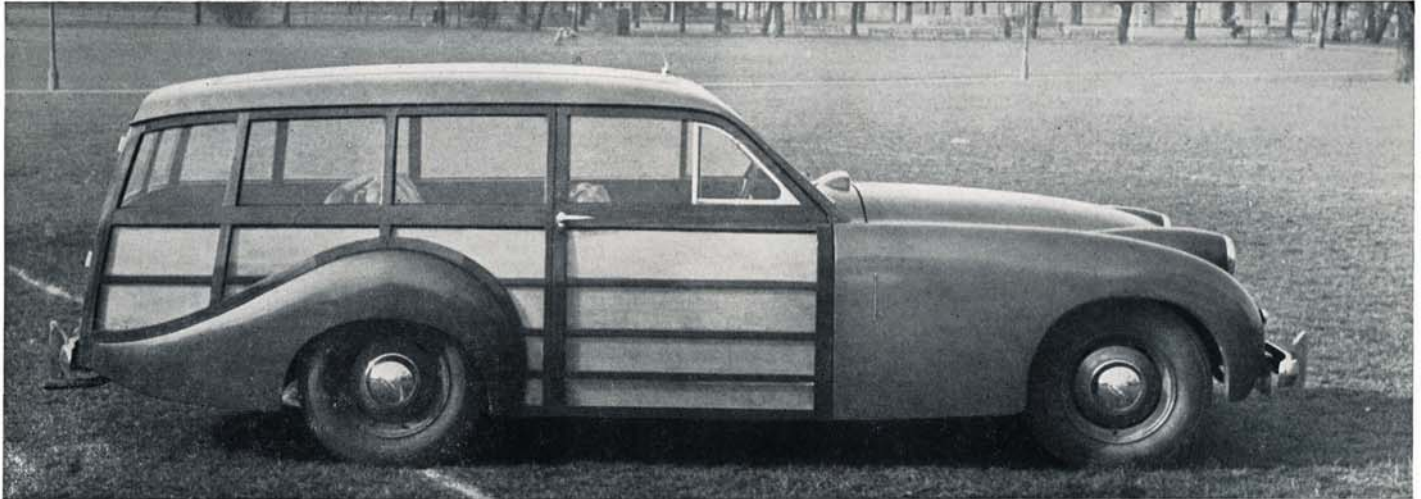
*Telegraphic Address :* Inland - Almotco, Clapcom, London  
Overseas - Almotco, London

*Telephone :* MACaulay 3201





## "SAFARI" ESTATE CAR



### SPECIFICATION — Monte Carlo Saloon and Safari Estate Car

**ENGINE** Rated at 30 h.p. 77.79 m.m. Bore by 95.25 m.m. Stroke. Capacity 3622 c.c. V.8 L head side valve, 85 B.H.P. at 3,200 R.P.M.

**TRANSMISSION** Single plate clutch, 3 speed gearbox, synchromesh 2nd and top — all gears helically cut. Side gear change. Overall ratios : Top 3.78, Second 6.7, First 11.8 and Reverse 15.1

**REAR AXLE** De Dion, with inboard brakes, robust spiral bevel crown and pinion carried on double bearings, with outrigger bearing supporting pinion. Ratio 3.78

**FRONT AXLE** Independently sprung - adjustable hub bearings - axle pivots and steering arm fitted with oil-less silentbloc bushes. Self-adjusting type steering knuckle joints.

**STEERING** Marles cam gear, high ratio, provided with full adjustment, spring-type telescopic steering wheel.

**DRIVE** Left or Right hand drive optional.

**BRAKES** Lockheed hydraulic 2 leading shoe on front wheels, 12 inch brake assemblies, with pistol grip handbrake operating on rear wheels.

**SUSPENSION** Coil springs front and rear. Armstrong telescopic shock absorbers all round.

**FRAME** Tubular, well braced with cross members.

**WHEELS** Bolt on steel disc. Tyres 6.25 x 16

**FUEL SYSTEM** Rear petrol tank incorporating an electrically operated reserve. 18 gallons capacity including the reserve of 2 gallons.

**LIGHTING** 12 volt, 60 amp hour, compensated voltage control.

**BODY** Aluminium and steel panels on Ash frame Natural wood framing on Safari.

**COLOUR & TRIMMING** To choice.

**DIMENSIONS** Overall length 16', Height 5', Width 5' 11", Wheelbase 9' 4", Track; Front 4' 8", Rear 4' 10". Turning circle 41' Weight; 29 cwts.

---

**PRICE Both Models : £1,375 plus P.T. £574 0s. 10d.**

---

#### TERMS OF BUSINESS

The Company reserves the right at any time to alter the specification, price and conditions of sale of all models. The price will be that ruling at the time of delivery. Every effort will be made to adhere to a promised date of delivery, but same cannot be guaranteed and no claim shall be made upon the Company in respect of any delay or for any loss or damage arising therefrom. The term Agent is used in a complimentary sense only, and our Agents are not authorised to incur any debts, or transact any business on the Company's behalf other than the sale of goods purchased from the Company: nor are they authorised to give any warranty or make any representation other than those contained in the guarantee, on the Company's behalf. Customer's cars are only driven by members of our Staff at Owners' risk.

