



*Why replace
if we can
Re-Ply?!?*

Restore your roof with an
ASTEC[®] Re-Ply[™] System
and get more roof for less money!



SAVES RUBBER, METAL, & ASPHALT ROOFS

Our roof will be better than the original!!



Add ASTEC Advantages to Your Roof

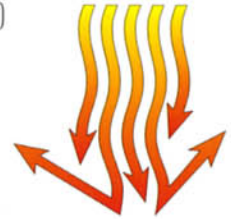
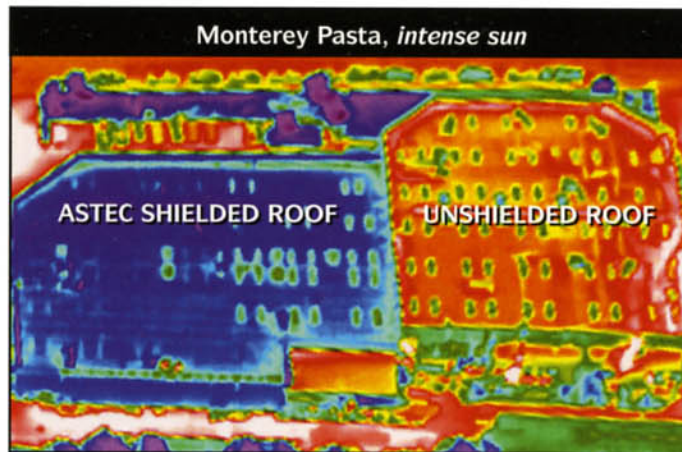
“El Nino produced some of the heaviest rains we’ve seen in this part of the country for many years. And no problems from the (ASTEC) roof...”

The **ASTEC Re-Ply System** is fluid-applied in multiple layers. The seamless, cured membrane outperforms ordinary roofing surfaces over a broad range of key test characteristics (see back cover.)



Add a Corrosion Barrier —

ASTEC Re-Ply roofing surfaces are virtually impervious to ocean salt spray, acid rain, and many other airborne corrosives and abrasives. It is formulated to withstand very hostile environments.



Add a Solar Shield —

Ceramic and titanium-based ASTEC Re-Ply roofing surfaces have very high reflectivity and heat dissipation — reducing heat and harmful U/V rays on your building.

← *This infrared aerial photograph indicates that the ASTEC Re-Ply shielded surface is 50°F cooler than the unshielded roof.*

Diablo nuclear power complex, Pacific coast



Digital Equipment Corporation, Arizona desert



Add a Renewable Warranty —

Every ASTEC Re-Ply System is Warranted for ten years after application. As the warranty period ends, you may choose to have your ASTEC Re-Ply surface inspected, cleaned, restored, and the warranty renewed for another ten years. (Check all the benefits on the *ASTEC Re-Ply 10-Year Renewable Warranty*.) With periodic ASTEC inspections and maintenance — *this could be the last roof you will ever need!*



Light manufacturing, New York State



Add a Wind Breaker —

An ASTEC Re-Ply surface seals all joints, laps, and fasteners under a monolithic seamless barrier that strong winds, and driving rain or hail, virtually cannot rattle, lift, or erode.

ASTEC[®] Re-Ply[™] System for Rubber & Asphalt Roofs

Improves Composite Roofs

- Creates a seamless, weathertight barrier.
- Stays pliable and weathertight in all climates.
- Withstands ponding water.
- Resists fungi and algae growth.
- Reflects away heat and harmful U/V radiation.
- Surpasses R19 heat gain testing.
- Saves big temperature control and cooling costs.
- Greatly reduces wind damage risk.
- Improves appearance.
- Eliminates roof replacement expenses.
- Provides a 10-Year Renewable Warranty.



1 Prepare Surface:

Pressure wash the old surface to eliminate loose material. Repair substrate, blisters, and cracks as needed.

2 Seal Seams:

Reinforce all roof, vent, duct, and flashing seams and laps with high tensile strength fabric. Saturate with the appropriate *ASTEC Base Sealer*.

3 Prime and Seal Surface:

Depending on the original composite surface, flow on one or two layers of either *ASTEC Base Sealer #8 for Rubber*, or *ASTEC Base Sealer #4 for Asphalt*. Both apply as fluids, filling all cracks, and curing as a seamless, pliable, membrane over the entire roof.

4 Apply Core Layer:

Flow on the first *ASTEC Re-Ply Finish* layer. It will bond with the *ASTEC Base Sealer* and provide a monolithic core base for the final surface.

5 Apply Surface Layer:

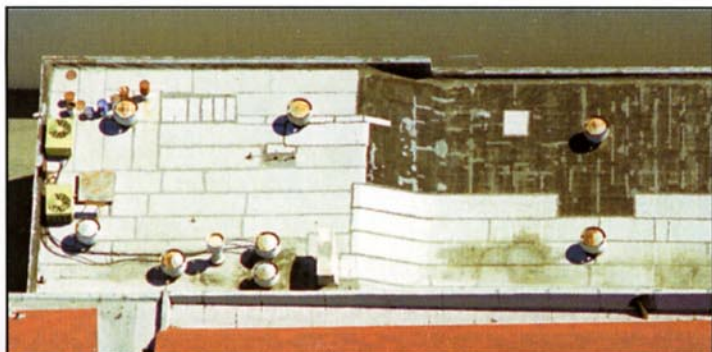
Flow on the final *ASTEC Re-Ply Finish* layer. The new surface will be a seamless, titanium-white ply of a highly-reflective roofing that is waterproof, pliable, and virtually impervious to airborne corrosives over years of hostile environmental conditions.

Procedures will vary by roof type and condition. Contact us, or visit www.icc-astec.com for details.

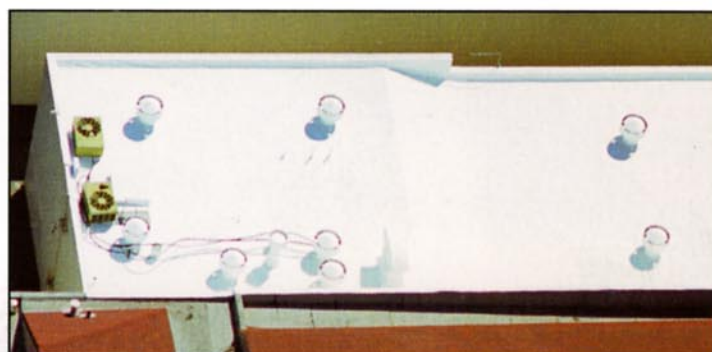


The asphalt roofing on this retail facility was restored to better-than-original condition by adding the advantages of the *ASTEC Re-Ply System*.

*The savings in cooling expenses alone will easily pay the cost of restoration over the life of the **ASTEC Renewable Warranty**.*



SPORTS SHACK (composite before Re-Ply)



SPORTS SHACK (after Re-Ply)

ASTECC[®] Re-Ply[™] System for Metal Roofs

Improves Metal Roofs

- Creates a seamless, weathertight barrier.
- Eliminates rust and corrosion.
- Reflects away heat and harmful U/V radiation.
- Surpasses R19 heat gain testing.
- Saves big temperature control and cooling costs.
- Greatly reduces thermal shock damage.
- Improves appearance.
- Eliminates roof replacement expenses.
- Provides a 10-Year Renewable Warranty.



4 Seal Roof:

Flow on *ASTECC WPM#9 Waterproof Sealer* over all areas of caulking, reinforcing fabric, and fasteners to create a watertight base for the final seamless layers.

5 Apply Core Layer:

Flow on the first layer of *ASTECC #900 Ceramic Finish for Metal*. It provides a tough, weathertight, monolithic core layer, bonded over every square inch of the roof surface.

6 Apply Final Layer:

Flow on a second layer of *ASTECC #900 Ceramic Finish for Metal*. This final application will create a seamless, titanium-white surface of highly-reflective, ceramic-embedded roofing that remains waterproof, pliable, and virtually impervious to airborne corrosives over years of hostile environmental conditions.

Procedures will vary by roof type and condition. Contact us, or visit www.icc-astec.com for details.

1 Prepare Surface:

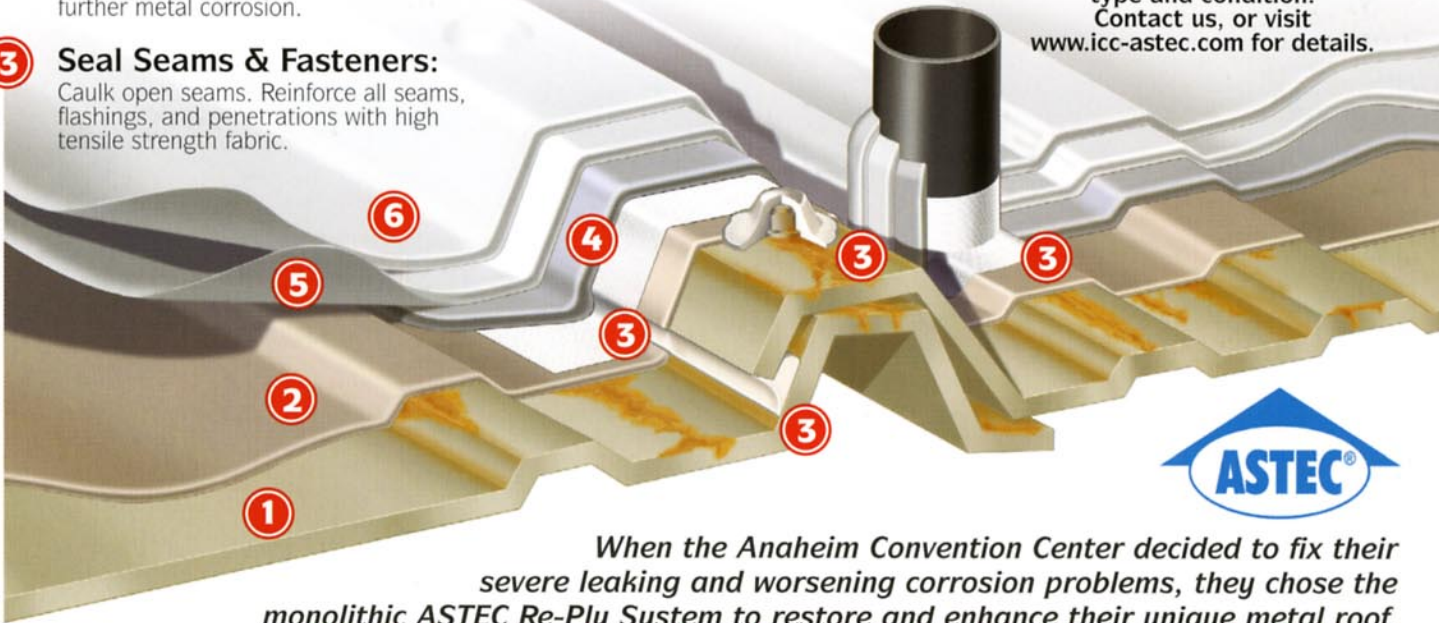
Remove scaling rust, and pressure wash to achieve a clean, sound surface. Tighten or replace loose fasteners.

2 Encapsulate Corrosion:

Apply *ASTECC B-16-71 Rust Control*, specially formulated to neutralize and halt further metal corrosion.

3 Seal Seams & Fasteners:

Caulk open seams. Reinforce all seams, flashings, and penetrations with high tensile strength fabric.



When the Anaheim Convention Center decided to fix their severe leaking and worsening corrosion problems, they chose the monolithic ASTECC Re-Ply System to restore and enhance their unique metal roof.
"We looked at a variety of products, but nobody had a system like ASTECC..."



CONVENTION CENTER (metal roof)



CONVENTION CENTER (after Re-Ply)



Save Installation Costs

"Using the ASTEC Re-Ply System, we were able to take advantage of the old metal roof structure for a third the cost of replacement."

The **ASTEC Re-Ply System** eliminates the cost of roof replacement. Add in facility downtime for reconstruction and you're talking real dollars. Restoring with ASTEC advantages can make your roof better than the original.



Save Maintenance Costs

"Our ten year warranty with ASTEC will soon be up for renewal and the roof is in great shape... no leaks, no rust, no separating!"

Our 10-Year Renewable Warranty is your satisfaction guarantee. And because it's renewable with inspection and maintenance, this could be your very last roof. ASTEC develops, tests, and controls the manufacturing of all our Re-Ply System materials. At the same time, we train every ASTEC Authorized Contractor from coast-to-coast. As a result, ASTEC Re-Ply roofing surfaces are not only waterproof and insulating, they are virtually impervious to the deleterious effects of wind, sun, salt spray, and corrosives in various climates.



Save Energy Costs

"We had higher average temperatures and still reduced our cooling costs thanks to our new (ASTEC reflective and insulating) roofing surfaces..."

The **ASTEC Re-Ply System** surpasses all criteria for the **Energy Star** label. The final layer of titanium and ceramic particles provides high reflectivity and heat dissipation – reducing roof surface temperatures by as much as 40%.



Save the Earth

"It's hard to believe that any roofing surface could stand up this long to our sun, heat, and ocean mist.... Thank you, ASTEC!"

The **ASTEC Re-Ply System** proves that environmentally-friendly technology can also be leading-edge technology while satisfying the requirements of roofing surfaces in extremes of environmental conditions.

Why replace it when you can RE-PLY™ it?



Covers as a fluid for seamless protection!!

Ceramic embedded ASTEC Re-Ply surface layers provide unbelievable thermal protection and durability.

ASTEC TEST, PROPERTIES, AND APPROVALS

Wind-driven Rain Resistance	No moisture penetration after 24 hours.	Federal Spec. TT-C-555-B
Chemical Resistance	24 hour exposure to 10 chemicals. Little to no effect.	ASTM-D-1308
Cold Checking	10 cold check cycles. No cracking or other deleterious effects.	ASTM-D-1211
Cold/Hot Cycling	10 cold/hot check cycles. No cracking or other deleterious effects. (+82 deg. C and -40 deg. C)	US TESTING LAB procedure
Abrasion Resistance	Withstood 450 liters of falling sand abrasion. No wear through.	ASTM-D-968
Adhesion	Tape cross-hatch method. 100% of coating remained in place.	ASTM-D-3359
Fire Resistance	Coating did not support combustion. Passed spread of flame Class A.	ASTM-E-108-90-UL/790
Impact Resistance	Withstood 160 inch pounds.	ASTM-D-2794
Ponding	After two weeks no water had penetrated the coating systems.	US TESTING LAB procedure
Moisture Vapor Permeability	Average moisture vapor transmission .08 without cracking.	ASTM-D-1653
Fungal Resistance	Coatings are resistant to fungal contamination. Rating of 10 on a scale of 0 to 10 (resistant).	ASTM-D-3273-73T
Flexibility	Passed the Conical Mandrel test.	ASTM-D-522
Tensile Strength after Weathering	75% retention of 50 hr. value for each temperature.	D-2370
Accelerated Weathering (2000 hours)	No deleterious effects.	G-26
Salt Spray (200 hr.)	No deleterious effect.	D-1654
Water Vapor Transmission	20 (inverted cup)	E-96
Fungicide	28 days scale 0 (No growth support)	D-3273/3274, G-21
Algicide	14 days scale 0 (No growth support)	G-29
Thermal Physical Properties	(0.95) emissivity and (0.87) reflectivity	Dry-Bulb Black Globe

Visit www.icc-astec.com for additional details

Near-by ASTEC Re-Ply Authorized Contractor:

ASTEC® Re-Ply™ Systems

are products of:

Insulating Coatings Corporation

103 Main Street
Binghamton, New York 13905

Telephone: 1-800-223-8494