

# *The Kennebec Land Trust* NEWS

Volume 31 No. 2/ Fall 2013

331 Main Street, Winthrop, Maine 04364    www.tkl.org    207-377-2848



## HAPPY ANNIVERSARY KLT!

*Theresa Kerchner, Executive Director*

### 25 YEARS FOR THE LAND

- November, 1988:** KLT incorporated
- 1989:** First KLT annual meeting, Jym St. Pierre, President
- 1990:** KLT organizes the Conference for Land & Trust; conservation easement donated - 152 acres at Vaughan Woods
- 1991:** 1,200 feet of shoreline protected on Echo Lake
- 1993:** \$42,000 raised by KLT Directors to conserve Sheep (Perry) Island, Cobbossee Lake
- 1994:** Stewardship Committee formed; Doug Scott hired as Membership Secretary
- 1995-1996:** "Mount Pisgah Breakfast Club" formed; Dexter Pond and Stream Mount Pisgah parcels, including an old growth stand, conserved
- 1997:** Islands of Hope Campaign, Norris Island purchased
- 1999:** Firsts: KLT website, field trips, Member of the Year award; Land Trust Alliance Rally
- 2000:** KLT joins Kennebec Highlands project; 360-acre historic family homestead donated by Governor Kenneth Curtis
- 2002:** First staff member, Theresa Kerchner, hired; office opened at 134 Main, 2B
- 2003:** First annual Lyceum and volunteer land stewards' meeting
- 2004:** Kennebec Landscapes Campaign raises \$500,000; Parker Pond Headland conserved: landowner, LMF, KLT, Parker Pond Association, donations
- 2005-2007:** KLT adds acreage to MDIFW Jamies Pond property; first KLT property map
- 2006:** Plein air painting: "Art and the Land" show, Slates Restaurant
- 2007:** Vassalboro Wildlife Habitat conserved east of the Kennebec River
- 2008:** KLT 20<sup>th</sup> Anniversary; Art Show, KLT Calendar, Abby Holman Agricultural Education School Programs
- 2009:** KLT and the Maine Forest Service form the Kennebec Woodland Partnership
- 2010:** *Between Person and Place* published
- 2011-2012:** A year of awards for Kennebec Land Trust directors, staff, and volunteers
- 2013:** First Children's Nature Camp taught by Gina Lamarche and Nicole Rhodes; small office with high visibility - 331 Main Street, Winthrop - purchased as KLT's headquarters
- 2014:** Ambitious 25<sup>th</sup> Anniversary Capital Campaign launched



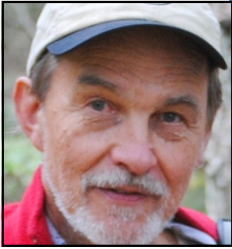
*Photograph: Norm Rodrigue*

Congratulations, KLT members! For twenty-five years we have championed land conservation and stewardship in central Maine. After a quarter century of steady, thoughtful work, KLT has 835 household members, a team of nineteen highly regarded Directors, an Advisory Board of community and regional leaders, an annual field trip and Lyceum series, important partnerships with other organizations and agencies, and three year-round staff. Having hosted eighteen interns from fifteen colleges and universities since 2005, we are helping to develop the next generation of conservation leadership. To date, with your support, KLT volunteers and staff have constructed over thirty-seven miles of trails on over 4,670 acres of permanently conserved land and protected fifteen miles of shoreline. We should all be proud of our collective success.

### **Mark your calendars for our 25<sup>th</sup> Anniversary Celebration: August, 24, 2014, Camp Winnebago, Echo Lake, Fayette.**

Our celebration will feature a triathlon, a blueberry pancake breakfast, a plein-air workshop; photography, forestry, and mushroom identification field trips; music by the Gawler Family, a local foods cookout, and a reunion with former KLT presidents, directors, members, and interns.

**Thanks to Andy Lilenthal and  
Camp Winnebago!**



Brian Kent

## PRESIDENT'S MESSAGE

Every two years a new president takes office at KLT. This year that responsibility falls on my shoulders, and I find myself looking back at our accomplishments and forward to the years ahead.

The Land Trust's successes can be summed up in acres conserved (4,679), trails built (37 miles), and shoreline protected (15 miles). Yet none of this could have been achieved without you, our members, and without our staff and Board putting in countless hours to make KLT run smoothly and efficiently.

Looking ahead, there is much to celebrate. Next year, our 25<sup>th</sup> anniversary year, will bring many special events, lectures, and hikes, culminating in an August 24, 2014, celebration at Camp Winnebago on Echo Lake.

We also expect some major land acquisitions. Stay tuned!

On November 20, 2013, we purchased our own office (see page 5). We've outgrown our present rental space and found an affordable small Cape on Main Street in Winthrop. It has great visibility (it is just west of the Hannaford shopping center, in the village) and will double our floor space. We'll have space for parking, room for meetings, and a small resource library; a garage will serve our need to store tools and stewardship supplies. Please stop by!

Board changes include the unexpected and sad passing of Harry Dwyer (see page 8). His ebullient presence will be missed.

We thank Glenn Hodgkins and Clyde Walton, who have stepped down after serving on the Board for many years, and welcome new Board members Joe Stevenson and Sue Bell. Joe, a forester by profession, lives with his family in Fayette. Sue is an Augusta resident who has held senior positions in state government, is a trained biologist, and has expertise in forestry issues and environmental policy.

Finally, thanks to Stan Eller, outgoing president. Stan accomplished so much, quietly and effectively.

To all our members, thank you for your support. We hope you will continue to be inspired by nature and remain committed to conserving land in Kennebec County, in perpetuity, for generations to come.

*Brian Kent*

### KLT BOARD OF DIRECTORS

**Brian Kent,**  
President, Litchfield

**Beth Nagusky,**  
Vice-President, Litchfield

**Amy Trunnell,**  
Treasurer, Readfield

**Mary Denison,**  
Secretary, Kents Hill  
Tom Bartol, Manchester

Sue Bell, Augusta  
Stan Eller, Manchester  
Cheryl Harrington, Winthrop

Lisa Kane, South China  
Howard Lake, Readfield  
Scott Longfellow, Manchester

Bob Marvinney, Readfield  
Bob Mohlar, Readfield

Patrice Putman, Winthrop  
Norm Rodrigue, Manchester

Mike Seitzinger, Augusta  
Deb Sewall, Hallowell  
Joseph Stevenson, Fayette

#### KLT STAFF

Theresa Kerchner  
*Executive Director*

Gina Lamarche  
*Program Director*

Nicole Rhodes  
*Stewardship Director*

Matt Silverman  
*Conservation Assistant*

#### KLT NEWS DESIGN

Gina Lamarche

#### KLT NEWS EDITORS

Theresa Kerchner

Janie Matrisciano

Deb Sewall

### KLT ADVISORY BOARD

Jerry Bley  
Harold Burnett  
Jim Connors  
Hon. Kenneth Curtis  
Elizabeth Davidson  
Caroline Farr  
Peter Geiger  
David Gibson  
Lloyd Irland  
Charlie Jacobs  
Mark Johnston  
Ron Joseph  
Kevin Kane  
Martha Kent  
Robert Kimber

Gloria & Lincoln Ladd  
Robert Ladd  
Barbara & Mort Libby  
Jon Lund  
Jessie & Douglas Macdonald  
Kevin Mattson  
Patricia Mooney, Ph.D.  
Jeff Pidot  
Dianne E. Ryan  
Jean Scudder  
Rebecca Stanley  
Jym St. Pierre  
Robert Weston

## KLT INTERNS: FUTURE LEADERS

*Theresa Kerchner, Executive Director; Gina Lamarche, Program Director; Nicole Rhodes, Stewardship Director*

*In August, after a summer of field and office work, Lauren Dryburgh, Hannah Caswell, and Rich Nagle completed volunteer internships with KLT. Many of you met our 2013 interns on the trail or in the office and noted their talents and hard work for KLT. Thank you to Lauren, Hannah, and Rich for your good work for KLT! We miss you and wish you the best as you pursue your future academic and career paths. (For more information about KLT's Ronald Joseph internship program: [www.tklt.org](http://www.tklt.org).) To all former KLT Interns - mark your calendars: **Our 25<sup>th</sup> Anniversary celebration includes a reunion for all former interns with a Wilderness First Aid class, Aug. 22-23, 2014.***

### Lauren Dryburgh, American University

My summer spent as an intern with KLT was a wonderful experience. I had the opportunity to learn from and work with a group of knowledgeable, talented, and passionate staff, stewards, and Board members. In addition, I learned new skills like trail maintenance and grant writing, and I have extremely fond memories of blueberry picking at the Davidson Preserve and swimming at Hodgdon Island on Cobbossee Lake. Still, as I reflect on my experience, what has really stuck with me is the deep understanding I gained of the changing field of conservation and the land use challenges that we continue to face in Maine and worldwide. My research project on Maine's local food movement gave me some insight into the unique cultural and historical factors that keep Maine beautiful and its local markets successful, and made me appreciate the finiteness of the land that we all must share. Everyone at KLT taught me what it takes to share this land.

### Hannah Caswell, Villanova University

My summer with KLT was an amazing learning experience. I gained both professional skills and a greater understanding of the nonprofit world. The internship taught me things that I am sure will be beneficial in any future career, such as grant and publication writing, communication skills, and an insight into the importance of partnerships and networking. But the best part of the internship was exploring the beautiful land that's been preserved in my own backyard, and seeing the work that people are doing to make sure that central Maine retains its character. It was great to work for such a progressive organization with an extremely passionate and knowledgeable membership base. To everyone I worked with, thank you for playing an integral role in my internship. It was a pleasure to work with you.

### Rich Nagle, Antioch University, New England

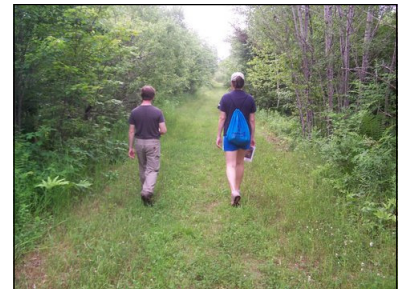
My time with KLT was a great experience. It was a summer filled with trail maintenance, public relations, a bit of office work, and most importantly, learning about KLT's properties. The folks at KLT went out of their way to communicate their philosophy of conservation and to introduce us to some wonderful natural areas. After all, the more we knew about the properties, the better we could talk to the public about them. This experience changed the way I think about land conservation.



*Busy at work in the office.*



*Cobbossee Lake - from left: Lauren, Jon Lund, Hannah, Rich.*



*KLT Holman Conservation Area, Litchfield.*



## WELCOME TO OUR NEW MEMBERS

David & Lisa Ault	Eileen Coyne	Alan Patterson	Michael Shawkey
Nancy Birkhimer	Don DeMatteis	Harold & Annie Potts	Joseph & Alanna Stevenson
David Blocher	Kelly Frost	Susan Redmond	Suki & Bob Thompson
Beth Borgerhoff-Pomerleau	Denise Giguere	Thomas Reeves	Lowell & Joan Toenniessen
Sue Bell	Rayna & Philip Leibowitz	Nicole Rhodes	Marshall Wright & Karen Webster
Diane Clay			

## NOTES FROM THE STEWARDSHIP DESK

*Nicole Rhodes, Stewardship Director*

As winter is upon us, I am approaching my one year mark with KLT. What a fantastic year it has been, thanks to the dedicated members, volunteers, and staff in this organization! I am happy to report that we accomplished a great deal over the summer and maintained a steady clip into the fall.



Several people spent many hours on our newest property, the Peter Miller Woodland. Summer interns Hannah Caswell and Lauren Dryburgh began marking the property boundaries, while volunteer steward Andy Walsh, with assistance from Marc Loiselle, blazed a new trail through the woodland's forests, swamps, and ponds. Looking forward to future forestry programs, we prepared the cabin site to host educational events. Steve McLaughlin, John Archard, and Dwain Young installed a new privy, while Conservation Assistant Matt Silverman built steps leading to the cabin porch. Matt, Richard Stake, and Hannah Glover helped clean up the property. We are honored to have the Miller family entrust KLT with perpetual stewardship of this magnificent landscape.

On Mount Pisgah, Kents Hill School students joined volunteer steward Jim Connors, and Ken Spalding, Denny Harnish, and Bob Sands, to install bridges, lay stone, and clear the new Blueberry Trail. Howard Lake and Bob Mulliken also worked on the trail and in the parking lot area. Our summer intern Rich Nagle created trail maps and installed them along the Blueberry Trail. Rich made similar signs for the Holman Conservation Area highlighting many interesting natural features along the trails. As the days become shorter, please remember to bring a flashlight on your evening hikes, and don't forget to wear blaze orange during hunting season.



*Canoe rack construction at KLT's Hutchinson Pond Conservation Area using lumber milled from trees harvested at KLT's Curtis Homestead. Stay tuned for space rental options! Photograph: Norm Rodrigue*



*Cobbossee Island volunteers Jon Lund, Theresa Davulis, and Joan Sturmthal monitor KLT's Hodgdon Island Preserve. Photograph: Kevin Kane*

### PLEASE PATRONIZE OUR BUSINESS



### PARTNERS IN CONSERVATION

#### CONSERVATORS

Cribstone Capital Management,  
a Private Wealth Advisory Practice  
of Ameriprise Financial Services, Inc.  
Kennebec Savings Bank  
Longfellow's Greenhouses

#### SPONSORS

Apple Valley Books  
Augusta Fuel Company  
Becky's Second Time Around  
Camp Androscoggin  
Camp Bearnstow  
Camp Laurel  
Camp Tekakwitha  
Camp Vega  
Camp Winnebago

Central Maine Technology  
Frost Advancement Advisors  
Gardiner Family Chiropractic PC  
J.S. McCarthy Printers  
Kennebec Valley Chamber of Commerce  
Knowlton Hewins Roberts Funeral Homes  
Rotary Garage  
Saunders Manufacturing  
The Liberal Cup  
The Write Approach, Jean Grigsby Consulting  
The VIA Agency  
Thomas Agency Insurance  
Two Loons Farm and Conservative Builders  
Two Trees Forestry  
Winthrop Veterinary Hospital  
Winthrop Area Chamber of Commerce

*The Business Partners in Conservation program recognizes business leaders and companies in our community who have made significant contributions of cash, goods, and services to support the regional conservation efforts of the Kennebec Land Trust.*

*To learn more about this program, please contact KLT Board member Scott Longfellow at 207-622-6204.*

## ECOLOGY OF NATIVE AND NON-NATIVE BITTERSWEET

Nicole Rhodes, Stewardship Director



What's as slender as a string but capable of downing a mature white pine? If you're familiar with invasive bittersweet (*Celastrus orbiculatus*), then you probably guessed right. Invasive bittersweet can grow as a trailing shrub or vine and is well established in the Northeast, Kennebec County included. The plant was originally introduced from East Asia in the 1960s as an ornamental<sup>1</sup>, and it has also been used in decorative wreaths (Mainers know that balsam wreaths are much better!). It can tolerate both sun and shady environments, and its red berries are a tasty snack for birds, allowing what started as an ornamental garden plant to travel into the deepest woods of Maine. Invasive bittersweet's ability to climb rapidly and girdle trees is bad news for our forests.

Native bittersweet (*Celastrus scandens*) was once well documented throughout Maine, but it is now quite rare, growing in only one known location in Kennebec County.<sup>2</sup> It is important to distinguish between invasive and native varieties before deciding to remove the plant. **The easiest way to tell the difference is by locating its flowers (in spring and early summer) or berries (in fall or winter).** The invasive bittersweet will have flowers and fruits in the joints (axils) of the leaves and branches, while the native bittersweet fruits and flowers only at the ends of the branches. Both bittersweets have simple leaves, woody twining stems, small green flowers, and orange fruit that splits open to reveal scarlet seeds<sup>3</sup>. This fall, look for the alluring orange-to-red berries on both the native and invasive species. Then take a closer to see if it is *C. scandens* or *C. orbiculatus*. Happy botanizing!

<sup>1</sup> New England Wildflower Society (<https://gobotany.newenglandwild.org>).

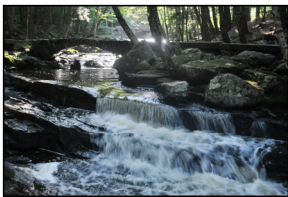
<sup>2</sup> Arthur Haines, personal communication.

<sup>3</sup> Lawrence Newcomb, *Newcomb's Wildflower Guide* (1977).



KLT Newsletter Sponsor

### THANK YOU FOR YOUR ASSISTANCE WITH OUR OUTREACH, EDUCATION, LANDS, LYCEUM, AND STEWARDSHIP PROGRAMS



SPRING 2013 ~ FALL 2013

#### MANY THANKS TO THESE FOUNDATIONS FOR THEIR SUPPORT:

Elmina B. Sewall Foundation

Norcross Wildlife Foundation

Helen and George Ladd Charitable Corporation

High Valley Fund of the Maine Community  
Foundation

Maine Community Foundation

**Androscoggin Yacht Club**, John Archard, **Ballard Meats**, Bill Bayreuther, Bruce Bell, Nat Bell, Jerry Bley, Mark Brown, Ken Canfield and Shane Duigan, **Maine Forest Service**; Ginny Coady, Ellerbe Cole, Jim Connors, Cheri Cooledge, Elizabeth Davidson, Joel Davis, Stan and Jane Davis, Theresa Davulis, Mary Denison, Kathy Despres, **Friends of the Cobbossee Watershed**, Stan Eller, Dave Ellis, Sarah Fuller, Hannah Glover, Denny Harnish, Cheryl Harrington, Bea Horne, Helen Holman, Lloyd Irland, Jill Ippoliti, Charlie Jacobs, David Kahl, Kevin Kane, Lisa Kane, **ME Department of Inland Fisheries and Wildlife**; Brian Kent, Ann Judd and Ron Giard, **Kents Hill School**; Robert Kimber, Lincoln and Gloria Ladd, Brenda Lake, Ed Lake, Howard Lake, Barbara and Mort Libby, Peter Lammert, **KLT Land Donors, Stewards, Office and Field Volunteers, Directors and Advisors**, Mark Loiselle, Erik Lund, Jon Lund, Janie Matrisciano, **Manchester Conservation Commission and Trail Volunteers**, Steve McLaughlin, Ian MacKinnon, John and Molly Melrose, Linda McKee, Tom and Donna Mickewich, Robin, Holly, and Lynette Miller, Bob Mohlar, Teague Morris, Robert Mulliken, Beth Nagusky, Daniel Perkins, Emily Perkins, Jim Perkins, Trevor Peterson, Betsy and Nathan Poulin, **Readfield Conservation Commission**, Joyce Rivers, Norm Rodrigue, Nancy Sage, Bob Sands, Justin Schlawin, Jean Scudder, Dusty Small, Ina Small, Andy Smith, Toby Smith, Ken and Sue Spalding, Rebecca Stanley, Richard Stake, David Stevenson, Zach Stewart, **Central Maine Technology**; Aaron Svedlow, Joan Sturmthal, Dodi Thompson, **Town of Vienna**; Kate Tremblay, **Vaughan Homestead Foundation**; Andy and Sheree Wess, **Lakeside Motel**, Manon Whittlesey, Veronique Vendette, Andy Walsh, Clyde Walton, **Winthrop Conservation Commission**, Alan Weaver, Cam Weaver, Dwain Young

Photograph: Brian Kent

## IN MEMORY OF HARRY DWYER

*Robert Kimber, KLT Advisory Board*

In May of this year when Harry died, much too young at the age of fifty-five, the forestry profession in Maine lost one of its most articulate and principled spokesmen. A longtime KLT member, Harry served on the stewardship committee, was always available to consult on forestry matters, and joined the Board in 2011.

In the wider public arena, he served on the Maine Council on Sustainable Forest Management in the 1990s, on Governor Baldacci's Liquidation Harvesting Task Force in 2001, and as KLT's representative to the Kennebec Woodland Partnership. Whatever the forum, Harry advocated tirelessly for forestry practices that are ecologically, economically, and socially sustainable and respectful of all the forest's values: its wildlife, its soils, its waterways, its beauty.

As a consulting forester throughout central Maine, Harry put his principles into practice, guided always by what he held to be the forester's primary obligation: to nurture the forest and maintain its long-term health. For many of his clients, he was not only a valued adviser but also a cherished friend.

But no summary of Harry's gifts and accomplishments can adequately capture the man: his exuberance, his big welcoming heart, and his delight in kitchen-table conversation, which might begin with forestry, lead into politics, bounce off sideways into baseball, make a detour into the history of World War II, and circle around to a recipe for pancakes.

What a great joy it was to know Harry; what a great sadness to have lost him.

*KLT has created an award in Harry's name that will recognize his love for Maine's forests and his commitment to their conservation and stewardship. The first KLT Harry Dwyer forest stewardship award will be presented on August 24, 2014, during our 25<sup>th</sup> Anniversary meeting.*



*Photograph: Nathalie Woolworth; July 2011*

## KLT STAFF AND BOARD NEWS ~ TRANSITIONS

### THANK YOU GLENN HODGKINS, HALLOWELL, BOARD MEMBER

*Stan Eller, Immediate Past President*

Glenn joined the Kennebec Land Trust Board of Directors in 1996 and provided sixteen years of exceptional leadership and service. He was recognized for his outstanding leadership and his contributions to KLT during our August 2013 Annual Meeting.

Glenn represented the highest ideals of a KLT Board member. He was elected president in 2003 during a time of great transition and growth. KLT had recently hired its first employee - our current Executive Director, Theresa Kerchner - and the year before had opened our first office. Glenn oversaw the extremely successful Kennebec Landscapes Capital Campaign, which acquired many valuable KLT properties. He is also a KLT land donor; his family added to the Parker Pond Headlands parcel, one of KLT's most beautiful properties. Most recently he served as chair of the Strategic Conservation Planning Committee, helping to develop the tools we need to guide future land acquisition decisions.

Glenn's interest in conservation comes from both a scientific understanding of ecology and a deep enjoyment of and respect for the natural world. The Trust has been fortunate to have Glenn as a leader. He will be missed in this capacity, but he has promised to continue as an active member of KLT.



*2013 KLT Annual Meeting, Androscoggin Yacht Club. President Stan Eller and Glenn Hodgkins.*

*Photograph: Norm Rodrigue*

*More on next page...*

**THANK YOU - CLYDE WALTON, FAYETTE, BOARD MEMBER***Cheryl Harrington, KLT Director*

You have never really seen a piece of land until you've walked it with Clyde Walton. He looks with the eyes of a landscape architect, a surveyor, a town planner, a conservationist, a lover of the natural world, and a very wise public servant. He is also generous in sharing what he sees, and over the years has taught many of the rest of us how to look at land. The KLT Board of Directors has been blessed with Clyde's presence for many years, and we're going to miss his participation in Board activities. But we have to admit that even Clyde deserves to slow down a bit, though it isn't easy to associate him with those two words. He has served as the Volunteer Steward of KLT's Bearnstow Camp Property, as a very active participant in KLT Lands Committee work, as a strong supporter of the KLT Lyceum Programs and all things educational, and as a wise counselor to our many deliberations. Clyde has made public service to his town, his state, KLT, Thirty-Mile River, and many other organizations his life's work. He is a Mainer in the best tradition of giving to his communities. Clyde's active participation on the KLT Board of Directors will be missed by all of us. We wish him well and look forward to seeing him at future KLT events.



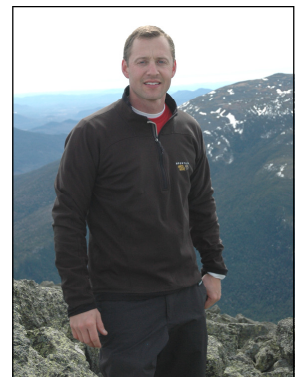
*Clyde Walton and Bob Moblar, Lands Committee members, 2007. Photograph: Theresa Kerchner*

**WELCOME - SUE BELL, AUGUSTA, BOARD MEMBER**

As a lifelong Mainer from Aroostook County, I have had the privilege of growing up and living in natural resource-rich environments in various regions of our state. Fishing, hiking, birding, and skiing in northern, western, and central Maine are my outdoor recreation passions. I started my career as a high school biology teacher and evolved to leadership roles at the Department of Conservation, the Maine Forest Service, and the Baxter State Park Authority. Working as a Senior Policy Advisor to Governor Angus S. King, Jr., I was fortunate to be involved in some of the land conservation initiatives - including the Land for Maine's Future program - that were undertaken during his term, and that protected 1.6 million acres from development and ensured public access for generations to come. I am looking forward to working with the talented staff and members of the Board in advancing the critical mission of KLT.

**WELCOME - JOE STEVENSON, FAYETTE, BOARD MEMBER**

Being raised on a commercial strawberry farm in Wayne directly impacted my outlook on life in the outdoors. I studied forestry at the University of Maine, fought wildfires on a Hotshot crew out west, and returned to Maine to work as a Ranger with the Maine Forest Service. Five years ago I accepted a licensed forester position with SAPPI, primarily working with small, private landowners. I live in Fayette with my wife Alanna and our three little girls, Evelyn (5), Lydia (3½), and Olena (9 months). I'm very fortunate to spend each day outdoors, and our family benefits directly from Maine's working forests. I'm enthusiastic about the opportunity to serve on the KLT Board.

**WELCOME - MATT SILVERMAN, CONSERVATION ASSISTANT**

I am excited to continue my work as a Conservation Assistant with the Kennebec Land Trust, work that began in August of 2013. I graduated from Colby College in the spring of 2012 with a double major in Biology and Environmental Science. While I was in school, I felt extremely fortunate to benefit from Maine's natural resources for both recreation and education. I was an avid member of and leader in the Colby Outing Club and had plenty of time to hike, explore, and sugar in the late winter. I also learned from many biology and ecology labs in the marshlands, forests, and lakes of central Maine! Prior to joining KLT, I worked for many summers as a woodworking instructor at Camp Sangamon, near Rutland, Vermont. Between my love of woodworking and my deep appreciation for Maine's outdoors, I am thrilled to be working on KLT's Local Wood and Conservation Initiative, and I look forward to meeting KLT members at an upcoming event!





## Kennebec Land Trust

*Conservation Across Generations*

P.O. Box 261  
331 Main Street  
Winthrop, ME 04364

Phone: 207-377-2848

[www.tklt.org](http://www.tklt.org)

Office Hours:

Tues. Wed, & Thurs. 10:00 a.m. - 4:00 p.m.



Printed on post-consumer recycled fibres.

### WE'VE MOVED!

331 Main Street, Winthrop.

Please stop and visit!



**THANK YOU** for your 2014 KLT membership donation - please share your newsletter with a friend, family member, or local business; we have included a new member envelope.

### 2014 KLT Lyceum

**Birds, Fish, and Butterflies:  
The Breeding and Foraging  
Habitats of Some Maine  
Migrants**

Supported by

Gloria, Lincoln, & Robert Ladd



*Yellow-Rumped Warbler. Photograph: Rebecca Holberton*

**March 20 - Herb Wilson, Professor of Biology, Colby College**

**March 27 - John Lichter, Professor of Biology, Bowdoin College**

**April 3 - Rebecca Holberton, Professor of Biology, University of Maine**

**Snow Date: April 10**

**Ladd Recreation Center, Wayne**