

The Kennebec Land Trust NEWS

Volume 29 No. 1/ Spring 2012

134 Main St. #2B, Winthrop, Maine 04364 www.tkltr.org 207-377-2848



MEADOW BROOK FARM CONSERVED 256 ACRES, FAYETTE

**KENNEBEC LAND TRUST, ELAINE AND BERNDT GRAF, LAND FOR MAINE'S FUTURE
PROGRAM, & MAINE DEPARTMENT OF AGRICULTURE, FOOD & RURAL RESOURCES**

Theresa Kerchner, Executive Director

We wanted our land to stay a farm and to be affordable for the next generation of farmers.

Berndt and Elaine Graf, Farmers



Berndt and Elaine Graf, Meadowbrook Farm, Fayette

Photograph: Jane Davis

**Please join us for a Farm Celebration and
Strawberry Festival with the Grafts and
the Sturtevant Family!**

**STRAWBERRIES, BISCUITS, FARM VISITS, HIKES*
AND THE ROGERS BROTHERS FIDDLE-CELLO DUO**

Saturday, July 7 9:00 - 11:00 a.m.

Fayette Baptist Church

* Optional Meadow Brook Farm visit to see the
animals, hike, and walk to the Sturtevant scenic lookout
from 10 - 11 a.m.

Berndt and Elaine Graf have lived in Fayette since 1983. With 30 milking Jerseys, a fiber business with Romney/Finn sheep and angora goats, and a riding stable, they know the value of undeveloped land.

They both grew up in the outdoors, roaming woods, fields, and streams on foot and on horseback. Today, the rural areas of their childhoods are house lots and stores.

In 2009, when we interviewed Berndt and Elaine for *Between Person and Place* (see pp. 44-45), the Grafts knew they wanted a very different outcome for Meadow Brook Farm. That December they invited KLT Lands Committee members and Stephanie Gilbert of the Maine Department of Agriculture, Food and Rural Resources to their 1800s farmhouse. We gathered around a long wooden table, listened to their story, and, inspired by their vision, committed our collective resources to a conservation partnership.

Two and a half years and many meetings later, Meadow Brook Farm is now permanently conserved by an agricultural easement held by KLT and the Maine Department of Agriculture, Food and Rural Resources. The Grafts' easement protects the only working dairy farm in Fayette and valuable wetlands and wildlife habitat along Meadow Brook. In addition, it provides for public access and hiking trails. KLT's Lands Committee Chair Bob Mohlar noted the Graf's vision:

KLT and the people of Fayette and surrounding area are grateful to have neighbors like the Grafts who have worked patiently and graciously with us to conserve this remarkable area as working farmland and forest for current and future generations.

Continued on page 9...

PRESIDENT'S MESSAGE



Stan Eller

Greetings KLT Members and Friends!

Winter and spring have come and gone, so we can now savor the beautiful days of summer. I hope you were able to enjoy one of our popular Lyceum events in March; a winter hike at Jamies Pond, Perkins Woods, or the Curtis Homestead; our Earth Day event at Meadow Brook Farm and Sturtevant Scenic Area; or the May bird walk at the Holman Conservation Area.

KLT hikes, paddles, and events for all ages, including the Outing Club, are posted on our website (www.tkltr.org), and don't forget the annual meeting and cookout on August 19! We will be adding new summer and fall outings to Little Cobbossee and Mount Pisgah. Please stop by the office if you need a copy of **KLT's 2012 Trail Map**.

Our most recent conservation success is the 256-acre Meadow Brook Farm conservation easement in Fayette. Working with dairy farmers Berndt and Elaine Graf, KLT has permanently conserved a farm that defines Fayette's rural character. Thanks to our generous land donors, 767 members, and conservation partners, KLT has now conserved over 4,240 acres of valuable shoreland, forest, wildlife habitat, and farmland in Kennebec County.

This summer we will be fundraising to purchase two Winthrop properties: **sixty acres on Mt. Pisgah** and **ninety acres on Little Cobbossee**. We will also be acquiring two additional donated conservation easements in Fayette, one on **David Pond** and additional acres next to **KLT's Sturtevant Farm Scenic Area**.

KLT membership donations fund our core land conservation and stewardship programs and our members are a voice for conservation in our communities. With funds received from a recent gift, we were able to include a copy of our beautiful book, *Between Person and Place* in this mailing. If you have already purchased a copy, please share this one with a friend or relative and encourage them to join KLT and support land conservation.

Looking ahead, we are planning an exciting year for KLT's 25th anniversary in 2013-2014. We will be publishing a new guide to KLT properties and offering special hikes, art events, and community programs. We are aiming for over **1000** members by 2014, and we need your help to meet this goal!

KLT is recognized as a dynamic, forwarding-looking land trust. Our Directors and programs were recognized this year with awards from Colby College, the Bank of Maine, the Maine Environmental Education Association, and Hannaford Brothers. We are ready to write the next chapter in our land conservation success story.

Thank you for your support.

Stan Eller

KLT BOARD OF DIRECTORS

Stan Eller,
President, Manchester

John Melrose,
Vice-President, Vassalboro

Robert Mohlar,
Vice-President, Readfield

Amy Trunnell
Treasurer, Readfield

Mary Denison
Secretary, Kents Hill

Tom Bartol, Manchester
Harry Dwyer, Fayette
Cheryl Harrington, Winthrop
Glenn Hodgkins, Hallowell
Lisa Kane, South China

Brian Kent, Litchfield
Howard Lake, Readfield
Susan Liebling, Mt. Vernon
Bob Marvinney, Readfield

Beth Nagusky, Litchfield
Patrice Putman, Winthrop
Norm Rodrigue, Manchester
Deb Sewall, Hallowell
Clyde Walton, Fayette

KLT STAFF

Theresa Kerchner
Executive Director

Justin Schlawn
Conservation Assistant
Gina Lamarche
Program Director

KLT NEWS DESIGN

Gina Lamarche

KLT NEWS EDITORS

Theresa Kerchner
Janie Matrisciano
Deb Sewall

KLT ADVISORY BOARD

Jerry Bley
Harold Burnett

Jim Connors
Scott Cowger
Hon. Kenneth Curtis
Elizabeth Davidson

Caroline Farr
Peter Geiger
David Gibson
Lloyd Irland
Mark Johnston
Ron Joseph
Richard Judd, Ph.D.
Judy Kane
Martha Kent

Gloria & Lincoln Ladd
Robert Ladd

Barbara & Mort Libby
Jon Lund

Jessie & Douglas Macdonald
Kevin Mattson

Patricia Mooney, Ph.D.
Rupert Neily

Jeff Pidot
Dianne E. Ryan

Jean Scudder
Jane Smith

Jym St. Pierre
Benjamin Townsend, Esq.
Robert Weston



KLT OUTING CLUB 2012 SCHEDULE

HIKE • PADDLE • EXPLORE

The Kennebec Land Trust Outing Club (**KLTOC**) is an activity-oriented club offering a wide variety of outdoor events to young, active adults 21 years of age and older. KLTOC brings together those who share a love of nature and outdoor activity. Whether you are new to the Kennebec Land Trust or are already a member, the KLTOC is a great way to explore the outdoors, get to know Kennebec Land Trust properties, and socialize with a fun, friendly, and active group.

During the summer we offer a monthly outdoor activity such as hiking, kayaking, or canoeing, as well as educational opportunities and social events. If you're interested in learning more, please visit our website at www.tkltr.org/KLTOC.htm! KLTOC is a FREE club.



Photograph: Brian Kent



Photograph: ?



Photograph: Brian Kent



KLTOC 2012 Schedule:

Paddle, Picnic, and Swim at Gott Pasture on Wilson Pond, Wayne Saturday, June 2, 10:30 a.m.

Join the KLT Outing Club and KLT interns for a paddle, hike, and picnic! We will meet at the Wilson/Dexter Pond causeway on the Mount Pisgah Road and paddle to Gott Pasture in Wayne for a picnic, hike, and swim. Pack a bag lunch, bring a swimsuit. Bring your own kayak/canoe. If you don't have a boat and would still like to come, please call the KLT office at **(207) 377-2848**.

Parker Pond Headlands Hike and Swim, Fayette Saturday, July 7, 11:00 a.m.

Join the KLT Outing Club for a hike, climb to the ledges, and swim at Parker Pond Headlands in Mount Vernon. Meet at the Parker Pond trailhead. Pack a bag lunch, bring a swimsuit.

Loon Paddle to Sunset Beach on Hodgdon Island, Lake Cobbossee Saturday, August 4, 10:00 a.m.

Join *Lisa Kane*, Natural Science Educator, MDIFW, and the KLT Outing Club for a paddle to Sunset Beach on Hodgdon Island, where we will picnic and swim. Lisa will begin with a short educational program about loons, then the group will canoe or kayak on Cobbossee Lake to Sunset Beach. Meet at the outlet dam on Cobbossee Stream; park along Collins Road. Please pack a picnic lunch. Bring your own kayak/canoe.

PREREGISTER and directions: (207) 377-2848

Hike, Soup, and Strings: Music Jam Sunday, November 4

3:00 Torsey Pond Nature Preserve Hike

5:00 - 7:30 Evening of music and dinner at the Olde Post Office Café

Join us for an afternoon hike at Torsey Pond in Readfield, followed by a light dinner and a live music jam at the Olde Post Office Café, Mount Vernon. \$12 per adult, \$6 for kids (includes soup, salad, bread, and pastry). Complimentary peanut butter and jelly sandwiches also provided by KLT for children 12 and under.

**PLEASE PRE-REGISTER for this event by
Friday, October 26: (207) 377-2848.**

KLTOC is Sponsored by:

**Kennebec
Savings Bank**
your community bank since 1870



KLT WELCOMES SUMMER INTERNS AND FELLOWS



Teresa Withee, Bowdoin College Berkley-Tyre Environmental Fellow

My name is Teresa Withee and I am a rising sophomore at Bowdoin College. I am pursuing an Environmental Studies and Economics coordinate major, with the possibility of a minor in Mathematics. I have lived in Maine my entire life and spent most of my time outdoors, so the protectiveness that I feel towards nature is a natural byproduct of my upbringing. I am beyond excited that I will be spending my summer working at KLT and am incredibly thankful to have the opportunity to put my passion for the environment to good use. I hope to gain a better knowledge of how nonprofit organizations function and to become comfortable with GIS and with conducting my own research. I will also be an avid member of the KLT Outing Club!



Véronique Vendette

Originally from Montréal, Québec, this past November I moved, with my husband and soon to be first child, to Gardiner, where we will be working on our lifelong project: creating a sustainable homestead. As a Biology and Environmental Impact Assessment graduate from Concordia University in Montréal, I have always been very passionate about sustainability and environmental protection. Previously involved in the creation of two environmental non-profits in Québec, and having done work in field biology and environmental education, I am very excited to be part of KLT's internship program this year. I can't wait to work outdoors, gain more knowledge about the beautiful Maine ecology, and take part in its conservation. During my internship at KLT I will also be working on a special sustainability program for our business partners. I look forward to seeing you all on the trails!

KENNEBEC LAND TRUST AWARDS

Deb Sewall, KLT Board Member and Theresa Kerchner, KLT Executive Director

Maine Environmental Education Association Award

KLT is the MEAA's 2012 Excellence in Environmental Education Program award winner! Olivia Griset, Chair of the MEEA Nomination Committee noted, "The pool for



Courtesy of the Lincoln County News

this award was very, very competitive and KLT should be very proud to be the winner. Congratulations to the KLT for their commitment and dedication to sustainability and environmental education. Your work stands as a role model for other Land Trusts and environmental education programs in Maine." The MEEA Board of Directors recognized that KLT reaches many students, adults, and community members with programs on conservation, nature, and sustainability, and that KLT's programs demonstrate years of work and commitment to environmental education.

Norm Rodrigue Receives Outstanding Leadership Award

On December 1, KLT directors, advisors, supporters, and staff attended the Bank of Maine's Focus on Philanthropy event with 300 members of Maine's nonprofits. KLT received the highest award, \$10,000, in honor of Norm Rodrigue for his outstanding leadership over many years. What a day for land conservation! Congratulations and thank you, Norm!

KLT will use this gift to purchase tools, equipment, and supplies, and to finance bog bridging, trail development, and other property improvements as part of our stewardship program.



Photographs: © Marty Thornton

**The Kennebec Land Trust is sponsoring
Old Hallowell Day's 5K Road Race on
Saturday, July 16, 2012.**

**Come enjoy central Maine's historic riverside city.
Participate in the road race, watch the parade,
enjoy the music, and much more.**

Visit www.tkl.org and click on programs to register!

ON THE LAND

Justin Schlawin, KLT Conservation Assistant

With the changing climate, winter seems shorter and more erratic each year. However, we at the Kennebec Land Trust always seem to make the best of it—finding ways to enjoy the outdoors despite the lack of snow.

Per tradition, the **Annual Stewardship Workshop** for KLT's land stewards was held on one of the coldest days of the year. On January 14, over forty of our committed volunteer stewards met at the Helen and George Ladd Home to discuss upcoming work on the lands they manage. **Charlie Todd**, Wildlife Biologist with the Maine Department of Inland Fisheries and Wildlife, presented an excellent program about Maine's raptors and the importance of land conservation.

KLT Newsletter Sponsor



The annual Curtis Homestead Family Fun day was held on Saturday, January 28 in Leeds. Despite the previous week's rain, warm and sunny weather brought out over fifty adults and children to hike, snowshoe, roast marshmallows, throw snowballs, and drink hot chocolate. **Nat and Tracy Bell** helped prepare the fire pit, along with stewards **Tom and Donna Mickewich**.

The Kennebec Land Trust celebrated the Great Maine Outdoor Weekend on March 4 with a snowshoe at Jamies Pond Wildlife Management Area, led by **Tom Bartol** and five-year-old **Silas Bartol**. Mother Nature had cooperated with over a foot of fresh snow on the first of March, and despite the rain that fell the day before the snowshoe, conditions were excellent. Participants witnessed a freak of nature: as the hikers passed through the forest, they heard the loud crack of a tree falling. Just fifteen feet away from the group, a ten-inch hemlock fell...fortunately parallel to the trail and not harming anyone.

On April 28, **Josh Brown** led thirty hikers at the newly protected Meadowbrook and Sturtevant Farms, two new conservation easements totaling 240 acres. Josh helped the group classify wetland communities and identify wetland plants.



Manon Whittlesey



Andrews Tolman



Norm Rodrigue

PLEASE PATRONIZE OUR BUSINESS



PARTNERS IN CONSERVATION

Conservators

Hannaford
Joel D. Davis and Associates, a Private
Wealth Advisory Practice of
Ameriprise Financial Services, Inc.
Kennebec Savings Bank
Longfellow's Greenhouses

Protector

JS McCarthy

Sponsors

Apple Valley Books
Augusta Fuel Company
Camp Androscoggin
Camp Bearnstow
Camp Laurel
Camp Winnebago

Camp Vega
Julian's Wayne General Store
Kennebec Valley Chamber of Commerce
Knowlton Hewins Roberts Funeral Homes
Metso/FABCO
Rotary Garage
Saunders Manufacturing
The Liberal Cup
The Write Approach,
Jean Grigsby Consulting
Thomas Agency Insurance
Two Trees Forestry
Wayne Village Pottery
Winthrop Area Chamber of Commerce

The Business Partners in Conservation program recognizes business leaders and companies in our community who have made significant contributions of cash, goods, and services to support the regional conservation efforts of the Kennebec Land Trust.



KENNEBEC LAND TRUST AND KENNEBEC WOODLAND PARTNERSHIP CONSERVING FORESTLAND

Theresa Kerchner, KLT Executive Director

The Kennebec Woodland Partnership (KWP), a forestland conservation initiative founded by the Kennebec Land Trust and the Maine Forest Service in 2009, now includes twelve partners! The Partnership was formed after KLT's 2009 March Lyceum, *Forest Stewardship in Maine, New England, and the World*, sponsored by the Maine Forest Service.

Kennebec Woodland Partners, June, 2012:

Kennebec Land Trust

Maine CDC Drinking Water Program,

Maine Forest Service

Sebasticook Regional Land Trust

Kennebec County Soil and Water Conservation District

Maine Department of Agriculture, Food, and Rural Resources

Trust to Conserve Northern Forestlands

Maine Forest Products Council

Forest Society of Maine

Center for Research on Sustainable Forests, University of Maine

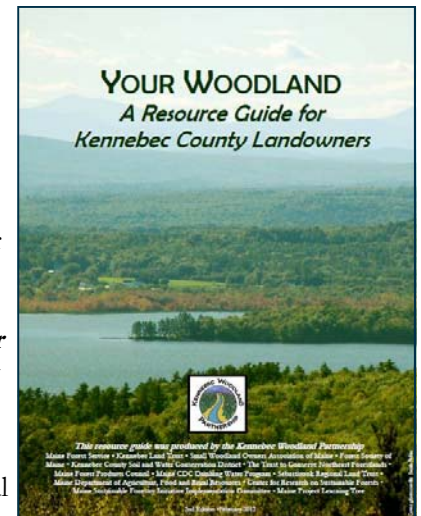
Small Woodland Owners Association of Maine

Maine Project Learning Tree

KWP partners share a common concern for the future of Kennebec County's forests. With diverse interests but common conservation goals, we collaborate on projects that support Kennebec County's woods products, tourism, and recreational economies and protect water quality, wildlife habitat and scenic resources.

KWP projects and staff have been supported by funds from the Maine Outdoor Heritage Fund, the U.S. Forest Service, and the Maine Community Foundation. KWP part-time consultant Amanda Mahaffey coordinates events and quarterly Partnership meetings. Our programs to date are: introductory woodland owner workshops; a conference focused on the economic and ecological value of Kennebec forests; development of a "Stewardship Storyline", publication of the enclosed booklet, ***Your Woodland: A Resource Guide for Kennebec County Landowners***; collaboration with the University of Maine on a survey of Kennebec County woodland owners; and a KLT/MFS research paper focused on a local woods economy and ecological reserve lands.

Please share this booklet with friends and neighbors and call the KLT office for additional copies, or with questions about your woodlands. For more information:



www.tkl.org/KennebecWoodlandPartnership.htm or www.maineforestservice.gov/kennebecwoodlands.

WELCOME TO OUR NEW MEMBERS

Stefani Berkey and Daniel Tandy

David and Martha Ellis

Sarah Fagg and Tom Renckens

Stephen Gaal

Chuck and Ginger Hillier

David Howes

David Jacques

Diane Jerome

Jeanne Kannegieser

Metso Fabrics

Dana Michaud

Renee Pierce

Rose Ann Rodrigue

Melissa Romac

Doug Scott

Bob Stephenson

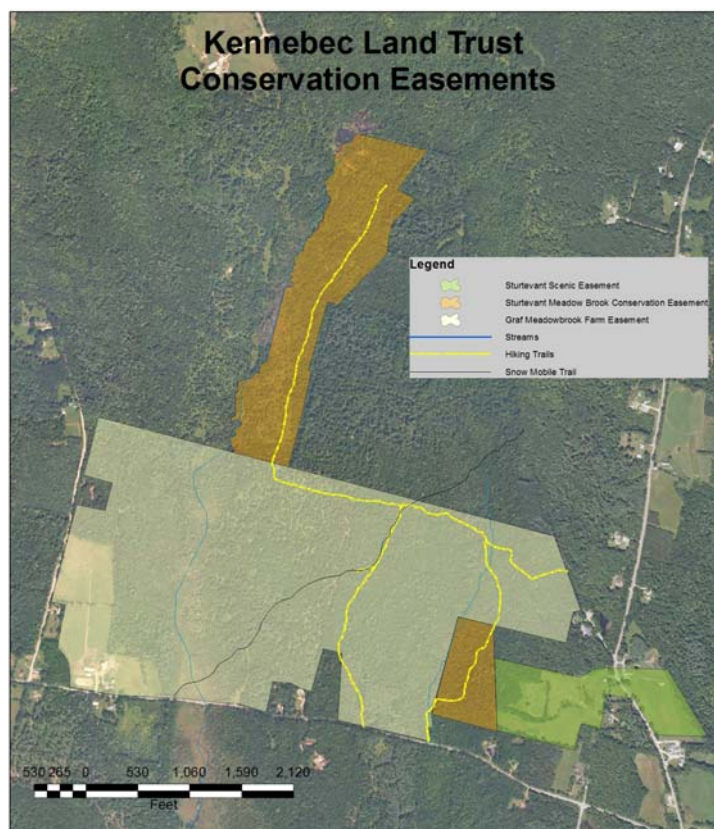
Zach and Sarah Stewart

Nina Tilander

Barbara Vickery

Andrew Walsh

Bob and Cathy Whittemore



Graf Meadowbrook Farm -
Sturtevant Meadowbrook Conservation Easement
and Sturtevant Scenic Easement



...Continued from cover.

Just over the ridge from the Grafs' land is Home Nest Farm, owned by the Sturtevant family for eight generations. In 2002 the Sturtevants gave KLT a 22.5-acre conservation easement on the Sturtevant Farm Scenic Area, which includes fields and a scenic view of Maine's western mountains (*Between Person and Place*, pp. 34-35). In 2012, the Sturtevants will donate a second, 60-acre conservation easement to KLT that will include working forestland, and wetlands connected to Meadow Brook Farm. In addition, the new easement will provide for a non-motorized trail network linking the two conservation properties.

The Sturtevant and Graf easements will have public access points on the Bamford Hill and Asa Hutchinson Roads. A trail is already in progress, with initial work completed by Kents Hill students and KLT Conservation Assistant Justin Schlawin.

Please call the KLT office for additional information, and join us for strawberries and a celebration on July 7!

Thank you - Berndt and Elaine Graf; the Sturtevant Family; the Land for Maine's Future Program; the Maine Department of Agriculture, Food and Rural Resources; the Fields Pond and Cricket Foundations; and many others who assisted with this project, especially Project Manager Jerry Bley of Creative Conservation LLC; KLT Lands Committee

Members with Bob Mohlar as Chair; Cheryl Harrington, KLT President 2009-2011; Howard Lake of Lake and Denison; Jonathan Milne; Morten Moesswilde, Maine Forest Service District Forester; and Mark Robinson, Fayette Town Manager.

**THANK YOU FOR YOUR ASSISTANCE WITH
OUR OUTREACH, EDUCATION, LANDS,
LYCEUM, AND STEWARDSHIP PROGRAMS**



FALL 2011 ~ SPRING 2012

Thank you for your Foundation support:

**Bank of Maine
Cricket Foundation
Helen and George Ladd Charitable
Corporation
Maine Community Foundation**

Jane Andrews, Tom Bartol, Bill Bayreuther, Nat, Tracy, Eli & Nathan Bell, Jerry Bley, Josh Brown, Harold Burnett, **Two Trees Forestry**, Ginny Coady, Jim Connors, Dave Courtemanch, **Maine Department of Environmental Protection**; Jane & Stan Davis, Mary Denison, Rebecca Dorr, Eric Doucette, Pat Ellis, Sarah Fuller, Merry Gallagher, **Maine Department of Inland Fisheries and Wildlife**, Stephanie Gilbert, **Maine Department of Agriculture, Food and Rural Resources**; Ann Goseline, Berndt and Elaine Graf, Ruth Grauert, Jody Harris, Collin Therrian, Hope Hilton, and the **Land for Maine's Future Board and Staff**; Ginger Hillier, Helen Holman, Bea Horne, Ron Joseph, **Julian's Wayne General Store**, Brian Kent, **Kents Hill School**, Robert Kimber, Howard Lake, Gloria and Lincoln Ladd, Robert Ladd, **Ladd Recreation Center**, Erin Lloyd, Jon Lund, Maranacook Middle School, **Marie's Whole Foods**, Janie Matriciano, Tom & Donna Mickewich, Jonathan Milne, Morten Moesswilde, **Maine Forest Service**; Barbara Moss, Tait Norden, **Olde Post Office Café**, Patrice Putman, Dave Rocque, **Maine Department of Agriculture, Food and Rural Resources**; Norm Rodrigue, Andy Smith, Rebecca Stanley, Arn & Leda Sturtevant, Mary Sturtevant, Brian Sylvester, Nat Sylvester, **Flaky Tart**, Amy Trunnell, Veronique Vendette, Clyde Walton, **Winthrop High School**.



KENNEBEC LAND TRUST

PO Box 261
134 2B Main St.
Winthrop, ME 04364
Phone: 207-377-2848

info@tklt.org

Office Hours:
Tues., Wed., & Thurs.
10:00 a.m. - 4:00 p.m.



QUESTIONS?

CHECK US OUT ON THE WEB AT
WWW.TKLT.ORG



Join Us for Our Annual Meeting and Field Trips!
Sunday, August 19, 2012, Androscoggin Yacht Club Family Potluck and Cookout
KLT's Annual Meeting is Sponsored by Joel Davis and Associates

KLT Perkins Woods, Androscoggin Lake, Wayne ~ Photograph: Brian Kent