

Scissor Lift

Snorkel

www.snorkel.com.au



S3246

- 9.75m maximum working height
- Pothole protection system
- Fork lift loadable from 3 sides
- Swing-out trays
- 318kg platform capacity
- Fold down handrails
- Non-marking tyres
- Driveable at full height
- Joystick control on removeable console
- Centre pivot-type steering
- Dual wheel drive system
- These compact battery operated machines feature a standard roll-out platform, non-marking tires, center pivot steering for tight maneuvering, plus integral pothole protection.

Other Snorkel Work Platforms

Snorkel also manufactures a range of other work platforms including both small & large scissor lifts, trailer boom units, truck mounted boom units, and large telescoping boom machines. Many of these units are available with alternative power sources including 24V DC options.

Truck Mounted Boom



Trailer Mounted Boom



Rough Terrain Scissor Lift



Self Propelled Boom



Snorkel

Your Snorkel Sales Representative
Clint Norgrove

Mobile: 021 774 722

Email: clint@snorkel.co.nz

Manufacturing Plant: 36 Bruce Road, Levin, New Zealand
Telephone: (06) 368-9168
Facsimile: (06) 368-9164

S3246 Scissor Lift

TECHNICAL DATA

PLATFORM

Height.....	32' (9.75 m)
Size	45" x 94" (114.3 cm x 238.7 cm)
Rollout Extension	36" (91.4 cm)
Platform Length – extended.....	130" (330.2 cm)
Capacity	700 lbs. (318 kg)
Capacity on Rollout Extension	250 lbs. (113.3 kg)

MACHINE DIMENSIONS

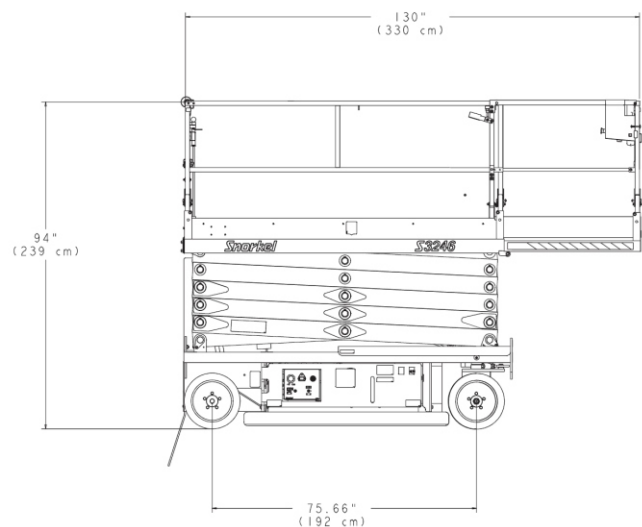
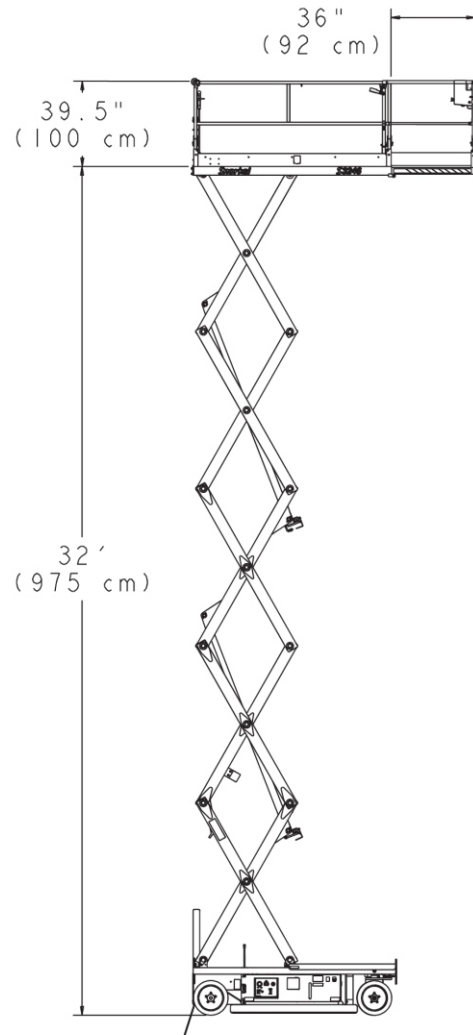
Overall Stowed Height (to Guardrails).....	94" (239 cm)
Overall Stowed Height (Guardrails folded).....	67" (1.7 m)
Overall Length.....	96" (2.4 m)
Weight.....	6,620 lbs. (3,003 kg)
Ground clearance	
At machine center	4" (10.1 cm)
Pothole protection deployed	1" (2.5 cm)

PERFORMANCE

Tire size (Solid Rubber)	16" x 5" (40.6 cm x 12.7 cm)
Gradeability	25%
Drive speed – Stowed.....	2 mph (3.2 km/h)
Drive speed – Raised.....	0.5 mph (0.8 km/h)
Electrical system	24 volts
Batteries	240 amp-hr
Charger	19 amp
Maximum drive height.....	32' (9.75 m)
Turning radius outside	101" (2.5 m)
Turning radius inside.....	10" (25.4 cm)

OPTIONS

- Horn
- Flashing Light
- Battery Condition Indicator
- Lanyard Anchors
- Key Switch
- Swing Gate
- Maintenance free batteries



Danger: Standard models described in this brochure are NON-INSULATED and do not provide electrocution protection from contact with or close proximity to energised conductors which is pointed out on the decals and placards attached to the machine.

Products in this brochure comply with relevant ANSI and Australian Standards. This literature is for illustrative purposes only. Consult Operating/Maintenance and Parts Manuals for proper procedures. Specifications may vary and are subject to change without notice.

Snorkel

www.snorkel.com.au