

Stained Glass Windows



The stained glass window at the south end of the nave was installed when the main church building was constructed in 1960.

Nave Windows

The stained glass window installation in St. Mark's nave was part of the 1992-1993 Renovation program. These beautiful and inspiring windows are described and viewed on the pages that follow.

The artist, Mary Ann Downs-Behle of New York City, NY, designed and created the windows.

Notice the nave windows are a "continuous narration," a convention used by Italian renaissance painters in murals, where a single protagonist can appear several times, or several episodes can appear in a single space.

The west wall windows depict the Messianic promise and fulfillment: the Lord who "was rich"; the Lord who is coming.

The East Wall windows are New Testament stories.

Overview of West Wall Windows in the Nave

The four windows on the west wall together depict these verses from Mark 13:24-28:

"...but in those days, after the suffering, the sun will be darkened, and the moon will not give its light, and the stars will be falling from Heaven, and the powers in the Heavens will be shaken. Then, they will see 'the Son of Man coming in the clouds' with great power and glory. Then, they will send out the angels, and gather His elect from the four winds, from the ends of the earth to the ends of Heaven."

As the figure of the Lord approaches in the clouds, lines sweep out from Him to the four corners of the window openings to indicate the four winds, the ends of the earth and the ends of Heaven. The figures of the angels lead the eye to the power and dominance of Jesus' presence, as well as gathering the elect to the Kingdom of God.

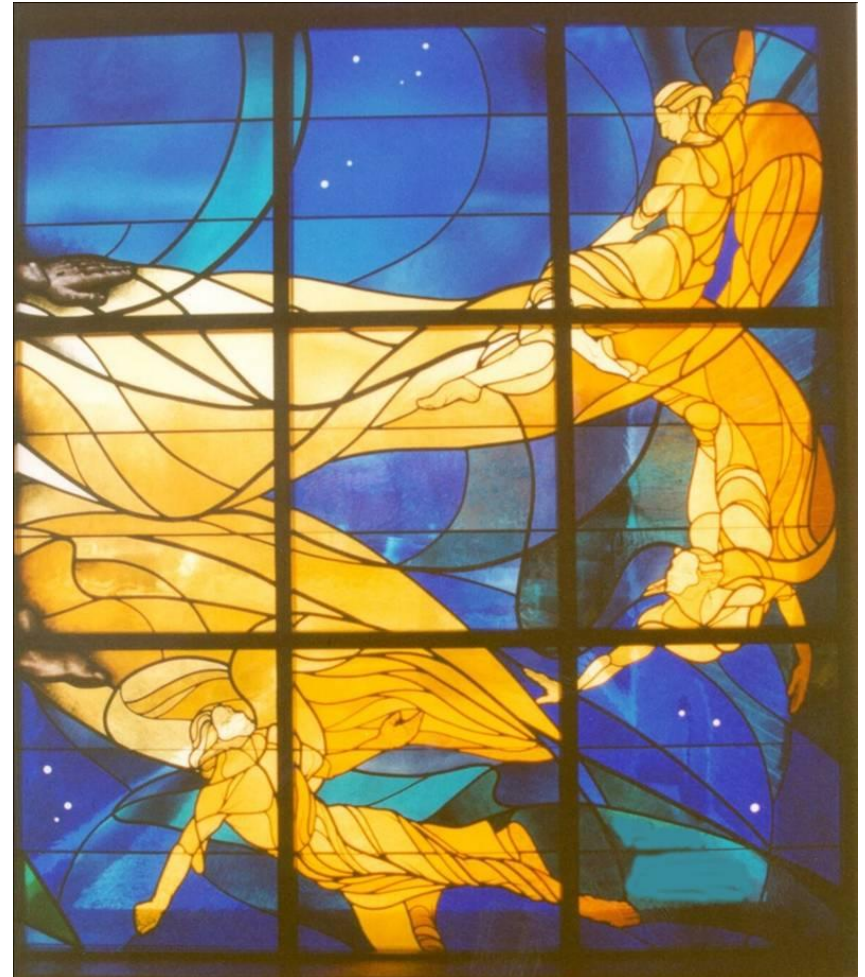
The circular motifs are multi-purpose; they suggest the darkening sun and moon on either side of Jesus; the earth below; the falling stars. The circled is the symbol of eternity, completeness.

The following verse of Daniel indicated most powerfully the vision of the Kingdom of God, Christ's kingship and the inclusion of all people that the artist hoped to capture visually:

"...and to Him was given dominion and glory and kingship, that all peoples, nations, and languages should serve Him. His dominion is an everlasting dominion that shall not pass away, and His kingship is one that shall never be destroyed."

Individual Windows

1. Send out the Angels



2. Jesus and the Lion

The lion and the figure of Jesus, as the focal points of the window, symbolize the Promise and the Fulfillment; the Old Testament prophecy of Jesus as “the lion of the tribe of Judah,” and this reference in Genesis 49:10... “the scepter shall not pass from Judah, nor the ruler’s staff from beneath his feet...”

The lion is also symbolic of the royal dignity of Jesus, as well as the symbol for St. Mark, himself.

The lion relates directly to the picturing of the Peaceable Kingdom, as part of the vision of the Kingdom of God. The wolf and the lamb lie together, the calf with the lion, and the child shall lead them. (Isaiah) The tree of Jesse whose crown is Jesus, or the “Root of David” (Jesus) is pictured with



four streams, symbolic of the four rivers of paradise and also the four gospels. The partial indication of the earth’s curve, the streams, animals, tree and child could also serve as a reminder of our stewardship of the earth.

3. Ends of the Earth



4. Gathering the Elect

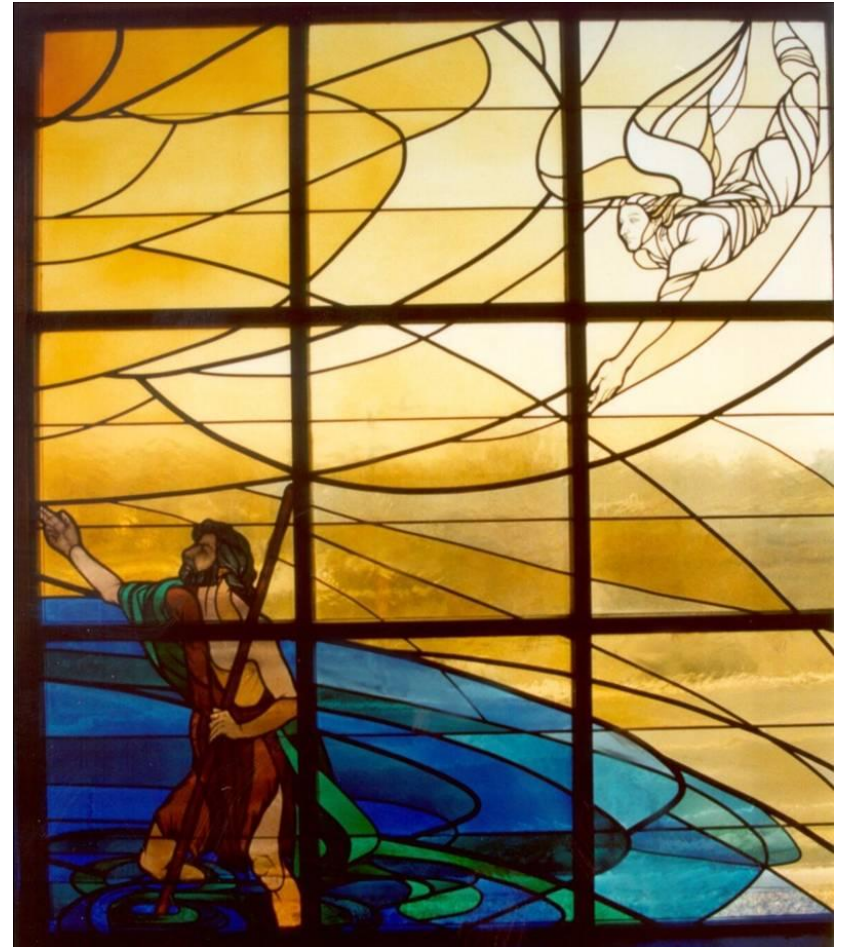


Overview of East Wall Windows in the Nave

Notice again the windows are a “continuous narration.”
”The Lord who “became poor,” the Lord who is exalted.

Many of the parables are depicted in some of these windows, showing Jesus teaching and healing—showing the Kingdom of God on earth.

5. John the Baptist



...John the Baptist appears first, as in the gospel of St. Mark, having just baptized Jesus.

6. Calling of the Disciples



...Jesus rising from the water; "...and just as He was coming up out of the water, He saw the Heavens torn apart and the spirit descending like a dove on Him..."

...Jesus calling disciples: Simon and Andrew casting their nets, James and John in their boat at sea.

7. Jesus Teaching



... the sower; the rocky soil with the birds eating the seed; the ripe wheat; the disciples in the wheat, plucking grains on the Sabbath; the mustard bush sheltering birds.

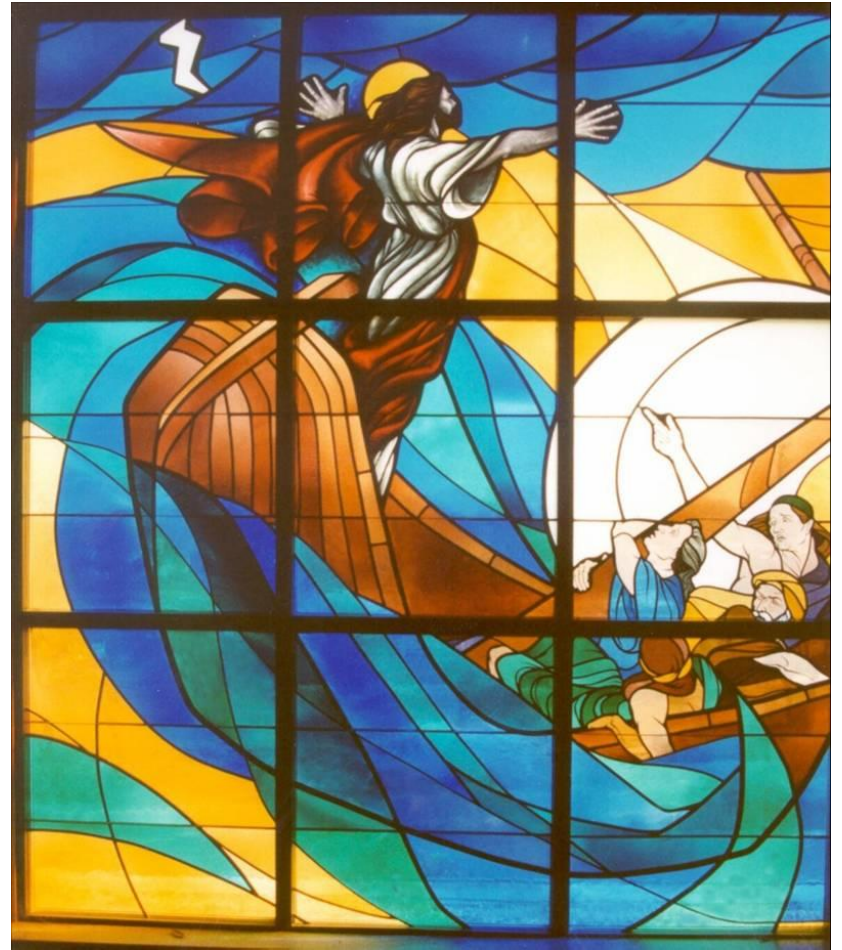
... the figures symbolizing the "new wineskin"; "...suffer the little children to come unto me"; the woman bending for a basket of fish' and the woman holding basket of bread.

8. Jesus Casting out a Demon



... the skeptical Pharisees; the repentant sinner; the woman reaching to touch Jesus' cloak; Jesus casting out the demon from the man with the broken fetters; and the blind and the sick gathering to be healed.

9. Jesus Calms the Storm



... Jesus commanding the storm to subside and the disciples in fear, confusion, and despair.

10. The Passion



... Jesus alone and suffering in the Garden and in death.

11. Jesus Exalted in Heaven



...Jesus is exalted in Heaven; "...was taken into Heaven and sat down at the right hand of God..." Mark 16:19

...the angels bearing the symbols of kingship—the crown and scepter.

Background of the Sanctuary Renovation

St. Mark's sanctuary's Stained Glass window installation was part of the 1992-1993 Renovation program.

The artist, Mary Ann Downs-Behle of New York City, designed and created the windows. Ms. Downs-Behle stayed with June Ball while she was in our area, working on the windows and overseeing their installation.

To get the right perspective for the windows, Ms. Downs-Behle worked in a barn large enough to hold all the drawings and to mount them on the outside walls of the structure to visually inspect her work in the proper scale as it progressed.

Ms. Downs-Behle had the building committee review her final sketches before creating the windows. The picture below shows her at left, laying out the life-sized sketches on the floor of the fellowship hall for viewing and final comments.



A closer look at the sketches shows how finely detailed they were to render the story she tells in the windows. The partial sketch in the following picture is of the second window in the west wall.



Additional photos (shown on the next pages) taken during the renovation show the interim north wall behind the altar. The three crosses were moved to the courtyard and in their place was a meaningful transition rendering on the theme:

"Through the Holy Spirit, God himself is present with us as, one in Christ, we are called to lift our hands in service."

Dr. Ron Zirkle created the artwork; at the time, Dr. Zirkle was by a math teacher at Irving Intermediate School and a member of St. Mark's, but he also had artistic talent, as depicted in his rendering.

Note the signatures surrounding the artwork; the congregation was invited to come and sign their names to the wall, where they would be sealed behind the new marble façade to be installed. Pastor and Alice Carlson are shown in the foreground, ready to sign.



The green marble wall is going up...



... while the rest of the sanctuary is empty, ready to receive its new windows and the rest of the renovation.

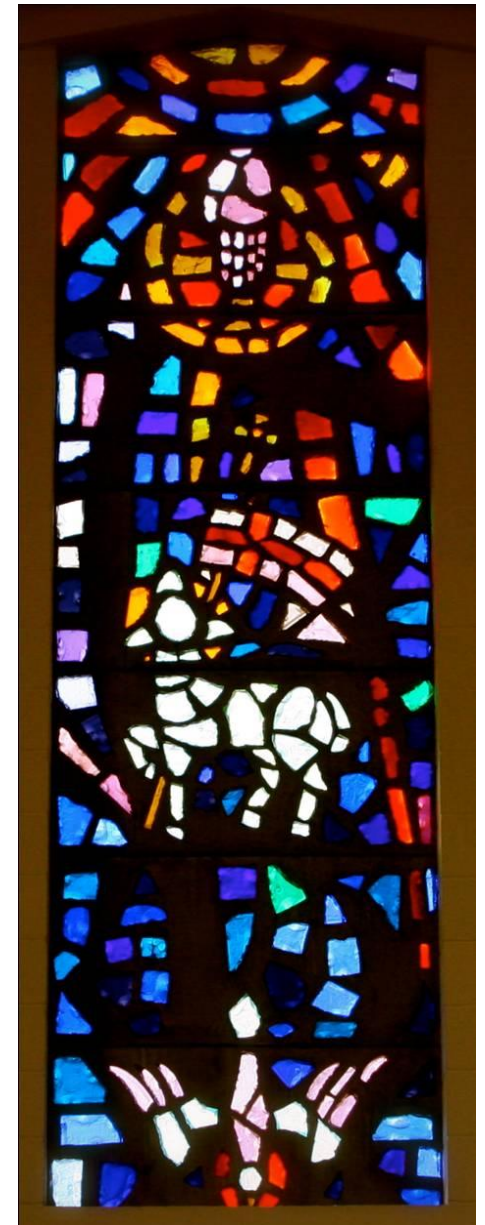


The South Window of the Nave

The stained glass window at the south end of the nave was installed when the main church building was constructed in 1960. It is made of faceted pieces of colored glass set in a mastic and frame of concrete, a mosaic that has brilliance. It has a thickness that is unlike leaded stained glass, which is common in church construction.



The center panel is of the Trinity. At the top, the hand of God, the Creator, in the center, the Lamb of God, the Redeemer, and the bottom, the dove of the Holy Spirit, God, with us. That is the proclamation of St. Mark's Lutheran Church. God is Trinity, Father, Son, and Holy Spirit. God is to be known through preaching of His Word and the Sacraments of Baptism and the Lord's Supper.



One can see the symbol for the Lord's Supper in the upper left-hand corner, the chalice, representing one of the sacraments. The open Bible in the middle of the left-hand panel symbolizes the Word preached. When people trust the revelation and grace of God, they are brought together in a community of faith, the church, symbolized by the sheaf of wheat in the lower left-hand corner. The sheaf is bound in red, a sign that there is a cost to be a follower of Jesus Christ. This community of believers has the name, St. Mark.



The Sacrament of Baptism is represented by the font. The baptismal font is depicted in the middle of the right-hand panel. The symbol of St. Mark, a winged lion, is in the upper right-hand panel. It is also true, that this congregation is a Lutheran Church and the symbol in the lower right-hand panel, Luther's Seal, a dark cross on a red heart on a white rose with a gold border on a blue field.



The Narthex mosaic stained glass windows were designed by Willet Glass of Philadelphia, PA. Three of them are shown at the right.

The seven windows represent the gifts of the Spirit as recorded in Isaiah 11: 2-3. They are:

- wisdom
- understanding
- counsel (right judgment)
- fortitude (courage)
- knowledge
- piety
- wonder and awe

