

## Art

### ***St. Mark's Bell Tower and Front of Nave ~ Painted by June Ball***

One of many paintings by local artist and church member, June Ball, that she graciously rotates to lend an interest and beauty to our narthex.



### ***Untitled "Family" ~ by Una Hanbury***



## ***North Wall Lounge Bas-Relief Sculpture***

Una Hanbury was the artist of this work also. It is a series of plaques that tell a story, plaques made of plaster of paris, etched and dusted with black carbon. Each plaque represents an element of the story. It is not uncommon for the Bible to describe the presence of God in three ways, wind, fire, or cloud. The symbol of the wind, the whirlwind is used in this relief. Taken as a whole the form mounted on the wall is in the form of a great whirlwind.

Creation begins at the bottom and the greatest achievement of creation is the human person. One looks down on the top of a person's head and sees form being created out of chaos. The whirlwind offers the breath of life and humanity is born. Humanity falls in the Garden of Eden and it is in desperate need of God's assistance and care.

The second plaque demonstrates humanities passionate plea for assistance, hands in supplication supplement the Hebrew words of the covenant with Abraham, "If you will be my people, I will be your God."

Nearing the top of the arrangement the next plaque speaks the words of Isaiah, "the people who walked in darkness have seen a great light."

The next plaque is the symbol of the birth of Jesus and the whirlwind can be seen as the invasion of God into humanities history.

Then there is a plaque that speaks of the crucifixion followed by the plaque that is the symbol of the resurrection, the phoenix rising from the flames to live again.

The next plaque is the sign of the disciples, twelve of them, who became apostles committed to bring the good news of the gospels to the entire world. The good news has been faithfully proclaimed and in the 16th Century the Lutheran Church had its beginning.

The Lutheran Church embraced the Latin theme, "Sola Fide, Sola Gracias, Sola Scriptura." (Faith alone, Grace alone, Word alone) seen in the next plaque.

The final plaque speaks of the story of our congregation, St. Mark's, a Lutheran congregation, beginning with a few people with little strength and growing into a strong body of Christ with great power that has its destiny in the whirlwind.





## ***Bas-Relief in the Educational Lobby***

Una Hanbury was asked to provide a sculpture in the entrance to the Educational Building. It was decided that the children of the Sunday Church School would be asked to participate. They met in the educational building with Ms. Hanbury and were asked to draw pictures of things that God had made and things that people have made. Ms. Hanbury assisted the volunteers from the congregation who then assisted the children in making clay molds of their drawings, which were then cast in plaster of paris, allowed to dry, and mounted on the wall. Una Hanbury sculpted the central human figures and arranged the contributions of the children. On the right are the items of God's creation; on the left, that which have been made by people. In the center is the human figure with the symbol of power, the lightning bolt held in hand, yet with a flaw symbolized by the snake that curls at its feet. The figure looks to the heavens, "from which comes my help" for though impressively powerful, humanity is in need of the forgiveness, intervention, and love of God.



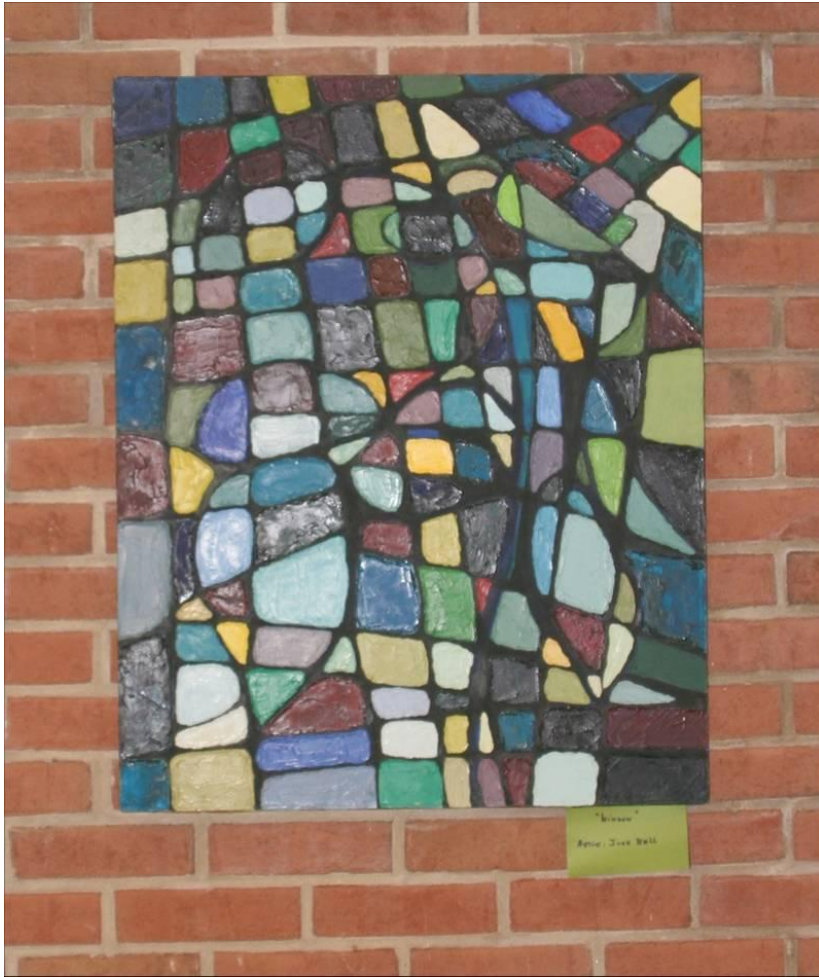
## ***Three Crosses***

The chancel as designed by the architect, Milton Prassas, when constructed in 1960 featured three tall crosses of unequal size. The symbolized the crucifixion and resurrection of Jesus. One cross was small and black representing one of the thieves who scorned Jesus. The other small, white cross spoke of the other thief who said to Jesus seven words that we all wish to say, "Lord, remember me when you come into your Kingdom." Jesus answered, "Today, you will be with me in paradise." This cross represents the people of faith who will inherit the promise of God that they will have life. The central burnished brass cross represents Jesus, Savior. The cross is empty. He is risen. These three crosses are now mounted on the wall at the entrance to the garden off the narthex. They were placed there in 1991 when the nave and chancel were renovated.



## Oil Painting by June Ball

One of many paintings by local artist and church member, June Ball, that she graciously rotates to lend an interest and beauty to our narthex.



## Historical Photo

Springfield Area—The newly developed area of Fairfax County, VA, just north of the Franconia-Springfield cloverleaf on Shirley highway provides the subject for this week's air view. This is the seventh in a series showing the growing suburbs of Washington. This part of Springfield is two years old this month and already has about 500 homes. Another 160 are to be built in the section (foreground) where the streets have been graded and some trees left standing. Principal roads are marked, and an 11-acre tract (A) has been reserved for the area's second elementary school. Other landmarks are (B) the gravel pits and quarry of the Northern Virginia Construction Co., (C) The Edsall road overpass and (D) the Washington Quartermaster Depot at Cameron Station, Alexandria. The Washington Monument, 11 miles away, also is visible, (E) First home of St. Mark's Lutheran Church (old house). Star Staff Photo by Randolph Routt.

