

Appraisal of a Building Product



ACE Butyl Tape System - A flexible, waterproof tape jointing system for use with renders & plasters.

Contents

1 General Information

- 1 Description of Product
 - 2 Trade Literature
 - 2 Scope & Limitations
- ### 2 Detailed Information
- 2 Technical Description
 - 2 Product Data
 - 2 Handling & Storage
 - 2 Specific Performances with the Building Code
 - 2 How to Install the Product

2 Basis of Appraisal

- 3 Product QA Information

3 Verification of Compliance

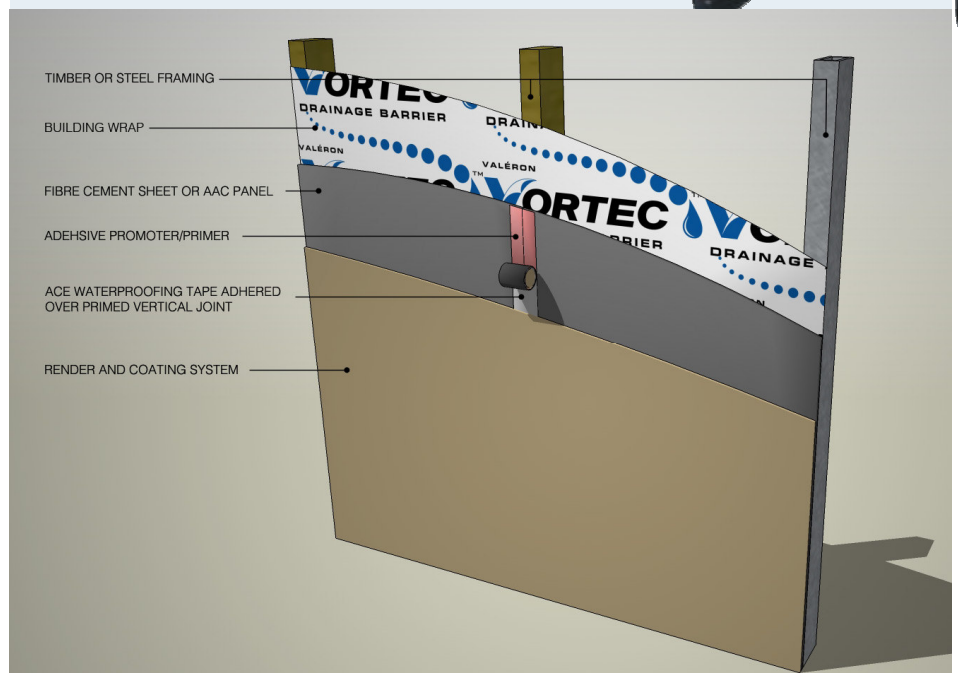
3 Installation Information

3 Ordering Information

3 Health & Safety Information

4 Conditions of this APPRAISAL

5 Contact Details



General Information

Description of Product

ACE Butyl Tape is a butyl rubber self-adhesive tape with nonwoven polyester backing able to be applied over masonry, or expanded (EPS) or extruded polystyrene (XPS) joints, used in conjunction with special adhesion promoters, that can then be plastered or rendered over. Expanded

polystyrene substrates require ACE Spray Adhesive applied to the area where the tape is to be adhered, while brick, concrete and AAC substrates require ACE Binder/Sealer to be applied where the tape is to be adhered.



CA902 Completed June 2010
Verification of Clauses B2 and E2
of the New Zealand Building Code

Insulation Wholesalers Ltd

Trade Literature

The **ACE Butyl Tape** Data Sheet Version 1 ref: BT09 dated April 2009 describes installation of tape.

Applicant

The applicant is Insulation Wholesalers Ltd.

Scope & Limitations

ACE Butyl Tape must be used in conjunction with components of a wall assembly that comply with E2/AS1 in all respects, except as varied herein, in order to meet the Performances of the Building Code claimed in this Appraisal. This limitation includes restricting the use of the products to timber framed buildings complying with NZS 3604: 1999 'Timber Framed Buildings' and to wall wraps that comply with Table 23 of E2/AS1.

ACE Butyl Tape when installed shall not be left exposed to the weather for more than 24 hours.

E2/AS1 refers to the acceptable solution contained in the Department of Building and Housing's Compliance Document for New Zealand Building Code Clause E2 'External moisture', Third Edition including Amendments 1 and 2 and Erratum 1.

ACE Butyl Tape has been appraised as an alternative solution to E2/AS1.

Detailed Information

Technical Description

ACE Butyl Tape is made from a butyl rubber self adhesive tape with nonwoven polyester backing. The butyl rubber adhesive side exhibits excellent adhesion to prepared nominated masonry substrates that have been treated with ACE Brush Binder/Sealer.

The tape also exhibits excellent adhesion to prepared extruded and expanded polystyrene substrates that have been treated with ACE Spray Adhesive.

The tape is able to be used as a jointing medium over which plaster or render can be applied, creating a hidden control joint.

ACE Butyl Tape comprises of nominally 60 mm wide rolls

containing 20 lineal metres. ACE Butyl Tape can be readily cut to length using a sharp knife or scissors.

Product Data

The 0.75mm thick product is supplied in rolls of 20 lineal metres. The product is impervious to water and impervious to moisture vapour.

Storage & Handling

ACE Butyl Tape can be stored indefinitely when kept dry and out of the weather.

Specific Performances with the NZ Building Code

Clause B2 - Durability

ACE Butyl Tape when used in accordance with this Appraisal will meet Performance B2.3.1(b) (15 years) of the New Zealand Building Code. In other words, the product as appraised will be durable for the life of the building.

Clause E2 - External Moisture

ACE Butyl Tape contributes to a cladding system meeting the performance requirements of clause E2.3.2 of the Building Code when installed in accordance with this Appraisal.

In other words, the product as appraised will prevent the loss of thermal energy that could cause "illness, injury or loss of amenity".

How to Install the Product

The installation of ACE Butyl Tape is described in Data Sheet Version 1 ref: BT09 dated April 2009.

It is important that substrates are clean and free of loose material before the relevant binder/sealer is applied.

Basis of Appraisal

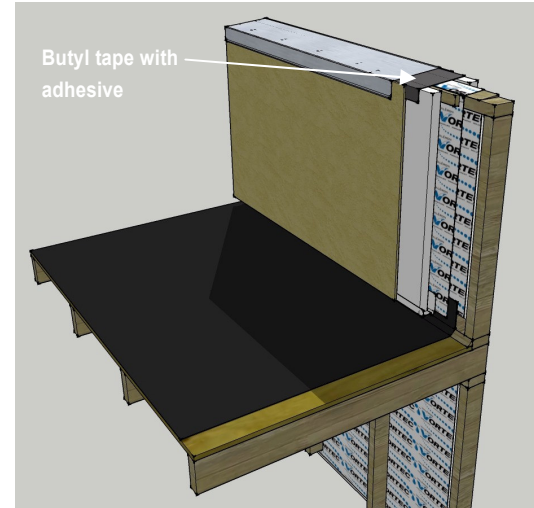
Clause B2 - Durability

For assessing the durability of ACE Butyl Tape, testing using accelerated aging on nominated substrates was carried out.

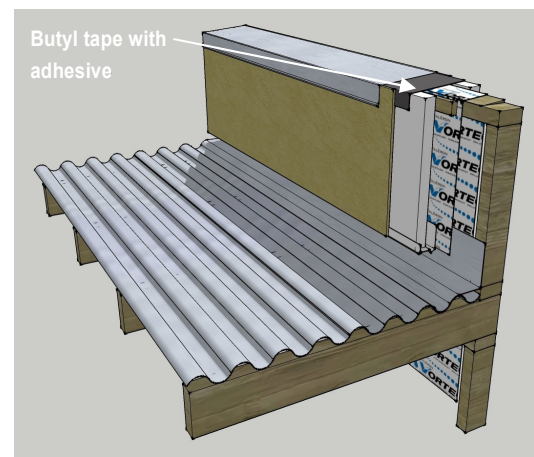
E2 - External Moisture

For assessing the ability of the tape on a nominated substrate to contribute to meeting the performance requirement of E2.3.2,

Insulation Wholesalers Ltd



Parapet to deck



Parapet to roof



testing was carried out.

Product QA Information

ACE Butyl Tape is manufactured to an in-house quality standard, using ISO 16949 and 9001 as its overall QA criteria.

The ACE Spray Adhesive and the ACE Brush Binder/Sealer products are also manufactured to in-house quality standards.

The New Zealand importer has its own QA System which has been reviewed by BEAL and found satisfactory.

Each roll of product is uniquely identified in compliance with AS/NZS 4859.1.

Installers of the product are required to be familiar with the supplied Installation Literature.

Maintenance Information

The ACE Butyl Tape requires no maintenance provided it has been installed correctly.

Verification of Compliance

[Methods suggested by the Department of Building and Housing - refer www.dbh.govt.nz]

- In service history
- Trade literature
- A calculation or test method from a laboratory or testing facility

This appraisal uses the in service history and trade literature provided by the manufacturer, together with the testing carried out by BEAL as the 'methods' for demonstrating compliance with the relevant clauses of the Building Code.

The following documentation was consulted:

- New Zealand Building Code
- Acceptable Solutions E2/AS1
- BEAL Test Report TR090325a - Tensile Strength
- BEAL Test Report TR 090325b - Adhesive Bond Strength
- BEAL Test Report TR090326 - Water Resistance
- An assessment for ease of use carried out by BEAL.
- Technical and trade literature provided by the manufacturer.

Installation Information

The BP Tape can be installed by any competent tradesman using the appropriate tools and equipment.

The **ACE Butyl Tape** Data Sheet Version 1 ref: BT09 dated April 2009 describes installation of the tape.

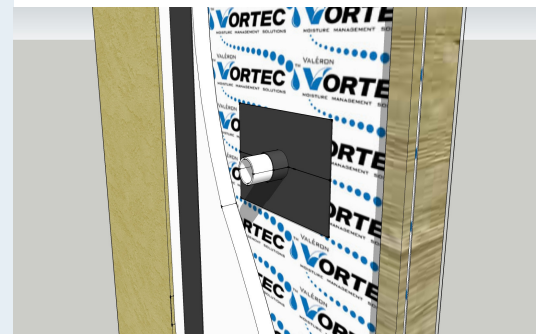
Ordering Information

ACE Butyl Tape can be ordered from Insulation Wholesalers Limited. Refer page 5.

Health & Safety Information

ACE Butyl Tape presents no known health and safety issues when installed.

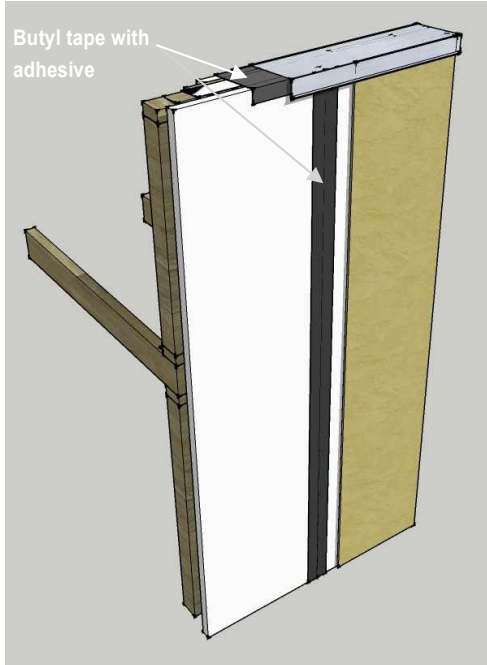
Insulation Wholesalers Ltd



Pipe penetration



Conditions of this Appraisal



Vertical control joint

1. The Products continue to comply with the quality assurance measures of Insulation Wholesalers Ltd. These quality assurance measures have been viewed and approved by BEAL.
2. The products comply with the conditions of this appraisal and with the **ACE Butyl Tape** Data Sheet Version 1 ref: BPT09 dated April 2009 describes installation of tape.
3. Insulation Wholesalers Ltd continues to have the product range reviewed and quality assurance programme audited annually by BEAL.
4. The overall quality and performance of the products are maintained.
5. Insulation Wholesalers Ltd. shall notify BEAL of any changes in specification or quality assurance measures prior to them coming into effect.
6. BEAL staff use BQI Interim Performance Standards (in the absence of a relevant AS/NZS Standard) for carrying out field-testing and assessment of External Moisture factors. These assessments are performed either on site or in BEAL's facilities and carried out by experienced and qualified specialists.
7. The system has been tested against one or more of the following criteria which was applicable at the time of the initial assessment:
 - a measurable criteria described in the Building Code
 - a relevant New Zealand or Australian or International Standard
 - a requirement set out in a Building Quality Institute Interim Performance Standard
 - an appropriate requirement set out in a New Zealand Department of Building & Housing document
8. BEAL's verification of the building product or system as complying with one or more criteria is given on the basis that the criteria used were those that were used to demonstrate compliance with the Building Code at the date of this appraisal. In the event that the criteria are withdrawn or amended at a future date, this Appraisal may no longer remain valid.

BEAL's approval logo is the assurance that a building product complies with the requirements of the New Zealand Building Code.

Using the latest in Australasian and overseas testing and assessment methods and criteria, BEAL's logo is a sign of confidence -

- ◆ Confidence for the architect or designer that the product literature and details will meet their specific needs;
- ◆ Confidence for the Building Certifying Authority that the product has been evaluated in a rigorous manner to demonstrate or otherwise, compliance with the relevant Clauses of the NZ Building Code;
- ◆ Confidence for the builder and installer that the Technical Manuals are clear and easy to understand.

BEAL's 'Approval Logo' is being promoted throughout the building industry thus ensuring maximum exposure for all products that carry this logo. For further information contact Colin Prouse at BEAL on (+64) 4 233 6661 or e-mail at sales@beal.co.nz



Contact Details

Insulation Wholesalers Ltd

The distributor of the ACE Butyl Tape is Insulation Wholesalers Ltd.

Insulation Wholesalers Ltd. can be contacted at:

Head Office 06 329 8065

Fax 06 329 8064

E-mail sales@insulationws.co.nz

Web Site www.insulationwholesalers.co.nz

Sales enquires to Mr. Mathew Noud



BEAL can be contacted at:

Head Office 04 233 6661

Fax 04 233 6662

E-mail sales@beal.co.nz

Web Site <http://www.beal.co.nz>

Further information about this Appraisal can be directed to Mr Colin Prouse