



## **READ FIRST**

### ***Welcome to the Anthropological Sport Culture Aptitude Assessment Test.***

This simple test is used to measure your level of mastery regarding basic sport culture knowledge. Upon passing the test, you will receive your certificate of basic mastery and qualify for advanced courses and assessment. *Please allow 2-5 weeks for delivery.* You may retake the test up to three times.

On your booklet you will find an identification number. Please make sure it matches your scantron sheet. In a few moments, your instructor will announce the beginning of the test. You will have fifty-five minutes to complete all the questions including the short essay. Any talking will be considered cheating and the speaking party will be promptly asked to leave the test site. Any person leaving the sight of the instructor during the test shall have their test revoked. All tests must be relinquished to the instructor at the end of the time period to be accepted. Please limit your essay to the pages provided. Using your shoe as a reference is allowed for this exam; however *you may not have notes regarding this specific test on any area of your shoe.*

### **IMPORTANT:**

**Use only a #2 pencil (provided) on the scantron sheet.**

Good luck!

**PLEASE TURN THE PAGE TO START**



## MULTIPLE CHOICE SECTION

Choose the *best* answer

1) Two eastbound trains leave the Westside Station approximately twenty minutes apart. Both trains A and B travel at a velocity of 80 kilometers per hour for the 300 mile trip to the Southside Station. Train A carries a shipment of 202 pairs of Paris Dunks. Train B carries a shipment of 202 pairs of fake Paris Dunks. The first train to arrive carries shoes with varying patterns and only one set of laces. Which train arrived first?

a. Train A

b. Train B

2) Which Jumpman logo is correct?

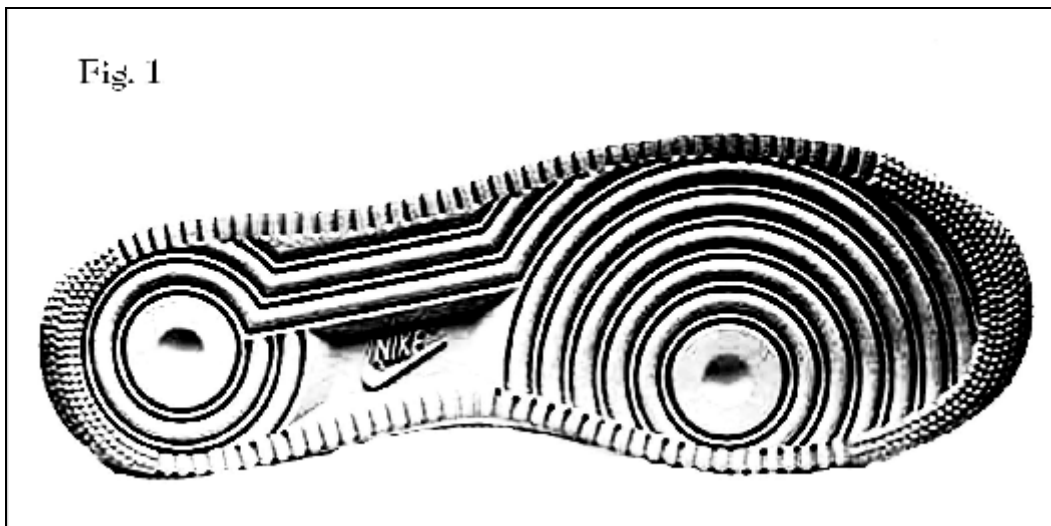


3) Arrange these shoe models in chronological order based on the original release date.



- a. 1,4,3,2
- b. 1,3,4,2
- c. 3,1,4,2
- d. 4,3,1,2

4) The tread mark from Fig. 1 is the sole of:



- a. Air Force 1
- b. Terminator
- c. Jordan II
- d. Vandal

5) Which is the VI?



6) The first shoe to implement visible air technology.

- a. Air Max I
- b. Air Max II (Air Max light)
- c. Air Max III (Air Max 90)
- d. Air Max IV (Air Max BW / Air Max Classic)

7) NIKE SB is:

- a. NIKE Stability Balance
- b. NIKE Skateboarding
- c. NIKE Surfboarding
- d. NIKE Stable Balance

8) Match the athlete in Fig. 1 to their “signature” shoe.



Fig. 1



a.



b.



c.



d.

9) Identify the best representation of the Jordan VI lace lock.



a.



b.

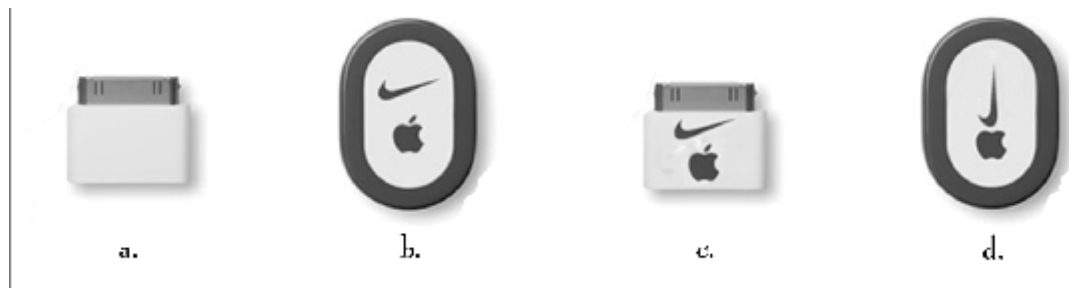


c.



d.

10) Which illustration most accurately represents a Nike Plus sensor?



11) On May 27, 1990 the freighter Hansa Carrier encountered a severe storm which washed five containers of approximately 80,000 Nikes overboard. It has been estimated that four of the five containers opened, releasing 60,000 shoes into this body of water:

- a. Pacific Ocean
- b. Atlantic Ocean
- c. Mediterranean Sea
- d. This did not happen

12) Identify the newest shoe based on the original release date.



13) This player is not included in the “SECOND COMING.”

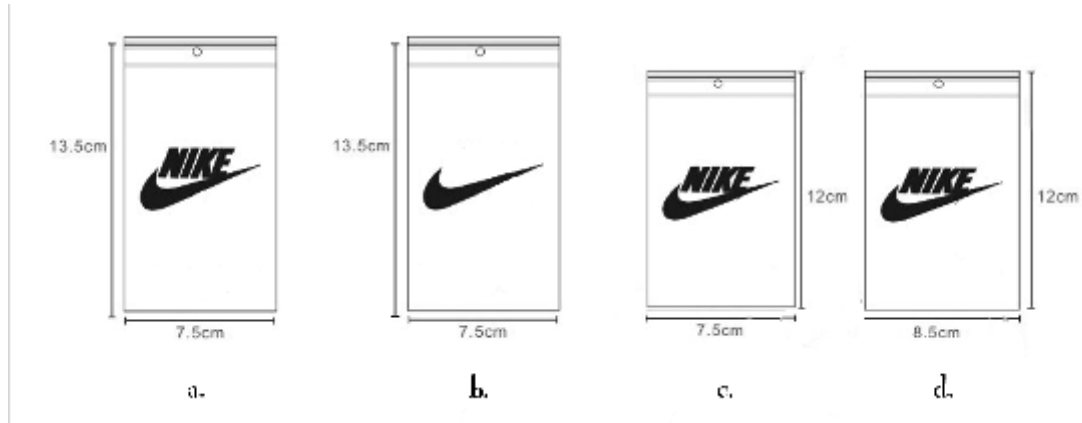
- a. Tony Parker
- b. Kobe Bryant
- c. Amare Stoudemire
- d. Ben Wallace

14) Approximate length of standard Nike Men’s Dunk High-Top Laces.

- a. 22”
- b. 34”
- c. 46”
- d. 58”



15) Choose the authentic Dunks based on the Shoelace bag.



16) Name the rapper of the following classic hip-hop line:

*“And I’m a Nike head. I wear chains that excite the feds.”*

- a. Notorious B.I.G.
- b. Nas
- c. Jay-Z
- d. 2pac

17) Fig. 1 would be most associated with:

Fig.1



- a. Air Stab
- b. Air Max 180
- c. Blazer
- d. Nike Free

18) Below is a standard Nike Box Label. What information goes in the section marked X?



- a. Origin of Assembly
- b. Color
- c. Shoe Identification Code
- d. Shoe Name

19) Colorway refers to:

- a. One main color
- b. The color in contact with the sole
- c. Color Scheme
- d. The act of coloring white Air Force Ones.

20) “Flight” is most associated with this shape:

- a. Rectangle
- b. Square
- c. Octagon
- d. Triangle

21) A “pack” refers to:

- a. An arch support for running shoes
- b. A group of shoes released with a shared theme
- c. Buying 5 pairs of the same shoe
- d. A group of people who own the same shoe

22) “A1’s” refers to:

- a. White on white Air force 1 shoes
- b. Air Force 1 shoes
- c. Mint condition shoes
- d. Newly worn shoes

23) This classical pianist was a featured guest on Mister Robinson's Neighborhood:

- a. Rudolf Firkusny
- b. Luc Devos
- c. Barbara Hesse-Bukowska
- d. Vladimir Horowitz

24) Barkley vs. \_\_\_\_\_.

- a. Pippen
- b. Robinson
- c. Wade
- d. Godzilla

25) In the song "Air Force Ones" by Nelly and the St. Lunatics, how many pairs are needed?

- a. One
- b. Two
- c. Three
- d. Four

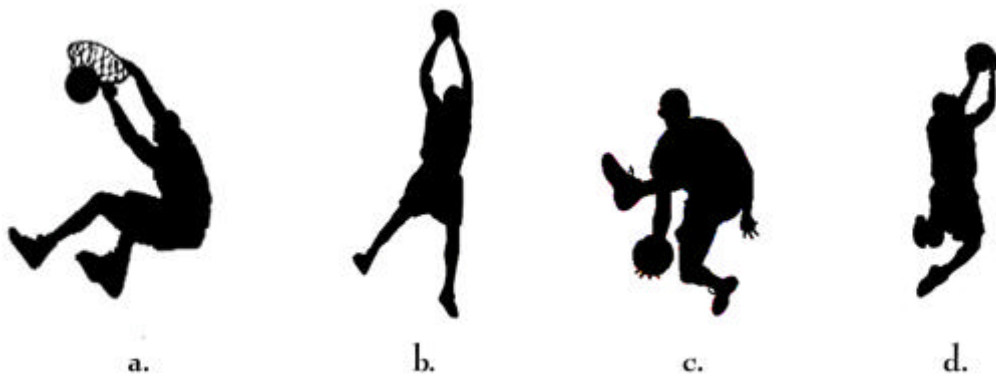
26) Retros refer to:

- a. An old shoe
- b. A re-released shoe
- c. A vintage shoe in perfect condition
- d. A new shoe with a few characteristics of an older model

27) “Wifey Airs” are:

- a. Limited Air Force 1’s with a diamond ring logo
- b. Air Force 1’s worn under a wedding dress
- c. Wearing the same shoes as your boyfriend
- d. Boys shoes

28) Which logo is associated with Rasheed Wallace?



29) This shoe has no air-sole:

- a. Pegasus
- b. Cortez
- c. Jordan I
- d. Air Zoom

30) Nike Headquarters is located on:

- a. One Bowerman Drive
- b. One Jordan Drive
- c. One Prefontaine Drive
- d. One Knight Drive

31) "DS" typically refers to:

- a. Distinct Sole
- b. Distinct Marking
- c. Backwards swooshes
- d. Mint Condition

32) Michael Jordan was fined \$\_\_\_\_\_ a game by the NBA for wearing "outlawed" Air Jordans.

- a. \$5,000
- b. \$10,000
- c. \$15,000
- d. \$20,000

33) The banned Air Jordan referred to in question number 29:

- a. Jordan I
- b. Jordan II
- c. Jordan III
- d. Jordan IV

34) Wearing tight jeans tucked behind the tongues of high-top Dunks is a style most associated with:

- a. New Orleans
- b. New York
- c. Los Angeles
- d. Dallas

35) In the movie *Space Jam*, “Hare Jordan” refers to:

- a. Roger Rabbit
- b. The Easter Bunny
- c. Bugs Bunny
- d. Slam Dunk Shot Bunny

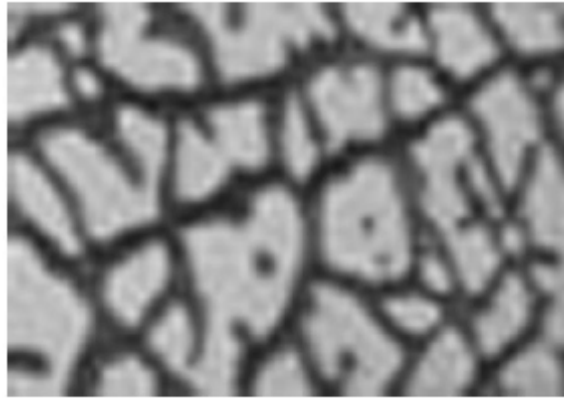
36) Nike is known as \_\_\_\_\_ on the New York Stock Exchange.

- a. NKE
- b. NIK
- c. NKI
- d. NKY

37) The Spiz’ike is a combination of the Jordan models:

- a. 1,2,3,4,5
- b. 1,3,7,20,22
- c. 3,4,5,6,9,20
- d. 7,8,9,10,11

38) This classic pattern is commonly referred to as:



- a. Cement
- b. Elephant
- c. Pavement
- d. Crocodile

39) Which of these shoes features a strap?

- a. Air Force 1 Low
- b. Air Trainer 3
- c. Nike Terminator
- d. Air Max 180



40) This screen shot from the classic EA Sports videogame (see Fig.1) is well known simply as:

Fig. 1



- a. MVP Slam Hoops
- b. Dr. J Dunk Out 2
- c. Jordan Vs. Erving
- d. Jordan Vs. Bird

41) Spike Lee's alter ego is:

- a. Mars Blackmon
- b. Mars Blackman
- c. Marz Blackmon
- d. Marz Blackman

42) The famous quote of the character referenced in question 41:

- a. It's gotta be the Jordans
- b. It's gotta be the Nikes
- c. It's gotta be the shoes
- d. It's gotta be the Air

43) Billed as a documentary about sneakers, hip-hop, & the corporate game

- a. Air Movie
- b. Just For Kicks
- c. Sneak Peaks
- d. Laced & Loaded

44) Choose the incorrect "Force" logo.



- a.
- b.
- c.
- d.

45) The Nike SB "Diamond" Dunk designed by Diamond Hardware is commonly known as the \_\_\_\_\_ Dunk.

- a. Tiffany
- b. In Da Ruff
- c. Clarity
- d. Honeymoon

46) Based on the F-22 Raptor, this Jordan features interchangeable double stacked zoom air units.

- a. Jordan XIX
- b. Jordan XX
- c. Jordan XXI
- d. Jordan XX2

47) Which of these illustrations most accurately represents a Dunk shoe?



48) A subsidiary of Nike.

- a. Champion
- b. Bauer
- c. Body Glove
- d. Spalding

49) The sustainability footwear line from Nike.

- a. Measured
- b. Considered
- c. Treaded
- d. Swift

50) The first Jordan to feature the Jumpman logo.

- a. Jordan I
- b. Jordan II
- c. Jordan III
- d. Jordan IV

51) The college school with the strongest ties to Nike.

- a. University of North Carolina
- b. University of Michigan
- c. University of Oregon
- d. University of California

52) This is a “Zoom Air” air-sole.



53) The ultra-exclusive Nike id design lab that features 17 different white and off-white materials for design of exclusive shoes.

- a. 423
- b. 555
- c. 255
- d. 252

54) Old school style of shoelace.

- a. Bonkerz Lacez
- b. Braided “Brooklyn” Lace
- c. Mini Lace
- d. Fat Lace

55) Nike Air is comprised of:

- a. Carbon Trioxide
- b. Sulfur Hexafluoride
- c. Carbon Hydroxide
- d. Helium

56) This concept shoe featured in *Back to the Future 2* is popularly referred to as the:



- a. Future Air
- b. Air Delorian
- c. Fox MJ's
- d. McFly 2015

57) This Jordan sole was inspired by material used on the shoe from question 56.

- a. Jordan V
- b. Jordan VI
- c. Jordan VII
- d. Jordan XX2

58) This shoe is well known for a technology known as Nike:



- a. Shox
- b. Shoxz
- c. Shocks
- d. Shockz

59) Lil' Penny : \_\_\_\_\_

Kermit : Jim Henson

- a. Chris Tucker
- b. Dave Chapelle
- c. Chris Rock
- d. Sinbad

60) Before Nike, Phil Knight and Bill Bowman sold shoes under the name of:

- a. Swoosh Sports
- b. Sprint Athletics
- c. Blue Ribbon Sports
- d. Gold Medal Spikes

61) Which is the Jordan IV?



a.



b.



c.



d.



62) “The LeBrons” consist of:

- a. Wise, Business, Kid, Athlete
- b. Grandpa, Playa, Kid, Baller
- c. Old, New York, Young’n, Hoop Star
- d. Pops, Suit, Kid, Player

63) This classic “Wings” poster (fig. 1) features a quote (fig. 2) from this poet:

Fig. 1

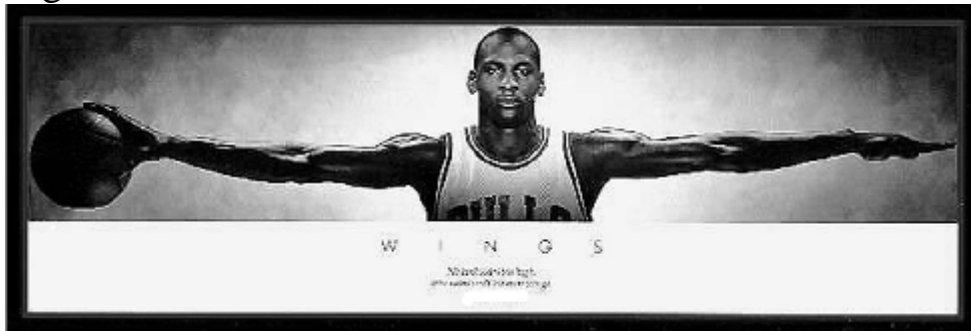


Fig. 2

“No bird soars too high,  
if he soars with his own wings.”

- a. William Shakespeare
- b. William Blake
- c. Emily Dickson
- d. Langston Hughes

64) Rakim, KRS-ONE, Nas, and Kanye West were commissioned to create this original song for the Air Force One 25<sup>th</sup> Anniversary, which was performed only one time.

- a. Legacy is Victory
- b. Better Than I've Ever Been
- c. Presidential Onez
- d. Top Of N.Y. (T.O.N.Y. 25)

65) The most popular Nike running shoe of all-time.

- a. Air Zoom
- b. Air Max 90
- c. Air Max 1
- d. Air Pegasus

66) Andre Agasi's first signature shoe.

- a. Nike Air Response Stop
- b. Nike Air Ace
- c. Nike Back-Shot
- d. Nike Air Tech Challenge

67) Nicknamed "Gangsta Nikes" or "Dopemans."

- a. Jordan VI
- b. Cortez
- c. Pegasus
- d. Air Force 1

68) In the opening credits of *The Fresh Prince of Bel Air*, Will Smith spins around in a chair wearing the:

- a. Air Jordan I
- b. Air Jordan III
- c. Air Jordan V
- d. Air Jordan VII

69) Michael Jordan covered the logo of this official Olympic sponsor while receiving his gold medal in Barcelona.

- a. Adidas
- b. Reebok
- c. Puma
- d. New Balance

## TRUE OR FALSE SECTION

70) The Mtv show “Battlegrounds” is about street basketball in Los Angeles.

- a. True
- b. False

71) These Nike “Air Pressure” shoes have a button on the back to pump them up.



- a. True
- b. False

72) Nike id is only available online.

- a. True
- b. False

73) Nike shoes tend to run large in size.

- a. True
- b. False

74) In the movie “Roger and Me,” Michael Moore is ultimately refused a meeting with Phil Knight.

- a. True
- b. False

75) If a shoe is too hard to find, it is acceptable to purchase an exact “bootleg” version.

- a. True
- b. False

76) Between the Dunks marked a and b, a is the correct representation.

a.



b.



- a. True
- b. False

77) The “Bape sta” greatly resembles the Air Jordan I.

- a. True
- b. False

78) Ebay provides visual guides to avoid buying counterfeit shoes on their website.

- a. True
- b. False

79) Most Nike boxes have the statement “Please Recycle.”

- a. True
- b. False

80) The Air Force 1 was discontinued the following year of the 1982 release.

- a. True
- b. False

81) ACG stands for All Conditions Gear.

- a. True
- b. False

82) The Air Jordan XVII retailed for \$200 and came in a silver suitcase.

- a. True
- b. False

83) The Air Max 360 was first released in 2007.

- a. True
- b. False

84) The Jumpman silhouette is actually Jordan performing a ballet move.

- a. True
- b. False

85) The washing machine is ideal for washing shoes as long as they go into a pillowcase.

- a. True
- b. False

86) In Greek Mythology, Nike is the Goddess of Victory.

- a. True
- b. False

87) A “sneakerhead” is slang for a cardboard shoe insert designed to preserve the shape of the shoe.

- a. True
- b. False

88) The location of arrow “a” would provide the most information regarding authenticity.



- a. True
- b. False

89) Phil Knight is the President and CEO of Nike.

- a. True
- b. False



90) 100% of LiveStrong bracelet profits are donated to Multiple Sclerosis research.

- a. True
- b. False

91) Nike is *still* in the process of acquiring every Nike shoe ever made for archival purposes.

- a. True
- b. False

92) Kevin Garnett was denied Nike sponsorship after he publicly complimented a reporter's Adidas.

- a. True
- b. False

93) Nike used the song "Instant Karma" before using "Revolution" in a commercial.

- a. True
- b. False

94) Demand for Pigeon Dunks caused a riot.

- a. True
- b. False

95) This is a Dave White painting.



- a. True
- b. False

96) The “Air Jordan” statue outside the United Center features Air Jordan IX’s.

- a. True
- b. False

97) “Hypebeast” is a website devoted to shoelaces.

- a. True
- b. False

98) The Jordan VI’s have been called the “flower-power” or “Bunnies.”

- a. True
- b. False



