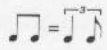


# Like It Is

Tracks 4 & 11

John Eacott



$\text{♩} = 130$  Shuffle Blues

First system of bass notation. Chord: F. Dynamics: *f*, *p*, *f*.

Second system of bass notation. Chords: B<sup>b</sup>5, F<sup>7</sup>.

Third system of bass notation. Chords: Gm<sup>7</sup>, C<sup>7</sup>, F.

Fourth system of bass notation. Chord: B<sup>b</sup>7. First and second endings.

Fifth system of bass notation. Chords: F<sup>7</sup>, Gm<sup>7</sup>, C<sup>7</sup>, Gm<sup>7</sup>. Dynamics: *f*.

Sixth system of bass notation. Chords: C<sup>7</sup>, Gm<sup>7</sup>, C<sup>7</sup>, F. Dynamics: *f*.