

STICKY IDEAS

A SHOWCASE OF STICKY IDEAS BY
A GROUP OF EXCITING TALENTED ARTISTS
PRACTISING IN VARIOUS FIELDS OF ART



OBZ festival
2007

I ♥
OBS.

GROUP EXHIBITION OF BUSINESS ACUMEN FOR ARTIST DELEGATES, SEP-NOV 2007, A COLLABORATIVE
COURSE OFFERED BY UCT GRADUATE SCHOOL OF BUSINESS AND OBSERVATORY COMMUNITY CENTRE

BRADLEY KNIGHT

- Radio presenter at Good Hope Fm, Weekend Breakfast 6am-9am
- Digital Media Developer at UWC, E-Learning Department
- Entrepreneur, owner of Knightro Productions cc.

Knightro Productions cc is a young company that is in the process of establishing itself as an emerging player in the market, to create engaging content for cinema, television, the web and cellphone users, with a particular focus on harnessing new media technologies.

Knightro Productions is fortunate to have a mixed client base of large corporates and individuals this soon in it's start-up period, and currently delivers tailor-made corporate products to it's clients, which is then used for marketing and promotional purposes.

Knightro Productions also generates compressed video content for online applications such as company or personal websites, and has a particular interest in using new media technologies to broaden it's offering.

The company offers services in camerawork, lighting, and digital video editing, and includes the entire process from pre-production to post-production, including packaging.

Contact Bradley Knight on 082 682 3985, or mail bradlknight@gmail.com



PAUL MUSPRATT-WILLIAMS

Encore is a one stop information resource on the performing arts in the Western Cape. The diary gives advance notice of performances and gives the reader information such as name of performance, genre, venue, dates, times, prices, and a brief description of the show. We also cover a wide range of performing arts ranging from mainstream, fringe, and amateur to school productions.

The aim of Encore is to reach out to existing and new audiences. The monthly Encore diary is e-mailed directly to 800 people.

Should you require any further information please contact Paul Muspratt-Williams at 072 947 6147 or e-mail encore@theweb.co.za

JACQUELINE DOMMISSE



072 418 4524 light@intekom.co.za

www.theatreconversations.wordpress.com

Hearts & Eyes Theatre Collective is a theatre company founded in 1992, by Peter Hayes. Peter is an actor, director, playwright, art director, interior designer... with one true passion: the theatre. After many years of functioning on a project to project basis, raising funds for each production that he mounted, Peter has decided to devote time and energy to realising the dream of a full-time theatre company.

Peter is joined by Jacqueline Dommissse who has been an associate artist of Hearts & Eyes since 1997, both performing and directing. She also directs for Remix Dance Company and managed the performing arts department of AMAC, Arts and Media Access Centre (previously Community Arts Project).

Pushing the boundaries of theatre through style or content, Hearts & Eyes Theatre Collective is committed to confronting topical social issues and challenging cultural stereotypes. We aim to achieve this by creating theatre which is simultaneously thought-provoking, accessible, educative as well as entertaining.

Our company name comes from the movie, Jesus Of Montreal, a story about actors making a play. Towards the end of the movie the lead actor is fatally injured. Having no family the doctors ask his friends, and fellow performers, if they could use this brain-dead man's organs in transplants. Permission is given and without delay, his heart and his eyes are transplanted. For us this symbolises what a director gives his actors and an actor her audience: their heart and eyes.

CLIFF PERUSSET

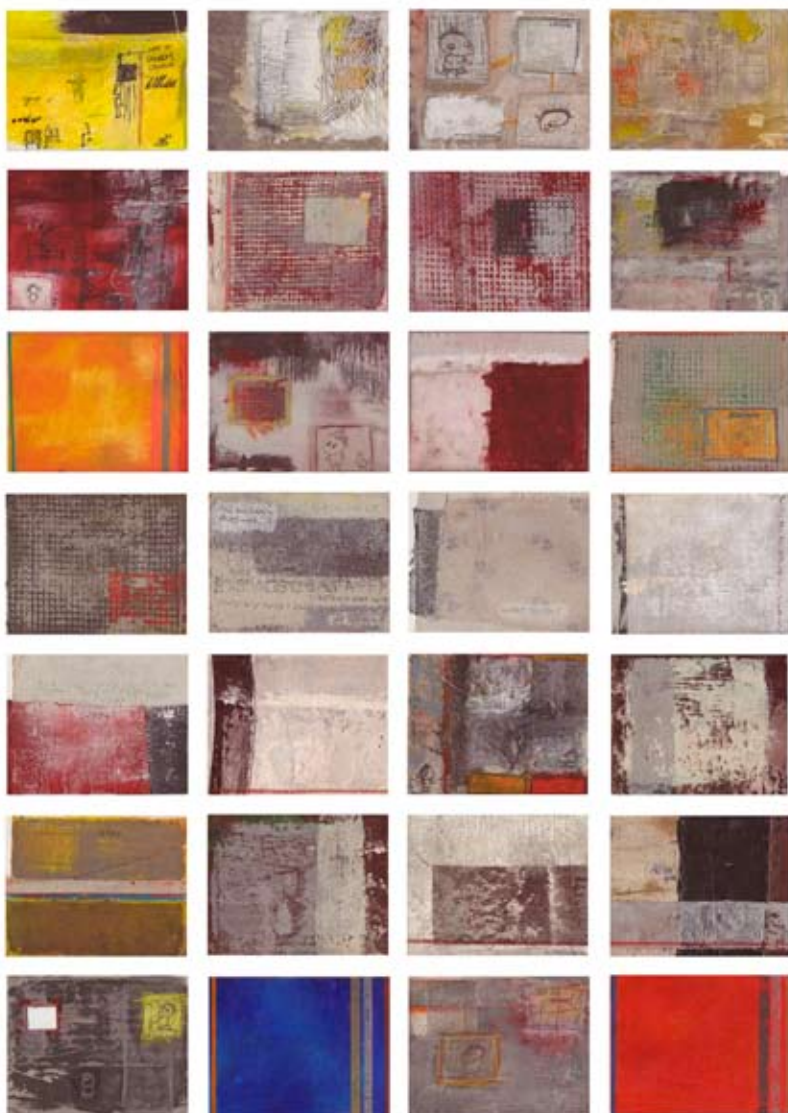






clifftop@telkomsa.net 072 329 5572

CARLA DU PLESSIS



Pieces of Ebb and Flow

My art is formed by the conceptual and theatrical insights of Fine Arts. I feel that the divide between commercial, 'accessible' art and fine art is too rigid. Through my work I attempt to bridge this divide by making conceptual understanding accessible to a wider market and impart some of the knowledge I have to society.

Ebb and Flow is a collection of unique and individual pieces of canvasses that reflect a certain number of days in my life. The aim is to start a new, individual canvas per day and to finish that piece the same day. Personally, the aim of this project is to give me space to play and experiment and not get 'precious' about the painting. Through the everyday creative process, I not only deal with the formal aspects of painting (e.g. different techniques, materials, colour etc.), but inevitably also the emotional ebb and flow of the day. The individual pieces also reflect the external day-to-day expected and unexpected events. The format of the exhibition will also reflect how I cope with everyday life and show that one cannot always solve external as well as emotional issues in one day. The viewer therefore gets a 'sneak peak' into my day and will discover various aspects to which they can relate.

The title, Ebb and Flow, not only refers to everyday creative ebbs and flows as well as scheduled ebbs and flows, but also the emotional ebbs and flows of every day. These three elements are interrelated and inevitably influence one's life on a daily basis, which is reflected in the individual pieces. The title also relates to the inherent likes and dislikes of individuals -there will be pieces you will like and there will be pieces you will dislike. The viewer will notice different, innovative details on examining and re-examining the individual pieces. They will discover something unexpected in the individual pieces through the ebb and flow of looking.

The work is not superficial as it is a personal, honest journey of self-discovery dealing with various emotions. Every piece tells a story, but I do not force a narrative. I rather want to invite the viewer to discover and create their own narrative thereby inviting an open dialogue between me, them and the work. In this exhibition, the viewer is likely to discover at least one piece, which will resonate with them.

083 700 7516 www.art2rent.co.za carladup@gmail.com

ELAINE WOODBRIDGE



Repurposed glass bottle vases by Elaine Woodbridge



Seventy-five percent of what is thrown away in the average household can be recycled and 9 percent of this is glass. Recycling and repurposing glass saves energy, lowers emissions, reduces landfill and quarrying. Elaine collects all types of glass bottle from olive oil, vinegar, wine and spirits to water, and repurposes them to make simple, stylish vases. The bottles are softly reshaped using a heat process, sawn off and hand ground to reshape the necks. All have a silky, matt finish and look great in groups with individual blooms or grasses.

WOO-MEN PLUSH TOYS

Woo-men plush toys are original comic character designs. Each is hand made and no two are exactly the same. Our 15 characters each have a unique and humorous personality. We use top quality fleece, felt, fur buttons and resilient upholstery stuffing. Woo-men are quirky, immediately appealing and irresistible to touch. Adults love and collect them as much as kids.

Elaine Woodbridge: 021 788 8249 072 698 8214
info@woomen.co.za



ELSKE HENDERSON

Elske Henderson is a strategic marketing and business consultant, who followed her soul from the corporate arena to the world of art.

The Artist:

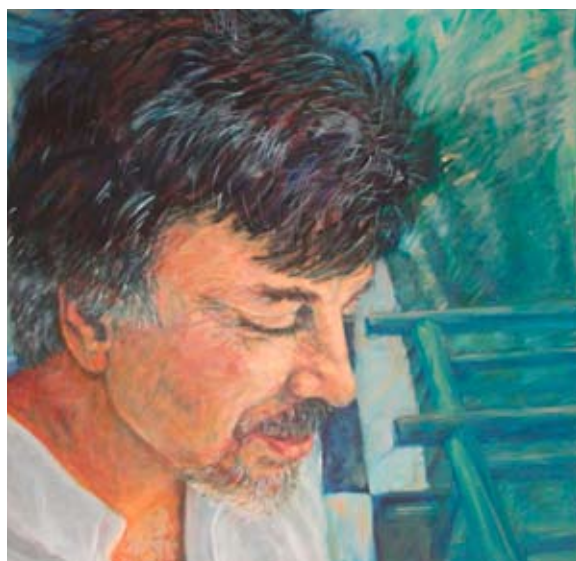
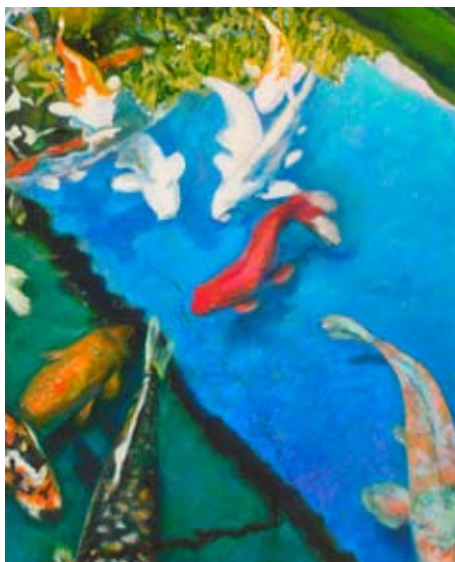
Elske has started developing as an artist in oils, focusing on subject matters which touch her everyday life. A passion for fish, bones and family has led to explorations in these specific themes.

The Artist's Touch:

Elske has used her background in marketing, and combined it with her love of art to start a new art consultancy: The Artist's Touch. The consultancy provides advice on which affordable art pieces (paintings, sculptures and exceptional pieces) would bring life to a specific space, be it interior or exterior. The Artist's Touch therefore provides emerging artists with a vehicle to market their art to decision makers in the interior design, architecture, hospitality and tourism industries.

Elske Henderson

mobile 082 337 1033 email elske@adept.co.za fax 086 511 0122



FERDINAND HENNING

Ceramicist



084 800 7813 ferdinandh@telkomsa.net

LONWABO JOBODWANA



072 1982 387 u.lonwabo@yahoo.com

JANE MCILLERON



jmcilleron@discoverymail.co.za Cel: 083 331 8935

JESSICA FINKELSTEIN



Wildfire offers the full spectrum of graphic design, from Corporate IDs, brochures, catalogues, packaging to signage and websites.

Wildfire is a metaphor for regeneration and growth.

Wildfire is about new concepts and new energy.

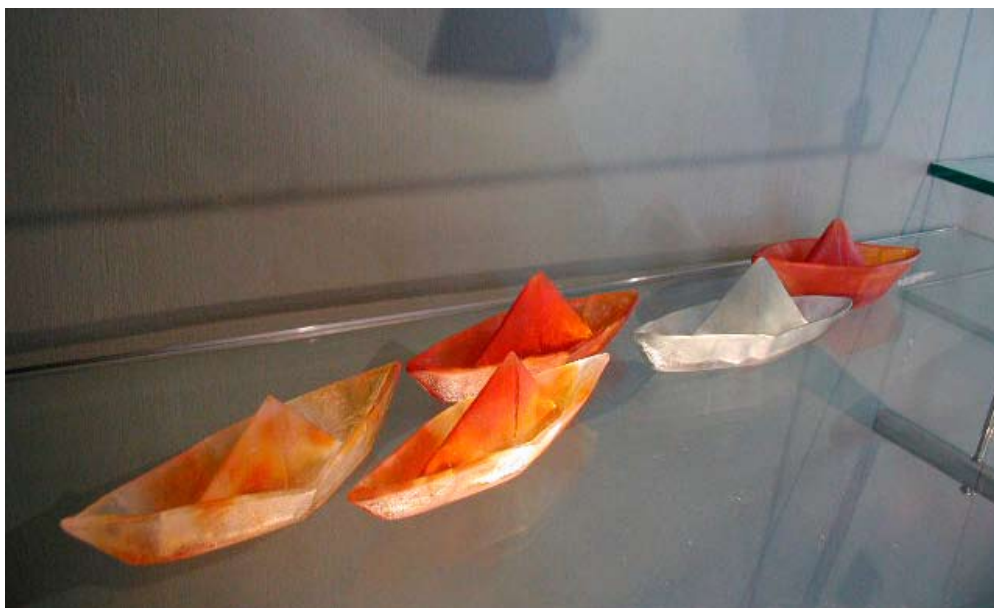
Wildfire will ignite your business sales, turnover and growth

We offer graphic design and visual communication solutions that add fire to your image, brand and your business

C: 082 831 2923 T: 021 531 8246 E: jessica@glolink.co.za



REBECCA TOWNSEND



The most precious thing for me is the possibility to see the beauty of the world around me, to cherish and celebrate every intricate detail of the veins in the leaves... or the silhouette of a flower...'

The role of the artist is that of trickster, reflecting the modern conditioning of consumer culture, attempting to distort the image back, so that the audience may look at it, contemplate it, without feeling attacked, and be motivated to be involved in this world we live in.

What makes something precious for you?

Perhaps it is an object shared with someone special? Or it could be a memento from a previous generation?

Something we've nurtured or cared for?

Something we've made with our own hands?

Or something that for some reason has immense beauty in our eyes...

In the past, glass was a precious material, used to hold precious substances, protecting and holding them. Today it is mass-produced into a slick, unnoticeable container for mass produced drinks and medicines, and even the once precious, life-giving properties of medicines are taken for granted and seen as everyday, rather than the precious and venerable substances they are.

In her first solo exhibition Rebecca Townsend invites the viewer to come and explore with her the beauty in the every day, to find what is precious to each of us and take a closer look at the world we live in.

'Precious' - an exhibition of cast and fused glass objects and installations, is showing at the Irma Stern Museum in Cecil road, Rosebank, Cape Town. The exhibition runs from the 4th to the 22th of March 2008.

cthruza@yahoo.com 072 309 2072

RUTH LEVIN

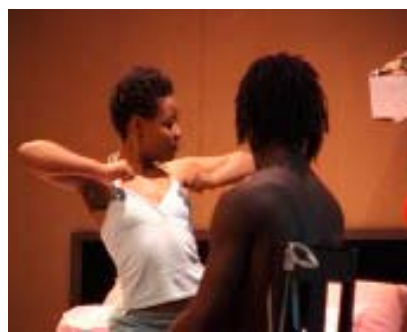
Ruth Levin works as a director, choreographer, performance artist and coach.

She has an MA in Theatre & Performance (UCT) and a Dip. in Acting (Drama Centre London). In 2000 Ruth was invited to be a participant on the Directors Course at The Royal National Theatre in London. Her directing and teaching work is extensive in London and South Africa. Ruth is currently preparing to exhibit a performance art piece for the Spier Contemporary exhibition and has been selected for the new collaborations season for the Spier Summer Festival in Feb/March 2008. Ruth is the artistic director of Robust Physical Theatre Company.

Ruth offers private bodywork/creativity sessions which focus on releasing blocks in the body and strengthening the body and creative self through play.

ruth@robustphysicaltheatre.co.za Tel: 084 2687388

www.robustphysicaltheatre.co.za



MONIKA ROESE

ABOUT THE ARTIST:

Monika's style of painting is predominantly abstract, creating depth by using texture and warmth with the use of colour, with the aim of creating atmosphere in any space. Her style is differentiated by the strategic use of geometric form representing modern society and the abstract texture representing earth and nature and their contradiction in existence



FURNACE 1,600x800 R 3,198.00

083 620 3094 021 447 2710 monikaroese@gmail.com



SEASONS 1,600x800 R 3,940.00



STREETSCAPE 200x200 R 620.00 (Set of 3)



TRANQUIL MOOD 500x500 (Set of 3)



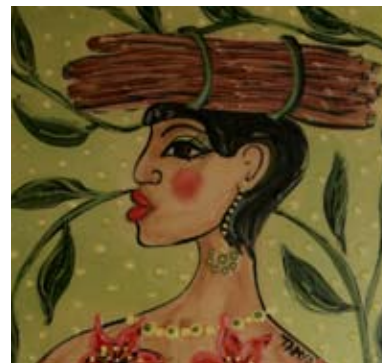
DEVELOPMENT 1,300x900 R 4,210.00

TANYA NOCKLER-GOLDING

Tanya is an attorney by profession, and has been a full-time artist since January 2007. Her prolific work is quirky and joyous, with a focus on decoratively painted ceramics. She specialises in voluptuous and ornate feminine ceramic Teapots, infused with character and passion.

The vessels are made in collaboration with ceramic artisans, creating work for African craftsmen and women in the Western Cape region.

Each unique and hand-painted Teapot is both functional and decorative. Her name and own story is explained on a handwritten tag attached to her. Everyone who enjoys the ritual of tea drinking, falls in love with a specific Teapot.



mobile 082 375 3830 tanya@ois.co.za
Brandon@ois.co.za www.teapots.co.za

TAMSIN RELLY

'Practising as a visual artist since 1999, my work evolves through constant experimentation, travel and regular participation in short courses, workshops and exhibitions. I work in various traditional and new media, including painting, drawing and photography. I am studying art history part time through UNISA and am currently based in Cape Town.

Interested in adventure and engaging people through creative play, recent projects have included a series of social interventions which explore creating art work interactively with public in different contexts in South Africa. 'Guerrilla studio' 2006 took place in Vida E Caffè in Greenpoint (www.multimediations.org/tamsin) and 'Interface' 2007 was held at Guga S'thebe in Langa as part of X-Cape (www.multimediations.org/interface).

www.tamsinrelly.com Cel: 082 923 3950

