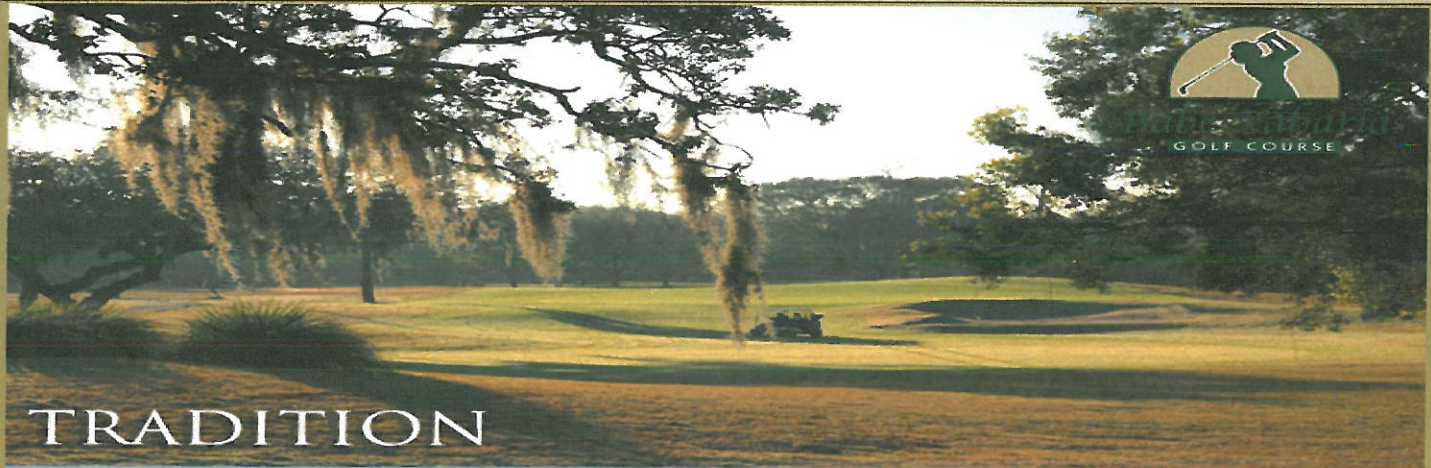


**TAMPA SPORTS AUTHORITY
GOLF COURSE BUDGET
FY 2011 - 2012**



GOLF COURSE

TRADITION



ADVENTURE



Rogers Park
Golf Course

TRANQUILITY

**TAMPA SPORTS AUTHORITY
GOLF COURSE BUDGET
FY 2011-2012**

TABLE OF CONTENTS

SECTION I – GOLF COURSE ADMINISTRATION

EXECUTIVE DIRECTORS’S REPORT – RJS	1-3
MISSION STATEMENT	4
TSA BOARD OF DIRECTORS	5
GOLF COURSE ORGANIZATIONAL CHART	6

SECTION II – BUDGET REQUEST

COMPARATIVE STATEMENT OF REVENUES & EXPENSES	7
FY 2012 CAPITAL PROJECTS	8
GRAPHS	
• TOTAL REVENUE COMPARISON	9
• GENERAL ADMINISTRATION EXPENSE COMPARISON	10
• CLUBHOUSE EXPENSE COMPARISON	11
• COURSE MAINTENANCE EXPENSE COMPARISON	12
• PAID PLAYERS COMPARISON	13

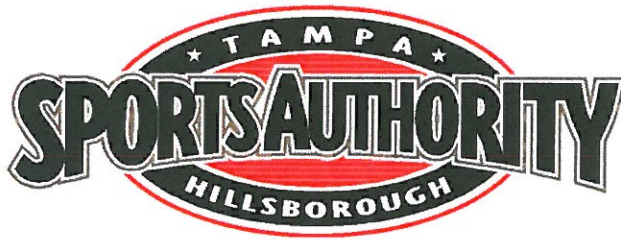
SECTION III – MEMBERSHIPS

TRADITION MEMBERSHIP PLAN INFORMATION	14
TRADITION GOLF MEMBERSHIP PLAN APPLICATION	15
TSA DISCOUNT GOLF CARD 2011	16

SECTION IV – COMPETITIVE RATES

COMPETITIVE SURVEY – SEASON - WEEKDAY	17
COMPETITIVE SURVEY – SEASON - WEEKEND	18
COMPETITIVE SURVEY – NON-SEASON - WEEKDAY	19
COMPETITIVE SURVEY – NON-SEASON – WEEKEND	20

SECTION I - GOLF COURSE ADMINISTRATION



Eric D. Hart
Executive Director

Executive Director's Municipal Golf Course Budget Report

Introduction

I am pleased to present the recommended budget for the fiscal year 2012. This budget was developed with the involvement of staff members and included a full review by the Authority finance committee. With the ongoing downturn in the economy and the financial challenges at the City of Tampa, this budget was developed to reduce the TSA's overall financial reliance on the City. The contribution request for FY 2012 is a 21% decrease in our request from the previous year. The Authority has reduced over 81% of its work force over the past four (4) fiscal years and made significant modifications in operating and staffing policies to create these reductions in costs. The Authority management has created a business plan for the golf courses and a long range strategic plan for the overall Authority to assist us in reducing our operating contributions and finding creative ways to operate more like private enterprise.

About the Authority

The Tampa Sports Authority is an independent special district, created by the Florida Legislature in 1965, to construct and manage sports and recreational facilities in Hillsborough County. The Authority's vision is to provide economic development and enhance the quality of life through sports and recreation. The Authority has no taxing power, but rather acts as an enterprise fund utilizing user-fees to subsidize its operating costs. As a result, all of its major capital construction projects, from the original Tampa Stadium, Golf Courses, St. Pete Times Forum, George Steinbrenner Field and Raymond James Stadium have been accomplished by working closely with the approvals and financial support of Hillsborough County and the City of Tampa.

Babe Zaharias, Rogers Park and Rocky Point are municipal golf courses owned by the City of Tampa. The Authority has managed these courses since mid-1970 with the expressed mission of maintaining reasonably low prices for the benefit of the golfing public and welcomed approximately 104,600 golfers in FY 2011. Provided within this report is a survey of rates from several local public courses that shows the TSA offers some of the lowest green fee rates in the region.

Contribution Request

This year's anticipated operating and maintenance (O&M) expenses outlined in this document require the Authority to request a contribution of \$877,788 from the City for next year's contractual obligations. This contribution is based on an operational subsidy of \$330,550 and projected capital costs of \$547,237. The Authority has an existing Inter-local Agreement with the City of Tampa which states the City shall be responsible for any operating shortfalls realized by the courses. The Authority does not have an O&M Reserve Fund because of ongoing operating shortfalls over the past ten (10) years.

Revenues for FY 12 were developed from the following assumptions:

1. The Authority is experimenting with dynamic pricing where prices will be increased during high demand periods and reduced during low demand periods
2. Special events are projected to decrease in frequency from 2011 budget
3. Revenues are projected to decrease by \$49,639 from the 2011 budget but are projected to be \$66,874 higher than 2011 projected revenues (based on management's present projection for final revenues for 2011)
4. Increased membership revenues (membership program and TSA Card)
5. Increased tournament play due to new Business Development Director position
6. Development of a junior golf tournament series
7. Adverse weather revenue losses were incorporated throughout the budget in lieu of projecting a specific month where adverse weather will affect revenues

Expenses for FY 12 were developed from the following assumptions:

1. No annual cost of living increases
2. Modification of scheduling and overtime policies
3. No increase in Health care costs
4. 3% reduction in FRS contributions (employees to cover)
5. Operating Expenses are projected to decrease slightly in relationship to expenses in FY 11
6. Insurance costs have decreased based on City of Tampa placing property insurance on their policy (Authority provides General Liability insurance)
7. Depreciation is again included in the audited statements (Authority and City of Tampa have moved all property and equipment depreciation to the Authority financial statements)

The following schedule shows actual and projected contributions from the City of Tampa:

Description	Budget FY 010-11	Projected FY 10-11	Budget FY 11-12
Operating Revenues	\$3,184,124	\$3,067,606	\$3,134,480
Operating Expenses	\$3,571,239	\$3,486,317	\$3,464,503
Net from Operations	(\$387,115)	(\$418,711)	(\$330,550)
Capital Costs	\$343,241	\$343,241	\$547,237
Profit/(Loss) including capital	(\$730,356)	(\$761,952)	(\$877,787)
Additional Funding Needed		\$31,591	
Total City of Tampa Contribution	\$730,361	\$761,952	\$877,787

Budget Notes

1. Accrual Accounting: The Authority's golf course budget is presented on an accrual basis. Monthly financial statements along with budget documents are presented on a full accrual basis of accounting.
2. Total City of Tampa contribution: Contribution amount is a sum of the following numbers: present year operational losses, capital investments, actual losses from previous years.
3. Resolution of "Due To" amounts: The City of Tampa fully funds operations and maintenance (O&M) at the municipal golf courses. A "Due To" from the City of Tampa to the Authority developed starting in FY 2004 and was resolved in FY 2010. Since this budget note was of significant importance in the 2011 budget presentation, we have included this note to identify that this financial issue has been resolved between the City of Tampa and the Authority.
4. Depreciation: Depreciation has been reintroduced to the Authority audited financial statements. The Authority has worked with the City administration and Authority auditors to determine that depreciation expense for the course is better suited to be represented on the Authority's annual financial Audit. Depreciation is not included in any financial requests from the Authority to the City of Tampa since it is a non-cash occurrence within the financial statements. Depreciation will not be included in the monthly financial statement for ease of reading but will be included in the year end Audited financial statements.
5. Revenues: While revenues appear to decrease 3% in the budget sheet, this decreased in revenue is based on developing the budget based on actual financial projections in FY 11. The FY 12 budget reflects a slight increase in play over the FY 11 budget year.
6. Salaries. Wages include full-time, part-time and over-time estimates and corresponding benefits such as social security, retirement and health insurance. No cost of living or merit increases are budgeted for fiscal year 2012. .
7. Capital costs: Reimbursement for proposed capital costs is provided by the City of Tampa net of any operating surplus.
8. Income tax: The Authority is a governmental agency and therefore exempt from Federal and State income taxes under provisions of the Internal Revenue Code and the Florida Income Tax Code, respectively. There are no provisions for income taxes in the budget.

Mission Statement

To plan, develop, promote and maintain a comprehensive complex of sports and recreation facilities of the use and enjoyment of the citizens of Tampa and Hillsborough County.

Our Role

To facilitate the construction and operations of needed user-fee supported sports and recreational facilities. To encourage and not compete with the private sector. “User-fee supported” distinguishes us from a Parks and Recreation Department.

Vision Statement

To provide economic development and enhance the quality of life through sports and recreation.

TAMPA SPORTS AUTHORITY

BOARD OF DIRECTORS

Frank DeBose
Chairman



Appointed 7/05
by the Mayor
Term Expires: 6-30-13

Tony Muniz
Vice-Chairman



Appointed 6/07
by the BOCC
Term Expires: 6-30-15

Randy Larson
Secretary-Treasurer



Appointed 6/09
by the BOCC
Term Expires: 6-30-13

Mary Alvarez



Appointed 6/08
by the Mayor
Term Expires: 6-30-11

Kalyn Brandewie



Appointed 7/03
by the Mayor
Term Expires: 6-30-11

Don DeFosset



Appointed 8/11
by the Governor
Term Expires: 7-1-13

Ken Hagan



Appointed 11/10
by the BOCC
Ex-Efficio

Dana Ludwig



Appointed 8/09
by the Mayor
Term Expires: 6-30-13

Vincent Marchetti



Appointed 8/01
by the BOCC
Term Expires: 6-30-13

Frank Reddick



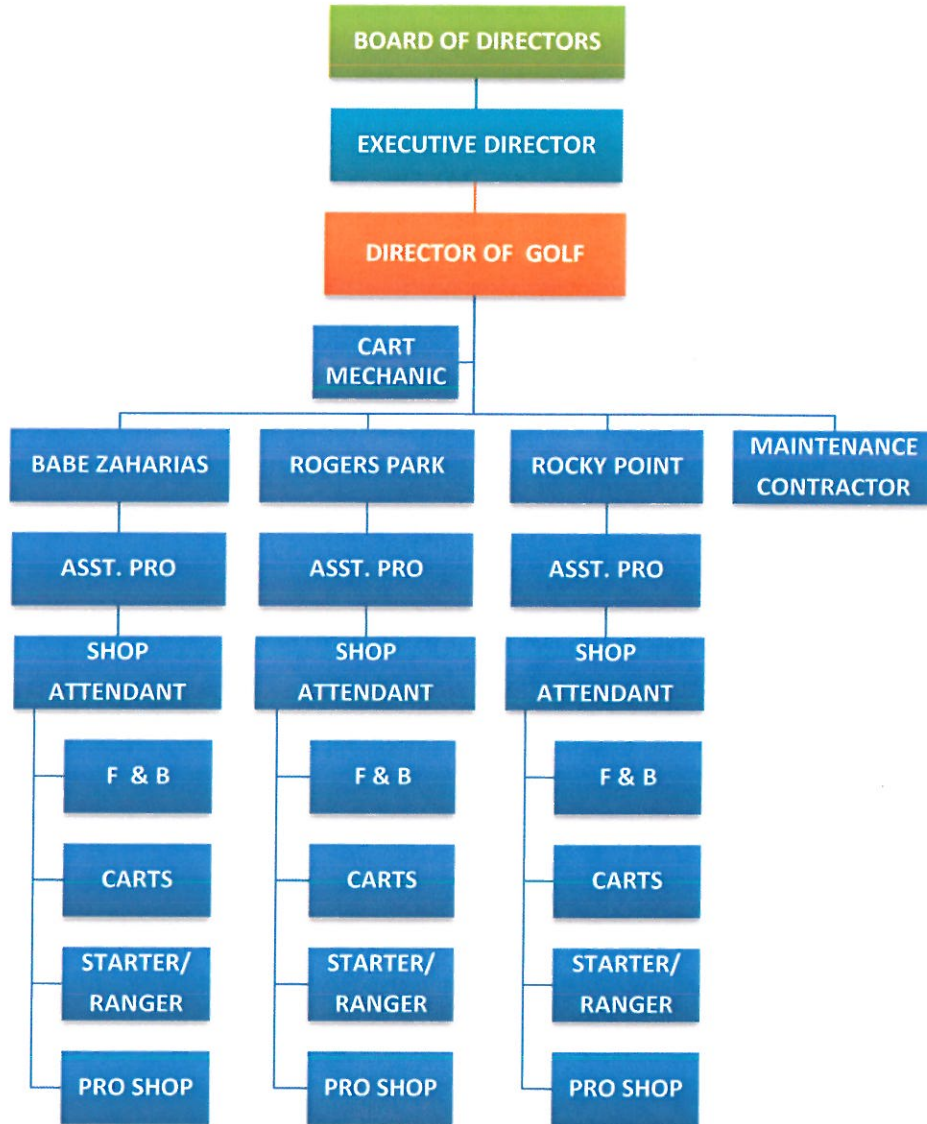
Appointed 4/11
by COUNCIL
Ex-Officio

Andrew Scaglione



Appointed 6/07
by the BOCC
Term Expires: 6-30-15

ORGANIZATIONAL CHART



SECTION II – BUDGET REQUEST

Tampa Sports Authority GOLF COURSE OPERATIONS COMPONENT UNIT COMBINING STATEMENT OF REVENUE AND EXPENSES Prepared on a Cash Basis																			
	BARRI ZAMBARIN				BOCKY TOPT				FOXFEST PARK				TOTALS BY FISCAL YEAR						
	2009 ACTUAL	2008 ACTUAL	2007 BUDGET	2006 ACTUAL	2009 ACTUAL	2008 ACTUAL	2007 BUDGET	2006 ACTUAL	2009 ACTUAL	2008 ACTUAL	2007 BUDGET	2006 ACTUAL	2009 ACTUAL	2008 ACTUAL	2007 BUDGET	2006 ACTUAL			
Operating Revenue																			
Golf fees	917,217	793,315	807,723	616,661	821,126	724,235	904,772	925,806	4,576,560	666,698	609,959	585,599	604,321	2,641,029	2,451,000	2,309,032	2,359,247		
Mechanics	60,209	429,676	61,157	47,554	11,426	68,426	74,235	72,569	349,112	49,050	59,870	48,613	47,610	243,052	176,224	177,999	166,640		
Food & beverage	150,792	129,075	142,466	136,437	133,332	109,616	121,358	123,231	330,221	122,759	161,230	183,234	129,171	539,223	405,639	396,855	411,859		
Memberships	9,775	0	9,667	25,000	25,000	21,591	34,865	15,188	1,356	2,906	14,058	15,664	62,743	67,413	46,217	49,941	67,984		
Driving range	0	0	0	0	0	58,237	59,733	60,580	294,492	5,509	62,052	66,166	67,909	266,239	121,133	125,889	128,280		
Total operating revenues	1,137,993	973,617	1,107,948	1,027,912	1,027,912	1,225,679	1,207,720	1,241,921	6,052,532	944,400	740,548	851,400	854,916	4,107,356	3,164,124	3,067,606	3,134,440		
Operating Revenues Percentage Increase (Decrease) from Prior Year	9%	-14%	13%	5%	0%	8%	6%	3%	-13%	-17%	-17%	15%	12%	-1%	-13%	-8%	2%		
Operating Expenses																			
Cost of merchandise sold	49,337	32,123	48,539	36,552	33,952	56,214	37,529	59,505	23,077	76,007	35,304	40,027	24,821	176,593	112,035	113,727	106,763		
Cost of food & beverage	48,631	40,252	46,147	45,210	47,063	45,649	47,924	50,816	232,690	46,129	44,017	46,231	45,727	233,732	141,019	116,016	141,506		
Clubhouse expenses	4,006	4,006	4,006	4,006	4,006	4,006	4,006	4,006	4,006	4,006	4,006	4,006	4,006	4,006	4,006	4,006	4,006		
Course maintenance	555,096	524,005	534,744	520,791	533,002	432,273	400,294	340,334	2,017,246	517,034	429,354	333,234	356,646	2,447,099	1,215,332	1,071,632	1,180,632		
General and administrative	131,037	134,064	171,501	169,600	170,295	196,613	192,520	184,433	989,203	139,545	209,306	193,265	192,201	966,451	696,735	559,632	532,062		
Total operating expenses	1,230,356	1,148,635	1,126,546	1,094,062	1,120,418	1,370,920	1,197,234	1,300,045	6,377,315	1,352,744	1,274,266	1,306,328	1,432,610	6,157,521	3,962,361	3,520,699	3,464,408		
Operating Expenses Percentage Increase (Decrease) from Prior Year	-20%	-10%	-2%	-15%	2%	-1%	-8%	0%	-23%	-20%	-5%	-5%	-4%	-3%	-15%	-6%	-6%		
Non-operating revenues (expenses)	(1,570)	(17,943)	(99)	(93)	(99)	(339)	(331)	(339)	(30,517)	(5,111)	(13,661)	(102)	(90)	(21,171)	(9,345)	(66,646)	(53,949)		
Operating & Nonoperating Loss Before Grants and Contributions	(144,803)	(189,964)	(19,600)	(66,212)	(93,346)	(12,840)	(6,164)	(41,577)	(254,820)	(446,365)	(852,884)	(355,033)	(275,784)	(1,991,136)	(690,802)	(932,391)	(827,115)	(630,551)	
Operating contributions	154,824	579,794	19,600	4,235	0	12,434	54,584	0	866,929	297,569	762,333	355,031	284,251	1,699,134	693,500	1,900,692	3,571,115	3,571,120	
DROP (Potential Financial Impact)	0	0	0	0	0	0	0	0	0	0	0	0	0	0	0	0	0		
Operating Loss After DROP, Grants and Contributions	10,331	389,830	(17,927)	(93,346)	288,889	141,163	368,921	0	612,408	(146,796)	209,749	0	(74,411)	(275,784)	2,698	968,501	0	(31,590)	
Loss/Gain Percentage After Contributions By Golf Course By Fiscal Year Totals	21%	20%	5%	16%	28%	3%	-1%	-12.28%	0%	65%	59%	92%	84%	0%	100%	100%	100%	100%	
FY 2010 Auditor Adjustments to Asset Base resulting to City of Tampa Asset Base	821,174	0	0	0	0	577,940	577,940	577,940	0	6,838,872	0	0	0	6,838,872	2,014,916	0	0		
Capital Expenditures Funded by City of Tampa see attached capital purchase schedule fiscal year 2012	7,107	95,690	104,709	174,403	174,403	131,481	151,481	211,533	663,857	27,191	33,267	107,052	161,295	483,457	121,999	276,919	348,241	343,241	547,237

Capital Projects FY 12

ROCKY POINT	Estimate	ROGERS PARK	Estimate	BABE ZAHARIAS	Estimate
Clubhouse Roof	32,000.00	Roof Maintenance	7,865.00	Cart Building Improvements	21,265.00
Paint Clubhouse	3,150.00	Window Tint*	4,000.00	Clubhouse Carpet	5,167.00
Cart Barn Paint	1,980.00	Cart Barn Paint	2,180.00	Bathroom Renovation	7,980.00
Repair Maint Building*	10,000.00	Parking Lot	5,718.00	Repair Maint Building	20,060.00
Paint Maint Building	1,500.00	Landscape Front Entrance	42,000.00	Coquina Shell	4,000.00
Pro Shop renovation	11,000.00	Pro Shop Renovation	4,800.00	Pro Shop Renovation	6,000.00
Wash/Load Station construction*	10,000.00	Coquina Shell	4,000.00	Entrance Doors*	5,000.00
Course Improvements	18,000.00	Course Improvements	20,000.00	Course Improvements	20,000.00
1/4 Cart Path Improvements	27,211.00			Cart paths	5,839.00
Golf Course Bathroom Renovation	3,365.00			Golf Course Bathroom Renovation	3,365.00
				Sand Bin *	5,000.00
Capital Lease Carts	57,787.40	Capital Lease Carts	49,532.40	Capital Lease Carts	49,532.40
Capital Lease Maint	13,339.80				
Contingency Projects	10,000.00	Contingency Projects	10,000.00	Contingency Projects	10,000.00
Computer	1,000.00	Computer	1,000.00	Computer	1,000.00
Kitchen Equipment	2,500.00	Kitchen Equipment	2,500.00	Kitchen Equipment	2,500.00
Pumps	2,500.00	Pumps	2,500.00	Pumps	2,500.00
Driving Range Netting	1,000.00				
Security Camera System	5,200.00	Security Camera System	5,200.00	Security Camera System	5,200.00
	211,533.20		161,295.40		174,408.40
					547,237.00

* Estimate not yet confirmed

Contractually Bound
Contingency Funds
Deferred from FY11

TAMPA SPORTS AUTHORITY GOLF COURSES

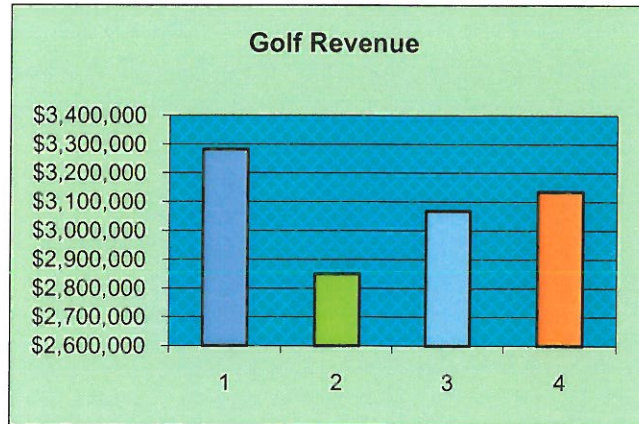
Total Revenue Comparison

FY 2011-2012

Year 1 FY08-09	Year 2 FY09-10	Year 3 FY10-11 Projected	Year 4 FY11-12 Budgeted
-------------------	-------------------	--------------------------------	-------------------------------

**Total
Revenue**

\$3,281,406 \$2,850,252 \$3,067,606 \$3,134,480



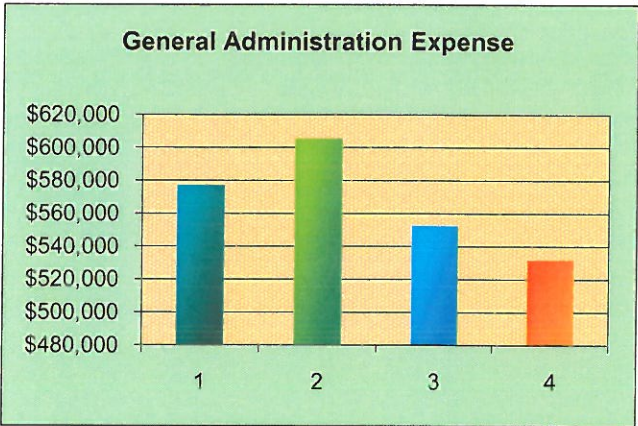
TAMPA SPORTS AUTHORITY GOLF COURSES

General Administration Expense Comparison

FY 2011-2012

Year 1	Year 2	Year 3	Year 4
FY08-09	FY09-10	FY10-11	FY11-12
		Projected	Budgeted

Total				
General				
Administration	\$577,282	\$605,735	\$552,639	\$532,062



TAMPA SPORTS AUTHORITY GOLF COURSES

Clubhouse Expense Comparison

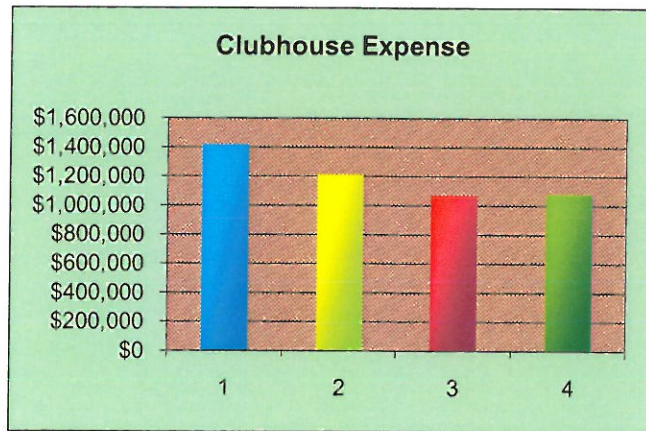
FY 2011-2012

Year 1 FY08-09	Year 2 FY09-10	Year 3 FY10-11 Projected	Year 4 FY11-12 Budgeted
-------------------	-------------------	--------------------------------	-------------------------------

Total

Clubhouse

\$1,418,012 \$1,213,432 \$1,071,635 \$1,081,162



TAMPA SPORTS AUTHORITY GOLF COURSES
Course Maintenance Expense Comparison
FY 2011-2012

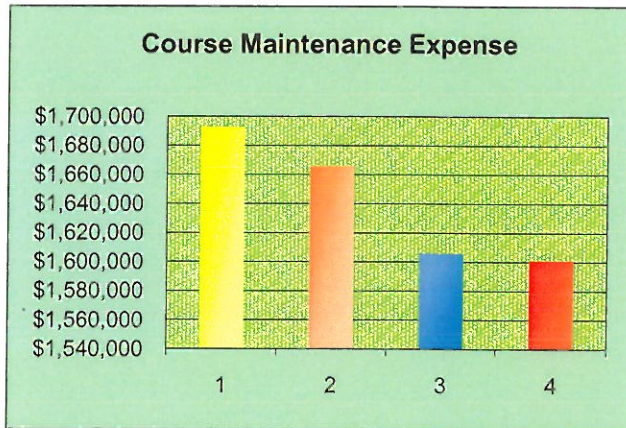
Year 1	Year 2	Year 3	Year 4
FY08-09	FY09-10	FY10-11	FY11-12
		Projected	Budgeted

Total

Course

Maintenance

\$1,692,791 \$1,665,953 \$1,605,935 \$1,601,007

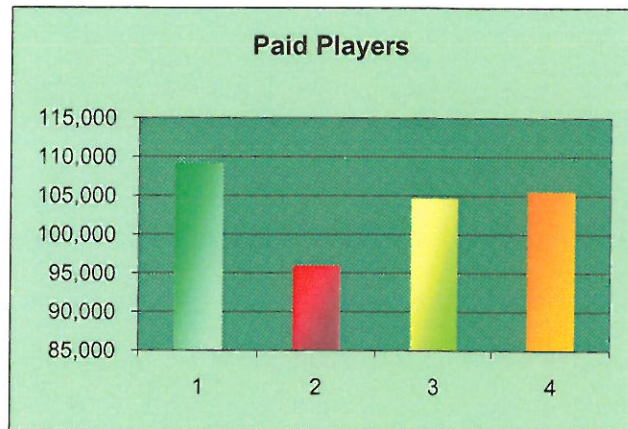


TAMPA SPORTS AUTHORITY GOLF COURSES

Paid Players Comparison

FY 2011-2012

	Year 1 FY08-09	Year 2 FY09-10	Year 3 FY10-11 Projected	Year 4 FY11-12 Budgeted
Babe Zaharias	39,510	35,538	36,761	38,601
Rogers Park	28,990	22,670	27,953	26,081
Rocky Point	40,613	37,776	39,973	40,849
Total Paid Players	109,113	95,984	104,687	105,531



SECTION III - MEMBERSHIP



Tradition Membership Plan Information

Membership in the Tradition Membership Plan provides prepaid golf privileges at all (3) Tampa Sports Authority Golf Courses (Babe Zaharias, Rocky Point and Rogers Park). Membership includes walking privileges or ½ cart at the special rate of \$12.00 for 18 holes, \$7.00 for 9 holes or \$10 for twilight. This membership is valid for one year from date of purchase.

Membership Fee Information

- Monthly membership fees (non refundable) applicable under this plan as outlined:
 - **Single membership** (7 days playing privileges) **\$69.00** per month
 - **Family membership** (Husband & Wife, 7 days playing privileges) **\$89.00** per month
 - **Dependent Children under the age of 14 free** (Added under the Family Membership) **\$25.00** for each dependant between the ages of 15-18, per month.
- Monthly membership fees are due by the 1st of every month and charged to your credit card number on file. **Cash and checks will not be accepted**
- If an account goes unpaid for 20 days, the membership will be voided. An application fee Of **\$100.00** will then be required
- There will be no pro-ration of member fees
- Members are not allowed to suspend their membership, for any period of time during the length of this contract

Tradition Membership Policies and Procedures

- The Tradition Membership privileges are granted solely at the discretion of the Tampa Sports Authority (TSA). Sales of these memberships can be limited as TSA deems appropriate. TSA reserves the right to cancel the Tradition Membership Plan and this agreement at the end of one year
- All operations of the facilities and all policies of the Golf Course will be established and regulated by the TSA
- The Tradition Membership Plan will be awarded upon receipt of all fees and monthly dues
- Each member must check in at pro-shop and starter prior to play
- Dependent Children must have a full driver's license to operate golf carts
- A cap on the number of memberships can and may be established by the TSA
- TSA will establish all initiation fees, monthly and cart fees as deemed appropriate
- Membership privileges are restricted to normal hours of operations
- TSA has the right to restrict play on certain days and times for special use (including but not limited to tournaments, special events and maintenance of courses and practice areas)
- All members are subject to the rules, regulations and policies established by the TSA. Violation could result in suspension or revocation of membership without refund

Initial_____



Official Use Only
Membership Numbers

Tradition Golf Membership Plan Application

(Please Print)

Name: _____
Last First Middle

Address: _____
Street Address City state Zip

Email Address: _____

Home Phone: _____ Cell Phone: _____

____ I wish to purchase the Tradition Membership Plan

____ Single Membership \$69.00 + tax ____ Family Membership (2) \$89.00 + tax Dependents # ____ @ \$25.00 + tax

Tradition Membership Plan:

- Provides prepaid golf privileges at Rogers Park GC, Rocky Point GC and Babe Zaharias GC
- Walking privileges
- Members ½ cart fee rate (18 holes - \$12.00, 9 holes - \$7.00)

The following persons are to be included under my Tradition Membership Plan:

Name _____

Name _____

Name _____

Name _____

I have read the attached fact sheet concerning membership on the above plans. I agree to abide by all rules and regulations of the Tampa Sports Authority Golf Courses.

Signature: _____ Date _____

TSA Discount Golf Card 2011

Enjoy up to 25% savings on every round of golf at Babe Zaharias, Rogers Park and Rocky Point golf courses.

- TSA Discount Golf Cards are offered for purchase and are usable for unlimited play for one year of date of purchase
- A special card purchase discount will be offered for residents of the City of Tampa. Proof of residency is required at the time of purchase
- A special green fee discount is offered to seniors over the age of 55. Proof of age is required at the time of purchase
- All card rates as well as green fees associated with the card are determined and can be changed at any time by the TSA
- Green fees for the day is included the day of the card purchase
- Junior golfer is defined as a high school student (or younger)

TSA Discount Golf Card Rates 2010

City of Tampa Resident - \$60 Family (2) - \$90

Non Resident - \$70 Family (2) - \$100

Junior dependant – N/C

Junior - \$25

Free round of golf with purchase of card

TSA Discount Golf Card 2011

Name (s) : _____

Address : _____

City: _____ **Zip Code:** _ _ _ _ _

Phone: ___ - ___ - _____ **Renewal:** Y ___ N ___

E-Mail: _____

***The information above is correct and I agree to abide by the rules and policies of the Tampa Sports Authority.**

Customer's Signature

Staff Signature

SECTION IV – COMPETITIVE RATES

**GOLF OPERATIONS
COMPETITIVE SURVEY
SEASON - WEEKDAY**

COURSE	COUNTY	AM	PM	Twight	WALK
Westchase	Hills.	84.00	52.00/32.00	25.00	NO
Summerfield	Hills	41.00	31.00	22.00	NO
Heritage Harbor	Hills.	35.00	30.00	18.00	NO
Heritage Isle	Hills.	29.00	27.00	27.00	NO
Apollo Bch Golf & Sea	Hills	40.00	35.00	25.00	YES
Northdale	Hills.	34.99	29.99	19.99	YES
Bloomington	Hills	38.00	28.00	21.00	NO
Pebble Creek	Hills.	34.00	29.00	22.00	NO
Mangrove Bay	Pinellas	43.00	28.00	28.00	YES
Chi Chi Rodriguez	Pinellas	34.99	29.99	19.99	NO
Tarpon Springs	Pinellas	40.00/37.00	28.00	22.00	NO
Silver Dollar	Hills.	34.00	23.00	23.00	NO
Walden Lakes Lakes	Hills.	40.00	34.00	30.00	NO
Walden Lakes Hills	Hills	34.00	28.00	24.00	NO
Scotland Yards	Pasco	30.00	25.00	20.00	NO
Airco	Pinellas	38.50	35.00	28.00	NO
USF	Hills.	30.00	26.00	19.00	YES
Plantation Palms	Paso	35.00	29.95	29.95	NO
Rocky Point Regular	Hills.	33.00	27.00	22.00	YES
Babe Zaharias Regular	Hills.	33.00	27.00	22.00	YES
Rogers Park Regular	Hills.	33.00	27.00	22.00	YES
Rocky Point Card	Hills.	25.00	24.00	19.00	YES
Rogers Park Card	Hills.	25.00	24.00	19.00	YES
Babe Zaharias Card	Hills.	25.00	24.00	19.00	YES
Rocky Point Senior	Hills.	24.00	23.00	18.00	YES
Babe Zaharias Senior	Hills.	24.00	23.00	18.00	YES
Rogers Park Senior	Hills.	24.00	23.00	18.00	YES

January 24, 2010

**GOLF OPERATIONS
COMPETITIVE SURVEY
SEASON - WEEKEND**

COURSE	COUNTY	AM	PM	Twilight	WALK
Westchase	Hills.	94.00	52.00/32.00	25.00	NO
Summerfield	Hills	48.00	35.00	24.00	NO
Heritage Harbor	Hills.	35.00	35.00	18.00	NO
Heritage Isle	Hills.	33.00	33.00	30.00	NO
Apollo Bch Golf & Sea	Hills	40.00	35.00	25.00	YES
Northdale	Hills.	39.99	32.99	19.99	YES
Bloomingtondale	Hills	46.00	33.00	23.00	NO
Pebble Creek	Hills	42.00	32.00	22.00	NO
Mangrove Bay	Pinellas	43.00	43.00	28.00	YES
Chi Chi Rodriquez	Pinellas	34.00	29.99	19.99	NO
Tarpon Springs	Pinellas	40.00/37.00	28.00	22.00	NO
Silver Dollar	Hills.	34.00	34.00	23.00	NO
Walden Lakes- Lakes	Hills.	45.00	36.00	32.00	NO
Walden Lakes- Hills	Hills.	38.00	30.00	26.00	NO
Scotland Yards	Pasco	30.00	25.00	20.00	NO
Airco	Pinellas	38.50	35.00	28.00	NO
USF	Hills.	39.00	32.00	19.00	YES
Plantation Plams	Pasco	45.00	45.00	29.95	NO
Rocky Point Regular	Hills.	37.00	30.00	22.00	YES
Babe Zaharias Regular	Hills.	37.00	30.00	22.00	YES
Rogers Park Regular	Hills.	37.00	30.00	22.00	YES
Rocky Point Card	Hills.	30.00	27.00	19.00	YES
Rogers Park Card	Hills.	30.00	27.00	19.00	YES
Babe Zaharias Card	Hills.	30.00	27.00	19.00	YES
Rocky Point Senior	Hills.	28.00	25.00	18.00	YES
Babe Zaharias Senior	Hills.	28.00	25.00	18.00	YES
Rogers Park Senior	Hills.	28.00	25.00	18.00	YES

January 24, 2011

**GOLF OPERATIONS
COMPETITIVE SURVEY
NON SEASON - WEEKDAY**

COURSE	COUNTY	AM	PM	Twilight	WALK
Silver Dollar	Hills.	20.00	17.00	12.50	NO
Northdale	Hills.	26.00	21.00	17.00	YES
Scotland Yards	Pasco	27.00	22.00	20.00	NO
Chi Chi Rodriquez	Pinellas	28.00	22.00	15.00	NO
Heritage Isle	Hills.	29.00	25.00	22.00	NO
Tarpon Springs	Pinellas	29.00 /27.00	23.00	18.00	NO
Heritage Harbor	Hills.	30.00	27.00	18.00	NO
Mangrove Bay	Pinellas	30.00	23.50	23.50	YES
USF	Hills.	30.00	26.00	19.00	YES
Pebble Creek	Hills.	34.00	29.00	29.00	NO
Walden Lakes Hills	Hills	34.00	28.00	24.00	NO
Apollo Bch Golf & Sea	Hills	35.00	25.00	25.00	YES
Plantation Palms	Paso	35.00	27.00	27.00	NO
Summerfield	Hills	36.00	27.00	22.00	NO
Bloomingle	Hills	38.00	28.00	21.00 /19.00	NO
Walden Lakes	Hills.	40.00	34.00	30.00	NO
Westchase	Hills.	59.00 /49.00	31.00	21.00	NO
Rocky Point Regular	Hills.	26.00	22.00	22.00	YES
Babe Zaharias Regular	Hills.	26.00	22.00	22.00	YES
Rogers Park Regular	Hills.	26.00	22.00	22.00	YES
Rocky Point Card	Hills.	21.00	17.00	17.00	YES
Rogers Park Card	Hills.	21.00	17.00	17.00	YES
Babe Zaharias Card	Hills.	21.00	17.00	17.00	YES
Rocky Point Senior	Hills.	19.00	17.00	17.00	YES
Babe Zaharias Senior	Hills.	19.00	17.00	17.00	YES
Rogers Park Senior	Hills.	19.00	17.00	17.00	YES

May 31, 2011

**GOLF OPERATIONS
COMPETITIVE SURVEY
NON SEASON - WEEKEND**

COURSE	COUNTY	AM	PM	Twilight	WALK
Silver Dollar	Hills.	20.00	17.00	12.50	NO
Scotland Yards	Pasco	27.00	22.00	20.00	NO
Tarpon Springs	Pinellas	29.00 /26.00	23.00	18.00	NO
Mangrove Bay	Pinellas	30.00	23.50	23.50	YES
Chi Chi Rodriquez	Pinellas	32.00	22.00	15.00	NO
Northdale	Hills.	33.00	25.00	17.00	YES
Heritage Harbor	Hills.	35.00	30.00	18.00	NO
Apollo Bch Golf & Sea	Hills	35.00	25.00	25.00	YES
Walden Lakes- Hills	Hills.	38.00	30.00	26.00	NO
Pebble Creek	Hills	39.00	32.00	32.00	NO
USF	Hills.	39.00	30.00	19.00	YES
Heritage Isle	Hills.	39.75	35.00	24.00	NO
Summerfield	Hills	44.00	31.00	24.00	NO
Walden Lakes- Lakes	Hills.	45.00	36.00	32.00	NO
Plantation Plams	Pasco	45.00	27.00	27.00	NO
Bloomingleale	Hills	46.00	33.00	23.00 21.00	NO
Westchase	Hills.	59.00 /49.00	31.00	21.00	NO
Rocky Point Regular	Hills.	39.00	27.00	22.00	YES
Babe Zaharias Regular	Hills.	39.00	27.00	22.00	YES
Rogers Park Regular	Hills.	39.00	27.00	22.00	YES
Rocky Point Card	Hills.	29.00	21.00	17.00	YES
Rogers Park Card	Hills.	29.00	21.00	17.00	YES
Babe Zaharias Card	Hills.	29.00	21.00	17.00	YES
Rocky Point Senior	Hills.	28.00	19.00	17.00	YES
Babe Zaharias Senior	Hills.	28.00	19.00	17.00	YES
Rogers Park Senior	Hills.	28.00	19.00	17.00	YES

May 31, 2011