



# ANNUAL BUDGET FY 2012-2013



BABE ZAHARIAS GOLF COURSE



ROCKY POINT GOLF COURSE



ROGERS PARK GOLF COURSE

**TAMPA SPORTS AUTHORITY  
GOLF COURSE BUDGET  
FY 2012-2013**

**TABLE OF CONTENTS**

**SECTION I – GOLF COURSE ADMINISTRATION**

---

EXECUTIVE DIRECTORS’S REPORT – RJS	1-4
MISSION STATEMENT	5
TSA BOARD OF DIRECTORS	6
GOLF COURSE ORGANIZATIONAL CHART	7

**SECTION II – BUDGET REQUEST**

---

COMPARATIVE STATEMENT OF REVENUES & EXPENSES	8
FY 2013 CAPITAL PROJECTS	9
GRAPHS	
• TOTAL REVENUE COMPARISON	10
• GENERAL ADMINISTRATION EXPENSE COMPARISON	11
• CLUBHOUSE EXPENSE COMPARISON	12
• COURSE MAINTENANCE EXPENSE COMPARISON	13
• PAID PLAYERS COMPARISON	14

**SECTION III – MEMBERSHIPS**

---

TRADITION MEMBERSHIP PLAN INFORMATION	15
TRADITION GOLF MEMBERSHIP PLAN APPLICATION	16
TSA DISCOUNT GOLF CARD	17

**SECTION IV – COMPETITIVE RATES**

---

COMPETITIVE SURVEY – SEASON - WEEKDAY	18
COMPETITIVE SURVEY – SEASON - WEEKEND	19
COMPETITIVE SURVEY – NON-SEASON - WEEKDAY	20
COMPETITIVE SURVEY – NON-SEASON – WEEKEND	21

# **SECTION I - GOLF COURSE ADMINISTRATION**



## **Executive Director's Municipal Golf Course Budget Report**

### **Introduction**

I am pleased to present the recommended budget for the fiscal year 2013. This budget was developed with the involvement of staff members and included a full review by the Authority finance committee. As with the previous two budget years, the Authority continues to place an emphasis on capital improvements at the courses and this budget reflects this philosophy. Due to the ongoing downturn in the economy and the financial challenges at the City of Tampa, this budget was developed to continue to improve the overall facilities and conditions at the course while continuing to reduce the annual operating contribution from the City of Tampa. The Authority is projecting the golf operations will perform significantly better than the FY 12 approved budget. This improvement is due to the introduction of the 24 hour reservation system, ongoing improvements at the courses along with preferable weather conditions during this years peak season.

Eric D. Hart  
President/CEO

The Authority continues to evaluate the organization and cost related to the reorganization of the staff is included within this budget. The Authority has worked closely with the Hillsborough County Civil Service Board and the Hillsborough County Human Resources Department to assist in these reorganization efforts. The Authority has reduced over 81% of its work force over the past five (5) fiscal years and made significant modifications in operating and staffing policies to create these reductions in costs. The Authority management continues to update the business plan for the golf courses to adapt to changes within the operating environment to continue to operate more like private enterprise.

### **About the Authority**

The Tampa Sports Authority is an independent special district, created by the Florida Legislature in 1965, to construct and manage sports and recreational facilities in Hillsborough County. The Authority's vision is to provide economic development and enhance the quality of life through sports and recreation. The Authority has no taxing power, but rather acts as an enterprise fund utilizing user-fees to subsidize its operating costs. As a result, all of its major capital construction projects, from the original Tampa Stadium, Golf Courses, St. Pete Times Forum, George Steinbrenner Field and Raymond James Stadium have been accomplished by working closely with the approvals and financial support of Hillsborough County and the City of Tampa.

Babe Zaharias, Rogers Park and Rocky Point are municipal golf courses owned by the City of Tampa. The Authority has managed these courses since mid-1970 with the expressed mission of maintaining reasonably low prices for the benefit of the golfing public and will welcomed approximately 109,000 golfers in FY 2012. Provided within this report is a survey of rates from several local public courses that shows the TSA offers some of the lowest green fee rates in the region.

## **Contribution Request**

This year's anticipated operating and maintenance (O&M) expenses outlined in this document require the Authority to request a contribution of \$923,888 from the City for next year's contractual obligations. This contribution is based on an operational subsidy of \$326,411 and projected capital costs of \$597,477. The Authority has an existing Inter-local Agreement with the City of Tampa which states the City shall be responsible for any operating shortfalls realized by the courses. The Authority does not have an O&M Reserve Fund because of ongoing operating shortfalls over the past ten (10) years.

Revenues for FY 13 were developed from the following assumptions:

1. Adverse weather revenue losses were incorporated throughout the budget in lieu of projecting a specific month where adverse weather will affect revenues
2. No fee increases on the standard rates, we will continue to either reduce rates or increase rates during non-peak and peak timeframes to maximize revenues. We assumed no increased revenue based on the dynamic pricing.
3. During the traditional peak season we saw record warm temperatures and significantly low rainfall which resulted in an increase in rounds played. This windfall was not factored into this budget. The primary assumptions made in this budget are relatively flat when compared to FY 12 Budget.
4. Special event revenues are projected to remain as previous year.
5. Total FY13 revenues are projected to be \$87,595 greater than the 2011 Actual revenues and (\$9,745) less than 2012 projected revenues. During the 2012 fiscal year, revenues are projected to be greater than budget by \$34,229.
6. We are placing a cap on the Tradition Membership program at 200 memberships at the reduced price. If demand warrants, we will sell additional memberships at a higher price level. We anticipate a 21% increase in membership revenue over previous year.

Expenses for FY 13 were developed from the following assumptions:

1. Expenses are projected to increase by \$18,871 compared to the 2012 Budget. Outsourcing of maintenance, staff reductions and modification of operating procedures in FY 10 and 11 have stabilized our operational expenses. As our cart fleet goes into its third year, we anticipate a rise in upkeep as batteries, tires and parts begin to age.
2. A one-time, \$1,200 cost of living payment is included within this budget. No merit increases are included.
3. No increase in health insurance costs

4. FRS 3% employee contribution instituted on 7/1/2011 is currently in litigation. Should the ruling be upheld through the appeals process, these funds would be required to be repaid along with an unspecified interest amount. These potential costs have not been included within this budget.
5. Minimum wage is anticipated to increase by 3% effective January 1, 2013 and is included within this budget.
6. Depreciation is again included in the audited statements (Authority and City of Tampa have moved all property and equipment depreciation to the Authority financial statements)

The following schedule shows actual and projected contributions from the City of Tampa:

Description	Actual FY 10-11	Projected FY 11-12	Budget FY 12-13
Operating Revenues	\$3,071,369	\$3,168,709	\$3,158,964
Operating Expenses & Non Operating Expenses	\$3,463,146	\$3,360,827	\$3,485,374
<b>Net from Operations</b>	<b>(\$393,786)</b>	<b>(\$192,118)</b>	<b>(\$326,411)</b>
Capital Costs	\$342,171	\$547,237	\$597,477
<b>Profit/(Loss) including capital</b>	<b>(\$735,957)</b>	<b>(\$739,355)</b>	<b>(\$923,888)</b>
Additional Funding Needed	<b>(\$121,044)</b>	<b>(\$138,432)</b>	
<b>Total City of Tampa Contribution</b>	<b>\$857,001</b>	<b>\$877,787</b>	<b>\$923,888</b>

### **Budget Notes**

1. Accrual Accounting: The Authority's golf course budget is presented on an accrual basis. Monthly financial statements along with budget documents are presented on a full accrual basis of accounting.
2. Total City of Tampa contribution: Contribution amount is a sum of the following numbers: present year operational losses and capital investments.
3. Resolution of "Due To" amounts: The City of Tampa fully funds operations and maintenance (O&M) at the municipal golf courses. A "Due To" from the City of Tampa to the Authority developed starting in FY 2004 and was resolved in FY 2010. Since this budget note was of significant importance in the 2011 budget presentation, we have included

this note to identify that this financial issue has been resolved between the City of Tampa and the Authority.

4. Depreciation: Depreciation has been reintroduced to the Authority audited financial statements. The Authority has worked with the City administration and Authority auditors to determine that depreciation expense for the course is better suited to be represented on the Authority's annual financial Audit. Depreciation is not included in any financial requests from the Authority to the City of Tampa since it is a non-cash occurrence within the financial statements. Depreciation will not be included in the monthly financial statement for ease of reading but will be included in the year end Audited financial statements.
5. Salaries. Wages include full-time, part-time and over-time estimates and corresponding benefits such as social security, retirement and health insurance.
6. Capital costs: Reimbursement for proposed capital costs is provided by the City of Tampa net of any operating surplus.
7. Income tax: The Authority is a governmental agency and therefore exempt from Federal and State income taxes under provisions of the Internal Revenue Code and the Florida Income Tax Code, respectively. There are no provisions for income taxes in the budget.

## **Mission Statement**

To plan, develop, promote and maintain a comprehensive complex of sports and recreation facilities of the use and enjoyment of the citizens of Tampa and Hillsborough County.

## **Our Role**

To facilitate the construction and operations of needed user-fee supported sports and recreational facilities. To encourage and not compete with the private sector. “User-fee supported” distinguishes us from a Parks and Recreation Department.

## **Vision Statement**

To provide economic development and enhance the quality of life through sports and recreation.



# TAMPA SPORTS AUTHORITY

## BOARD OF DIRECTORS

**Tony Muniz**  
Chairman



Appointed 6/007  
by the BOCC  
Term Expires: 6-30-15

**Randy Larson**  
Vice-Chairman



Appointed 6/09  
by the BOCC  
Term Expires: 6-30-13

**Dana Ludwig**  
Secretary-Treasurer



Appointed 8/09  
by the Mayor  
Term Expires: 6-30-13

**Kalyn Brandewie**



Appointed 7/03  
by the Mayor  
Term Expires: 6-30-11

**Frank DeBose**



Appointed 7/03  
by the Mayor  
Term Expires: 6-30-13

**Don DeFosset**



Appointed 8/11  
by the Governor  
Term Expires: 7-1-13

**Ken Hagan**



Appointed 11/10  
by the BOCC  
Ex-Efficio

**Vincent Marchetti**



Appointed 8/01  
by the BOCC  
Term Expires: 6-30-13

**Frank Reddick**



Appointed 4/11  
by COUNCIL  
Ex-Officio

**Andrew Scaglione**



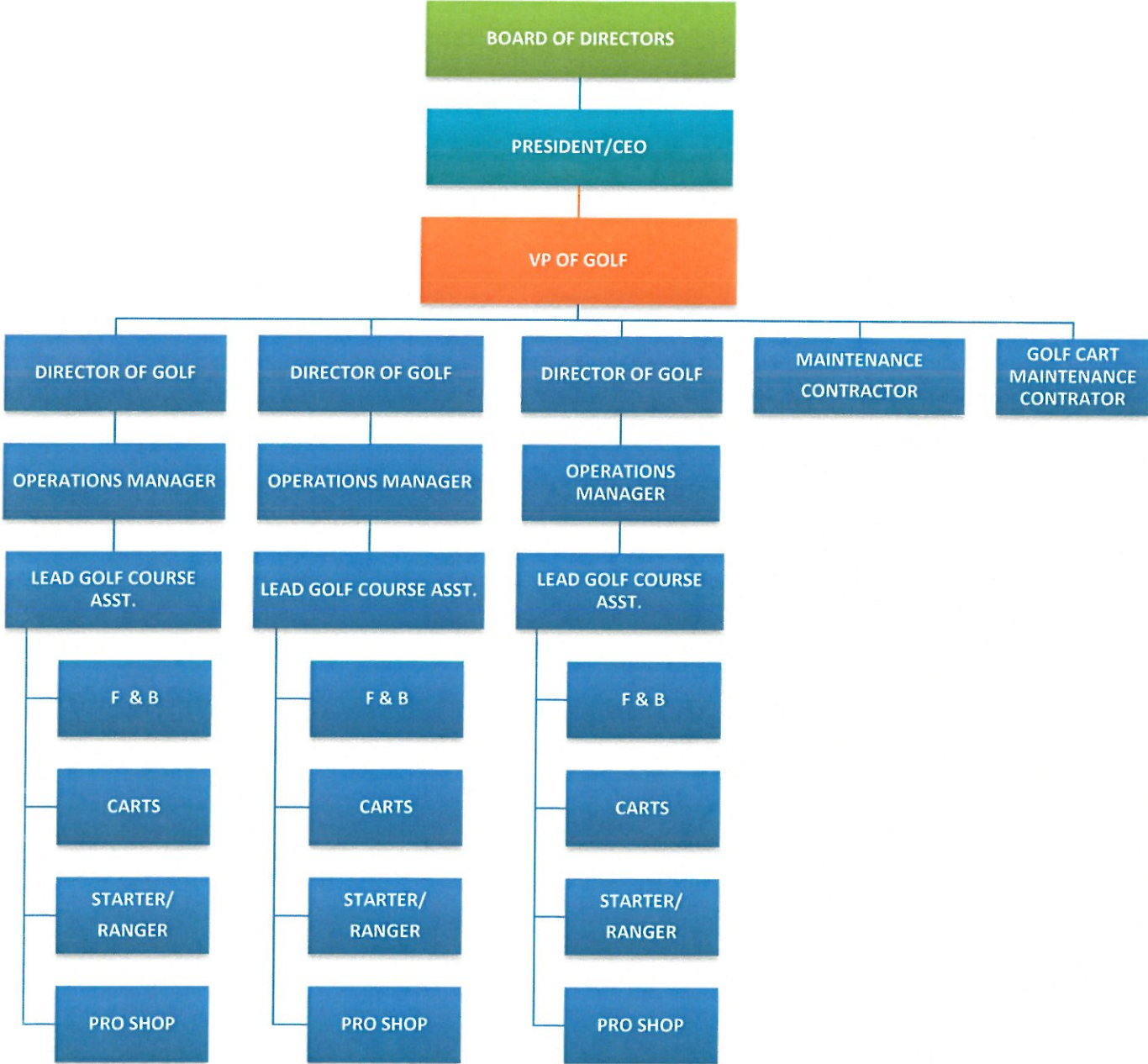
Appointed 6/07  
by BOCC  
Term Expires: 6-30-15

**Thomas Scott**



Appointed 6/11  
by the Mayor  
Term Expires: 6-30-15

# ORGANIZATIONAL CHART



## **SECTION II – BUDGET REQUEST**

Tampa Sports Authority

GOLF COURSE OPERATIONS COMPONENT UNIT  
COMBINING STATEMENT OF REVENUE AND EXPENSES

Prepared on a Cash Basis

	BABA ZAHARIAS						ROCKY POINT						ROGERS PARK						TOTALS BY FISCAL YEAR					
	2011		2012		2013		2011		2012		2013		2011		2012		2013		2011		2012		2013	
	ACTUAL	PROJECTED	BUDGET	ACTUAL	PROJECTED	BUDGET	ACTUAL	PROJECTED	BUDGET	ACTUAL	PROJECTED	BUDGET	ACTUAL	PROJECTED	BUDGET	ACTUAL	PROJECTED	BUDGET	ACTUAL	PROJECTED	BUDGET	ACTUAL	PROJECTED	BUDGET
<b>Operating Revenue</b>																								
Golf fees	807,535	787,207	813,903	890,101	923,830	920,085	591,113	645,008	606,742	591,113	645,008	606,742	2,288,749	2,356,045	2,340,730	182,712	192,471	176,416	182,712	192,471	176,416	397,370	404,115	416,544
Merchandise	48,701	51,731	48,748	79,257	82,452	72,901	54,754	58,287	54,767	54,754	58,287	54,767	110,469	120,924	131,250	13,354	16,358	15,259	13,354	16,358	15,259	76,858	89,089	96,944
Food & Beverage	137,123	133,006	137,636	149,778	150,184	147,657	13,354	16,358	15,259	13,354	16,358	15,259	66,908	63,039	69,047	125,679	126,989	128,330	125,679	126,989	128,330	3,071,369	3,168,709	3,158,964
Memberships	29,078	35,007	37,903	34,426	37,724	43,782	1,212,334	1,258,141	1,243,709	836,598	903,617	877,065	836,598	903,617	877,065	8%	3%	0%	8%	3%	0%	8%	3%	0%
Driving range	0	0	0	58,772	63,950	59,283																		
<b>Total operating revenues</b>	<b>1,022,437</b>	<b>1,006,951</b>	<b>1,038,190</b>	<b>1,212,334</b>	<b>1,258,141</b>	<b>1,243,709</b>	<b>1,212,334</b>	<b>1,258,141</b>	<b>1,243,709</b>	<b>836,598</b>	<b>903,617</b>	<b>877,065</b>	<b>3,071,369</b>	<b>3,168,709</b>	<b>3,158,964</b>									
<b>Operating Revenues Percentage Increase(Decrease) from Prior Year</b>	5%	-2%	3%	7%	4%	-1%				13%	8%	-3%	8%	3%	0%				8%	3%	0%			
<b>Operating Expenses</b>																								
Cost of merchandise sold	34,852	36,555	34,714	53,752	49,276	50,078	53,752	49,276	50,078	42,210	37,721	37,554	130,814	123,552	122,347	47,697	46,227	46,508	42,210	37,721	37,554	130,814	123,552	122,347
Cost of Food & Beverage	47,697	46,227	46,508	53,080	62,945	53,497	53,080	62,945	53,497	46,515	46,930	41,133	147,292	156,102	141,139	310,244	297,259	337,564	147,292	156,102	141,139	1,043,985	979,685	1,064,969
Clubhouse operators	310,244	297,259	337,564	376,698	367,259	377,194	376,698	367,259	377,194	315,167	315,167	350,210	1,608,351	1,600,370	1,628,895	539,311	537,093	544,295	539,311	537,093	544,295	532,703	499,118	526,026
Course maintenance	526,137	524,956	534,148	182,644	173,780	181,124	182,644	173,780	181,124	181,672	166,926	175,259	532,703	499,118	526,026	168,387	158,412	169,643	532,703	499,118	526,026	3,463,146	3,358,827	3,483,374
General and administrative	168,387	158,412	169,643	182,644	173,780	181,124	182,644	173,780	181,124	181,672	166,926	175,259	532,703	499,118	526,026	1,087,317	1,063,409	1,122,578	1,087,317	1,063,409	1,122,578	3,463,146	3,358,827	3,483,374
<b>Total operating expenses</b>	<b>1,087,317</b>	<b>1,063,409</b>	<b>1,122,578</b>	<b>1,205,484</b>	<b>1,190,352</b>	<b>1,206,188</b>	<b>1,205,484</b>	<b>1,190,352</b>	<b>1,206,188</b>	<b>1,170,344</b>	<b>1,105,066</b>	<b>1,154,609</b>	<b>3,463,146</b>	<b>3,358,827</b>	<b>3,483,374</b>									
<b>Operating Expenses Percentage Increase(Decrease) from Prior Year</b>	-5%	-2%	6%	-7%	-1%	1%	-7%	-1%	1%	-8%	-6%	4%	-7%	-3%	3.71%				-7%	-3%	3.71%			
<b>Non-operating revenues(expenses)</b>	(370)	(400)	(400)	(691)	(700)	(700)	(691)	(700)	(700)	(948)	(900)	(900)	(2,009)	(2,000)	(2,000)				(2,009)	(2,000)	(2,000)			
<b>Operating &amp; Nonoperating Loss Before Grants and Contributions</b>	<b>(65,250)</b>	<b>(56,858)</b>	<b>(84,788)</b>	<b>6,159</b>	<b>67,089</b>	<b>36,821</b>	<b>6,159</b>	<b>67,089</b>	<b>36,821</b>	<b>(334,695)</b>	<b>(202,349)</b>	<b>(278,444)</b>	<b>(393,786)</b>	<b>(192,118)</b>	<b>(326,411)</b>				<b>(393,786)</b>	<b>(192,118)</b>	<b>(326,411)</b>			
<b>Operating contributions</b>	90,015	93,345	84,788	97,121	(41,577)	(36,821)	97,121	(41,577)	(36,821)	327,694	278,784	278,444	514,830	330,551	326,411				514,830	330,551	326,411			
<b>Operating Gain(Loss) After and Contributions</b>	<b>24,765</b>	<b>36,487</b>	<b>0</b>	<b>103,280</b>	<b>25,512</b>	<b>(0)</b>	<b>103,280</b>	<b>25,512</b>	<b>(0)</b>	<b>(7,001)</b>	<b>76,435</b>	<b>0</b>	<b>121,045</b>	<b>138,433</b>	<b>0</b>				<b>121,045</b>	<b>138,433</b>	<b>0</b>			
<b>DROP (Potential Financial Impact)</b>	0	0	0	0	0	0	0	0	0	0	0	0	0	0	0				0	0	0			
<b>Loss(Gain) Percentage After Contributions By Golf Course, By Fiscal Year Totals</b>	20%	26%	153%	85%	18%	-143%	85%	18%	-143%	-6%	55%	90%	100%	100%	100%				100%	100%	100%			
<b>Capital Expenditures Funded by City of Tampa</b>	93,656	174,408	215,986	146,758	211,533	211,458	146,758	211,533	211,458	101,757	161,295	170,032	342,171	547,237	597,477				342,171	547,237	597,477			



# TAMPA SPORTS AUTHORITY GOLF COURSES

## Total Revenue Comparison

FY 2012-2013

Year 1 FY09-10	Year 2 FY10-11	Year 3 FY11-12 Projected	Year 4 FY12-13 Budgeted
-------------------	-------------------	--------------------------------	-------------------------------

**Total  
Revenue**

\$2,850,250    \$3,071,369    \$3,168,709    \$3,158,964



# TAMPA SPORTS AUTHORITY GOLF COURSES

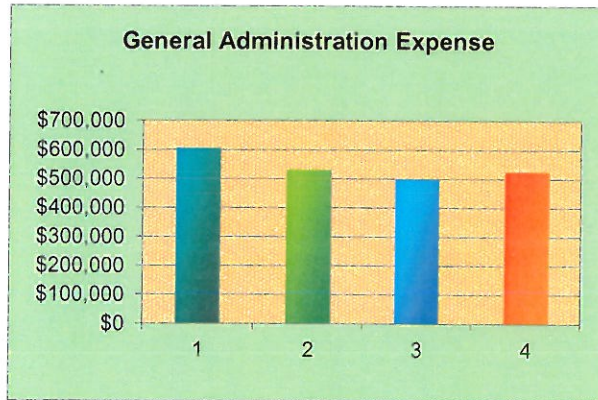
## General Administration Expense Comparison

FY 2012-2013

Year 1 FY09-10	Year 2 FY10-11	Year 3 FY11-12 Projected	Year 4 FY12-13 Budgeted
-------------------	-------------------	--------------------------------	-------------------------------

**Total  
General  
Administration**

\$605,735      \$532,703      \$499,118      \$526,026



# TAMPA SPORTS AUTHORITY GOLF COURSES

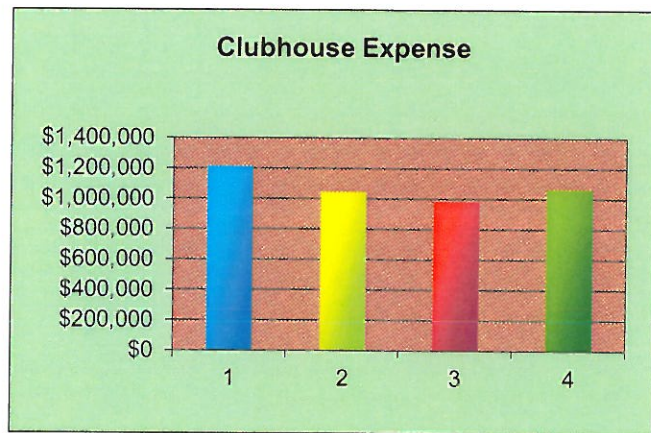
## Clubhouse Expense Comparison

FY 2012-2013

Year 1 FY09-10	Year 2 FY10-11	Year 3 FY11-12 Projected	Year 4 FY12-13 Budgeted
-------------------	-------------------	--------------------------------	-------------------------------

**Total  
Clubhouse**

\$1,213,432    \$1,043,985    \$979,685    \$1,064,969

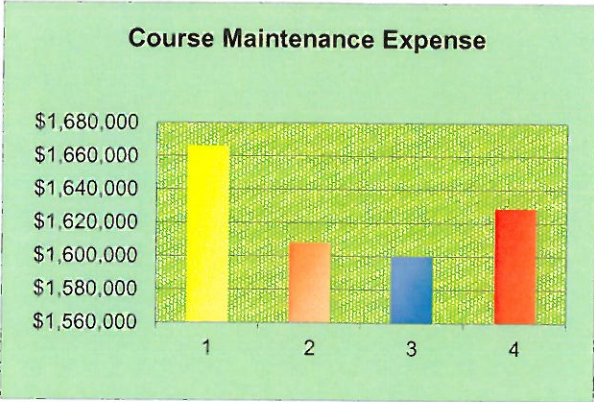




**TAMPA SPORTS AUTHORITY GOLF COURSES**  
**Course Maintenance Expense Comparison**  
**FY 2012-2013**

Year 1 FY09-10	Year 2 FY10-11	Year 3 FY11-12 Projected	Year 4 FY12-13 Budgeted
-------------------	-------------------	--------------------------------	-------------------------------

<b>Total Course Maintenance</b>	\$1,665,953	\$1,608,351	\$1,600,370	\$1,628,895
---	-------------	-------------	-------------	-------------



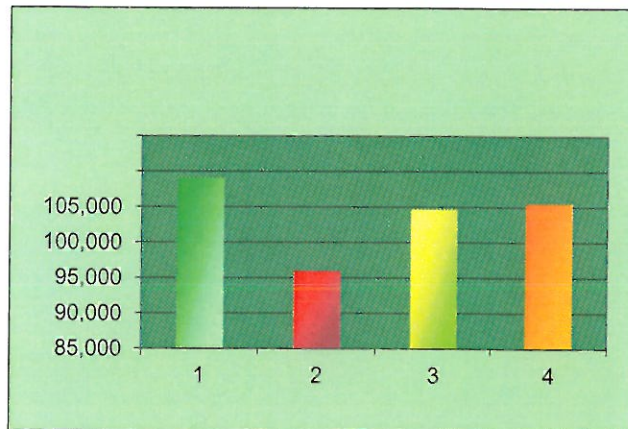
# TAMPA SPORTS AUTHORITY GOLF COURSES

## Paid Players Comparison

FY 2012-2013

Year 1 FY09-10	Year 2 FY10-11	Year 3 FY11-12 Projected	Year 4 FY12-13 Budgeted
-------------------	-------------------	--------------------------------	-------------------------------

Babe Zaharias	35,538	36,887	36,701	37,068
Rogers Park	22,670	26,627	29,245	29,538
Rocky Point	37,776	39,488	41,854	42,272
<b>Total Paid Players</b>	<b>95,984</b>	<b>103,002</b>	<b>107,800</b>	<b>108,878</b>



## **SECTION III – MEMBERSHIP**



## Tradition Membership Plan Information

Membership in the Tradition Membership Plan provides prepaid golf privileges at all (3) Tampa Sports Authority Golf Courses (Babe Zaharias, Rocky Point and Rogers Park). Membership includes walking privileges or ½ cart at the special rate of \$12.00 for 18 holes, \$7.00 for 9 holes or \$10 for twilight. This membership is valid for one year from date of purchase.

### Membership Fee Information

- Monthly membership fees (non refundable) applicable under this plan as outlined:
  - **Single membership** (7 days playing privileges) **\$69.00** per month
  - **Family membership** (Husband & Wife, 7 days playing privileges) **\$89.00** per month
  - **Dependent Children under the age of 14 free** (Added under the Family Membership) **\$25.00** for each dependant between the ages of 15-18, per month.
- Monthly membership fees are due by the 1<sup>st</sup> of every month and charged to your credit card number on file. **Cash and checks will not be accepted**
- If an account goes unpaid for 20 days, the membership will be voided. An application fee Of **\$100.00** will then be required
- There will be no pro-ration of member fees
- Members are not allowed to suspend their membership, for any period of time during the length of this contract

### Tradition Membership Policies and Procedures

- The Tradition Membership privileges are granted solely at the discretion of the Tampa Sports Authority (TSA). Sales of these memberships can be limited as TSA deems appropriate. TSA reserves the right to cancel the Tradition Membership Plan and this agreement at the end of one year
- All operations of the facilities and all policies of the Golf Course will be established and regulated by the TSA
- The Tradition Membership Plan will be awarded upon receipt of all fees and monthly dues
- Each member must check in at pro-shop and starter prior to play
- Dependent Children must have a full driver's license to operate golf carts
- A cap on the number of memberships can and may be established by the TSA
- TSA will establish all initiation fees, monthly and cart fees as deemed appropriate
- Membership privileges are restricted to normal hours of operations
- TSA has the right to restrict play on certain days and times for special use ( including but not limited to tournaments, special events and maintenance of courses and practice areas)
- All members are subject to the rules, regulations and policies established by the TSA. Violation could result in suspension or revocation of membership without refund

Initial \_\_\_\_\_



Official Use Only  
Membership Numbers

### Tradition Golf Membership Plan Application

(Please Print)

Name: \_\_\_\_\_  
Last First Middle

Address: \_\_\_\_\_  
Street Address City state Zip

Email Address: \_\_\_\_\_

Home Phone: \_\_\_\_\_ Cell Phone: \_\_\_\_\_

\_\_\_\_ I wish to purchase the Tradition Membership Plan  
\_\_\_\_ Single Membership \$69.00 + tax \_\_\_\_ Family Membership (2) \$89.00 + tax Dependents # \_\_\_\_ @ \$25.00 + tax

**Tradition Membership Plan:**

- Provides prepaid golf privileges at Rogers Park GC, Rocky Point GC and Babe Zaharias GC
- Walking privileges
- Members ½ cart fee rate (18 holes - \$12.00, 9 holes - \$7.00)

The following persons are to be included under my Tradition Membership Plan:

Name \_\_\_\_\_  
Name \_\_\_\_\_  
Name \_\_\_\_\_  
Name \_\_\_\_\_

I have read the attached fact sheet concerning membership on the above plans. I agree to abide by all rules and regulations of the Tampa Sports Authority Golf Courses.

Signature: \_\_\_\_\_ Date \_\_\_\_\_

## TSA Discount Golf Card

Enjoy up to 25% savings on every round of golf at Babe Zaharias, Rogers Park and Rocky Point golf courses

- TSA Discount Golf Cards are offered for purchase and are usable for unlimited play for one year of date of purchase
- A special card purchase discount will be offered for residents of the City of Tampa. Proof of residency is required at the time of purchase
- A special green fee discount is offered to seniors over the age of 55. Proof of age is required at the time of purchase
- All card rates as well as green fees associated with the card are determined and can be changed at any time by the TSA
- Green fees for the day is included the day of the card purchase
- Junior golfer is defined as a high school student (or younger)

### TSA Discount Golf Card Rates

City of Tampa Resident - \$60                      Family (2) - \$90

Non Resident - \$70                                      Family (2) - \$100

Junior dependant – N/C

Junior - \$25

Free round of golf with purchase of card

## TSA Discount Golf Card

**Name (s) :** \_\_\_\_\_

**Address:** \_\_\_\_\_

**City:** \_\_\_\_\_ **Zip Code:** \_ \_ \_ \_ \_

**Phone:** \_\_\_\_ - \_\_\_\_ - \_\_\_\_ **Renewal:** Y \_\_\_ N \_\_\_

**E-Mail:** \_\_\_\_\_

\*The information above is correct and I agree to abide by the rules and policies of the Tampa Sports Authority.

\_\_\_\_\_

Customer's Signature

\_\_\_\_\_

Staff Signature

## **SECTION IV – COMPETITIVE RATES**

**TAMPA SPORTS AUTHORITY - GOLF OPERATIONS  
NON SEASONAL SURVEY - WEEKDAY**

<b>COURSE</b>	<b>COUNTY</b>	<b>AM</b>	<b>PM</b>	<b>Twilight</b>	<b>WALK</b>
Silver Dollar	Hills.	25.00	18.00	14.00	NO
Northdale	Hills.	30.00	27.00	20.00	YES
Scotland Yards	Pasco	30.00	25.00	20.00	NO
Chi Chi Rodriquez	Pinellas	30.00	25.00	20.00	Yes
Heritage Isle	Hills.	32.00	23.00	19.00	NO
Tarpon Springs	Pinellas	29.00	25.00	21.00	NO
Heritage Harbor	Hills.	30.00	27.00	18.00	NO
Mangrove Bay	Pinellas	47.00	31.00	31.00	YES
USF	Hills.	30.00	25.00	20.00	YES
Pebble Creek	Hills.	34.00	24.00	19.00	NO
Walden Lakes Hills	Hills	36.00	28.00	24.00	NO
Apollo Bch Golf & Sea	Hills	26.75	26.75	26.75	YES
Plantation Palms	Paso	55.00	39.00	25.00	NO
Summerfield	Hills	37.00	27.00	22.00	NO
Bloomingle	Hills	32.00	25.00	24.00	NO
Walden Lakes Lakes	Hills.	40.00	34.00	30.00	NO
Westchase	Hills.	49.00	31.00	21.00	NO
Rocky Point Regular	Hills.	26.00	26.00	22.00	YES
Babe Zaharias Regular	Hills.	26.00	26.00	22.00	YES
Rogers Park Regular	Hills.	24.00	24.00	22.00	YES
Rocky Point Card	Hills.	21.00	21.00	17.00	YES
Rogers Park Card	Hills.	19.00	19.00	17.00	YES
Babe Zaharias Card	Hills.	21.00	21.00	17.00	YES
Rocky Point Senior	Hills.	19.00	19.00	17.00	YES
Babe Zaharias Senior	Hills.	19.00	19.00	17.00	YES
Rogers Park Senior	Hills.	18.00	18.00	16.00	YES
<b>Survey taken - July 2012</b>					



**TAMPA SPORTS AUTHORITY - GOLF OPERATIONS  
NON SEASONAL SURVEY - WEEKEND**

<b>COURSE</b>	<b>COUNTY</b>	<b>AM</b>	<b>PM</b>	<b>Twilight</b>	<b>WALK</b>
Silver Dollar	Hills.	25.00	18.00	14.00	NO
Scotland Yards	Pasco	30.00	25.00	20.00	NO
Tarpon Springs	Pinellas	30.00	25.00	20.00	NO
Mangrove Bay	Pinellas	47.00	31.00	31.00	YES
Chi Chi Rodriquez	Pinellas	30.00	25.00	20.00	YES
Northdale	Hills.	35.00	30.00	22.00	YES
Heritage Harbor	Hills.	35.00	30.00	18.00	NO
Apollo Bch Golf & Sea	Hills	26.75	26.75	26.75	YES
Walden Lakes- Hills	Hills.	40.00	32.00	26.00	NO
Pebble Creek	Hills	39.00	29.00	19.00	NO
USF	Hills.	30.00	25.00	20.00	YES
Heritage Isle	Hills.	37.00	33.00	20.00	NO
Summerfield	Hills	43.00	31.00	24.00	NO
Walden Lakes- Lakes	Hills.	50.00	38.00	28.00	NO
Plantation Plams	Pasco	65.00	45.00	25.00	NO
Bloomingle	Hills	35.00	29.00	24.00	NO
Westchase	Hills.	59.00	49.00	31.00	NO
Rocky Point Regular	Hills.	39.00	27.00	22.00	YES
Babe Zaharias Regular	Hills.	39.00	27.00	22.00	YES
Rogers Park Regular	Hills.	35.00	25.00	19.00	YES
Rocky Point Card	Hills.	29.00	21.00	17.00	YES
Rogers Park Card	Hills.	27.00	21.00	17.00	YES
Babe Zaharias Card	Hills.	29.00	21.00	17.00	YES
Rocky Point Senior	Hills.	28.00	19.00	17.00	YES
Babe Zaharias Senior	Hills.	28.00	19.00	17.00	YES
Rogers Park Senior	Hills.	25.00	19.00	17.00	YES
<b>Survey taken - July 2012</b>					

**TAMPA SPORTS AUTHORITY - GOLF OPERATIONS  
SEASONAL SURVEY - WEEKEND**

<b>COURSE</b>	<b>COUNTY</b>	<b>AM</b>	<b>PM</b>	<b>Twilight</b>	<b>WALK</b>
Northdale	Hills.	35.00	30.00		YES
Scotland Yards	Pasco	35.00			NO
Chi Chi Rodriquez	Pinellas	40.00			Yes
Heritage Isle	Hills.	40.00			NO
Tarpon Springs	Pinellas	40.00			NO
Heritage Harbor	Hills.	35.00		18.00	NO
Mangrove Bay	Pinellas	44.00			YES
USF	Hills.	44.00	36.00	24.00	YES
Pebble Creek	Hills.	45.00	35.00	30.00	NO
Walden Lakes Hills	Hills	36.00			NO
Apollo Bch Golf & Sea	Hills	28.00			YES
Plantation Palms	Paso	25.00			NO
Summerfield	Hills	65.00	45.00	35.00	NO
Bloomingleale	Hills	49.00	35.00		NO
Walden Lakes Lakes	Hills.	57.00			NO
Westchase	Hills.	94.00		52.00	NO
Rocky Point Regular	Hills.	40.00	33.00	23.00	YES
Babe Zaharias Regular	Hills.	40.00	33.00	22.00	YES
Rogers Park Regular	Hills.	39.00	32.00	22.00	YES
Rocky Point Card	Hills.	30.00	28.00	20.00	YES
Rogers Park Card	Hills.	32.00	29.00	19.00	YES
Babe Zaharias Card	Hills.	30.00	28.00	19.00	YES
Rocky Point Senior	Hills.	27.00	24.00	19.00	YES
Babe Zaharias Senior	Hills.	27.00	24.00	18.00	YES
Rogers Park Senior	Hills.	26.00	25.00	18.00	YES
<b>Survey taken - July 2012</b>					

**TAMPA SPORTS AUTHORITY - GOLF OPERATIONS  
SEASONAL SURVEY - WEEKDAY**

<b>COURSE</b>	<b>COUNTY</b>	<b>AM</b>	<b>PM</b>	<b>Twilight</b>	<b>WALK</b>
Northdale	Hills.	30.00	27.00		YES
Scotland Yards	Pasco	30.00			NO
Chi Chi Rodriquez	Pinellas	40.00			Yes
Heritage Isle	Hills.	33.00			NO
Tarpon Springs	Pinellas	40.00			NO
Heritage Harbor	Hills.	35.00	30.00		NO
Mangrove Bay	Pinellas	44.00			YES
USF	Hills.	37.00	31.00	24.00	YES
Pebble Creek	Hills.	39.00	29.00	24.00	NO
Walden Lakes Hills	Hills	36.00			NO
Apollo Bch Golf & Sea	Hills	25.00			YES
Plantation Palms	Paso	55.00	45.00	29.00	NO
Summerfield	Hills	41.00	31.00		NO
Bloomingleale	Hills	52.00			NO
Walden Lakes Lakes	Hills.	26.00			NO
Westchase	Hills.	85.00		52.00	NO
Rocky Point Regular	Hills.	36.00	30.00	23.00	YES
Babe Zaharias Regular	Hills.	36.00	30.00	22.00	YES
Rogers Park Regular	Hills.	35.00	29.00	22.00	YES
Rocky Point Card	Hills.	28.00	26.00	20.00	YES
Rogers Park Card	Hills.	27.00	26.00	19.00	YES
Babe Zaharias Card	Hills.	28.00	26.00	19.00	YES
Rocky Point Senior	Hills.	27.00	24.00	19.00	YES
Babe Zaharias Senior	Hills.	27.00	24.00	18.00	YES
Rogers Park Senior	Hills.	26.00	25.00	18.00	YES
<b>Survey taken - July 2012</b>					