



1965 Mercury Comet

Metal work / Body work / Fabrication & Restoration

Chase Collision



CHASE 衝突

2013 © CHASE COLLISION

Chase Collision retains sole copyright to its contributions to this book.

Chase Collision established MCMLXXXIII
522 Peninsula Blvd, Hempstead NEW YORK 11550
516*292*4342
LouisChaseCollision@gmail.com





Vehicle is brought to shop via flatbed

Inspected and analyzed to set up a work plan



Significant rear body rust and oxidation.



Rear body panel is damaged beyond repair. It will require replacement

Original paint being removed via chemical stripper



Vehicle is brought down to bare metal, paint removal reveals old body filler







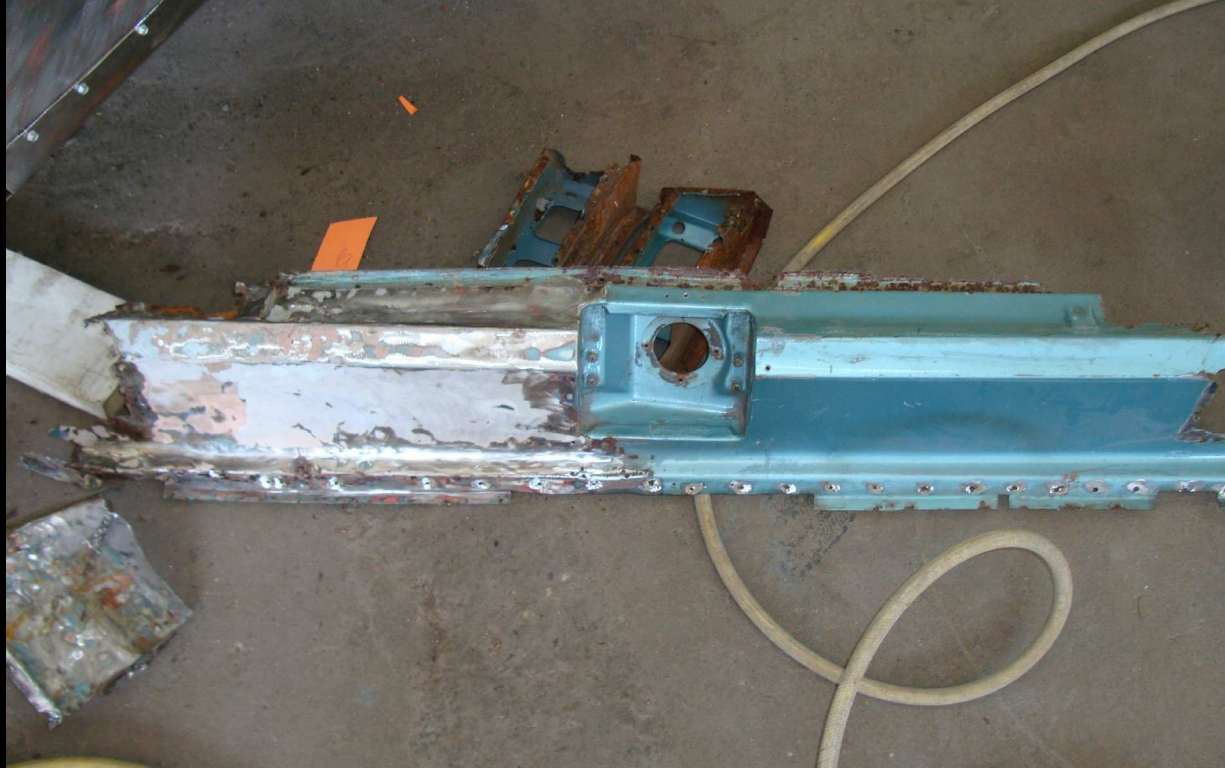


Old damaged components being removed



Rear body panel cut out

Rear body panel
removed



New rear body panel
fabricated from two
separate pieces of
cold rolled sheet steel





Test fit panels



Align with adjacent panels

Door skin panel
required partial
replacement



Fabricate new door
panel from new sheet
steel





Test fit newly fabricated panel



Door skin panel welded in, smoothed, and primed



Disassemble and prep for epoxy primer



Body work to remove imperfections



Block sand





Mask off vehicle



Prep for filler primer



Filler primer applied to entire vehicle body



After filler primer is block sanded vehicle is masked off, and sealed



Then the base color is applied



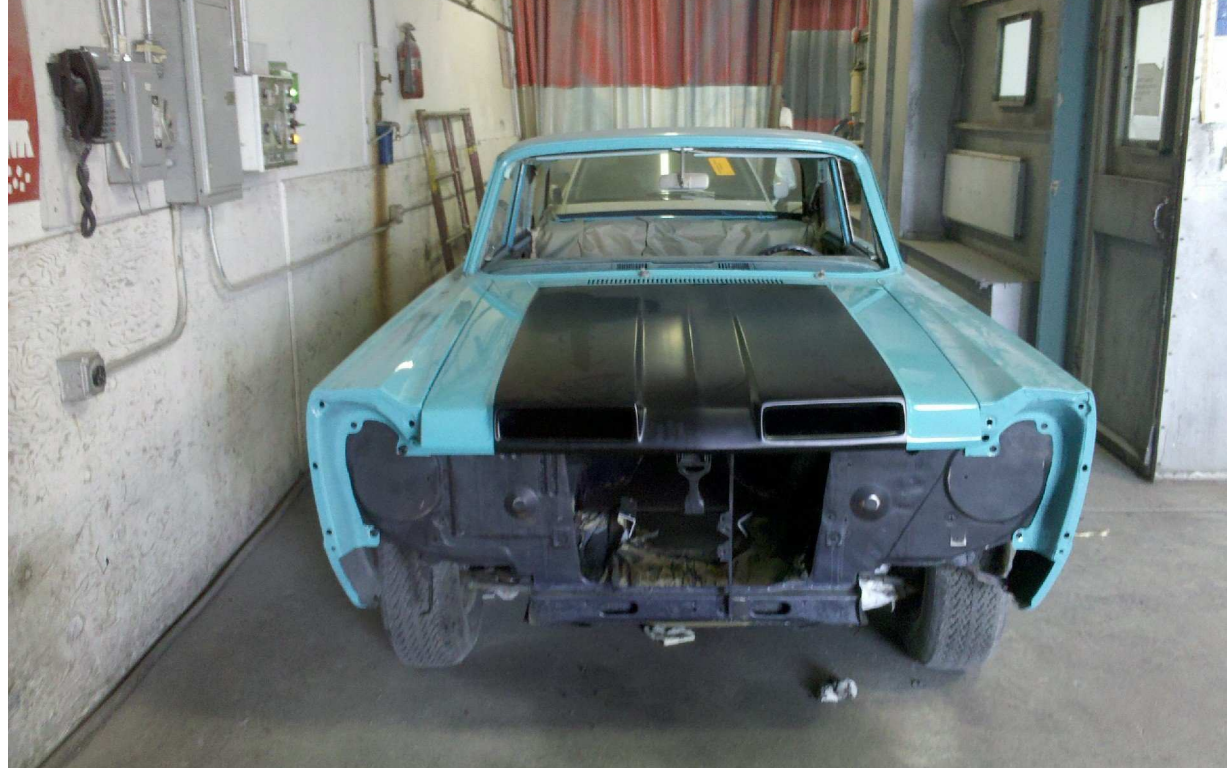


Check for blemishes



Final clean and apply clearcoat

Carefully assemble



Check final panel fit
and adjust as
necessary





Body repair and restoration procedure

1. Remove old paint, primer, body filler, and body panels which require replacement
2. Repair sheetmetal and/or replace body panels and patch panels
3. Clean metal and prep for primer
4. Spray with Epoxy primer
5. Do body work to remove imperfections then align panels
6. Check body lines and re-check panel fit and alignment
7. Apply polyester filler primer then block sand
8. Spray primer surfacer
9. Prep for paint
10. Mask off vehicle, apply sealer, basecoat, then clear coat
11. Color sand, buff, polish, hand glaze.



