

Observers: CLTAT

Center for Snow and Avalanche Studies

Profile # 19

Time: 0740 MST

Snowpack Profile

Date: 5/14/14

Location: SASP

Elev. 11,060'

Aspect: NE

Boot Pen: 20 cm

\angle : 3°

Air T: +1°C

Sky: 0

Precip: Nil

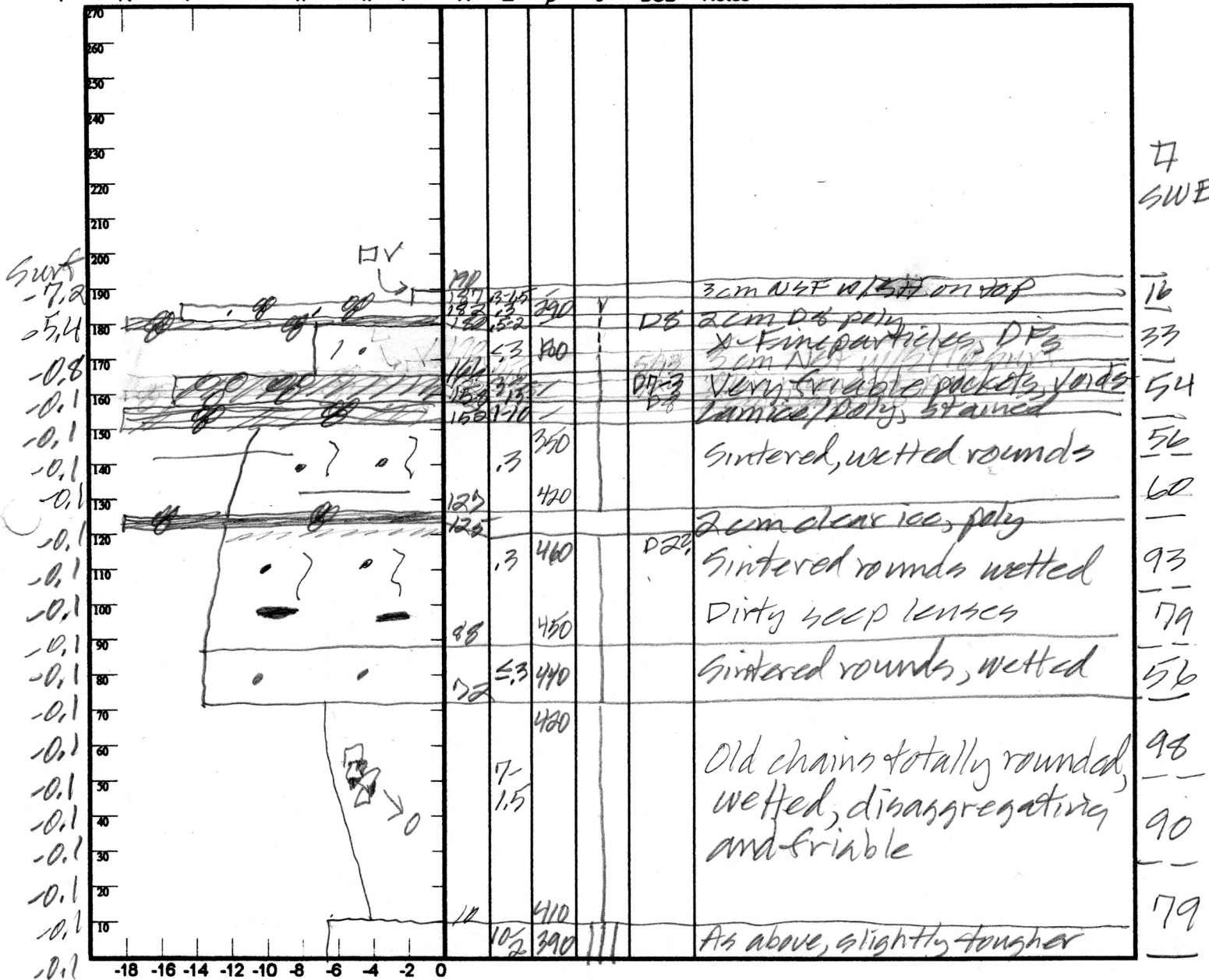
Wind: Nil

Prior Pit: # 16; 5/7/14

Total Snowpack SWE: 1714 mm H₂O

Notes: H₂O = 2.86 m; $\rho = 380 \text{ kg/m}^3$

T° K P 1F 4F F H E ρ θ DOD Notes



Potential Slab			Weak Layer & Bed Surface						
Ref	$H_{2O_{Nor}} \div H_{Nor} = \rho_{kg}$	$\sin \angle \times H_{Nor} \times \rho \times 9.8 = \tau_{Slab}$	F	E	T _{WL}	S	C	RB	Shear Quality
A	mm ÷ m =	X X X 9.8 =							
B	mm ÷ m =	X X X 9.8 =							

Notes: