

Interplay

Tea Leaf Quartet by Tim Latimer



Interplay

Tea Leaf Quartet quilt by Tim Latimer (timquilts.com)
featuring the *Interplay* collection by Nancy Heffron
for P&B Textiles • Quilt Size: 45" x 60"

Yardage

1 fat quarter (18" x 22") *each* of:

**IPLY 681 MU, IPLY 682 K, IPLY 682 W,
IPLY 683 MU, IPLY 684 K, IPLY 684 W,
IPLY 685 E, IPLY 685 G, IPLY 685 S,
IPLY 686 B, IPLY 686 K and IPLY 686 O**

Binding **any IPLY fabric** 1/2 yard

Backing **any IPLY fabric** 3 yards

Template Plastic

Cutting

From each fat quarter cut:

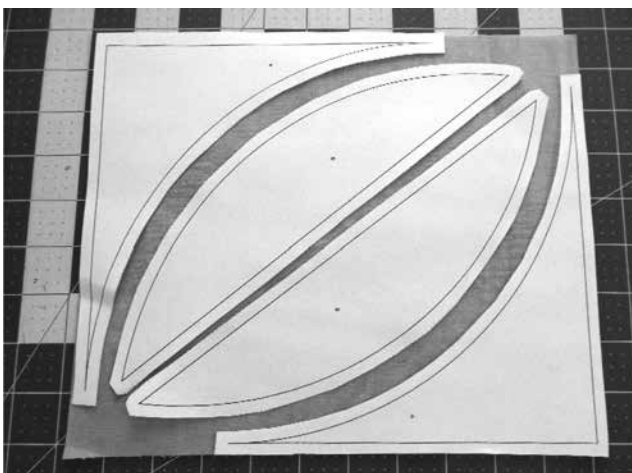
- (4) 9" x 11" rectangles

From the binding fabric cut:

- (6) 2 1/4" x 42" strips

Block Assembly

1. Trace the A and B templates onto template plastic and cut out each template. Use the templates to cut 2 A pieces and 2 B pieces from each 9" x 11" rectangle as shown.

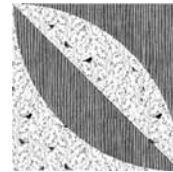


2. Referring to the quilt image for fabric placement guidance, sort the A and B pieces into 12 sets. Each set should contain four matching A and B pieces of two coordinating fabrics.

3. Using the pieces from one set, place two different B pieces right sides together; join the pieces along their straight edges using a 1/4" seam allowance. Press the seam allowances open.

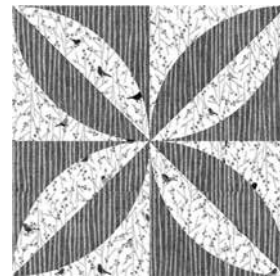
4. Fold the B unit from step 3 in half and finger press the curved edge to mark the center point. Fold two different A piece in half and finger press the curved edge to mark the center point.

5. With right sides together, pin an A piece to one side of the B unit, aligning the raw edges and matching the center points and ends. Sew the pieces together using a 1/4" seam allowance. In the same way, sew the second A piece to the opposite side of the B unit to make a quarter-block unit as shown.



6. Repeat steps 3–5 to make a total of four quarter-block units.

7. Lay out the units from step 6 in a four-patch arrangement as shown. Join the units into rows and then join the rows to make one block. Make a total of 12 blocks.



Quilt Assembly and Finishing

8. Lay out the blocks in four rows of three blocks each as shown in the quilt image. Join the blocks into rows and then join the rows.

9. Layer the quilt top with batting and backing; baste. Quilt as desired. Using the 2 1/4"-wide binding strips, bind the edges to finish.

Templates

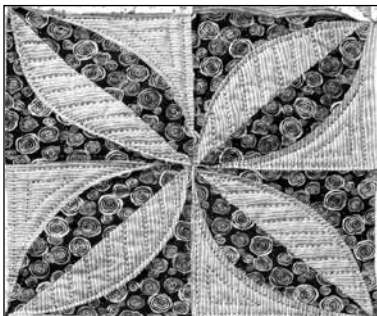
should measure 7 1/2"

1/4" seam allowance

A

1/4" seam allowance

B



Sample Quilting Design

Interplay

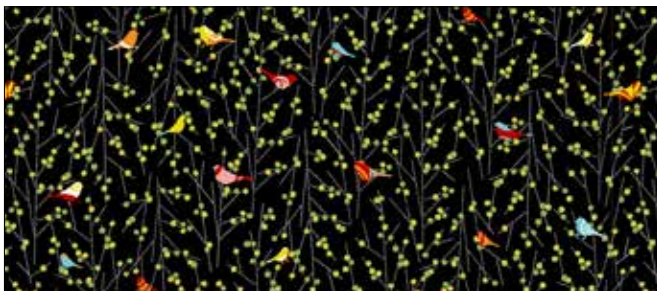
Fabric Collection by **Nancy Heffron**



IPLY 681 MU



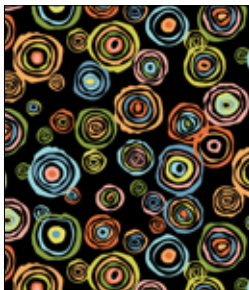
IPLY 683 MU



IPLY 682 K



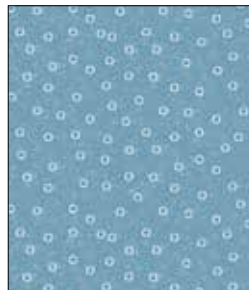
IPLY 682 W



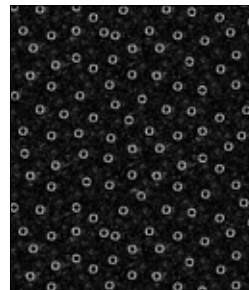
IPLY 684 K



IPLY 684 W



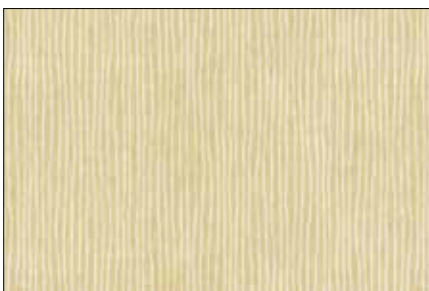
IPLY 686 B



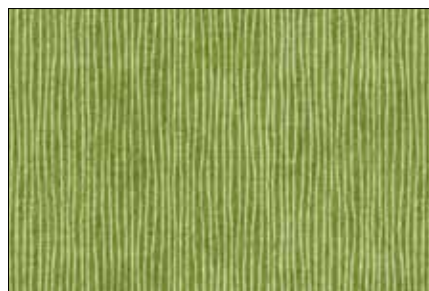
IPLY 686 K



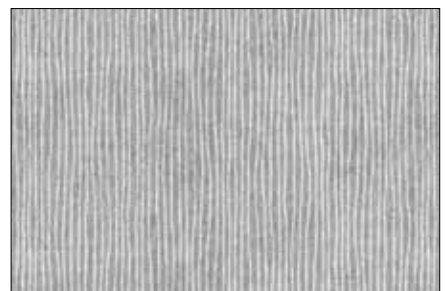
IPLY 686 O



IPLY 685 E



IPLY 685 G



IPLY 685 S



P&B Textiles ♦ www.pbtex.com ♦ 800-351-9087

45-47 Washington St., Pawtucket, RI 02860 ♦ 237 W. 35th St., 11th floor, New York, NY 10001

▲ 100% cotton ♦ Cold wash & dry ♦ 43" / 44" ♦ Colors may vary due to printing process

All fabrics shown at 25% scale.