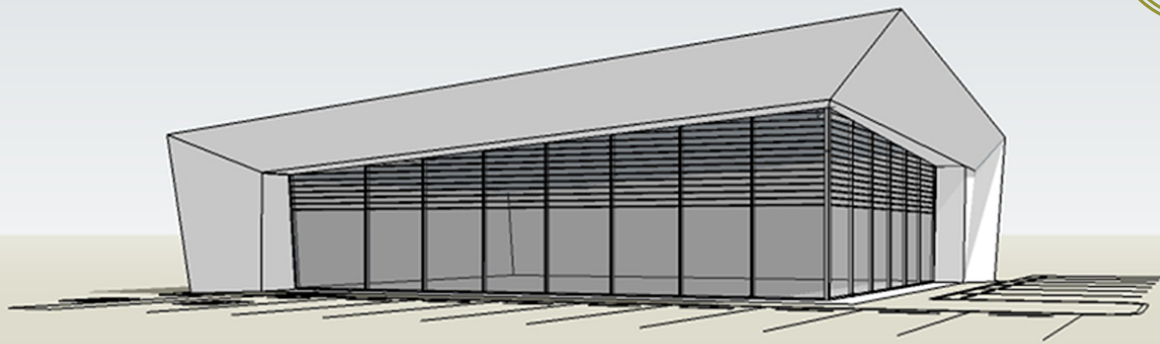


19TH & SHEPHERD

PHASE II

Houston Heights

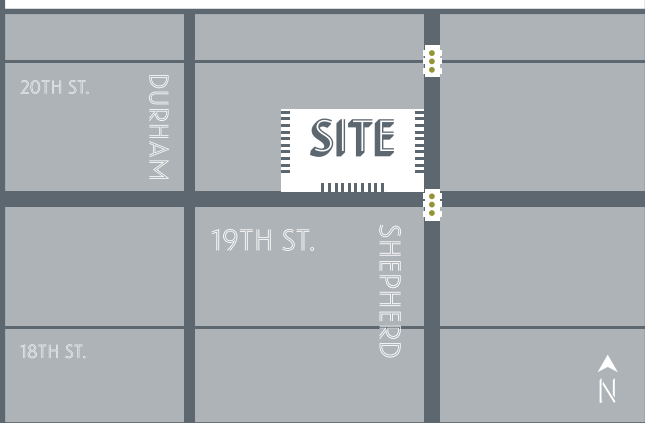


| | | |
|---|---------------------------------------|--|
| LOCATION : | SIZE : | THE HIGHEST TRAFFICKED INTERSECTION IN HOUSTON HEIGHTS FRONT DOOR TO THE 19 STREET HISTORIC SHOPPING DISTRICT AMONGST LARGEST CLUSTER OF RETAIL IN THE HOUSTON HEIGHTS APPROX 8:1 PARKING RATIO - VERY RARE PARKING RATIO INSIDE LOOP SHORT DRIVE TIME TO GARDEN OAKS IN THE HEART OF THE HEIGHTS |
| 725 W. 19TH ST. | 3,800 SF. BUILDING 13,100 SF. LAND | |
| MID-WAY BETWEEN DURHAM & N. SHEPHERD | TRAFFIC COUNTS: | |
| | 35,000 CARS A DAY | |
| AREA TRAFFIC GENERATORS : | | |

CONTACT **BRYAN DANNA** : PRINCIPAL

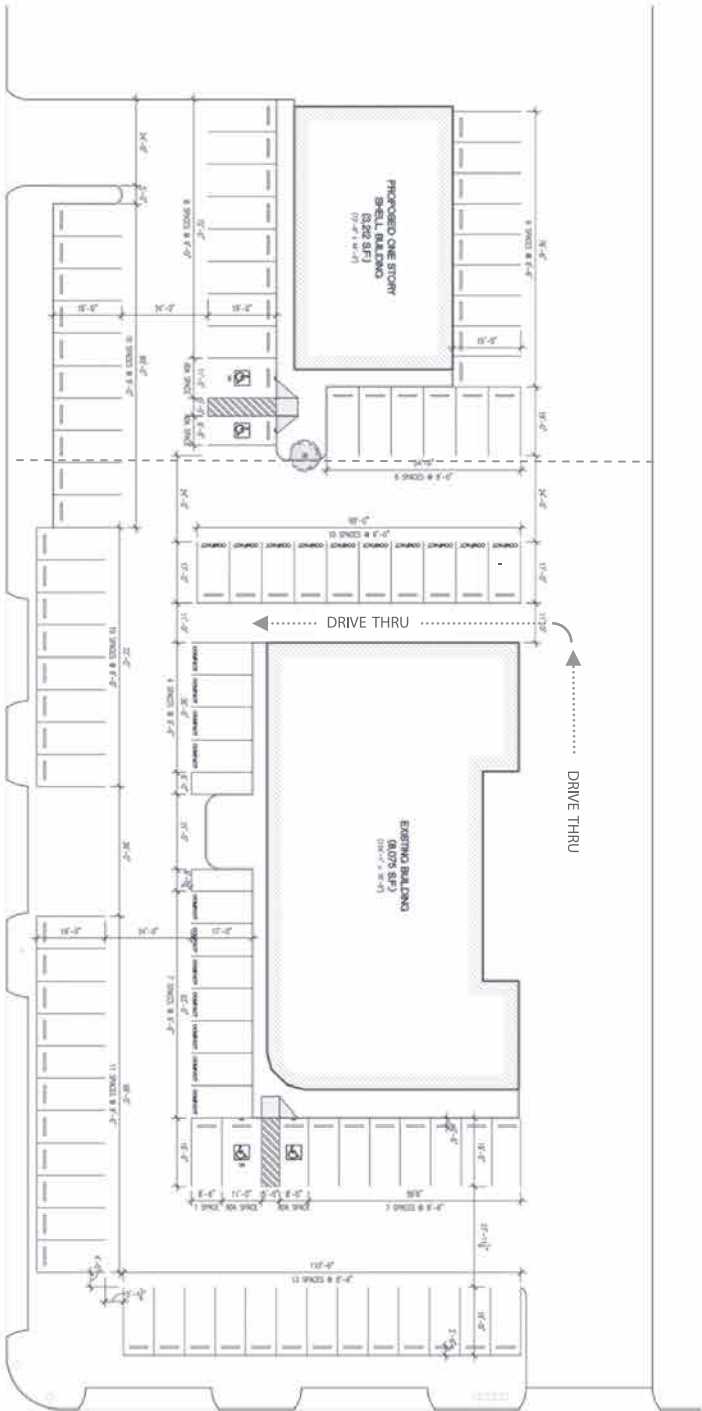
C : 832.455.4343 | O : 713.357.5800

REVIVECO.COM | BRYAN@REVIVECO.COM



PHASE II
COMING SOON!!!

PHASE I
CONSTRUCTION COMPLETE



PROPOSED SITE PLAN

98 PARKING SPACES PROVIDED
21 COMPACT SPACES
4 ADA SPACES

**CISNEROS DESIGN STUDIO,
ARCHITECTS LLC**

2500 Summer St. Suite 1220 Houston, Texas 77007
(510) 712-040-7745 (713) 520-8554

**WEST 19TH
RETAIL CENTER**

WEST 19TH STREET
HOUSTON TX 77008

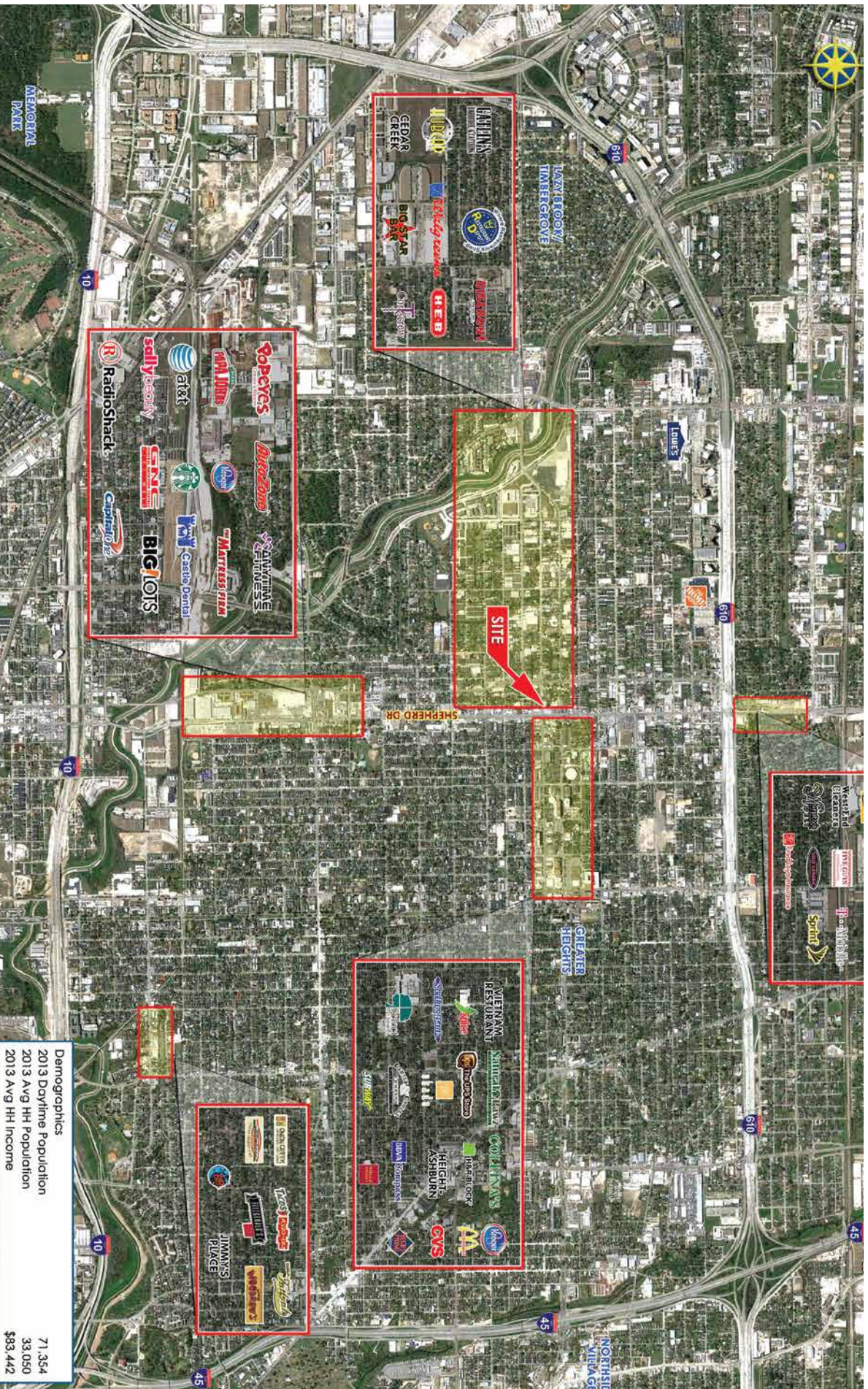
NOT FOR REGULATORY
APPROVAL. PERMITTING OR
CONSTRUCTION

A1.0

DATE ISSUED: 11 JANUARY 2013
SHEET

REVIEW

DEVELOPMENT
SUPPLYING DEMAND



Demographics
 2013 Daytime Population 71,354
 2013 Avg HH Population 33,050
 2013 Avg HH Income \$83,442