

2014 Benefit Auction

SATURDAY, NOVEMBER 1

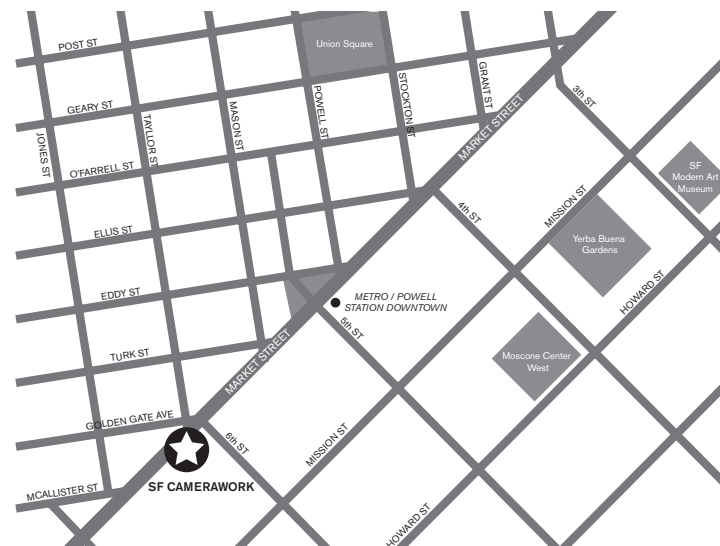
PREVIEW EXHIBITION: OCTOBER 25 - OCTOBER 31



www.sfcamerawork.org



John Goodman, *Phone Booth, Truro*, 1980, LOT 38



Conveniently located between the Powell and Civic Center
Bart/Muni stations; parking at the 5th & Mission Garage.

 [facebook.com/sfcamerawork](https://www.facebook.com/sfcamerawork)

 twitter.com/sfcamerawork

 [instagram.com/sfcamerawork](https://www.instagram.com/sfcamerawork)

www.sfcamerawork.org



SF Camerawork
1011 Market Street, 2nd Floor
San Francisco, CA 94103
415.487.1011
info@sfcamerawork.org
www.sfcamerawork.org

**SF CAMERAWORK
2014 BENEFIT AUCTION**
Saturday, November 1st, 2014
Registration begins at 11:00 AM
Bidding begins at 1:00 PM

AUCTIONEER
Rick Wester

ADMISSION
\$20 in advance at sfcamerawork.org
\$30 at the door

PREVIEW EXHIBITION
October 25 - October 31, 2014
Gallery hours:
Tuesday - Saturday, 12 - 6 PM
and by appointment

ABSENTEE BIDS
The absentee bid form appears
on page 27.

Absentee bids will be accepted
via fax, phone, or email.

The auction catalog can be
viewed at sfcamerawork.org.

Catalog Design:
Anthony Laurino Design

Cover: William Wegman,
The Wave, 2005. Lot 107

Welcome to SF Camerawork's 2014 Benefit Auction. Artists, collectors, and dealers from across the country have generously contributed over 100 vintage and contemporary artworks to this year's auction. We hope that you will find works herein to inspire your collecting spirit and the support of our organization.

2014 has been a year of important milestones for SF Camerawork. It was 40 years ago, in September 1974, that Camerawork opened its inaugural exhibition. Many years of exhibitions, events, publications, and creativity have followed, and we continue to push forward with our mission to support emerging artists and new ideas in the photographic arts.

On a more somber note, 2014 also marks 10 years since the passing of the incomparable Marnie Gillett who, as Executive Director for 20 years, led SF Camerawork into national prominence and supported the work of countless artists in the San Francisco Bay Area and beyond. Her legacy lives on through SF Camerawork and our extended community of supporters who continue to believe in SF Camerawork as a catalyst for production, innovation, and exploration in the field of photography.

Special thanks are due to Tony Page, Sterling Art Services, and Wirtz Gallery for their generous contribution of the matting and framing for the photographs in our auction.

Finally, we'd like to welcome and extend our deepest gratitude to auctioneer Rick Wester who is presiding over the SF Camerawork auction for the first time, donating his expertise and deep knowledge of photography towards a successful and rewarding sale.

We look forward to seeing you on November 1st!



Heather Snider
Executive Director



Jeanne Friscia
President, Board of Directors

2014 Auction Committee:
Ellen Shershow-Peña, Chair
Amy Cole
Lisa Cole
Monique Deschaines
Marcia Kadanoff

THANKS TO THE SUPPORTERS OF THE 2014 BENEFIT AUCTION

HONORARY COMMITTEE

Holly Baxter	Heather Holt	Tom Meyer
J.D. Beltran	Amanda Hughen	Lauren Meyers
Charlotte & Mike Ero	Alex Lloyd	Jane Levy Reed
Bernardo Hernandez	Kerry Mansfield & RJ Muna	Kirsten Wolfe



INFORMATION FOR BUYERS

The catalog description includes an estimated price for each lot. These estimates are the approximate prices we expect to be realized. They are not definitive. The bidding begins below the listed prices.

The Auctioneer will use the following increments:

\$200-1,000	\$50 increments
\$1,000-2,000	\$100 increments
\$2,000-5,000	\$200 increments
\$5,000 and above	\$500 increments

The name listed at the top of each lot indicates the artist who, in our best judgment, is the author of the work. (No unqualified statement regarding authorship is made or intended.)

When one date is given it refers to the date of the negative from which the print was made in the same year or soon thereafter. Some prints show two dates, the first referring to the negative and the second to the print. When the print date is unknown, but assumed later, "printed later" appears following the negative date.

Measurements generally refer to image size (sometimes paper size) and are given in inches. The height appears first, followed by the width.

All lots with estimated retail values marked by [] are offered for sale subject to a reserve, which is the confidential minimum price below which such lot will not be sold.

Please note that all statements and terms in this catalog are subject to the provisions of the Conditions of Sale and San Francisco Camerawork makes no warranties or representations with any lot.

CONDITIONS OF SALE

1. The sale will begin at 1 pm on Saturday, November 1, 2014 and will continue until all available prints have been presented for bidding. Photographs will be offered for sale in the same order in which they are listed here. Any artwork received after press time will be listed in an addendum available at the Auction. Likewise, an erratum will be produced, if needed, and made available at the Auction.
2. Any property may be withdrawn by SF Camerawork at any time before the actual sale without any liability therefor.
3. During the day of the sale, bids will be accepted from registered and absentee bidders. Bid numbers for registered bidders will be available throughout the day at the registration desk.
4. The highest bidder acknowledged by the auctioneer will be the purchaser. The auctioneer has the right to reject any bid and to advance the bidding at his/her absolute discretion and, in the event of any dispute between bidders, to determine the successful bidder or to re-offer and resell the article in dispute. Should there be any dispute after the sale, the auctioneer's record of final sale shall be conclusive.
5. Absentee bids will be accepted by fax, mail, telephone, email, or in person. The Absentee Bid Form on page 55 may be used to submit bids; additional forms will be available at the gallery. Such bids will be executed at the lowest possible price, subject to the reserve price and other bids. If matching bids have been entered by two or more parties, the first bid received will take preference.
6. We make no representation as to the condition of any lot sold and no reference to imperfection is made in the catalog description. All lots are sold "AS IS." Prospective purchasers should inspect the property before bidding to determine its condition.
7. Final bids for each item will be recorded by bid number and the print held at the cashier's desk until called for by the buyer. All purchases must be paid in full on the day of the auction.
8. Payment may be cash, personal check (with proper identification), or credit card. California state sales tax of 8.75 % will be added to all purchases in state. Purchases can be shipped for additional charges at the purchaser's request. If packing and handling of purchased lots is done by SF Camerawork, it is done at the entire risk of the purchaser.



STAFF

Heather Snider, Executive Director
Michael Thurin, Gallery Manager

BOARD OF DIRECTORS

Jeanne Friscia, President
Ellen Shershow-Peña, Vice-President
Anthony Laurino, Treasurer
Lisa Cole, Secretary
Jacqueline Bates
Rachel Been
Amy Cole
Monique Deschaines
Adriana Grino
Ken Hoffman
Miki Johnson
Marcia Kadanoff
Matt Kellogg
Carrie Levy
Darrin Martin
Bernadette Opine
Danica Sachs

ARTS ADVISORY COMMITTEE

Sergio De La Torre
Janet Delaney
Viet Lê
Carolina Ponce De León
Abigail Solomon-Godeau
David Spalding
Donna J. Wan

INTERNS

Rachel Davis
Jessie Fein
Jessica Kennedy
Marilyn Lagandaon
Alex Nguyen
Ashlei Quinones
Anna Rotty



LOT 1



LOT 4



LOT 2

LOT 2 DAVE ANDERSON
Royalty; 2003/2006; selenium toned gelatin silver print; 10 x 10 in; edition 1/25; signed on verso; \$800. Donated by the artist and Stephen Wirtz Gallery, San Francisco, CA.



LOT 3

LOT 3 JANE BALDWIN
Water Chestnuts - Okavango, Botswana; 2004/2009; Japanese gampi silk tissue with carbon ink; 5 x 5 in; Edition 1/5; signed on mount; \$500. Donated by the artist.



LOT 5

LOT 6 DEBRA BLOOMFIELD
Wilderness Book Cover Image; 2007/2014; archival pigment print; 13 7/8 x 24 1/8 in; AP; signed on verso; \$625. Donated by the artist and Robert Koch Gallery, San Francisco, CA.



LOT 6

LOT 5 RACHEL BARRETT
Kale Road; 2010/2014; digital c-print; 30 x 37 in; edition 3/5; signed on verso; \$1,200. Donated by the artist.

LOT 4 ROGER BALLEEN
Die Antwoord; 2008/2014; archival pigment print; 23 x 23 in; edition 17/50; signed on verso; \$1,500. Donated by the artist.



LOT 7

LOT 7 JENNIFER BRANDON
Accumulation I; 2011; chromogenic print; 30 x 22 in; edition 1/5; signature label; \$1,150. Donated by the artist.



LOT 10

LOT 10 RICK CHAPMAN
Tony Hawk Dropping In; 2002/2014; archival pigment print; 15 x 15 in; AP; signed on verso; \$1,500. Donated by the artist and Dolby Chadwick Galley, San Francisco, CA.



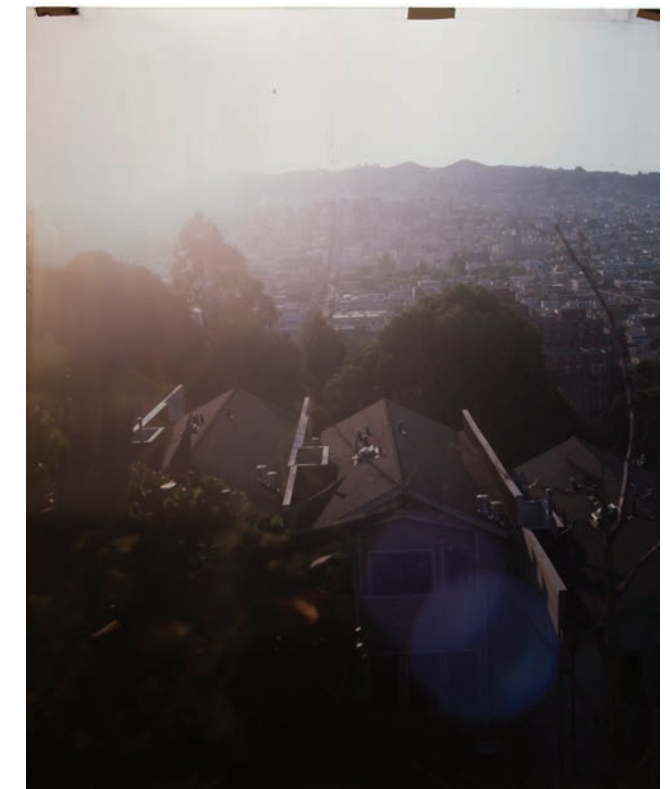
LOT 8

LOT 8 DAN BURKHOLDER
Typewriter and Books on Table; 2012/2014; platinum/palladium on vellum over gold leaf; 5 x 5 in; AP; signed on front; \$1,200. Donated by the artist and Catherine Couturier Gallery, Houston, TX.



LOT 9

LOT 9 SUSAN BURNSTINE
Crossing the Bridge; 2005; archival pigment print on rag paper, hand varnished; 12 x 12 in; signed on verso; \$850. Donated by the artist.



LOT 11

LOT 11 JOHN CHIARA
Kansas at 21st, Variation B; 2013; camera obscura ifochrome unique photograph; 33 1/2 x 27 in; signed on verso; [\$6,600]. Donated by the artist and Haines Gallery, San Francisco, CA.



LOT 12



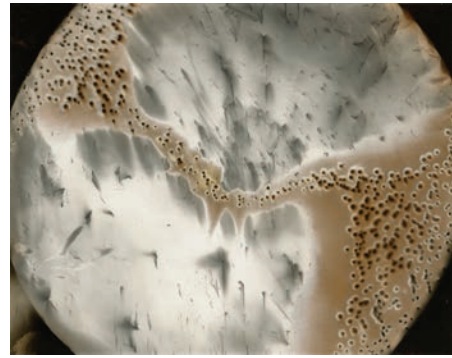
LOT 13



LOT 17



LOT 18



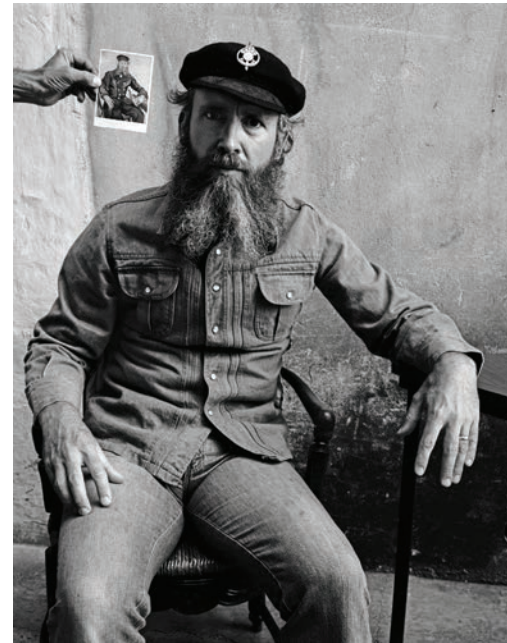
LOT 14



LOT 15



LOT 16



LOT 19



LOT 20



LOT 21

LOT 12 MARK CITRET
Three Levels, Community Center Garage, Mission Bay; 2004/2011; platinum/palladium print; 6 1/4 x 8 in; edition 4/22; signed on front; \$1,400. Donated by the artist and Weston Gallery, Carmel, CA.

LOT 13 DANIEL COBURN
Ascent; 2013; archival pigment print; 11 x 14 in; AP; signed on verso; \$400. Donated by the artist and Lot 21 Gallery, San Francisco, CA.

LOT 15 LINDA CONNOR
Fireworks for the Virgin; 2010/2014; archival digital print; 18 x 14 in; signed on verso; \$1,250. Donated by the artist and Haines Gallery, San Francisco, CA.

LOT 14 CHRISTOPHER COLVILLE
Untitled Work of Fire; 2014; unique gunpowder generated gelatin silver print; 3 1/2 x 4 1/2 in; signed on verso; \$1,250. Donated by the artist.

LOT 16 IMOGEN CUNNINGHAM
Cala; 1925/2005; ink on watercolor paper; 15 x 12 in; embossed signature on front; \$300. Donated by Thomas V. Meyer.

LOT 17 EDWARD S. CURTIS
Set of three unique photogravures. Shown above: *Hokak - Papago*; 1907; photogravure; 7 3/8 x 4 3/4 in; unsigned; \$600. Donated by Scott Nichols Gallery, San Francisco, CA.

LOT 20 SCOTT B. DAVIS
Foothills Palo Verde, Tucson Mountains; 2007/2014; platinum/palladium print; 8 x 10 in; edition 1/3; signed on verso; \$1,000. Donated by the artist and Etheron Gallery, Tucson, AZ.

LOT 18 BINH DANH
El Capitan, Yosemite, CA, June 11, 2012 #2; 2012; daguerrotype; 8 1/2 x 6 1/2 in; signed on mount; [\$10,200]. Donated by the artist and Haines Gallery, San Francisco, CA.

LOT 21 ROBERT DAWSON
Librar y, Death Valley National Park, CA; 2009/2014; digital inkjet print; 17 x 22 in; signed on verso; \$1,500. Donated by the artist and Scott Nichols Gallery, San Francisco, CA.

LOT 19 JUDY DATER *Postman, Arles*; 1976/2014; archival pigment print; 20 x 15 3/4 in; edition 1/10; signed on verso; \$1,500. Donated by the artist and Smith Anderson North, San Anselmo, CA.



LOT 22



LOT 23



LOT 24



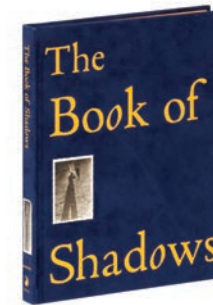
LOT 25



LOT 26



LOT 27



LOT 27 FRAENKEL GALLERY

Set of three unique gelatin silver prints with *The Book of Shadows*. Shown above: *Untitled (beach group)*; date unknown; gelatin silver print; 5 3/8 x 3 1/8 in; stamped "58" in blue ink; with *The Book of Shadows*; 2007; velvet hardcover book; 9 1/2 x 7 1/2 in; \$1,000. Donated by Fraenkel Gallery, San Francisco, CA.



LOT 28



LOT 29

LOT 29 JILL FREEDMAN

Circus Days; 1971/1978; from portfolio *Ten Photographers, Women's Campaign Fund, 1978*; gelatin silver print; 7 1/2 x 11 in; edition 39/75; signed on front; \$1,500. Donated by Susan Herzig & Paul Hertzmann, Paul M. Hertzmann, Inc.

LOT 22 JANET DELANEY

Event at City Hall; 1985/2013; archival pigment print; 15 1/2 x 15 1/4 in; edition 2/15; signed on verso; \$2,000. Donated by the artist.

LOT 23 MONICA DENEVAN

Oasis, Burma; 2010; gelatin silver print; 15 x 15 in; edition 2/25; signed on verso; \$1,000. Donated by the artist and Scott Nichols Gallery, San Francisco, CA.

LOT 25 LUKAS FELZMANN

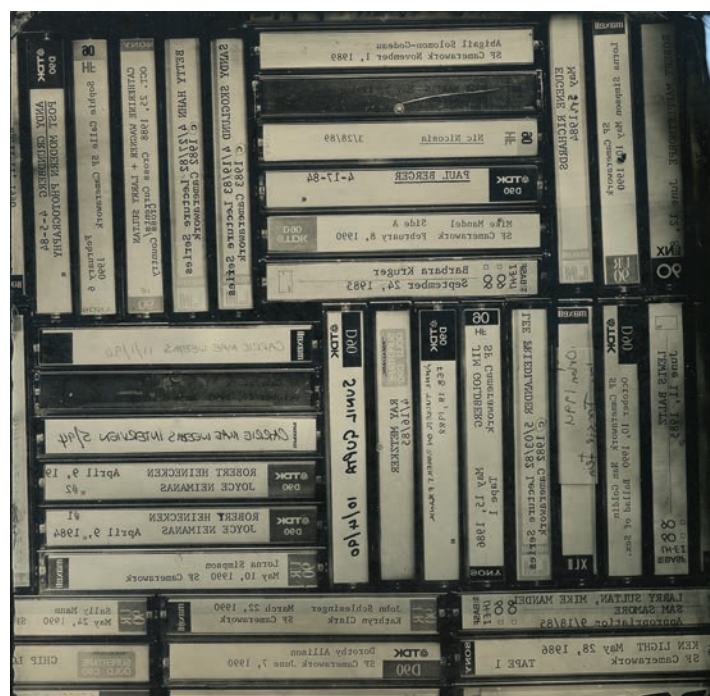
Swarm No. 103-12; 2014; gelatin silver print; 16 x 20 in; edition 2/5; signed on verso; \$2,000. Donated by the artist.

LOT 24 ELENA DORFMAN

Empire Falling 4, 2012; 2012; digital inkjet print; 13 1/4 x 21 in; signed on verso; \$2,500. Donated by the artist and Modernism, San Francisco, CA.

LOT 26 LARRY FINK

Fey at Play, Picking Her Brain; 2008/2013; inkjet print; 11 x 11 in; edition 1/25; [\$5,000]. Donated by the artist.



LOT 30



LOT 31



LOT 35



LOT 36



LOT 32



LOT 33



LOT 34



LOT 37



LOT 38

LOT 30 JEANNE FRISCIA
Untitled (SF Camerawork); 2014;
 ambrotype; 10 x 10 in; unique plate;
 signed on verso; \$800. Donated by the
 artist.

LOT 31 CYNTHIA GANO-LEWIS
Untitled; 1982; gelatin silver print;
 20 x 16 in; signed on verso; \$1,050.
 Donated by Ken & Melanie Light.

LOT 33 CHARLES GATEWOOD
Mardi Gras, NOLA, 1976; 1976/1980;
 RC print; 8 1/2 x 6 1/2 in; label and
 photographer's stamp on verso; \$950.
 Donated by the artist and Robert Tat
 Gallery, San Francisco, CA.

LOT 32 MICHAEL GARLINGTON
Nun with Cardboard Cross; 2014;
 gelatin silver print; 24 x 20 in; signed
 on verso; Works, San Francisco,
 CA. \$1,200. Donated by the artist.

**LOT 34 CANDACE PLUMMER
 GAUDIANI**
0763 from Forty Eight States II; 2009;
 archival pigment ink on rag paper;
 20 x 13 1/2 in; edition 2/5; \$1,200.
 Donated by the artist and Electric
 Works, San Francisco, CA.

LOT 35 RALPH GIBSON
Untitled; 1974/1978; gelatin silver
 print; 14 x 11 in; AP; signed on print;
 \$3,500. Donated by Thomas V. Meyer.

LOT 38 JOHN GOODMAN
Phone Booth/Truro 1980; 1980/2012;
 archival pigment print; 15 3/4 x 20
 in; AP1; signed on print; [\$2,200].
 Donated by the artist and Scott
 Nichols Gallery, San Francisco, CA.

LOT 36 RICHARD GILLES
Real Dinosaur Teeth; 2010; inkjet print;
 18 x 54 in; edition 1/5; signed on
 verso; \$3,000. Donated by the artist.

LOT 37 LYLE GOMES
*Living with the Horizon: Pedro Point,
 Pacifica, California*; 2013; gelatin silver
 print; 7 x 19 in; edition 6/25; signed
 on front; \$1,000. Donated by the
 artist and Saret Gallery, Sonoma, CA.



LOT 39



LOT 40



LOT 41



LOT 44



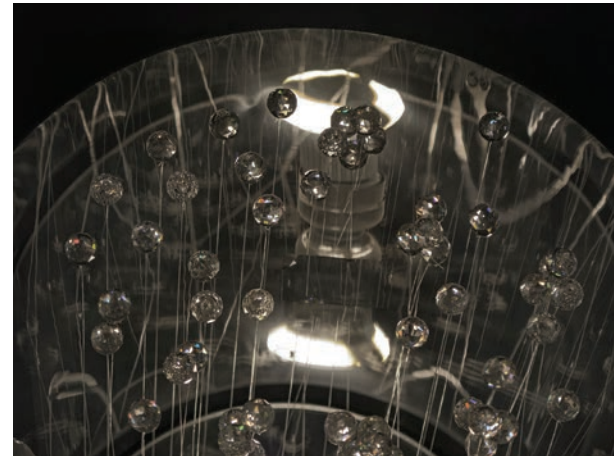
LOT 45



LOT 46



LOT 42



LOT 43



LOT 47



LOT 48



LOT 49

LOT 39 DAVID GRAHAM
E.M. Burkhart, Riverview, FL;
1993/1994; chromogenic print; 10
1/2 x 10 1/2 in; signed on verso;
\$1,500. Donated by the artist and
Gallery 339, Philadelphia, PA.

LOT 40 DOUG HALL
*Girl with the Leopard Skin Purse, San
Francisco;* 2010/2014; pigment
print; 15 x 12 1/2 in; signature label;
\$2,200. Donated by the artist.

LOT 42 JAMIL HELLU
Shopping Cart - Balls; 2014; digital
pigment print; 20 x 16 in; edition
2/10; signed on verso; \$400. Donated
by the artist.

LOT 41 JESSICA TODD HARPER
*Adam with Mary Ann, Marshall, and
Becky;* 2012/2014; inkjet print; 20
x 14 1/2 in; edition 1/10; signed on
verso; \$2,000. Donated by the artist
and Rick Wester Fine Art, New York, NY.

LOT 43 GERMAN HERRERA
Anemona; 2014; pigment print; 12
x 16 in; AP; signed on front; \$1,000.
Donated by Deborah Rodriguez.

LOT 44 MARY DANIEL HOBSON
Sanctuary #6; 2008; archival pigment
print; 16 1/2 x 11 in; edition 4/10;
signed on front and on verso; \$800.
Donated by the artist and Modernbook
Gallery, San Francisco, CA.

LOT 47 ALFREDO JAAR
Six Seconds; 2000; pigment print; 19
x 13 in; AP; signed on front; \$3,000.
Donated by the artist and Galerie
Lelong, New York, NY.

LOT 45 DON HONG-OAI
To Visit her Mother, Guilin; 1986; iris
print on watercolor paper; 10 1/2
x 13 1/2 in; signed on front; \$200.
Donated by Jane Reed.

LOT 48 JASON KALOGIROS
*Transamerica (Heads I Win/Tails You
Lose);* 2013; unique chromogenic
photograph; 14 x 11 in; signed on
verso; \$2,000. Donated by the artist.

LOT 46 ROLFE HORN
Ocean Beach, San Francisco, CA; 2014;
toned gelatin silver print; 10 1/2 x 10
1/2 in; edition 5/25; signed on front
and on verso; \$800. Donated by the
artist and Scott Nichols Gallery, San
Francisco, CA.

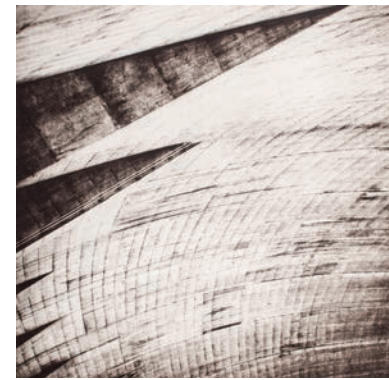
LOT 49 JENNIFER KARADY
*Former Sergeant John Holman,
U.S. Army, 82nd Division;* 2010;
chromogenic color print; 12 5/16 x 12
5/16 in; edition 4/15 AP; signed on
label; \$1,000. Donated by the artist.



LOT 50



LOT 51



LOT 52



LOT 55



LOT 56



LOT 53



LOT 54



LOT 57



LOT 58



LOT 59

LOT 50 ADAM KATSEFF

Frederic Church's Studio, Olana, New York; 2013/2014; archival pigment print; 16 x 20 in; AP; signed on verso; \$2,000. Donated by the artist and Sasha Wolf Gallery, New York, NY.

LOT 51 MICHAEL KENNA

Seaweed Farms, Study 10, Xiapu, Fujian, China; 2010/2014; sepia toned gelatin silver print; 8 x 8 in; edition 6/45; signed on front and on verso; \$2,500. Donated by the artist and Stephen Wirtz Gallery, San Francisco, CA.

LOT 53 MONA KUHN

James Franco, Chateau Marmont, 2012; 2012/2014; gelatin silver print; 16 x 20 in; signed on verso; [\$6,000]. Donated by the artist and Edwynn Houk Gallery, New York, NY.

LOT 52 STEFAN KIRKEBY

Hoover Dam; 2004; gravure; 10 x 10 in; signed on front; \$600. Donated by the artist and Smith Anderson North, San Anselmo, CA.

LOT 54 JENNA KUIPER

Once Twins 6 & Origin Story 2; 2014; 2 unique photograms; 9 1/4 x 7 3/4 in and 12 x 13 in; signed on verso; \$1,700. Donated by Traywick Contemporary, Berkeley, CA.

LOT 55 CHARLES LABELLE

Driftworks: Miami (Carey Motel); 2004; compound photograph; 11 1/2 x 12 in; signed on verso; \$1,800. Donated by Traywick Contemporary, Berkeley, CA.

LOT 58 ALEXIS MACKENZIE

Heron Aquarium; 2003; hand-cut collage on found paper; 9 x 12 in; unsigned; \$200. Donated by Jane Reed.

LOT 56 JOEL LEIVICK

Old Brewery, New Haven, CT; 1979/1981; gelatin silver print; 8 x 10 in; signed on verso; \$1,000. Donated by the artist.

LOT 59 VIVIAN MAIER

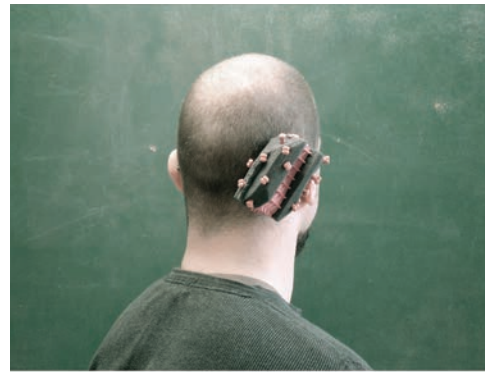
Wilmette, IL (Two Girls in Swimsuits Looking Down); 1968/2012; gelatin silver print; 12 x 12 in; edition 2/15; signed on back by printer and collection owner; \$2,200. Donated by Jeffrey Goldstein & Vivian Maier Prints Inc.

LOT 57 JESSAMYN LOVELL

First Mother's Day Flowers, 2013; 2013/2014; archival inkjet print; 11 x 14 in; edition 4/20; signed on verso; \$250. Donated by the artist.



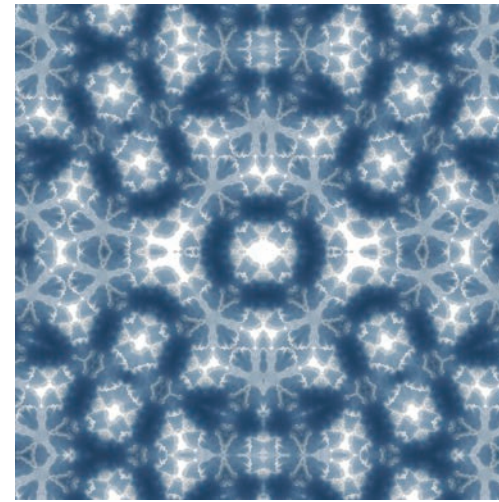
LOT 60



LOT 61



LOT 62



LOT 65



LOT 66



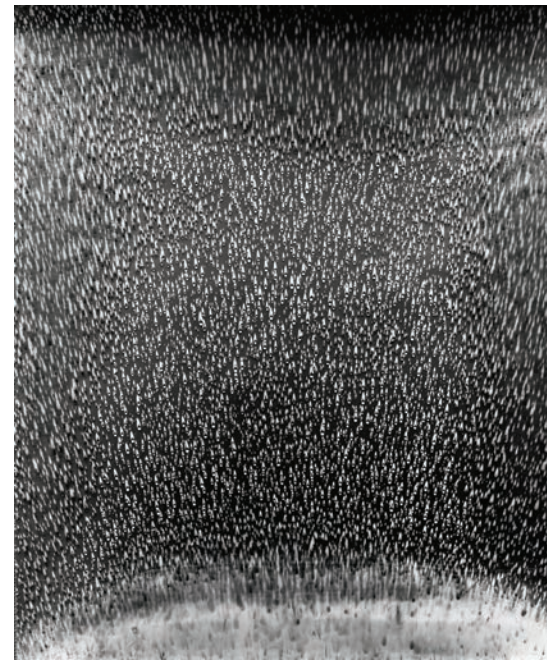
LOT 68



LOT 63



LOT 64



LOT 67



LOT 69

LOT 60 KERRY MANSFIELD
Concord Bridge, Withdrawn Stamp; 2013/2014; archival pigment print; 20 x 24 in; edition 1/2 AP; signed on verso; \$1,500. donated by the artist.

LOT 61 DARRIN MARTIN
Untitled (pink nose); 2010/2014; archival pigment print; 16 x 12 in; edition 3/10; signed on verso; \$800. Donated by the artist.

LOT 63 REBECCA MARTINEZ
August; 2007/2014; metallic print; 8 x 12 in; AP; signed on verso; \$850. Donated by the artist and Robert Tat Gallery, San Francisco, CA.

LOT 62 DANIEL JOSEPH MARTINEZ
Magic Outlet; 2013; pigment print on Canson Infinity Baryata; 13 1/2 x 24 in; edition 5/10; signed on verso; \$2,500. Donated by the artist and Roberts & Tilton, Culver City, CA.

LOT 64 PETE MAUNEY
Fireflies, Madison Hills, Viewmont, NY; 2014; archival pigment print; 11 x 16 1/2 in; signed on verso; \$700. Donated by the artist.

LOT 65 SANAZ MAZINANI
Bernal Heights; 2013; from series *Forever in the Sky*; pigment print; 19 3/4 x 19 3/4 in; edition 1/5; signed on verso; \$2,000. Donated by the artist and Stephen Bulger Gallery, Canada.

LOT 68 LEIGH MERRILL
Airy Street; 2009; archival pigment print; 24 x 40 in; edition 1/7; signed on label; [\$1,500]. Donated by the artist and Liliana Bloch Gallery, Dallas, TX.

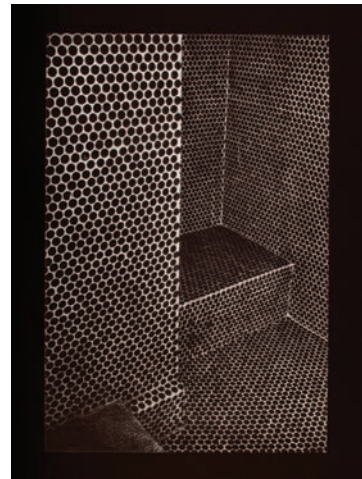
LOT 66 CHRIS McCAW
Detail #1, Grandma's home, Manteca, CA 2004; 2004/2005; platinum/palladium direct contact print; 7 x 17 in; edition 1/15; signed on front; \$1,200. Donated by the artist and Yossi Milo Gallery, New York, NY.

LOT 69 MARGARETTA K. MITCHELL
Gathering Sunflowers; 2003/2009; archival pigment print; 12 x 12 in; signed on front; \$800. Donated by the artist.

LOT 67 KLEA McKENNA
Rain Study, KONA #42; 2014; unique gelatin silver photogram; 24 x 20 in; signed on verso; \$3,000. Donated by the artist and Von Lintel Gallery, Los Angeles, CA.



LOT 70



LOT 71



LOT 72



LOT 76



LOT 77



LOT 78



LOT 73



LOT 74



LOT 75



LOT 79



LOT 80

LOT 70 BARBARA MORGAN
José Limón, Chaconne; 1945; gelatin silver print; 20 x 16 in; signed on front; \$3,500. Donated by Scott Nichols Gallery, San Francisco, CA.

LOT 71 DAIDO MORIYAMA
How To Create a Beautiful Picture; 1986/2013; copper plate gravure; 13 x 10 in; signed on front; \$800. Donated by Smith Anderson North, San Anselmo, CA.

LOT 72 RICHARD NAGLER
Irises/Vincent Van Gogh/Getty Museum; 2012; archival inkjet print on Hahnemuhle paper; 12 1/2 x 19 in; AP; signed on front; \$1,200. Donated by the artist and George Krevsky Gallery, San Francisco, CA.

LOT 76 DAVID PACE
Untitled (Sur la Route 1586); 2012/2013; archival pigment print; 24 x 17 in; signed on verso; \$900. Donated by the artist and Corden Potts Gallery, San Francisco, CA.

LOT 77 ADRIENNE PAO & ROBIN LASSER
Edible Garden Dress Tent; 2012/2014; chromogenic print; 36 x 30 in; edition 3/15; signed on verso; \$1,200. Donated by the artists.

LOT 78 OLIVIA PARKER
Flower and Nut; 2013/2014; pigment print; 18 x 12 in; edition 1/10; signed on front; \$1,500. Donated by the artist and Robert Klein Gallery, Boston, MA.

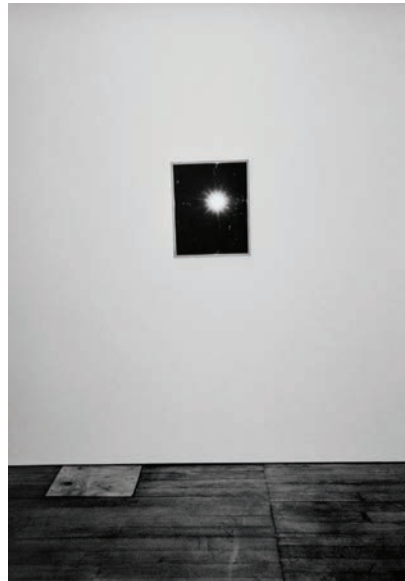
LOT 73 SARAH NEWMAN
The end of belonging; 2012/2014; pigment ink on paper; 12 x 16 in; edition 6/10; signed on verso; \$600. Donated by the artist.

LOT 74 BEN NIXON
Mount Tamalpais Landscape; 2008; toned gelatin silver print from glass plate; 16 x 20 in; edition 2/15; signed on verso; \$1,650. Donated by the artist and Smith Anderson North, San Anselmo, CA.

LOT 75 ABNER NOLAN
Untitled; 2009; from series *Away*; chromogenic print; 20 x 16 in; signed on verso; \$1,200. Donated by the artist.

LOT 79 RACHEL PHILLIPS
Fixed Glasses; 2013; encaustic on wood panel; 12 x 12 in; edition 1/8; signed on verso; \$500. Donated by the artist and Jack Fischer Gallery, San Francisco, CA.

LOT 80 MIMI PLUMB
Card Game; 1975/2014; from series *Pictures from the Valley*; archival ink jet print from film; 16 x 10 in; signed on verso; \$1,000. Donated by the artist.



LOT 81



LOT 82



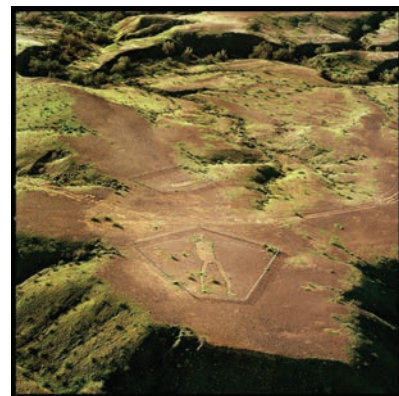
LOT 86



LOT 87



LOT 83



LOT 84



LOT 85



LOT 88



LOT 89

LOT 81 MAGGIE PRESTON

In Situ I; 2012; gelatin silver print; 19 1/2 x 13 1/2 in; edition 2/3; signed on mount; \$1,000. Donated by the artist.

LOT 82 MICHAEL PRINCE

Red Shoes; 2006/2013; archival pigment print on Baryta paper; 17 x 20 in; edition 1/12; signed on front; \$1,000. Donated by the artist and Cassilhaus Gallery, Chapel Hill, NC.

LOT 84 MICHAEL RAUNER

Blythe Geoglyph, Blythe; 2005/2007; from series *Visionary State: A Journey through California's Spiritual Landscape*; archival pigment print on paper; 16 x 16 in; edition 3/25; signed on verso; \$800. Donated by the artist and Scott Nichols Gallery, San Francisco, CA.

LOT 83 J. JOHN PRIOLA

Nature: Italian Cypress #1 (maquette); 2014; archival pigment print; 17 1/2 x 14 1/5 in; signed on verso; \$1,250. Donated by the artist and Gallery Paule Anglim, San Francisco, CA.

LOT 85 MEGHANN RIEPENHOFF

Darkmatter #31; 2009; unique chromogenic photogram; 20 x 16 in; signed on verso; \$2,300. Donated by the artist.

LOT 86 HERB RITTS

Merce Cunningham - Detail, New York 1991; gelatin silver print; 20 x 16 in; edition 8/25; signed on verso; [\$6,000]. Donated by the Herb Ritts Foundation, Los Angeles, CA.

LOT 89 ARI SALOMON

Bathroom Scene (Mirror), October 2005; 2005/2013; pigment print; 17 x 24 in; edition 1/10; signed on verso; \$350. Donated by the artist.

LOT 87 HOLLY ROBERTS

Doll with Red; 2011; mixed media; 10 x 8 in; signed on front; \$1,800. Donated by the artist.

LOT 88 LISA ROBINSON

Ruigahuizen; 2010/2014; chromogenic print; 11 x 14 in; edition 5/5; signed on verso; \$500. Donated by the artist.



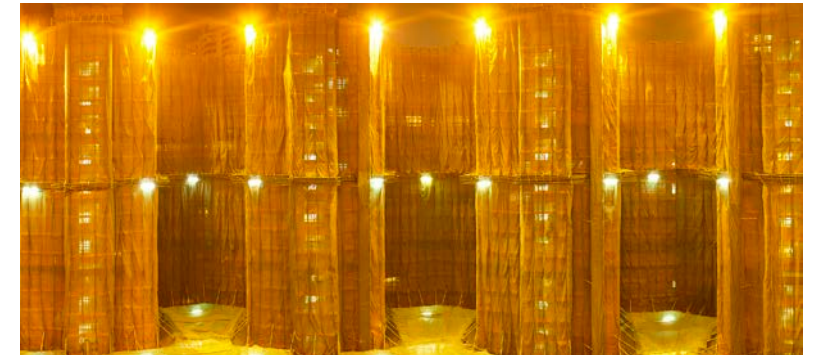
LOT 90



LOT 91



LOT 96



LOT 98



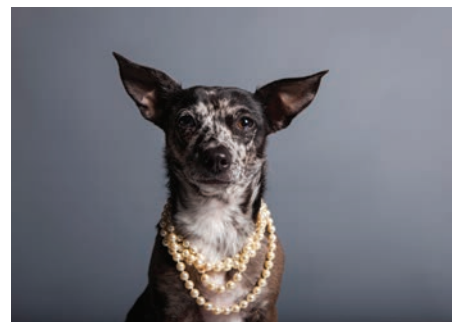
LOT 92



LOT 97



LOT 101



LOT 93



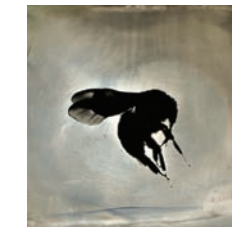
LOT 94



LOT 95



LOT 99



LOT 100

LOT 90 UNAI SAN MARTIN

Gran Via #7; 2004; photogravure; 12 x 9 in; AP; signed on front; \$500. Donated by the artist.

LOT 91 PAUL SCHIEK

Franklin; 2012; chromogenic print; 16 x 12 in; unsigned; \$1,200. Donated by the artist and Stephen Wirtz Gallery, San Francisco, CA.

LOT 92 ALICE SHAW

Stand; 2013; archival pigment print with 22 carat gold leaf; 10 1/4 x 15 1/4 in; edition 2/2; signed on verso; \$1,000. Donated by the artist and Gallery 16, San Francisco, CA.

LOT 96 NEAL SLAVIN

Portugal; 1968/1978; from portfolio *Ten Photographers, Women's Campaign Fund, 1978*; gelatin silver print; 6 1/8 x 9 3/8; edition 39/75; signed on front; \$1,100. Donated by Susan Herzig & Paul Hertzmann, Paul Hertzmann, Inc.

LOT 97 JEFF SMITH

Beyond9 Organ Pipe; 1990/2014; archival ink print; 20 x 20 in; edition 6/25; signed on verso; \$800. Donated by the artist and Etherton Gallery, Tucson, AZ.

LOT 98 PETER STEINHAEUER

Grenville House Cocoon, Hong Kong, 2009; archival pigment print; 22.75 x 45.5 in; AP; signed on front; \$5,300. Donated by the artist.

LOT 93 ELLEN SHERSHOW-PEÑA

Dog #34; 2014; digital print; 14 x 11 in; edition 2/5; signed on verso; \$500. Donated by the artist.

LOT 94 MALICK SIDIBE

Christmas Eve; 1968/2014; copper plate gravure; 8 x 8 in; unsigned; \$650. Donated by the artist and Smith Anderson North, San Anselmo, CA.

LOT 95 RADEK SKRIVANEK

Photographer's Studio, Photosalon Didar, Aralsk, Kazakhstan; 2004/2008; gelatin silver print; 16 x 20 in; signed on verso; \$1,000. Donated by the artist.

LOT 99 LIZ STEKETEE

Sewn #6; 2014; archival prints from composites and thread; 5 x 5 in; edition 1/3; signed on verso; \$450. Donated by the artist and Stephen Cohen Gallery, Los Angeles, CA.

LOT 100 S. GAYLE STEVENS

Disappearance; 2014; wet plate collidion ambrotype photographs; 2 x 2 in; signed on verso; \$500. Donated by the artist.

LOT 101 YOUNGSUK SUH

Untitled (YNP215); 2009/2010; archival pigment print; 36 x 46 in; edition 1/5; signed on verso; \$4,000. Donated by the artist.



LOT 102



LOT 103



LOT 104



LOT 107



LOT 108



LOT 105



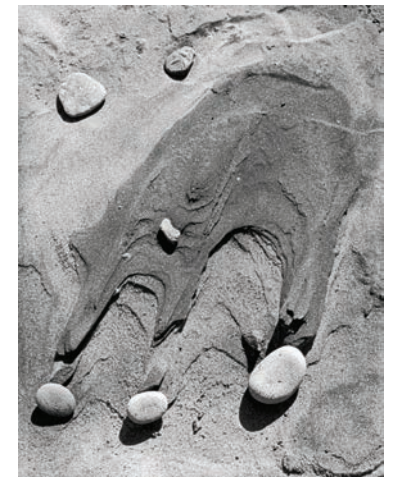
LOT 106



LOT 109



LOT 110



LOT 111

LOT 102 KRISTINA VARAKINSA

Aspiration, #1; 2012; inkjet print; 29 1/2 x 23 1/2 in; edition 1/10; signed on front; \$1,500. Donated by the artist and Modernbook Gallery, San Francisco, CA.

LOT 103 RIKKI WARD

Postcards from Home; 2014; archival prints on fine art rag; 7 x 5 in; signed on mount; \$250. Donated by the artist.

LOT 105 HIROSHI WATANABE

Genki, Suo Sarumawashi; 2008/2009; toned gelatin silver print; 10 x 10 in; edition 1/30; signed on verso; \$1,000. Donated by the artist and Jenkins Johnson Gallery, San Francisco, CA.

LOT 104 JAIMIE WARREN

Self-portrait as woman in Les Femmes d'Avignon by Pablo Picasso/ Online Deceptions by MommaBird; 2012; chromogenic print; 30 x 40 in; edition 3/5; signature label; \$2,500. Donated by the artist.

LOT 106 FREDERIC WEBER

Untitled No. 12; 2012/2013; archival pigment print; 16 x 20 in; edition 2/20; signed on print; \$1,200. Donated by the artist and Klompching Gallery, Brooklyn, NY.

LOT 107 WILLIAM WEGMAN

The Wave; 2005/2014; pigment print; 11 x 8 1/2 in; edition 9/30; signed on front; \$750. Donated by the artist.

LOT 110 BETH YARNELLE-EDWARDS

John; 2000/2014; chromogenic print on Fuji Crystal archive paper; 20 x 24 in; edition 13/25; signed on verso; \$2,000. Donated by the artist.

LOT 108 EDWARD WESTON

Point Lobos; 1930/c.1950; silver print; 7 5/8 x 9 5/8 in; unsigned, annotated in pencil by Dody Weston; \$2,500. Donated by Susan Herzig & Paul Hertzmann, Paul Hertzmann, Inc.

LOT 111 MITSU YOKISHARA

Stones, Wind and Sand; 2010/2012; gelatin silver print; 14 x 11 in; signed on front; \$300. Donated by the artist.

LOT 109 REID YALOM

Cathedral Door, Vietnam; 2010/2011; film-based selenium toned gelatin silver print; 20 x 16 in; edition 6/30; signed on front; \$1,100. Donated by the artist and Dolby Chadwick Gallery, San Francisco, CA.

2014 MEMBERSHIP FINE PRINT PROGRAM

The Membership Fine Print Program is a smart and fun way to show your support of SF Camerawork while building your own photography collection. As a gift of membership at the Collector Level and above, you will receive a limited edition, signed, photographic print produced especially for SF Camerawork.

To become a member, please visit www.sfcamerawork.org/fineprintprogram



CHRISTINA SEELY

Lux, Metropolis 37°46'N122°26'W (San Francisco), 2005-2010, Archival Inkjet Print, 16 x 20." Edition of 10.

This image of the artificial glow produced by the San Francisco skyline is from Seely's *Lux* series, which presents photographic portraits of forty-five cities that lie in the most brightly illuminated regions of the NASA night earth map. The image depicts exclusively man-made light, captured through long exposure with a 4x5 large format field camera. Seely's expedition-based work finds its home in the conversation between the photographic image and the complexities of our contemporary relationship to nature and time.

Offered at \$1200 Benefactor Level Membership



ABSENTEE BID FORM

As a service to bidders who are unable to attend the sale, SF Camerawork will enter their absentee bid, subject to the Conditions of Sale on page 3. All lots will be purchased at the lowest possible price subject to any reserve price and other bids, and never more than the top amount indicated by the bidder.

Use this form or facsimile as an order bid and send it to SF Camerawork via email, fax, or mail. Completed forms may be given to the gallery staff during the preview exhibition. All purchases must be paid for upon notification of purchase. Please place your bids as early as possible. In the event of identical bids, the earliest received will take precedence. For more information or to place an absentee bid by phone, please call during exhibition hours, Tuesday through Saturday, Noon to 6:00 pm (PST).

Please note: SF Camerawork offers this service freely and confidentially, and will not be responsible for error or failure to execute bids.

Name _____

Address _____

City _____ State _____ Zip _____

Mobile _____ Home _____

Credit Card # _____

Expiration Date _____ 3-Digit Security Code _____

Billing ZIP Code _____ Resale # (if applicable) _____

I would like to donate \$_____ to SF Camerawork.
Please use my payment information above for this 100% tax-deductible donation.

Artist Name/Title _____

Lot. no. _____ Top limit of bid _____

Artist Name/Title _____

Lot. no. _____ Top limit of bid _____

Artist Name/Title _____

Lot. no. _____ Top limit of bid _____

Artist Name/Title _____

Lot. no. _____ Top limit of bid _____

Artist Name/Title _____

Lot. no. _____ Top limit of bid _____

Signature _____ Date _____

By signing this I agree to be bound by the Conditions of Sale included with this catalog

SF Camerawork, 1011 Market Street, 2nd Floor, San Francisco, CA 94103-1605
telephone: 415.487.1011 fax: 415.487.1010 email: info@sfcamerawork.org

SF Camerawork Contributors:

Robert Adams
Ara Ahadi
Dave Anderson
Erik Auerbach
Rachel Baker
Jane Baldwin
Roger Ballen
Rachel Barrett
Baum Foundation
Bay Area Photographers Collective
Black Dog Private Foundation
Sharon Bliss
Debra Bloomfield
Jennifer Brandon
Dan Burkholder
Susan Burnstine
Julie Casemore
Catherine Couturier Gallery
Mark Chambers
Rick Chapman
Abby Chen
John Chiara
Sarah Christianson
Mark Citret
Daniel Coburn
Christopher Colville
Linda Connor
Corden Potts Gallery
Jason Criss
Binh Danh
Judy Dater
Scott B. Davis

Robert Dawson
Janet Delaney
Monica Denevan
Amanda Doenitz
Dolby Chadwick Gallery
Elena Dorfman
Edwynn Houk Gallery
Electric Works
Etherton Gallery
Fahey Klein Gallery
Lukas Felzmann
Angela Buenning Filo
Courtney Fink
Hal Fischer
Five Senses Food/Miki Johnson
Fraenkel Gallery
Andy Freeberg
Jeanne Friscia
Galerie Lelong
Gallery 16
Gallery 339
Gallery Paule Anglim
Derek Gardner
Michael Garlington
Charles Gatewood
Candace Plummer Gaudiani
General Graphics
Erika Gentry
George Krevsky Gallery
Richard Gilles
Jeffrey Goldstein
Lyle Gomes
Lucy Goodhart
John Goodman
Craig Goodman
David Graham

Ursula Gropper
John P. Grossman
Rani Gupta
Haines Gallery
Doug Hall
Jamil Hellu
Jessica Todd Harper
Bernardo Hernandez
Germán Herrera
Susan Herzig and Paul Hertzmann
Mary Daniel Hobson
Hobson Family Foundation
Ken Hoffman
Rolfe Horn
W.M. Hunt
Alfredo Jaar
Jack Fischer Gallery
Ann Jastrab
Rupert Jenkins
Jenkins Johnson Gallery
Jason Kalogiros
Jeffrey Kanbar
Jennifer Karady
Katie Powers Catering
Adam Katseff
Michael Kenna
Jessica Kennedy
Stefan Kirkeby
Klompching Gallery
Frank Konhaus
Mona Kuhn
Jenna Kuiper
Charles Labelle
Robin Lasser
Joel Leivick
Ken and Melanie Light

Lilliana Bloch Gallery
Alexander Lloyd
Lot 21 Gallery
Jessamyn Lovell
David Mahoney
Kerry Mansfield
Daniel Martinez
Rebecca Martinez
euforia Mason
Pete Mauney
Sanaz Mazinani
Chris McCaw
Hesse McGraw
Klea McKenna
Leigh Merrill
Thomas Meyer
Susan Miller
Karla Milosevich
Richard & Myriam Misrach
Margaretta K. Mitchell
Chuck Mobley
Modernbook Gallery
Modernism
RJ Muna
Richard Nagler
Kimi Needham
Sarah Newman
Scott Nichols
Ben Nixon
Abner Nolan
Brent Nuñez
Erin O'Toole
David Pace
Tony Page
Rosa Page
Adrienne Pao

Olivia Parker
Rachel Phillips
Photogallery Oakland
Mimi Plumb
Maggie Preston
Michael Prince
J. John Priola
Michael Rauner
Jane Levy Reed
Rena Bransten Projects
Meghann Riepenhoff
Arny Riggins
Robert Klein Gallery
Robert Koch Gallery
Holly Roberts
Lisa Robinson
Diane Rosenblum
Matthew Roth
Ari Salomon
Unai San Martin
Saret Gallery
Sasha Wolf Gallery
Paul Schiek
Doreen Schmid
Scott Nichols Gallery
Christina Seely
Alice Shaw
Ellen Shershow-Peña
Liza Siegler
Beau Simon
Radek Skrivanek
Jeff Smith
Minna Smith
Smith Andersen North Gallery
Peter Steinhauer

Liz Steketee
Stephen Cohen Gallery
Sterling Art Services
S. Gayle Stevens
Youngsuk Suh
The Herb Ritts Foundation
The Yellow Chair Foundation
Traywick Contemporary
Kristina Varakinsa
Von Lintel Gallery
Judy Walgren
Rikki Ward
Jaimie Warren
Hiroshi Watanabe
Frederic Weber
William Wegman
Rick Wester
Weston Gallery
Blair Winn
Connie and Stephen Wirtz
Kirsten Wolfe
Reid Yalom
Frank Yamrus and Lucas Delabos
Beth Yarnelle Edwards
Yossi Milo Gallery
*and the invaluable support of
all our members*



The Andy Warhol Foundation for the Visual Arts





1011 Market Street, 2nd Floor
San Francisco, CA 94103
415.487.1011
info@sfcamerawork.org
www.sfcamerawork.org

www.sfcamerawork.org