

Good Shepherd Episcopal Church
Hayesville, NC

2011 Annual Report

presented at

Annual Parish Meeting
January 29, 2012

Vestry

Term expiring January 2012

Harry Baughn, Senior Warden
Kay Covode
Jane Oliver

Term expiring January 2013

Brad Rouse
Betsi Wilson
Linda Wingo

Term expiring January 2014

Mike Lee
Joe Rybicki, Junior Warden
Anne Wolf

Lynne Joynes – Clerk
Elizabeth Rybicki – Treasurer

The Rev. John Rice, Rector
The Rev. Turner Guidry, Deacon

Good Shepherd Episcopal Church

ANNUAL MEETING

January 29, 2012

9:15 a.m. – 10:30 a.m.

Agenda

Opening Prayer

Approval of Minutes of 2010 Annual Meeting held on January 23, 2011

Announcement of Vestry Election and Commissioning of Vestry

Senior Warden's Report

Junior Warden's Report

Treasurer's Report

Rector's Report

Gifts of Appreciation

Building Overview and Status

Questions and Discussion

Be thou my vision (inside back cover)

Closing Prayer

Almighty Father, whose blessed Son before his passion prayed for his disciples that they might be one, as you and he are one: Grant that your Church, being bound together in love and obedience to you, may be united in one body by the one Spirit, that the world may believe in him whom you have sent, your Son Jesus Christ our Lord; who lives and reigns with you, in the unity of the Holy Spirit, one God, now and forever. Amen

TABLE OF CONTENTS

Report	Page
Statistics	1
Minutes of Annual Meeting January 24, 2010	1
Rector's Report	3
Senior Warden's Report	3
Junior Warden's Report	4
Deacon's Report	5
Director of Christian Education's Report	5
Treasurer's Report	7
Finance Committee	15
Annual Budget	16
Altar Guild	18
Alternative Christmas Shopping	18
Bereavement Hospitality	18
Blood Drive	18
Building Construction Committee	18
Celebration of Arts & Spirituality	19
Chancel Choir	19
Children's Church	20
Coffee Hour	20
Communications	21
Country Fare	21
Cursillo/Ultreya	21
Daughters of the King	21
DeSoto Square	22
Flower Guild	22
Grazers	22
Green Team	22
HouseRaising Volunteers	23
Intercessory Prayer Team	23
Joyful Noise	23
Landscaping and Grounds	23
Lay Eucharistic Visitors	23
Lay Ministries	24
Lectors/Prayers	24
Library	24
Meals for Friends	24
Memorial Garden	24
Men's Association	24
Mountain of Faith Fund	25
Nursery	25
Office Volunteers	25
Order of St. Luke	25
Outreach Committee	26
Parish Life	26
Pastoral Care	26
Prayer Chain	26
Prayer Shawl Ministry	27
School Bags for Kids	27
Sexton	27

Shrove Tuesday Pancake Supper	27
Stephen Ministry	28
Stewardship	28
Ushers and Oblation Bearers	28
Wedding Coordination	28
Welcoming/Greeters and Newcomers	28

2011 Statistics

Services:

Holy Eucharist:	161
Sundays	104
Weekdays	57
Average Sunday Attendance	167
Private Eucharists	137
Marriages	0
Burials	4
Other	59

Membership:

Baptized	4
Confirmed/Received	0
Baptisms Recorded	3
Communicants Transferred In	4
Communicants Restored from Inactive Status	5
Communicants Transferred Out	8
Deaths	3
Communicants Moved to Inactive Status	10

Communicants in Good Standing 258

Additional active members whose confirmation, baptism, or transfer were not recorded 103

Total Active Members (representing 201 households) 361

Minutes of 2010 Annual Parish Meeting – Held January 23, 2011

The Annual Meeting of Good Shepherd Episcopal Church was opened with prayer at 9:20 a.m. by the Rev. John Rice, Rector, in the nave. The attendance was approximately 60.

MINUTES for the Annual Meeting held on January 24, 2010 were approved as written.

NEW VESTRY MEMBERS were announced. Elected were Mike Lee, Joe Rybicki and Anne Wolf. They were commissioned to serve for the coming year by Fr. John along with the returning vestry members.

SENIOR WARDEN'S REPORT – Sam Oliver opened by saying he looks forward to next year in the new parish hall which he hopes is filled to overflowing. He referred everyone to his written report.

After he submitted his annual report the vestry held their annual retreat. Items of note from the retreat are:

- The #1 goal is to optimize the use of space. The new facilities are to be used to fulfill the mission of the church.
- A demographic study is being conducted and can be completed online.
- An Arts and Spirituality Festival will be held starting on March 12. It will be an opportunity for members of the parish to get to know each other as well as outreach to the community.

He concluded his remarks by saying what a pleasure it has been to be Senior Warden, thanking the retiring vestry members, welcoming the new members and reminding everyone that vestry meeting are open to anyone who wants to attend.

JUNIOR WARDEN'S REPORT – Harry Baughn reported that the main function for Junior Warden is the physical plant. In the past year most issues with that have been covered by building construction committee. The existing church has benefited from added insulation in the past year. Harry thanked Paul Jordan who is retiring from the role for his service as sexton.

TREASURER'S REPORT – Elizabeth Rybicki reported that finances are in good order. There was a small shortfall in the

general fund due to very low attendance on the last Sunday of the year. Income and expenses were both under budget for 2010. Income to the Legacy fund has been coming in early allowing us to borrow less and more slowly than anticipated.

A loan and a grant each in the amount of \$25,000 were received from the diocese for the building project. The grant does not have to be repaid. The loan payments start in 5 years.

If anyone has questions about their contribution statements, please come by the office on Monday to discuss them.

INDIA MISSION TRIP – Kay Covode presented a map and itinerary of the upcoming mission trip and asked for prayers during the trip.

FINANCE COMMITTEE – Jim Reynolds discussed the 2011 budget. He is chair of the committee. The other committee members are Pat Fox, Helen Mulcahy, Elizabeth Rybicki and Doug Stuart as well as new members Linda Wingo and Jane Oliver. For the building, half of the amount budgeted is for new construction debt repayment and the other half is for maintenance of the old structure plus utilities. The committee wants pay raises for the staff. There were no raises in 2010 and less than 1% raises for 2011.

RECTOR'S REPORT – Fr. John Rice introduced staff members Mary Golnitz, Jerry Taylor, Bev Larson, Elizabeth Rybicki, Sue LeKites Carol Smucker and Lynne Joynes and thanked them.

He reviewed some of the ministries that the church is involved in such as DeSoto Square, REACH, Meals for Friends, St. Vincent de Paul and Hayesville House. He encouraged everyone to experience joy, restoration and renewal in order to be able to serve others.

He is glad to be the rector and is looking forward to the new year. He noted that the annual meeting had to be in the nave due to space restrictions. He thanked Dave Smucker for all of his work with the building project and Linda Wingo for her work with transition issues. He noted that with new space comes new challenges.

He discussed the fact that the painting and molding in the nave were gifts from Ron Cantrell. There will be new carpet in the nave that will be an extension of the carpet in the narthex. The nave carpet was not in the budget so he issued a call for help paying for it. Fr. John thanked Deanna DuBose and Mary Stewart King for their work on the interiors committee, Lou Lanwermeyer for his work on the capital campaign and those who have helped with the sweat equity projects.

Gifts of appreciation were given to the retiring vestry members. The gifts were made by Dave Smucker.

Paul Jordan was recognized for his work as Sexton and as chairman of the Building and Grounds committee. Deanna DuBose was recognized for her work as chair of Flower Guild. They were given crosses made by Bill Drew and gift certificates.

BUILDING EXPANSION UPDATE – The first event for the new parish hall will be the Pancake Supper on March 8. There is still work to do. A temporary certificate of occupancy for the restrooms is expected at the beginning of February. Once the new restrooms are in use the demolition of the old ones can begin for the multipurpose/vesting room that has been named the Dogwood Room. The belltower is being built with an additional anonymous gift.

QUESTIONS AND DISCUSSION

Pat Jordan thanked Deanna DuBose and Elizabeth Rybicki for their service on Altar Guild.

Jane Oliver discussed the Arts and Spirituality Festival and answered some questions about framing and paperwork.

Elizabeth Rybicki asked everyone who had made a prayer shawl to stand up and be recognized.

In the area of youth Barbara Lanwermeyer talked about Children's Church. Turner Guidry gave a report on the youth group which currently has about 20 high school students. The youth are planning a mission trip to Jamaica. Mary Golnitz thanked everyone for their support and recognized Barbara Lanwermeyer and Rachel Baughn for their work with Christian Education.

Sam Oliver noted that there were five functions after church the previous week which left everyone scrambling to find space. This church is in transition to a program church and more work needs to be taken on by lay leadership.

The meeting concluded at 10:30 am by singing *Be Thou My Vision* and with prayer.

Rector's Report

I am thankful for so much that has happened this past year, from the completion of our beautiful new facilities to the 'Living Waters' Garden', the first of several healing gardens to be created on our church grounds. But what I am most drawn towards, is giving thanks for the people of Good Shepherd.

I am thankful for the celebration of those baptized: Jennifer and Angela Golenski, Mark Corey, and Debbie Sanford; and most recently, Samuel Moral, Aimee Furlong, and Brontë Bigham; and soon to be baptized, baby Knowlton Lee. Welcome to the family of God and the journey of faith that we all share together!

I am thankful for the living legacies of those that have died, those special individuals that we continue to love but no longer see: Sam Oliver, Dottie Warnke, and Lou White. We miss them deeply. May the Lord continue to watch over them in God's heavenly kingdom and those that they love, still living in this earthly kingdom.

Baptism and death, both reveal the reality of new life. One brings tears of joy, the other tears of deep loss. Baptism leads us into a life within the body of Christ, one that we call Good Shepherd Episcopal Church. While death draws us into eternal life with the community of saints, where there is no pain nor sorrow, only intimate and joyful communion with our Lord.

We are all on the threshold of new life, as we get ready to say farewell as priest and parish. It will be an interesting year, a year filled with adventure, a time of uncertainties and perhaps some anxieties. As I ponder on the coming year for all of you, and for Debra and myself, I am drawn to the promise that we have all made at our baptism. To the question, "Do you put your whole trust in Jesus' grace and love?" we have responded with a heartfelt, "I do."

Living a Christian life requires trust and faith. As writer Max Lucado writes, "Faith is the conviction that God knows more than we do about this life and God will get us through it." I believe this to be a deep truth about the nature of God. Part of what this means is that God has a plan for each person and for each church. Our task is to listen and pray for God's plan to be revealed with clarity. Our responsibility, once we 'know' God's will for us, is to follow with an obedience characterized by faith and trust, courage and boldness, waiting and patience, love and forgiveness.

May the deep gentle power of God's Spirit breathe the gift of new life upon us throughout the coming year. And together may we lift up a song of thanksgiving for the journey that is ahead of us, and for the blessed eight years that we have had together! Thank you, Lord, for the blessing of being pastor and friend to so many at your Church of the Good Shepherd.

Fr. John

Senior Warden's Report

2011 has been a momentous year in the ongoing life of the Parish of the Good Shepherd. With the completion of one phase of our expansion project we opened the new Parish Hall with the first "Arts and Spirituality" Celebration. Under the leadership of Jane Oliver and Betsi Wilson, the God given talents of many of our parishioners and other local artisans were elegantly displayed to an appreciative crowd of both church members and many local residents.

The "Official" opening of the parish hall was held with Bishop Taylor in attendance and our contractor, Ron Cantrell, handing the keys to our beloved Senior Warden, Sam Oliver. It was on Sam's watch as Sr. Warden that the expansion project had been officially started in 2010 with many notable figures in attendance. Bishop Taylor along with some of our founding members such as Ellie Wilson, Ben Holt and others participated in that symbolic ground breaking.

Before the project was completed, Ellie left this earthly home, so it was another tremendous loss to our family when Sam Oliver was taken from us. We were so blessed to have had his tremendous leadership through such a critical stage. Sam's positive attitude and strong faith carried and strengthened us throughout the entire construction. It is he who should rightfully be writing this report. Through the generosity of a couple of parishioners, you will soon find a plaque in loving thankfulness of Sam mounted on the side of the new rock entranceway sign. Sam believed strongly that a welcoming sign was important part of inviting our community up the hill where they will be wrapped in God's love.

In addition to the new parish hall, Good Shepherd was also the beneficiary of a bell tower, generously funded by members of our congregation. Presently, construction – or rather remodeling – is underway in the Undercroft which will

primarily be a home for our youth to have a place of learning, growth, and fun. As with the major construction, this remodeling is under the watchful eye and guidance of Dave Smucker for which we are grateful.

2011 also saw the return of a community icon, the Country Fare. Though space changes brought modifications to the Fare, it was definitely a success, not only in terms of raising funds for outreach but also in introducing our improved facilities to local residents who might not otherwise have seen the inside of our church, or the outside for that matter. The living waters healing garden has been completed with beautiful trees, plants, waterfall and dry wash bed (and an occasional frog.)

The year included continued support of the Diocese of Durgapur, both financially and through prayer and medical ministry teams traveling to India from Good Shepherd. We feted Bishop Dutta and his wife who came for a luncheon with Good Shepherd members.

Mingled in with all of the wonderful things that happened in 2011, we did have to say good bye to several parishioners who needed to move away from our beautiful, but remote area. Even so, we have been blessed with many new and wonderful people whose presence has caused an 8% increase in our attendance over 2010.

We have now converted our construction loan to a permanent mortgage, with payments included in our 2012 budget. We are appreciative of the business acumen and generosity of some parishioners who realized that a reduction in our loan principal could save the parish thousands of dollars in interest. So they offered, and we accepted, an interest free loan that reduced the principal before we converted to the long term mortgage.

Our transition to new facilities is now complete. Now we face transition of leadership in 2012 as we enter the process of discerning who God will send to be our rector. After serving as our loving priest for 8 years, God has called John Rice to take a more active role in the North American Order of St. Luke, as well as establishing OSL in India. It is a calling that we fully support though it is painful to let go of a shepherd that has taken care of his flock over the years that we have journeyed together. We grieve the loss of our closeness with John while we also celebrate his new ministry.

Each and every person that reads this report is an integral part of our church family and, as such, your participation this coming year in the life of our church family is vital. We will explore who we are and what we hold as important to the life and spiritual vitality of Good Shepherd. Your input is crucial in this process of discerning, with God's help, the person who will continue a journey of all of the good things that have been developing these past 8 years

With much appreciation to a wonderful vestry that has allowed me to be along for the ride ☺

Harry Baughn, Blest to fill in the term of Sam Oliver, Sr. Warden

Junior Warden's Report

Our church family began 2011 watching the additions to our home finally taking shape and looking like part of the house. We opened the doors in March with our first official parish hall event, the annual Shrove Tuesday Pancake Supper hosted by our youngest family members. Then the Arts and Spirituality show filled the parish hall with over three hundred art creations that made the parish hall literally explode in color. After an April dedication with Bishop Taylor we now regularly put all our new spaces and facilities to good use. Over the year we have added beautiful new signs done by Bob Forbes, kept our Sexton Jerome Laux busy keeping the whole place running, taken advantage of Dave Smucker and countless other helpers to begin the renovation of the undercroft for our youth as well as putting seemingly endless finishing touches on the facility. The landscape committee put in the gardens you see all around out front thanks to Jake Ehrhart and many other worker bees and we cleaned up the memorial garden thanks to Paul Jordan and a few other dedicated keepers of that sacred space. Most recently you've probably noticed the beautiful stone entrance sign as you turn into the church. These pretty much complete the initial landscape architect designs. This leaves us with the labyrinth garden planned for under the trees out front and the healing garden above the parking lot to go. There are of course countless other finishing touches that have occurred but I would like to talk about a few facility operations items we all need to be aware of.

First I'd like to call your attention to our now official Facility Use Policies developed by the Vestry over the course of several months and much thought. Copies are available on the bulletin board, in the church office and on the web site. Its important that we be aware of restrictions we have in place on organizations who may use the parish hall, the

kitchen, etc. Also decisions on liquor use, borrowing church property like tables or kitchen items, kitchen use rules and allocating additional utility costs are just a few of the things your vestry felt were important to put down in writing from the outset. Please make referring to the Facility Use Policies part of any ministry or group event planning you may be involved in.

In addition I'd like to encourage our continued utilities stewardship. Of course Sunday lights and air is just the cost of doing business and not an issue here. Our utilities are now about 30 to 40% higher as you would expect in a facility of our size but not a financial burden at all. However, all of us might be surprised to know that one large event in the parish hall with full kitchen use and the facility lit up and aired up for that time adds approximately 100 dollars to our monthly electric bill. On a daily basis, trying not to leave the parish hall lights on all day helps and remembering that moving the thermostat a couple of degrees to cycle the system is all you need with all the new units anywhere in the building. Without dwelling on this issue, please use whatever you need for light and comfort, just think about being part time stewards of our house utilities. Most importantly enjoy what a great place it is because that's why we built it!

It has been a privilege to care for and thanks to everyone at Good Shepherd for your help keeping up Our Father's church family house.

Joe Rybicki, Jr. Warden

Deacon's Annual Report

We had a daring and wonderful year working with our youth. Our, first ever, mission trip to Jamaica was deeper and wider than any of us ever imagined it could be. Twenty-one of us ministered to the deaf community and hearing children for one week in the town of Mandeville, Jamaica through vacation Bible school and healing ministry. We were truly blessed in this mission. Our youth's spiritual growth and witness to God's power and generosity was astounding.

The faithfulness of Fr. John and of the congregation and vestry of Good Shepherd in the prayerful and financial support of this mission trip was truly humbling for our entire team. Thank you so much.

Our youth group, the LifeSavers, continues to meet weekly at Oak Forest UMC. An average of 15 youth attend regularly. The youth continue to do mission work monthly here in our home community through regular visits to the nursing home, assistance in maintenance projects for shut-ins, and in raising money for needy causes. The LifeSavers group is thriving and has plans to expand its ministry down into the middle grades. Another summer mission trip is in the works for this coming summer. As our youth space in the undercroft (basement) of Good Shepherd is developed, we expect to have many of our LifeSavers activities here at our church.

The Order of Saint George young men's breakfast is a weekly prayer breakfast for young men in the 8th through 12th grades. Average attendance is around 23 including fathers and mentors. The Order meets at HFR at 7am on Thursdays throughout the school year. The mission of the Order of Saint George is to raise up Christian young men as leaders within their schools and community and to promote prayer, study and witness among its members.

Thank you for the opportunity and honor to serve as your Deacon in this wonderful and blessed parish.

Turner Guidry, Deacon

Director of Christian Education's Report

"Come, all you who are thirsty, come to the waters." Isaiah 55:1

"Living Waters" was the theme for Advent Retreat held at the Hinton Center on December 3, 2011. It is also a theme that the parish is emphasizing in its ministries this year. The fountain at Good Shepherd is a constant reminder of "Living Waters" as we enter and exit the church building. God is present and gives new life to all who are thirsty for God's unconditional love. This past week the fountain water was frozen and I was amazed at the beautiful change that took place. Our lives continue to change in our journey with God and in that change we experience the beauty and mystery of God's presence in our lives.

Adult Spiritual Formation has provided many different opportunities for spiritual growth this past year. We were delighted with the Arts and Spirituality sessions that were led by so many of Good Shepherd's artists around the

dedication of the new Parish Hall last spring. Thank you to Rachel Baughn and Carol Smucker who served as our Adult Spiritual Formation Team.

This Fall a new Adult Spiritual Formation Team was formed: Angela and Tom Wilkerson, Teresa Gribble, Kay Covode, and Becky Van Gorder. "Walking the Way in the Church and the World" was a series presented by many different members of Good Shepherd. A Bible Study continues to be offered each week. We are certainly blessed to have so many spiritual leaders in our parish!

What an awesome Youth Ministry Team Good Shepherd has! It is a privilege to work with all of them. Thank you so much! Just a few highlights for the year:

Youth Team Coordinator: Barb Lanwermeier

The Youth Team meets quarterly during the year. Barb has done an outstanding job enabling youth ministry to grow and blossom at Good Shepherd. I am grateful for her leadership!

Nursery: Toni Moral-coordinator

We have a new, bright nursery! Thank you to Betsy Wilson and Trish Reynolds for painting the nursery as well as the mural of Noah's Ark! Thank you to all the volunteers who have made the nursery a welcome place for children!

Children's Church: Bess Lee-coordinator

We welcome children to worship at Good Shepherd and after a Children's Message, the children experience the lessons and seasons of the church year through the love and joy of several volunteers who give of themselves at least once a month. Consider volunteering.

Kids Praise: Mary Golnitz-director

What a delight to work with such talented young people. Singing, playing instruments, drama, puppet plays and "A Simple Christmas Pageant" were some of the ways these children express their love of Jesus. Thank you to Carol Smucker for accompanying on the piano.

Acolyte Ministry: Karen Neumann-coordinator

We are grateful to the youth who participate in worship leadership through this ministry.

Confirm not Conform (Confirmation): Mary Golnitz-teacher

This is a one year opportunity for youth and an adult spiritual mentor from Good Shepherd, to experience a faith journey through Bible Study, prayer conversation and to discern the opportunity to affirm their baptism through confirmation. Two students, A.J. Bruce and Donna Blekfeld-Sztraky will be confirmed by Bishop Taylor on January 22, 2012. Thank you to Keith Christensen and Mary Stewart King for being their mentors. Two more students, Jesse Neumann and Wade Covington are currently meeting with mentors, Mike Lee and Tom Griffiths.

Life Savers: Turner Guidry and Georgia Bethel-coordinators

This is a group of middle and high school youth who meet weekly for faith formation and fellowship with the youth at Oak Forest Methodist Church. We are grateful for their mission outreach emphasis and are proud of their work at the deaf village in Jamaica this past summer.

Vestry Liaison: Mike Lee-Thank you for all your support!

Thank you to Laurel Adams who has directed the Epiphany Play this past year and helped direct "A Simple Christmas Pageant" this Christmas Eve. We are so blessed to have her wonderful directing skills bless our worship.

Thank you to David Smucker and all who have volunteered on providing a space for youth ministry. We look forward to "moving in" in 2012!

May the "Living Waters" of God's love and mercy quench your thirst!

Serving Christ,
Mary Golnitz

Church of the Good Shepherd - Hayesville, NC
Balance Sheet as of December 31, 2011

Monday, January 16, 2012

Page 1 of 2

Account #	Account Name	Beginning Balance	YTD Balance
Assets			
1.101.100	UCB Checking	88,601.26	176,152.41
1.102.250	UCB Capital Account Checking	17,568.16	0.00
1.103.125	UCB Money Market	10,110.05	0.00
1.201.575	Healing Winds Cert of Dep 02/09 to 02/10	11,746.96	11,746.96
1.201.578	Healing Winds Cert of Deposit 11/20/09	20,000.00	20,000.00
1.301.001	Account Receivable - Region 3 OSL	0.00	3,000.00
Total Assets		\$148,026.43	\$210,899.37
Liabilities			
2.000.000	Accounts Payable/Vendors	0.00	(17.60)
2.101.200	941 Payroll Withholding	5,906.26	2,903.12
2.101.201	State Withholding - NCDOR	1,132.00	587.00
2.101.203	Legacy Building Loan	236,000.00	294,217.72
2.101.204	Diocese Building Loan	25,000.00	25,000.00
2.101.205	Mountain of Faith Loan	0.00	25,000.00
2.101.206	Short Term Building Loan	0.00	150,000.00
Total Liabilities		\$268,038.26	\$497,690.24
Fund Balance			
3.101.100	General Fund Balance	(2,799.85)	(15,600.67)
3.101.160	Diocese Loan Balance	(25,000.00)	(25,000.00)
3.101.161	Mountain of Faith Loan Balance	0.00	(25,000.00)
3.101.200	Region 3 OSL Account Receivable Balance	0.00	3,000.00
3.102.200	Capital/Legacy Working Account Balance	18,311.96	84,686.28
3.102.210	Capital/Maintenance Reserve Fund Balance	0.00	12,000.00
3.102.251	Prepaid Pledges Fund	120.00	2,200.00
3.102.253	Wish List Items Balance	0.00	193.12
3.102.254	Good Shepherd Image Fund Balance	0.00	407.00
3.102.260	Legacy Fund Balance	41,505.00	31,523.00
3.102.266	Liability Building Loan Fund Balance	(236,000.00)	(294,217.72)
3.102.267	Liability Short Term Building Loan Balance	0.00	(150,000.00)
3.103.300	Outreach Fund Balance	366.40	606.91
3.103.310	Angel Tree Balance	567.17	0.00
3.103.316	Country Fare	2,113.48	3,421.51
3.103.324	Durgapur Prayer Shawl Ministry Balance	105.00	0.00
3.103.326	Durgapur Mission Trip Fund Balance	3,569.73	0.00
3.103.328	Durgapur Good Shepherd Clinic Fund Balance	50.00	0.00
3.103.332	Food Pantry Fund Clay County	(50.00)	0.00
3.103.338	Thanksgiving Baskets Fund	0.00	16.74
3.103.342	UTO Fund	5.00	0.00
3.103.350	Rector's Discretionary Desig.	93.00	50.00
3.103.351	Rector Disc. and Healing Min. Fund	1,040.33	1,040.33
3.103.352	Rector's Sabbatical Designated Balance	2,000.00	2,000.00
3.103.363	Art & Spirituality Balance	0.00	1,363.50
3.103.364	Parish Hall Events Balance	0.00	1,837.29
3.104.401	Hampton-Moran Scholarship Desig.	8,781.01	10,001.01
3.104.402	Sanctuary Candles Designated	(46.74)	0.00
3.104.405	Memorial Garden Designated	877.50	656.25
3.104.410	Bill DuBose Cursillo Fund Fund	160.15	160.15

Church of the Good Shepherd - Hayesville, NC
Balance Sheet as of December 31, 2011

Monday, January 16, 2012

Page 2 of 2

Account #	Account Name	Beginning Balance	YTD Balance
3.104.412	Memorial Mary Gaunt Fund	315.00	0.00
3.104.460	Memorials/Designated Gifts Fund	840.00	705.70
3.104.470	Memorial/Beth Taylor Fund	0.00	1,661.65
3.104.481	Eleanor Wilson Memorial Fund Balance	1,400.00	1,500.00
3.104.482	Virginia Lee Chambliss Balance	270.00	0.00
3.104.483	Virginai Whiting Memorails Fund Balance	170.00	0.00
3.104.484	Sam Oliver Memorial Balance	0.00	5,486.56
3.104.490	Memorial Building Fund Balance	2,050.00	0.00
3.104.493	Carolyn Taylor Memorial fund Balance	30.00	0.00
3.104.494	Dale Howard Memorial Balance	1,490.00	1,061.45
3.104.496	Bob Forman Memorial Fund Balance	250.00	0.00
3.104.497	Lou White Memorial Balance	0.00	1,405.00
3.201.125	Diocesan Convention Designated Fund	19.65	0.00
3.201.539	Kitchen Balance	0.00	(1,140.87)
3.201.540	Flower Guild DesignatedBalance	880.88	980.67
3.201.543	Adult Ed Desig.	0.00	(255.44)
3.201.545	Altar Guild Desig.Balance	200.00	130.41
3.201.547	Liturgical Mat. Desig Balance	76.16	0.00
3.201.550	Acolyte Desig. Balance	159.13	159.13
3.201.555	Music Mat Desig Balance	2,483.67	4,202.77
3.201.560	Coffee Hour Balance	197.31	(725.50)
3.201.563	Library Designated Balance	1.30	1.30
3.201.565	Prayer Shawl Ministry Balance	238.70	208.20
3.201.566	Bereavement Committee Balance Balance	9.39	(30.39)
3.201.570	Stephen Ministry Desig Balance	32.10	0.00
3.201.574	Healing Winds Certificates of Deposit Balance	31,746.96	31,746.96
3.201.575	Healing Min/Healing Winds Bal.	11,756.86	8,656.15
3.201.576	Healing Ministry/OSL Balance	982.41	2,172.41
3.201.577	Daughters of the King Fund	101.00	0.00
3.201.580	Bible Study Balance	23.12	0.00
3.201.585	Church Youth Desig. Balance	2,957.35	1,358.90
3.201.586	Church Youth Mission Balance	0.00	971.56
3.201.587	Youth - Lifesavers Balance	0.00	300.00
3.201.590	Landscaping Balance	215.26	552.57
3.201.595	Prayer Garden Balance	4,631.31	2,936.37
3.201.605	Men's Association Balance	486.09	427.54
3.201.610	Newcomers/Welcoming Balance	338.12	338.12
3.201.615	Vestry Retreat Balance	26.77	0.00
3.201.620	Parish Retreat Balance	134.12	134.12
3.201.625	Staff Christmas Balance	40.00	0.00
3.201.635	Miscellaneous Desig. Balance	429.98	0.00
3.201.637	Heifer Project Balance Balance	140.00	140.00
3.201.639	Office Designated Fund Balance	75.00	84.20
3.201.640	Smucker Recognition Balance	0.00	3,685.00
3.310.301	Desoto Square Designated Balance	0.00	50.00
3.999.999	Suspense Fund	(978.61)	(1,040.11)
Total Fund Balance		(\$120,011.83)	(\$286,790.87)
Total Liabilities and Fund Balance		<u>\$148,026.43</u>	<u>\$210,899.37</u>

Church of the Good Shepherd - Hayesville, NC
Treasurer's Report as of December 2011 for General Fund

Monday, January 16, 2012

Page 1 of 3
Annual Budget
Remaining

Account #	Account Name	Period Activity	Monthly Budget	YTD Balance	Budget YTD	Annual Budget Remaining
Income						
4.101.100	General Fund Contributions	25,583.39	25,823.00	276,769.49	309,920.00	33,150.51
4.101.105	Local Use Only Contributions	1,760.00	343.00	16,540.00*	4,160.00	(12,380.00)
4.101.110	Money Market Interest Income	0.00		36.21		
4.101.111	Sales Tax Refund	0.00		0.00		
	Total Income	\$27,343.39	\$26,166.00	\$293,345.70	\$314,080.00	\$20,734.30
LOCAL EXPENSES						
5.101.100	Rector Salary & SECA	4,166.14	4,169.00	49,995.00	49,995.00	0.00
5.101.110	Rector Housing/Utilities	1,244.32	1,258.00	15,162.00	15,162.00	0.00
5.101.120	Administrative Assist. Salary	2,762.24	2,764.00	33,146.00	33,146.00	0.00
5.101.125	Accountant Salary	735.50	730.00	8,826.00	8,826.00	0.00
5.101.130	Ministry Coord. Salary	0.00	985.00	0.00	11,886.00	11,886.00
5.101.135	Min.Coord Salary -Sue	990.50		11,886.00		
5.101.137	Director Christian Education	552.55	735.00	8,657.79	8,842.00	184.21
5.101.138	Music Director	416.74	413.00	5,000.00	5,000.00	0.00
5.101.140	Organist	664.74	661.00	7,976.00	7,976.00	0.00
5.101.150	Choir Accompanist	224.26	228.00	2,692.00	2,692.00	0.00
5.101.160	Supply Priest	0.00	58.00	1,458.22*	707.00	(751.22)
5.101.170	Rector Sabbatical Reserve	0.00		0.00		
5.101.180	Nursery	(31.88)		0.00		
	Total Salaries	\$11,725.11	\$12,001.00	\$144,799.01*	\$144,232.00	(\$567.01)
5.101.200	Payroll Taxes	524.64	494.00	5,788.29	5,873.00	84.71
5.101.210	Health Insurance	1,919.36	1,577.00	22,395.32*	18,968.00	(3,427.32)
5.101.220	Rector Pension	977.36	981.00	11,728.32*	11,728.00	(0.32)
5.101.230	Staff Pensions	138.11	135.00	1,657.32*	1,653.00	(4.32)
5.101.240	Workers Compensation	0.00	81.00	585.64	983.00	397.36
	Total Benefits	\$3,559.47	\$3,268.00	\$42,154.89*	\$39,205.00	(\$2,949.89)
5.101.300	Rector Car Allowance	591.74	588.00	7,100.00	7,100.00	0.00
5.101.310	Rector Continuing Ed.	0.00	19.00	573.10*	250.00	(323.10)
5.101.320	Deacon Continuing Education	0.00	15.00	248.00*	125.00	(123.00)
5.101.330	Director Christian Education Professional Expense	0.00	19.00	395.00*	250.00	(145.00)
	Total Professional Expenses	\$591.74	\$641.00	\$8,316.10*	\$7,725.00	(\$591.10)
	Total Personnel Costs	\$15,876.32	\$15,910.00	\$195,270.00*	\$191,162.00	(\$4,108.00)
5.200.000	Capital account	0.00	1,000.00	11,000.00	12,000.00	1,000.00

Church of the Good Shepherd - Hayesville, NC
Treasurer's Report as of December 2011 for General Fund

Monday, January 16, 2012

Page 2 of 3
Annual Budget
Remaining

Account #	Account Name	Period Activity	Monthly Budget	YTD Balance	Budget YTD	Annual Budget Remaining
Capital Account						
5.200.210	Outreach Committee	\$0.00	\$1,000.00	\$11,000.00	\$12,000.00	\$1,000.00
5.200.215	Mission Outreach	2,625.00	1,750.00	15,883.26	21,000.00	5,116.74
5.200.220	Seminary Contribution	0.00		0.00		
5.200.230	Rector's Discretionary Fund	331.39	375.00	4,500.00	4,500.00	0.00
5.200.240	Deacon's Discretionary Fund	175.00	175.00	2,100.00	2,100.00	0.00
	Total Outreach Commitments	\$3,131.39	\$2,300.00	\$22,483.26	\$27,600.00	\$5,116.74
	Total Discretionary Expenses	\$3,131.39	\$3,300.00	\$33,483.26	\$39,600.00	\$6,116.74
5.102.100	Utilities	746.49	1,000.00	11,881.71	12,000.00	118.29
5.102.110	Insurance	759.35	337.00	5,594.25*	4,000.00	(1,594.25)
5.102.120	Maintenance	57.01	500.00	5,394.05	6,000.00	605.95
5.102.130	Cleaning Contract	660.00	585.00	5,626.40	7,020.00	1,393.60
5.102.140	Building and Grounds	0.00	50.00	0.00	600.00	600.00
	Total Facility Overhead	\$2,222.85	\$2,472.00	\$28,496.41	\$29,620.00	\$1,123.59
5.103.100	Office Supplies/Software	97.14	263.00	2,725.68	3,200.00	474.32
5.103.110	Copier Lease	268.50	337.00	3,426.17	4,000.00	573.83
5.103.120	Postage	133.60	150.00	1,765.60	1,800.00	34.40
5.103.130	Telephone	263.13	286.00	3,074.42	3,399.00	324.58
5.103.140	Miscellaneous	194.49	88.00	448.79	1,100.00	651.21
5.103.150	Pictorial Directory	0.00	13.00	0.00	200.00	200.00
5.103.160	Payroll Services	0.00		0.00		
5.103.170	Finance/Stewardship	0.00	37.00	487.52*	400.00	(87.52)
	Total Office/Administration	\$956.86	\$1,174.00	\$11,928.18	\$14,099.00	\$2,170.82
5.104.100	Church School/VBS	156.67	25.00	437.06*	300.00	(137.06)
5.104.110	Church Youth/Acolyte	(200.00)	24.00	219.08	244.00	24.92
5.104.120	Altar Guild	0.00	87.00	942.23	1,000.00	57.77
5.104.130	Liturgical Materials	163.72	150.00	1,603.00	1,800.00	197.00
5.104.140	Parish Life	58.47	163.00	2,034.51*	2,000.00	(34.51)
5.104.150	Adult Education	429.59	53.00	625.00	625.00	0.00
5.104.160	Music	0.00	137.00	1,082.05	1,600.00	517.95
5.104.170	Flower Guild	61.22	13.00	200.00	200.00	0.00
5.104.180	Newcomers/Welcoming	16.01	44.00	381.62	550.00	168.38
5.104.190	Pastoral Care	37.50	63.00	875.56*	800.00	(75.56)
5.104.200	Healing Ministry	14.79	50.00	542.84	600.00	57.16

**Church of the Good Shepherd - Hayesville, NC
Treasurer's Report as of December 2011 for General Fund**

Monday, January 16, 2012

Account #	Account Name	Period Activity	Monthly Budget	YTD Balance	Budget YTD	Annual Budget Remaining
5.104.210	Stephen Ministry	59.41	163.00	803.90	2,000.00	1,196.10
5.104.220	Vestry	379.43	38.00	452.55	500.00	47.45
5.104.230	Library	0.00	38.00	428.92	500.00	71.08
	Total Congregational Min.	\$1,176.81	\$1,048.00	\$10,628.32	\$12,719.00	\$2,090.68
5.200.100	Diocesan Assessment	2,112.00	2,112.00	25,300.00	25,300.00	0.00
5.200.110	Lake Logan	0.00		0.00		
5.200.120	Convention Expenses	(19.65)	87.00	535.35	1,000.00	464.65
	Total Diocesan Commitments	\$2,092.35	\$2,199.00	\$25,835.35	\$26,300.00	\$464.65
	Total Budget	\$25,456.58	\$26,103.00	\$305,641.52	\$313,500.00	\$7,858.48
5.101.111	Sales Refunds for Building Transfer	0.00		0.00		
5.104.165	Supply Musician	0.00	13.00	305.00*	200.00	(105.00)
5.104.240	Cursillo	0.00	15.00	0.00	180.00	180.00
5.200.260	Diocese Seminarian	0.00	13.00	200.00	200.00	0.00
	TOTAL LOCAL EXPENSE	\$25,456.58	\$26,144.00	\$306,146.52	\$314,080.00	\$7,933.48
	Difference	\$1,886.81	\$22.00	(\$12,800.82)	\$0.00	

* = Income/Expense exceeds amount budgeted to date

Church of the Good Shepherd - Hayesville, NC
Consolidated Fund Activity Report as of 12/31/2011

Monday, January 16, 2012

Page 1 of 3

Account #	Account Name	Beg Balance	Receipts	Disbursements	Transfers/JE's	End Balance
3.101.100	General Fund Balance	(2,799.85)	293,345.70	306,146.52	0.00	(15,600.67)
3.101.160	Diocese Loan Balance	(25,000.00)	0.00	0.00	0.00	(25,000.00)
3.101.161	Mountain of Faith Loan Balance	0.00	(25,000.00)	0.00	0.00	(25,000.00)
3.101.200	Region 3 OSL Account Receivable Balance	0.00	3,000.00	0.00	0.00	3,000.00
3.102.200	Capital/Legacy Working Account Balance	18,311.96	632,954.46	554,580.14	(12,000.00)	84,686.28
3.102.210	Capital/Maintenance Reserve Fund Balance	0.00	0.00	0.00	12,000.00	12,000.00
3.102.251	Prepaid Pledges Fund	120.00	2,200.00	120.00	0.00	2,200.00
3.102.253	Wish List Items Balance	0.00	15,045.00	14,851.88	0.00	193.12
3.102.254	Good Shepherd Image Fund Balance	0.00	407.00	0.00	0.00	407.00
3.102.260	Legacy Fund Balance	41,505.00	215,411.00	225,393.00	0.00	31,523.00
3.102.266	Liability Building Loan Fund Balance	(236,000.00)	0.00	58,217.72	0.00	(294,217.72)
3.102.267	Liability Short Term Building Loan Balance	0.00	0.00	150,000.00	0.00	(150,000.00)
3.103.300	Outreach Fund Balance	366.40	5,350.00	5,109.49	0.00	606.91
3.103.305	African Team Ministries Bal.	0.00	90.00	90.00	0.00	0.00
3.103.310	Angel Tree Balance	567.17	405.00	972.17	0.00	0.00
3.103.315	CROP Walk Balance	0.00	94.00	94.00	0.00	0.00
3.103.316	Country Fare	2,113.48	15,989.37	14,681.34	0.00	3,421.51
3.103.319	School Bags Fund	0.00	287.00	287.00	0.00	0.00
3.103.324	Durgapur Prayer Shawl Ministry Balance	105.00	230.00	335.00	0.00	0.00
3.103.325	Epis. Relief/Develp Balance	0.00	75.00	75.00	0.00	0.00
3.103.326	Durgapur Mission Trip Fund Balance	3,569.73	3,465.35	7,035.08	0.00	0.00
3.103.328	Durgapur Good Shepherd Clinic Fund Balance	50.00	100.00	150.00	0.00	0.00
3.103.329	Durgapur Medical Mission Trip Balance	0.00	1,078.66	1,078.66	0.00	0.00
3.103.330	Food for the Poor Balance	0.00	400.00	400.00	0.00	0.00
3.103.331	Food Pantry Towns County Balance	0.00	200.00	200.00	0.00	0.00
3.103.332	Food Pantry Fund Clay County	(50.00)	3,065.00	3,015.00	0.00	0.00
3.103.333	Good Friday Fund	0.00	565.00	565.00	0.00	0.00
3.103.338	Thanksgiving Baskets Fund	0.00	41.74	25.00	0.00	16.74
3.103.340	Thompson Child/Fam Balance	0.00	346.81	346.81	0.00	0.00
3.103.341	Parish Life Designated Balance	0.00	346.72	346.72	0.00	0.00
3.103.342	UTO Fund	5.00	226.06	231.06	0.00	0.00

**Church of the Good Shepherd - Hayesville, NC
Consolidated Fund Activity Report as of 12/31/2011**

Monday, January 16, 2012

Page 2 of 3

Account #	Account Name	Beg Balance	Receipts	Disbursements	Transfers/JE's	End Balance
3.103.350	Rector's Discretionary Desig.	93.00	2,621.28	2,664.28	0.00	50.00
3.103.351	Rector Disc. and Healing Min. Fund	1,040.33	0.00	0.00	0.00	1,040.33
3.103.355	Deacon's Discretionary Balance	0.00	383.28	383.28	0.00	0.00
3.103.361	Lake Logan Designated Fund Balance	0.00	50.00	50.00	0.00	0.00
3.103.362	OSL India Fund Balance	0.00	1,625.00	1,625.00	0.00	0.00
3.103.363	Art & Spirituality Balance	0.00	1,583.50	220.00	0.00	1,363.50
3.103.364	Parish Hall Events Balance	0.00	2,640.00	802.71	0.00	1,837.29
3.103.380	Diocese Seminarian Fund Balance	0.00	412.00	412.00	0.00	0.00
3.104.401	Hampton-Moran Scholarship Desig.	8,781.01	1,220.00	0.00	0.00	10,001.01
3.104.402	Sanctuary Candles Designated	(46.74)	371.56	324.82	0.00	0.00
3.104.405	Memorial Garden Designated	877.50	200.00	421.25	0.00	656.25
3.104.410	Bill DuBose Cursillo Fund Fund	160.15	0.00	0.00	0.00	160.15
3.104.412	Memorial Mary Gaunt Fund	315.00	0.00	315.00	0.00	0.00
3.104.460	Memorials/Designated Gifts Fund	840.00	10.00	144.30	0.00	705.70
3.104.470	Memorial/Beth Taylor Fund	0.00	1,828.49	0.00	(166.84)	1,661.65
3.104.481	Eleanor Wilson Memorial Fund Balance	1,400.00	100.00	0.00	0.00	1,500.00
3.104.482	Virginia Lee Chambliss Balance	270.00	0.00	0.00	(270.00)	0.00
3.104.483	Virgina Whiting Memorails Fund Balance	170.00	0.00	170.00	0.00	0.00
3.104.484	Sam Oliver Memorial Balance	0.00	5,486.56	0.00	0.00	5,486.56
3.104.490	Memorial Building Fund Balance	2,050.00	0.00	2,050.00	0.00	0.00
3.104.493	Carolyn Taylor Memorial fund Balance	30.00	0.00	30.00	0.00	0.00
3.104.494	Dale Howard Memorial Balance	1,490.00	0.00	428.55	0.00	1,061.45
3.104.496	Bob Forman Memorial Fund Balance	250.00	0.00	250.00	0.00	0.00
3.104.497	Lou White Memorial Balance	0.00	0.00	(1,405.00)	0.00	1,405.00
3.201.125	Diocesan Convention Designated Fund	19.65	0.00	19.65	0.00	0.00
3.201.539	Kitchen Balance	0.00	371.00	1,511.87	0.00	(1,140.87)
3.201.540	Flower Guild DesignatedBalance	880.88	3,313.14	3,213.35	0.00	980.67
3.201.543	Adult Ed Desig.	0.00	626.00	904.56	23.12	(255.44)
3.201.545	Altar Guild Desig.Balance	200.00	465.58	535.17	0.00	130.41
3.201.547	Liturgical Mat. Desig Balance	76.16	0.00	76.16	0.00	0.00
3.201.550	Acolyte Desig. Balance	159.13	0.00	0.00	0.00	159.13
3.201.555	Music Mat Desig Balance	2,483.67	1,928.29	209.19	0.00	4,202.77
3.201.560	Coffee Hour Balance	197.31	186.50	1,109.31	0.00	(725.50)
3.201.563	Library Designated Balance	1.30	0.00	0.00	0.00	1.30
3.201.565	Prayer Shawl Ministry Balance	238.70	55.00	85.50	0.00	208.20

Church of the Good Shepherd - Hayesville, NC
Consolidated Fund Activity Report as of 12/31/2011

Monday, January 16, 2012

Page 3 of 3

Account #	Account Name	Beg Balance	Receipts	Disbursements	Transfers/JE's	End Balance
3.201.566	Bereavement Committee Balance	9.39	0.00	39.78	0.00	(30.39)
	Balance					
3.201.570	Stephen Ministry Desig Balance	32.10	0.00	32.10	0.00	0.00
3.201.571	Pastoral Care Desig. Bal.	0.00	16.01	16.01	0.00	0.00
3.201.574	Healing Winds Certificates of Deposit Balance	31,746.96	0.00	0.00	0.00	31,746.96
3.201.575	Healing Min/Healing Winds Bal.	11,756.86	9,245.59	12,346.30	0.00	8,656.15
3.201.576	Healing Ministry/OSL Balance	982.41	1,320.00	130.00	0.00	2,172.41
3.201.577	Daughters of the King Fund	101.00	20.00	121.00	0.00	0.00
3.201.580	Bible Study Balance	23.12	0.00	23.12	0.00	0.00
3.201.585	Church Youth Desig. Balance	2,957.35	4,433.90	6,032.35	0.00	1,358.90
3.201.586	Church Youth Mission Balance	0.00	8,664.34	7,692.78	0.00	971.56
3.201.587	Youth - Lifesavers Balance	0.00	300.00	0.00	0.00	300.00
3.201.590	Landscaping Balance	215.26	1,070.61	1,003.30	270.00	552.57
3.201.595	Prayer Garden Balance	4,631.31	2,835.00	4,529.94	0.00	2,936.37
3.201.605	Men's Association Balance	486.09	383.00	441.55	0.00	427.54
3.201.610	Newcomers/Welcoming Balance	338.12	0.00	0.00	0.00	338.12
3.201.615	Vestry Retreat Balance	26.77	976.00	1,002.77	0.00	0.00
3.201.620	Parish Retreat Balance	134.12	0.00	0.00	0.00	134.12
3.201.625	Staff Christmas Balance	40.00	1,950.00	1,990.00	0.00	0.00
3.201.635	Miscellaneous Desig. Balance	429.98	1,708.61	1,995.04	(143.55)	0.00
3.201.636	Green Team Designated Balance	0.00	5,000.00	5,000.00	0.00	0.00
3.201.637	Heifer Project Balance Balance	140.00	0.00	0.00	0.00	140.00
3.201.639	Office Designated Fund Balance	75.00	115.00	105.80	0.00	84.20
3.201.640	Smucker Recognition Balance	0.00	3,685.00	0.00	0.00	3,685.00
3.201.641	Utilities Designated Balance	0.00	50.00	50.00	0.00	0.00
3.310.301	Desoto Square Designated Balance	0.00	50.00	0.00	0.00	50.00
3.999.999	Suspense Fund	(978.61)	0.00	61.50	0.00	(1,040.11)
	Total	(<u>\$122,011.83</u>)	<u>\$1,237,019.11</u>	<u>\$1,403,510.88</u>	<u>(\$287.27)</u>	<u>(\$288,790.87)</u>

Recap of Legacy Fund and Building Mortgages

Legacy Fund

Total Pledges Made	\$985,071
Pledges Removed by Request	[18,085]
Pledges Removed due to in doubt	[10,375]
Net Pledge Amount	\$956,611
Pledge Payments Received to 12/31/11	[829,312]
Pledges Due as of 12/31/11	\$127,299
Legacy Funds on Hand as of 12/31/11	\$116,209

Mortgages on Our Buildings

Short-Term Building Loan 0.0% interest due 12/31/2012	\$150,000
Diocese Loan 0.0% Interest due 05/2015	25,000
Mountain of Faith Loan 0.0% Interest due 05/2021	25,000
United Community Bank Loan 5.5% Interest 12/14/11 converted to regular 20 year mortgage. Monthly payments \$ 2,029.43	294,218

Finance Committee

The Good Shepherd Finance Committee consists of Pat Fox, Lou Lanwermyer, Helen Mulcahy, Jane Oliver, Jim Reynolds (Chairperson), Elizabeth Rybicki (Good Shepherd's Treasurer), Doug Stuart, and Linda Wingo.

The Finance Committee presented the 2011 budget of \$314,080 to the Vestry and it was approved on December 19, 2010. While the Committee kept a close eye on the budget, income did not match expenditures. Pledge income was down 8% and loose plate/non-pledge income was down \$14,000 from projections. It was felt that while the economy had some part in this, the generous giving during the year of the parish to various construction projects and other charitable requests were also main factors. These donations apparently drew monies away from what was pledged or normally given to the operating budget. Consequently, the General Fund ended 2011 \$15,600 in arrears.

Taking the shortfalls of 2011 into consideration, the Finance Committee revised a previously approved 2012 budget that was set at \$338,593 and obtained, on January 11, Vestry approval for a budget of \$313,418. This budget is based on: reducing the interim rector's salary by 10% and not bringing him/her on before April 1; freezing all ministry budgets at 2011 expenditure levels with some exceptions; and, providing no more than the 2011 funding level to Outreach and the Diocese Assessment. The Finance Committee will monitor the budget and make recommendations to the Vestry throughout the year with the goal that the General Fund will end 2012 in better shape.

The Finance Committee was also requested to monitor the repayment of the loan for the building construction. To reduce the impact of the mortgage payment on the budget, a number of parishioners provided the church with a short term loan of \$150,000. This loan must be paid back by December 31, 2012. This saved us approximately \$1,000 a month in mortgage payments. The loan will be paid back from the outstanding pledges to the building construction. Updates on the status of their pledges have gone to those who pledged and we expect to have all payments in by mid-2012. This payback is in addition to the \$24,000 from the operating budget needed to meet the annual bank mortgage payment.

In 2012, the Finance Committee will be emphasizing to the congregation that any donation given to the church for whatever purpose must be an addition to their normal support to maintaining the operation of Good Shepherd.

Annual Budget

	2012 Budget
Rector Salary & SECA	\$40,122
Rector Housing/Utilities	\$6,433
Administrative Assist. Salary	\$33,809
Accountant Salary	\$9,003
Ministry Coordinator Salary	\$12,124
Director Christian Education	\$9,019
Music Director	\$6,000
Organist	\$8,136
Choir Accompanist	\$2,746
Supply Priest	\$2,500
TOTAL SALARIES	\$129,890
Payroll Taxes	\$5,990
Health Insurance	\$20,139
Rector Pension	\$9,308
Staff Pensions	\$1,686
Workers Compensation	\$1,003
TOTAL BENEFITS	\$38,126
Rector Car Allowance	\$7,295
Rector Continuing Ed.	0
Rector Sabbatical Reserve	0
New Rector Transition	\$4,000
Deacon Continuing Ed	\$250
Director Christian Ed Continuing Ed	\$250
TOTAL PROFESSIONAL EXPENSES	\$11,795
TOTAL PERSONNEL COSTS	\$179,812
Capital Account	\$24,000
Maintenance Reserve Fund	0
CAPITAL ACCOUNT	\$24,000
Outreach Committee	\$21,000
Mission Outreach	\$500
Seminary Contribution	\$200
Rector's Discretionary Fund	\$4,500
Deacon's Discretionary Fund	\$2,100
Lake Logan	0
TOTAL OUTREACH COMMITMENTS	\$28,100

Utilities	\$12,000
Water	\$906
Insurance	\$5,029
Maintenance	\$5,000
Cleaning Contract	\$7,400
Building and Grounds	\$800
TOTAL FACILITY OVERHEAD	\$31,135
Office supplies/software	\$2,800
Copier Lease	\$3,600
Postage	\$1,800
Telephone	\$3,299
Miscellaneous	\$1,100
Pictorial Directory	\$0
Finance Stewardship	\$300
TOTAL OFFICE/ADMINISTRATION	\$12,899
Church School/VBS	\$300
Acolyte	\$85
Youth Group--Turner	0
Altar Guild	\$330
Liturgical Materials	\$1,500
Parish Life	\$2,100
Adult Education	\$625
Music	\$1,100
Supply Musicians	\$300
Flower Guild	\$200
Newcomers/ Welcoming	\$0
Pastoral Care	\$900
Healing Ministry	\$600
Kitchen Upkeep	\$1,040
Coffee Hour	\$1,040
Stephen Ministry	\$2,200
Vestry	\$500
Library	\$450
Cursillo	\$190
Communications	\$162
TOTAL CONGREGATIONAL MINISTRIES	\$13,622
Diocesan Assessment	\$23,300
Convention Expenses	\$550
TOTAL DIOCESAN COMMITMENTS	\$23,850
TOTAL 2012 BUDGET	\$313,418

Altar Guild

The Altar Guild is made up of lay people who feel called to God's service through a mostly unseen and very private service. It is the duty of those on the Altar Guild to serve the priest and assist him by preparing the sanctuary with all of the elements necessary for the worship service, most specifically for preparing the Lord's Table for the sacrament of Holy Eucharist.

This past year has been a blessing to me through faithful service of all those who make up the Altar Guild. We are truly blessed with several teams of very capable and dependable people. Several new people have joined our teams and we are very excited to have them with us. Team One consists of: Pat Hicks, Sue LeKites and Judy Steinbauer; Team Two consists of Georgia Bethel, Stephanie Forbes and Carolyn Cline Griffiths; Team Three: Pat Halloran, Mary Stewart King and Diane Welton; Team Four: Sylvia Hartwell, Kathryn Hoyt and Mary Strange and Ruthanne Chesebro. We have six people willing to serve on our 8 a.m. team: Pat Jordan, Virginia Hunter, Susan Kelley and Michelle Lawrence, Susan Hoffman and Barb Redmond. Becky Van Gorder and Pat Hicks continue their service for the healing service each and every Thursday. We are still doing the Tuesday Evening "Soaking Prayer" with Fr. John and the Healing Team. After a short retirement Pat Drew has now returned to her ministry of caring for our linens. Pat no longer drives so we thank Nick George for taking the soiled linens to her and returning them fresh and clean each week we welcome her back with open arms. Her work is impeccable.

Anne Wolf has blessed us with her hand woven Baptism Towels which are given to our newest members upon their Baptism. We thank Lois Ann Wentzel who has blessed us with linens for the new Chapel

We are truly blessed with a new pair of torches given by Earle Seaverns in memory of his son, Donald and made by Jerome Laux. We thank you Earle. Jerome has also made a new banner/parament holder that hangs on the wall so we have finally discarded the quilt rack and have much more room in the Sacristy. We also have a new step stool and new lighting. I believe we are in the process of getting some much needed heat and air brought into our little room many thanks to Jerome and David Smucker.

My duties as Altar Guild director continue to feed me spiritually and I consider it a privilege to be able to serve the Lord Through this ministry. By God's grace and through His direction I will continue in His service.

In Christ's Service, Pat Jordan

Alternative Christmas Shopping

This year's Alternative Christmas Shopping was held in November the Sunday before the beginning of Advent. This seemed to work very well as we had around 15 participants of our "Partners in Outreach". About \$1,400.00 was given or pledged to those 15 organizations.

Many thanks to all you so generously gave of their time, talent and money to support these worthwhile organizations.

Pat Jordan

Bereavement Hospitality

The Bereavement Hospitality Committee is a ministry that helps organize and assist families with the reception following a funeral or memorial service. We would like to thank all who have volunteered in the past year and welcome those who would join us in future ministry.

Co-Chairmen
Patti Underwood
Mary Stewart King

Blood Drive

In 2011 we only had one blood drive on May 11. It was successful and we met our goal as set by the Red Cross.

I appreciate all who responded and gave blood as well as those who helped in so many ways. It is gratifying to know that Good Shepherd has provided the opportunity for other in the community to be a part of this valuable service.

Sylvia Hartwell

Building Construction Committee

Major construction work under our master contract with Ron Cantrell Construction, Inc. was completed in March of 2011. We held our first major event, The Pancake Supper, on Shrove Tuesday, March 8, in our new Parish Hall. This was followed by the Celebration of Arts and Spirituality, with dedication of the new facilities in May by Bishop Porter.

Major portions of this work included the following:

- New 3200 square foot Parish Hall
- New commercial grade kitchen
- New Nursery
- New Handicap Restroom
- New Choir Vesting and Meeting room
- New Men's and Women's Restrooms

- Expanded and reconditioned Narthex
- New Chapel area added to Nave
- Reconditioned Nave
- New Bell Tower and Entrance area

I want to thank the total Parish for their years of prayer and financial support for our Construction process. This was started with the Long Range Planning Committee, followed by the Building Planning Committee, The Capital Campaign, and the Building Construction Committee. We had an outstanding General Contractor in Ron Cantrell Construction.

Special Thanks also goes for all of the volunteer construction work from framing to painting on the Kitchen, Nursery, Handicap Restroom and the Choir Vesting Room.

With support from the parish and Vestry we began construction work in late August to remodel the old undercroft into a future youth center. This work has also included Heating and Air Conditioning for the Nave with new energy saving units. We have also worked towards completing finishing work on the new undercroft with a new ceiling, lights and heating ducts. This area is now ready for painting, trim work and floor cover. We will complete work on the Youth Center in the New Year.

In addition to the above, a stone bench was completed in conjunction with the Landscaping Committee at our entrance. Just completed for Christmas was our new stone sign at the church entrance road.

David Smucker

Celebration of Arts & Spirituality

From March 12 until April 17, 2011, the parishioners of Good Shepherd came together to rejoice in the completion of our new Parish Hall and other new building facilities by having a month-long Celebration of Arts & Spirituality. Over 60 parishioners did the various jobs required to bring this series of events to reality. An Art Show was staged during two weeks of this time in which 75+ parishioners showed 350+ pieces of their art. Approximately 12 artists demonstrated the making of their art to the parish and community. A vocal and piano concert was held. During each of the Sundays leading up to Easter, Adult Spiritual Formation programming centered around the Art & Spirituality theme. Two bishops, many family members and friends, and many community members visited and celebrated with us during the various events. Donations from both the concert and the sale of art pieces generated

approximately \$2,900. These proceeds were used to help fund our Youth's mission trip to Jamaica and to help fund Good Shepherd's new sign. Through this series of events we were able to learn more about each other and our talents, learn more about our connection to God through our creativity, and welcome our community into our new facilities.

Jane Oliver

Chancel Choir

Our mission statement is to prayerfully worship the triune God through music, to lead the congregation in worshipful song, and to enhance an atmosphere of praise and thanksgiving.

Without a doubt, the loudest praise and thanksgiving to God occurred when all the choir robes and music boxes went into the multi-purpose room. The shelves and desk were built by Jerome Laux.

Music was provided for 44 Sundays, support for 3 memorial services, multiple selections for Lessons and Carols, and scheduling arranged for Joyful Noise and Kids Praise.

Thanks are extended to Anne Hourdequin for her willingness to substitute as organist and pianist. Anne also plays the piano for the Hayesville House ministry for which choir members and others sing twice a month. Jerry Taylor substitutes for Anne as needed. Trish Reynolds frequently accompanies us with her flute and residents light up when she plays. Trish is also the one who accompanies Jerry Taylor with the Lord's Prayer on Sundays and played for our building dedication ceremony.

Behind the scenes, working so wonderfully, have been Sheila and Graham Strong. They have written a new computer program for all our choir music. I simply said, "Wouldn't it be nice if I could..." and they said, "No problem – we can do that!" And they did. Jim Reynolds had previously started me on using the computer as a choir aid.

In May the choir experimented with cantors singing the first phrases of the psalms and the congregation chanting the second portion. Feedback was mostly positive and we may do that again.

The Chancel Choir sang an anthem for both the 8:00 am and 10:45 am Easter services this year. We are always surprised and pleased to find that our voices and fingers work that early in the morning!

Our annual retreat was held on Saturday, August 6, from 10:00 am-3:00 pm in our new Parish Hall. Carol

Smucker and Jerry Taylor accompanied us, the Strong ran CDs and Pam Roman once again fed us a lovely lunch.

This year the choir was invited to participate in Hayesville's Sesquicentennial Celebration on the Square. We sang three of our favorite anthems, Carol accompanied us and Harry Baughn prevented the music from blowing away in the cold wind.

The 26th of March brought the musical finale to this year's "Celebration of Arts and Spirituality" event. This was a fabulous program put on by Suzy and Keith Christensen and Carol Smucker. Such wonderfully talented people!

Our Christmas party this year was hosted by Barb and Lou Lanwermyer. Lou is a new member this year and we appreciated their hospitality.

Practice time for Chancel Choir remains on Thursday from 7:00-8:30 pm. We work hard, laugh a bit and love and support each other. The "Welcome" sign is always out since members come and go.

Bev Larson
Choir Director

Children's Church

Children's Church was incorporated into the 10:45 worship service of Good Shepherd. We are in our second year and have seen the program grow and develop. While we are hopeful to one day offer a Children's Sunday School hour (in addition to Children's Church), this block of time serves both as a "Sunday School-like" opportunity for children and a means in which Elementary School-aged children (kindergarten-5th grade) may exit the larger worship service to receive a focused teaching-time and then return to their families during the Peace so that they may participate in Communion/the remainder of the service.

We currently have 8 volunteer teachers and 2 substitutes.

More volunteer teachers are needed to be able to host Children's Church during the full year (versus taking a break during Summer).

We are currently using the curriculum provided by Church Publishing: Weaving God's Promises. Each lesson provides a flexible structure for the time as follows:

- Gathering time/activity
- Lesson and scripture reading
- Time for prayer

- Craft/play time

It has been agreed upon by the teaching pool to supplement lessons with the following:

- 1) Teaching and memorization of the Lord's Prayer
- 2) The Nicene Creed
- 3) The Ten Commandments
- 4) Open for suggestions

This decision was made based upon the knowledge-level of the children attending Children's Church and the desire to incorporate foundational/core teachings to the lessons, foundational to the Christian faith and to give a baseline understanding of the Episcopal Church.

Respectfully submitted,
Bess Lee

Coffee Hour

The new kitchen is beautiful!!! We are using REAL china and REAL cutlery!!! The Coffee is always FRESH!! Washing up is easy!!!

Gardeners--- Do you need coffee grounds and other compostables for your garden? Contact me to work something out.

Green Team—Do you want to see full scale recycling from our kitchen? Let's work on it together.

What progress from last year when were having coffee in the undercroft.

The new space is comfortable and easy to maintain!!!

With Hattie Sheehy to manage the kitchen during Coffee Hour, volunteering is even easier. The 2012 Coffee Hour Sign Up sheet will be posted in the Information Hallway awaiting commitments from eager volunteers.

We are always looking for volunteers, so stop by if you are interested and we will answer your questions. We can always use left over or "planned over" refreshments or something specially baked or purchased for Coffee Hour.

Coffee Hour is an important part of our worship experience each Sunday. Here is when you have the time to catch up or check something out. Here is where you can experience our vibrant and loving Good Shepherd Christian Community. All are welcome and I encourage everyone to join us.

Thank you all for your patience and support during the building. It has borne the fruit of good fellowship.

Kathy Wright, Chairman

Communications

The newly-formed Communication Committee's goal is to make our church and its activities visible to the surrounding community, to encourage those in the wider community who are looking for a church to come to Good Shepherd, and to provide our church community with tools to help us be better connected. Responsibilities include publicity, web page, signage and pictorial parish directory.

The committee's most noticeable accomplishment this year is the new, beautiful sign at the entrance to the church. Thanks be to God for the support of our vestry, beginning with the encouragement of Sam Oliver, for Monica Schwanitz, Landscape Architect for the design, and for Dave Smucker and his dedicated support and management of this project. What a marvelous, inviting way to show how proud we are of our church and its parish! We hope to have landscaping for the sign blooming by Spring, 2012, as well as a new roadside sign.

Another noteworthy accomplishment this year is our new and improved website. If you haven't checked it out yet, I encourage you to do so, and become familiar with all that is available to you with the click of a key. Not only will you find valuable information about our parish life and ministries, but you'll see links to such sites as the Diocesan Website, Healing Winds and Order of St. Luke, among others. And the site is full of life with pictures of our beautiful church and parish community. You can visit the site at www.goodshepherdhayesville.org. Many, many thanks to Rachel Baughn, our Webmaster, for her dedication and creativity; and to Mike Gora and Ivey Wingo for their continuing support of this important tool.

On-going is our publicity. Helen Naismith has served superbly as our publicist for many years, making sure that whatever is noteworthy and going on at Good Shepherd is made known to the community via our local papers. Helen has decided to move into a well-deserved retirement from this role and her position as publicist will be filled, beginning in January, 2012, by Karen Sirmans. Please offer your thanks to Helen for a job well done for these many years. And 'thank you, Karen,' for so willingly and enthusiastically stepping into this very important ministry role.

We hope to have a new Pictorial Directory published within the first half of 2012. Please let me know if you can help with this project.

Respectfully submitted,
Betsi Wilson, Chair

Country Fare

Country Fare 2012 was a great success netting over \$11,000 which was distributed to local outreach programs. This year's Country Fare was mainly housed in the new Parish hall which provided an air conditioned weather-safe environment for the Boutique and much of the Flea Market. This year's event continued to also include the terrific Fashion Show and luncheon, the bakery and the Silent Auction and dinner. Thanks to the many volunteers who make this event a huge success. Every donation counted since even the leftover items were donated to local thrift shops that came by and picked them up.

Pam Roman

Cursillo/Ultreya

Four members of Good Shepherd Church attended WNC Cursillo #72 in November of 2011. They were Beth Hitchcock, Jeremiah Forbes, Elaine and Del Delcuze. Ivey and Linda Wingo were team members for #72. Group Reunions are an important part of the Cursillo movement, and there are a number of small groups of Cursillistas who group weekly, continuing their commitment to the Cursillo ministry. Two Ultreyas were held in 2011. Each parish in the Western Deanery and all Secretariat members were invited to attend the Ultreyas in an effort to expand the Ultreyas within the deanery. Ruth Siminski, Deanery Representative from Good Shepherd, Cashiers, and Don Miller, Cursillo Lay Director attended the Ultreya in September, 2011.

Ivey Wingo was selected to represent the Western Deanery for the remainder of the 2011-2012 term and is scheduled to serve as Lay Rector of Cursillo #75, Spring of 2013.

The Cursillo/Ultreya ministry is grateful for the funding of two scholarships each year. This provides financial assistance for Good Shepherd members who might otherwise be unable to attend the 3 day weekend of healing and renewal.

Linda and Ivey Wingo

Daughters of the King

This prayer order founded in the Episcopal Church meets the fourth Thursday of every month at 10:00 a.m. for corporate prayer. We've had Quiet/Retreat Days and continue to serve as daily pray-ers for all with special needs. Our order continues to grow within Good Shepherd and we encourage women/girls in the area to join us.

Judy Steinbauer

DeSoto Square

The Clay Cherokee Christian Housing, Inc., DBA DeSoto Square ended 2011 with a very good note. The Good Shepherd Episcopal Church sponsored a Soup and Bread Dinner in April. Quarts of homemade soup and bread were delivered to all residents along with good wishes and cheer. Amy and Gil Nicholson, Pam and Don Roman and Susan Hoffman delivered soup to each resident's door. December Christmas Party was given for the residents with a home cooked meal of ham, sweet potatoes, green beans, rolls and dessert and drinks. Susan Hoffman, Amy Nicholson, Gil Nicholson, Faye Hobbs, Pam Roman served dinner in the DeSoto Square recreation hall. Christmas trees and decorations were provided by Pam Roman. Santa visited and each resident who attended had their picture taken with him. Dinner was delivered to all those who could not attend.

Pam Roman
Susan Hoffman

Flower Guild

The Flower Guild prepares the flowers for the altar as well as the parish hall for memorial receptions and special events. Altar flowers grace the sanctuary during the week and are also taken to parishioners by Lay Eucharistic Visitors when sharing communion.

A flower calendar is posted on the bulletin board by the kitchen for anyone who wishes to provide altar flowers for a specific Sunday during the year. The florist charges \$35 for each arrangement. However, any amount given will be appreciated and it is certainly not necessary to pay the full amount for an arrangement. There is room for two memorials each Sunday and single roses can be placed on the altar as memorials for births and deaths. Simply sign up – record your information for the bulletin – place your check in the offering plate (marked 'flowers'), and the flower guild will do the rest.

We gather in January to bring ourselves up-to-date regarding our duties, review the past year, choose our times of service, welcome new members and, of course, eat a few goodies. Faithful members of the Guild this year are Ella Angelillo, Rachel Baughn, Catherine Clark, Peggy Dickert, Clarice Edmondson, Carolyn Cline-Griffiths, Mary Stewart King, Liz McLamb, Anne Mitchell, Elizabeth Rybicki, Jane Stuart, Patti Underwood and Betty Weiland. Thank you to Anne Mitchell for her yearly creation of the Advent Wreath for us. Our church is blessed to have such devoted and

talented people willing to share their gifts to enhance our worship experience. Also, a very heartfelt thank you to everyone who has participated in the decoration and clean up for Easter, Advent and Christmas; you have been precious blessings.

A cutting garden was planted this year at the back of the church. These flowers will be used to enhance the beauty of our church.

Joy Fox
Barb Redmond

Grazers

The Grazers is a social ministry of Good Shepherd Church. It consists of seven to eight groups of 6-8 persons (couples and singles) meeting monthly for friendship and good times. It helps both new and old members of Good Shepherd meet each other and create new bonds within the church. Each group meets for three to four months, rotating the homes where they meet, and enjoy camaraderie and good cooking. After three to four months, the groups dissolve and new groups are formed but the friendships last forever.

In 2011, the Grazers had as its goal to involve more newcomers to the church. To that end, it has been very successful with the number of persons partaking reaching 110 persons participating (that is a 20% increase over 2010). The goal for 2012 is to continue this momentum. If you are interested in joining this fun group, just contact Trish and Jim Reynolds.

Trish and Jim Reynolds
Co-chairs

Green Team

The Green Team has expressed many hopes for our church to do the work of caring for God's creation. Among the activities were an Earth Day program, an impromptu caulking for our Parish Hall, a change to more sustainable products in the kitchen(many thanks to all those who wash dishes), information about why and how to recycle, and efforts to make both our new and existing building more energy efficient. We also created a new designated fund for the church which will allow people to donate toward activities of the Green Team, including making the church a better steward and helping others through outreach. We were given a \$5,000 grant from the Human Hurt and Hope Fund to make our local homeless shelter, the Friendship House, more energy efficient. We hope to find a way to do some recycling at our church and welcome any ideas.

The changes are not easy but we are committed to becoming better stewards. The most effective way to save on our energy use (and bills) is by conservation alone! We look forward to a more successful 2012 and invite all of our faith community to join us in acting in ways that protect, heal and honor the integrity of God's creation.

Amy Nicolson

HouseRaising Volunteers

During early 2011 several volunteers from our Church helped redo the Hurlburt-Johnson Friendship House kitchen. In addition we managed to qualify a young Clay County family for one of our homes. Delays in permitting the site for their home has moved the construction date into 2012. Parishioner support when we begin construction will be greatly appreciated.

Fred King

Intercessory Prayer Team

A small but dedicated intercessory prayer team meets each Thursday morning at 11:00AM to pray intentionally for the Healing Ministries of Good Shepherd. Prayers are offered specifically for the River of Healing Chapter of the Order of Saint Luke the Physician and the ministries which have developed as a result of this chapter.

These include:

- Soaking Prayer Services, Tuesday 7:00PM
- Generational Healing Services
- Healing Eucharist Services, Thursday 12:00
- Sunday Prayer Ministers following Eucharist services
- Healing Winds Conference, Lake Junaluska, September 2012
- Region 3 OSL Conference, St Simons, May 2012
- Individual Prayer Appointments
- Scheduled Prayer Retreats
- Healing Missions
- Diocese of Durgapur, Church of North India
- Bishop Probal Dutta and Clergy
- All Saints Church, Kharagpur, India

Prayers are also offered for the following Good Shepherd ministries:

- Stephen Ministers
- Altar Guild
- Daughters of the King
- Flower Guild
- Vestry and their families
- Church Youth

And for peace and unity within Good Shepherd

Joyful Noise

It is hard to believe, but we have just completed our fifth year of praising and glorifying God by singing and playing contemporary Christian music. How time flies. Once again God has blessed us with new members, musicians and singers, and it has been a joy to lead the music at services in January, March, May, August and October.

As everyone's schedules vary, it is sometimes difficult to get full participation of all of our members, so we are always on the lookout for new recruits. Please listen to your heart and consider if you feel God calling you to this ministry. We normally practice on one or two Saturday mornings preceding each contemporary service and are very patient with each other. Everyone is welcome. We also welcome suggestions for new songs.

As I reflect on the past year, I would like to thank each person who has contributed his or her special gifts to this ministry. I would also like to thank the congregation for supporting us (joyfully) and give special thanks to Father John for encouraging us, supporting us, allowing us to try new songs and for the privilege of being Joyful in our own special way...and thanks be to our God! It has been a wonderful year.

Respectfully & joyfully submitted by Tom Griffiths

Landscaping and Grounds

The Landscaping and Grounds Committee has worked hard this past year implementing the first phase of the Landscaping plan approved by the Vestry. This first phase was centered around the six gardens located immediately outside the front of the Church. The center piece is the waterfall feature located in the main garden. With the financial support of our Parish and the energetic support of our Committee members, we were able to complete all of the gardens in the first phase of landscaping plan. Signe and I were blessed with the support of our Committee and pray this support continues as Kathleen Holt assumes the role of Committee Chairperson.

Jake & Signe Ehrhart

Lay Eucharistic Visitors

Lay Eucharistic Visitors are licensed by the diocese to take home communion to shut-ins on Sunday afternoons. In addition to sharing these holy gifts, they

provide an extension of warmth and joy from Good Shepherd.

We currently have 13 licensed Lay Eucharistic Ministers. During this past year the LEV's made over 61 visits to 10 families who benefited from receiving home communion.

Respectfully submitted,
Sue LeKites

Lay Ministries

Once again, the Ministry Handbook was updated to include all of the church ministries and the chair people for each one. An addition this year indicates who the Vestry liaison is for each Ministry. We held a Ministry Fair in September to coincide with the church's stewardship campaign. Attendance was very good and many people signed up to join a chosen Ministry. The mission statement of Good Shepherd truly comes alive in the many Ministries.

Respectfully submitted,
Sue LeKites

Lectors/Prayers

The Lectors and Prayers are a very vital part of each service at Good Shepherd. We now have 19 people alternating at the 8 a.m. service and 25 people alternating at the 10:45 service. We would welcome more volunteers for both services. We thank all those who are so faithful each and every Sunday.

Paul Jordan, Chair

Library

The Good Shepherd library has over 900 items which include several different formats - books, pamphlets, videos, 8-trac tapes and three tape players. The library is arranged according to the Dewey decimal system and is totally automated including an online card catalog with directions to access it. Most items are classified as Christian in subject matter. We do have a limited number of biographies, and some Christian fiction. We also have a large reference section.

Even though we are a budgeted ministry, we are glad to receive appropriate donations.

We have no formal hours and no staff but the library is always open for browsing. To check something out just sign the pad with your name and the bar code (upper left front) number.

Kay Covode
Librarian

Meals for Friends

WARM HEARTS DELIVERING HOT MEALS TO THOSE IN NEED

The Senior Center of Clay County prepares 85 meals a day, 5 days a week, and on Tuesdays the good people of Good Shepherd Episcopal Church deliver 40 midday meals on three routes in Clay County. Meals are individually packaged and stored in heated bags. Detailed directions to each home are easy to follow and the grateful recipients are the blessings of the day. For some this meal is the only hot meal of the day. Please remember this is a five day a week program so if you are unable to participate on Tuesdays but have time other days contact Marie at the Senior Center at 828-389-9550 to volunteer.

Thank you to all those who volunteered this year! Without you the program would not be as successful as it is. If you would like more information or to volunteer, please contact Sharon and Charlie O'Dell or Karen and Alan Sirmans. We will be glad to drive you on the routes to familiarize you with the routine.

Thank you,
Sharon O'Dell

Memorial Garden

The Memorial Garden has been a work in progress for most of the year. Since resuming the care a stump has been removed and a general clean-up has taken place. The plants are beautiful and a feeling of sanctuary is evident. It is a lovely place to visit and meditate on the lives of our loved ones. Anyone interested in pulling weeds, blowing leaves, trimming shrubbery, planting a favorite flower, or spending a few quiet moments is encouraged and welcomed to do so. Thanks to the Family of Ellie Wilson for a donation to the upkeep of this sacred place.

Paul Jordan, Chair

Men's Association

The Good Shepherd Men's Association is a group of men that is actively involved in serving our parishioners and the community. Approximately 30 men regularly attend our scheduled meetings on the first Saturday of each month at 8:30 AM in the back room of Hayesville Family Restaurant in Hayesville. Our services in the last year have included work on the undercroft renovation, gardens, moving the church back into the new facilities, helping extensively with Country Fare and moving a few parishioners into new homes. The Men's Association also supports the Building and Grounds Committee when it's time for a clean-up and several of our

members are active with the House Raising Volunteers. All men are welcome to join us in prayer, Christian fellowship and service as the compassionate hands and feet of our Savior. For work requests, please contact the Pastoral Care Coordinator at the Church office.

Joe Rybicki

Mountain of Faith Fund

The Mountain of Faith Fund is a repository of funds from donors whose intent is to support the church's needs beyond those satisfied through our operating budget. Its charter recognizes it as an endowment fund.

Its monies come from donations of current parishioners, and from gifts made through the estates of former parishioners.

The Fund balance now stands at \$81,733. Included in this total is a non-interest bearing loan of \$25,000 made by the Fund to the Church of the Good Shepherd in support of the recent capital campaign.

Donations to the Fund can be used for general capital needs or may be designated for specific purposes. For example, in 2011 and at the family's request, a gift from a parishioner's estate was allocated partially to the memorial gardens.

Mountain of Faith members, as shown on the plaque in our narthex, are recognized, honored and remembered for having committed in their estates to make, or for already having made, such a gift. We encourage everyone to consider doing – as a memorial to a loved one, in support of a particular ministry or for the general, longer term but perhaps not-yet-foreseen needs of our parish.

Lou Lanwermeyer
President
Mountain of Faith Fund

Nursery

Nursery care for infants to children age 5, offered by a generous group of volunteers, has been available from 10:30 am through the passing of the Peace at the 10:45 service. We have had months with 1 child to care for, and months numbering 20 children; 10 were in attendance on Easter Sunday, 2011, average was 7 children per month. Thank God for the children and volunteers alike and for the wonderful space for their care.

Barbara Lanwermeyer

Office Volunteers

A dedicated group of volunteers answers phones as well as helping with stapling, folding and stamping of booklets and mailings and many other tasks that help to make things run smoothly in the office. We are so appreciative of their help.

Lynne Joynes

Order of St. Luke the Physician, River of Healing Chapter

The River of Healing OSL Chapter meets on the 3rd Thursday of each month at 9:00 AM at the church. We share God Moments, prayer concerns, take time to pray for one another, and this time of prayer & sharing empowers us to go out into the world to pray and heal others in Jesus' name. This year the Chapter also studied Christian Healing: A Practical and Comprehensive Guide by Rev. Mark Pearson. We praise God for such a productive year.

OSL Prayer Ministers pray for healing during soaking prayer on Tuesday evenings, confidential healing prayer for individuals, healing prayer at the Thursday noon services, and also during communion at the 10:45 am service on Sundays. Prayer continues with Dr. Johnson's patients.

In January/February 2011, Carolyn Griffith and Kay Covode returned to India on another two-week healing mission. They participated in a two day "Festival of Joy" in Perulia which included teaching and evening prayer services. God was greatly glorified.

Anne Mitchell was also on the trip and brought OSL to the Diocese of Durgapur. She taught on how to teach Jesus' Healing Ministry to a group representing several different denominations in the area. Fr. John received a grant from the North American Board of OSL to lay the foundations for the first OSL Chapter in India.

Again this year Healing Winds Conference was held at Lake Logan the third weekend in October. The conference was well attended by individuals from many different denominations. OSL members from our chapter and the Mountain Chapter in Asheville participated as Prayer Ministers. The Rev. Nigel Mumford was our remarkable speaker/teacher and for the second year we enjoyed the gifted music of Marji Elsey. A special thanks to Maggie Carnes for her talent in making Healing Winds a holy time for us all. Maggie has retired as chairperson of Healing Winds, and OSL members Ivey and Linda Wingo have assumed the leadership position.

Joe Rybicki will be the Convener for the River of Healing OSL Chapter in 2012.

“ . . . it is life to those who find it (word of God), and healing to all their flesh.” Proverbs 4:22

Kay Covode, 2011 Convener

Outreach Committee

Our church has again produced another unprecedented year in our outreach program. The committee was blessed with a grant of \$4000.00 along with the Vestry allocation of \$21,000.00, plus a Country Fare total of \$11,000.00 for a total of \$36,150.00.

These amounts were distributed as follows:

Organization	Total
1. CC Food Pantry	\$5,950.00
2. TC Food Pantry	\$4,150.00
3. Samaritan's Promise	\$800.00
4. CC Com in Schools/Hands of Hope	\$2,700.00
5. TC Family Connection	\$2,500.00
6. Hurlburt Johnson Friendship House	\$5,100.00
7. REACH	\$1,750.00
8. SAFE	\$1,750.00
9. St. Vincent De Paul	\$1,350.00
10. Mountain Home Nursing	\$250.00
11. Far West Families First	\$200.00
12. HAVEN	\$1,600.00
13. David's House	\$200.00
14. CC Hearts for Kids	\$1,250.00
15. TC Drug Coalition	\$700.00
16. CC Fire Dept.	\$300.00
17. Thanksgiving Baskets	\$150.00
18. DeSoto Square	<u>\$50.00</u>
Total	\$30,750.00

Our Parish also continued to support our outreach efforts in helping out at the CC Food Pantry, Shrove Tuesday Pancake Supper, DeSoto Square, School Bags for Kids, CROP Walk Meals on Wheels, Thanksgiving Baskets, Closet of Love, Alternative Christmas and The Angel Tree. Thank you, people of Good Shepherd for your generous and unselfish willingness to help others.

In Christ's Service,
Paul Jordan, Chair

Parish Life

In February Parish Life provided Desserts, coffee, assorted drinks for the Art Appreciation Show. On March 11 – 12 Parish Life helped cook and set up food for the Church Kick off from 2 – 4pm. On April 9 - 10 we set up, bought and cooked the meat selection and made ready the hall for the Bishops blessing for the

newly finished construction of the parish hall and other parts of the church building. On April 24th Parish Life provided the meat, cooked and executed an Easter Brunch after the 10:45 service. In May and August of 2011 Lakeside Services were conducted with Parish Life set up and provided the Bar B Q meat, baked beans, chicken and drinks while everyone brought different dishes to add to it. Food for the noon luncheon was hosted November 6th for the Parish Elders. Parish Life also donated money for the storage units which were used during the building process.

Pam Roman

Pastoral Care

The Pastoral Care Ministry is composed of volunteers who help parishioners when needs arise during times of illness, hospitalization, grief, or other problems. During the past year I have called upon and scheduled volunteers to drive parishioners to church and doctor's appointments and to provide respite for care givers. Most requests of this nature are filled by parishioners for each other, but there are times when it is comforting for a parishioner to know he or she can call the office to ask for help. We have three ongoing Care Teams composed of 11 parishioners who regularly help another parishioner. In addition, we have a meal program called "Feed Our Flock" for parishioners returning from the hospital or in special need. This program has been very successful. I appreciate your willingness to volunteer for the many ways that we help parishioners in need.

Respectfully submitted, Sue LeKites

Prayer Chain

The Prayer Chain currently has over 48 members. Most prayer chain requests come through the office and I email the members. We receive anywhere from three to ten prayer requests and updates each week.

The prayer chain team is a highly dedicated group, who take their ministry seriously. They also keep the prayer request information confidential. Please feel free to call or email me to request prayers or to become a member of this team.

Respectfully submitted, Sue LeKites

Prayer Shawl Ministry

The Ministry welcomed several new knitters this year and since we had our first shawl blessed on March 7, 2004 over 600 shawls have been given. Many, many thanks to all our knitters; without your help we could not send the love of the people of Good Shepherd to those in need of support with a tangible gift of love. For those thinking of joining the ministry, in need a refresher course or instruction in order to be a part of this prayerful ministry, please join us any second Monday in the Dogwood Room at the Church; instruction is always available at our meetings. If you don't feel called to knit or crochet, you can still participate by requesting a shawl or making donations to the ministry for us to buy supplies for more shawls.

The Prayer Shawl ministry thanks David Smucker and the Building Construction Planning Committee for working out a place in the new Dogwood Room for our yarns and shawls to be stored. We also thank Jerome Laux for making us the Knitting Needle Cross Plaque for our closet door. Stop in and see the cross, it is really unique.

May all your threads be blessed,
Elizabeth Rybicki
Prayer Shawl Coordinator

School Bags for Kids

Each year Good Shepherd Episcopal Church has a "School Bag Brunch", consisting of Pancakes, Sausage and Drink for the price of taking and filling a brown paper bag with a list of much needed supplies for students in Clay and Towns County Schools. This year we were once again able to do this in our new Parish Hall. Approximately 84 bags were filled and returned. This year the CC Communities in Schools and Towns County Family Connections Directors picked up the bags at the church and delivered them to their respective schools. Approximately \$250.00 was given to each of the organizations from donations collected. Pat and Paul Jordan and The Outreach Committee thank all of you who so generously donated these items so that each and every student had the supplies available to make this school year a most enjoyable and successful experience.

Pat and Paul Jordan, Co-Chairs

Sexton

The following projects/tasks were completed:

- Installed shelving in kitchen
- Installed shelving in center closet of Parish Hall
- Installed floor cleats for center closet of Parish

Hall for tables

- Installed altar hangings/banner rack in Sacristy
- Replaced light fixture in Sacristy
- Installed AV shelves in Dogwood room
- Moved refrigerator, freezer from kitchen to present storage area in lower level
- Cleaned out refrigerator and freezer
- Serviced HVAC systems
- Programmed HVAC systems
- Replaced condensate pump for the Sanctuary
- Plumbed drain lines for condensate for the office/Narthex HVAC system
- Replaced cracked seat boards for two pews
- Repaired modesty panel on right side of Nave, reset and replaced screws
- Replaced light bulbs in Sanctuary, including altar area
- Replaced numerous light bulbs in Narthex, other areas of church
- Supervised the replacement of fan motor for Kitchen/Hall/Nursery HVAC system
- Hung numerous pictures, plaques and hangings throughout the church and parish hall
- Hung signage in Narthex
- Organized Sextons closet somewhat
- Moved all of the paint and stain products from lower elevator lobby to Sextons closet
- Moved booths from the bookstore to lower elevator lobby
- Made and hung Shaker pegboard in vesting area for chalicists and crucifers
- Replaced light fixtures in Sanctuary
- Cleaned ice maker initially, cleaned ice maker for semiannual cleaning
- Purchased supplies for church as needed

Jerome Laux

Shrove Tuesday Pancake Supper

This year's Shrove Tuesday Pancake Supper was a huge success and a real treat to have been the first big event held in our new Parish Hall and cooked in our new kitchen. It was well attended and the kids did an outstanding job of taking care of our customers. The proceeds went to the Youth and 100 Strong at Hayesville High School. Expenses were \$400.00. New signs were purchased for the road. We cleared about \$1200.00. This was as usual a very rewarding and fun experience. Thanks to so many who helped make this such a great success.

Paul and Pat Jordan

Stephen Ministry

The Stephen Ministry provides one on one caring relationships by trained lay parishioners with parishioners who are going through a physical or emotional crisis. Stephen Ministers care, listen, and share God's love with their care receivers. We have three Stephen Leaders; (Barbara Brewton, Toni Moral and Sue LeKites) and 10 active Stephen Ministers; (Patty Bilitzke, Henry Brock, Tom Griffiths, Suzi Herbert, Candy List, Sandy Lupole, Marilyn Pierce, Judy Steinbauer, Mary Strange and Kathy Wright) and one inactive Stephen Minister, Harry Baughn. Six new Stephen Ministers received 50 hours of training during 2011. During 2011 Stephen Ministers worked with 18 care receivers. We welcome new Stephen Ministers and care receivers.

Respectfully submitted,
Sue LeKites

Stewardship

The Stewardship Team had an active fall 2011. The team consisted of Brad Rouse, chair, Andy Dickert, David Gribble, Suzy Christensen and Kurt Hoffman. A plan was developed during the month of August and implemented during September through December. The materials for Stewardship were reworked from the previous year. The most significant change was the development of a "narrative budget" in conjunction with the finance committee. This took the form of a planning budget which was broken out by church ministry with a discussion of the major items for each ministry. The two page narrative version of the planning budget was included in the mailer to all parishioners and received very positive feedback from members of the parish. The stewardship materials were also reworked to include a guide to giving with suggestions for increases that would help us achieve the 12% increase we were hoping for. There were several mailings to parishioners, notices in the bulletin, articles in the newsletter, and testimonies during the worship services. We included a "stewardship reflection" consisting of a related verse from the Bible in the bulletin for the duration of the campaign. The team also sponsored a special coffee hour on Stewardship Sunday. The results of the campaign resulted in an increase from 2011 with 2012 resulting in 122 pledges received for \$260,825 versus 123 pledges received for \$252,183 for 2011.

Brad Rouse

Ushers and Oblation Bearers

At present count there are thirty-six volunteers on the year-ending 2011 Ushers Roster. Five of these attend the 8:00 am service and rotate to insure full coverage.

For the 10:45 service there are thirty-one on the roster. Several are also either in the choir or on other rosters for greeters, chalicists or nursery duty and need to be scheduled to avoid conflicts. There is no active roster for oblation bearers as they are chosen by the ushers on duty. Instructions for both the ushers and oblation bearers are located in the right-hand drawer of the large piece of furniture (Spencer) in the Narthex.

Joe Rybicki and I make an effort to be present every Sunday to ensure that the ushers are aware of their duties. We now have written procedures for the ushers to follow for each special service through out the year.

Respectfully,
John Covode

Wedding Coordination

We have not had any weddings this year. We have added to our committee Pam Roman who is extremely talented with flowers and catering food for receptions. Robin Bair who has been involved in the planning and Candi List has shown interest in being a part of this committee. We certainly welcome anyone who is interested in making our church family Weddings a spiritual and memorable experience. Blessings and thanks to all you have helped.

Pat Jordan, Coordinator

Welcoming/Greeters and Newcomers

The committee's primary responsibilities are:

- 1) make all church visitors feel welcome and encourage them to return,
- 2) identify frequent visitors and find out where their interests lie,
- 3) introduce them to the ministries of Good Shepherd and to other members that have similar interests,
- 4) notify committee chairs of their interest,
- 5) follow up.

During 2011 visitors were greeted as they entered our church by a pair of greeters. As they left the church they were given a visitor bag which contained brochures about the Episcopal Church and Good Shepherd plus a loaf of bread. Fifty visitor bags were handed out during the year. Several frequent visitors were interviewed and 27 became members.

Thanks go to our greeters, Tom Griffiths who coordinates the greeters and bakes the bread, Carolyn Griffiths who prepares the greeting cards that go in the visitor bags, Ruthanne Chesebro who prepares the visitor bags, and Betsi Wilson who helps in many ways.

The growth of our church is dependent to a great extent on encouraging people to visit our church and on making all visitors feel welcome. This is a responsibility of every member of Good Shepherd. When you see a stranger, introduce yourself. If you see someone struggling with the liturgy help them out. Treat visitors and new comers to our church the way you would treat visitors to your home.

Respectfully submitted,
Jane and Doug Stuart, Co-chairs

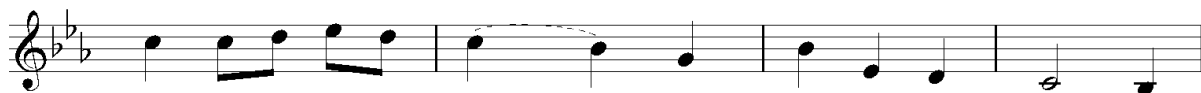
Be thou my vision



1 Be thou my vi - sion, O Lord of my heart;
2 Be thou my wis - dom, and thou my true word;
3 High King of hea - ven, when vic - tory is won,



all else be nought to me, save that thou art—
I ev - er with thee and thou with me, Lord;
may I reach hea - ven's joys, bright hea - ven's Sun!



thou my best thought, — by day or by night,
thou my great Fa - ther; thine own may I be;
Heart of my heart, — what - ev - er be - fall,



wak - ing or sleep - ing, thy pres - ence my light.
thou in me dwell - ing, and I one with thee.
still be my vis - ion, O Ru - ler of all.

Slane, Irish ballad melody; adapt. The Church Hymnary, 1927; harm. David Evans (1874-1948)
© Music: By permission of Oxford University Press. Reprinted under One License.net #A-707862