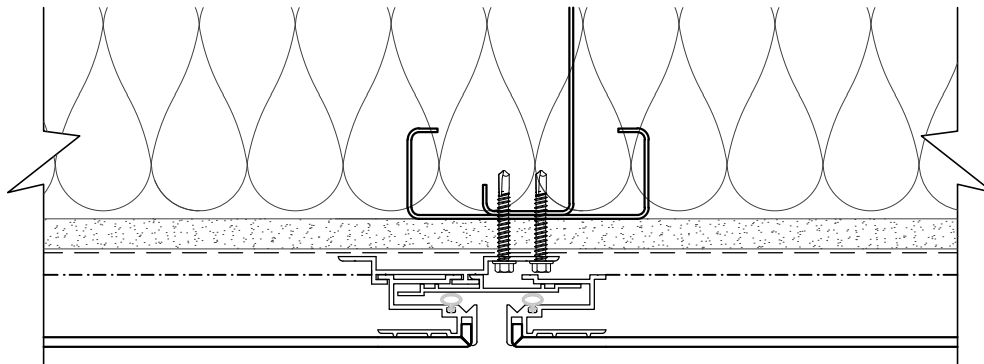


**SKYLINE
SHEET METAL**

SSMPER



PRODUCT DESCRIPTION:

Skyline Sheet Metal Pressure Equalized Rainscreen (SSMPER) wall cladding panels are manufactured from 4mm **composite sheet material CNC routed and formed over an extruded aluminum mounting frame. The panels are mechanically attached with floating clips over a weather barrier to the stud framing of the structural wall and are finished with $\frac{5}{8}$ " joint reveals.

FEATURES and BENEFITS:

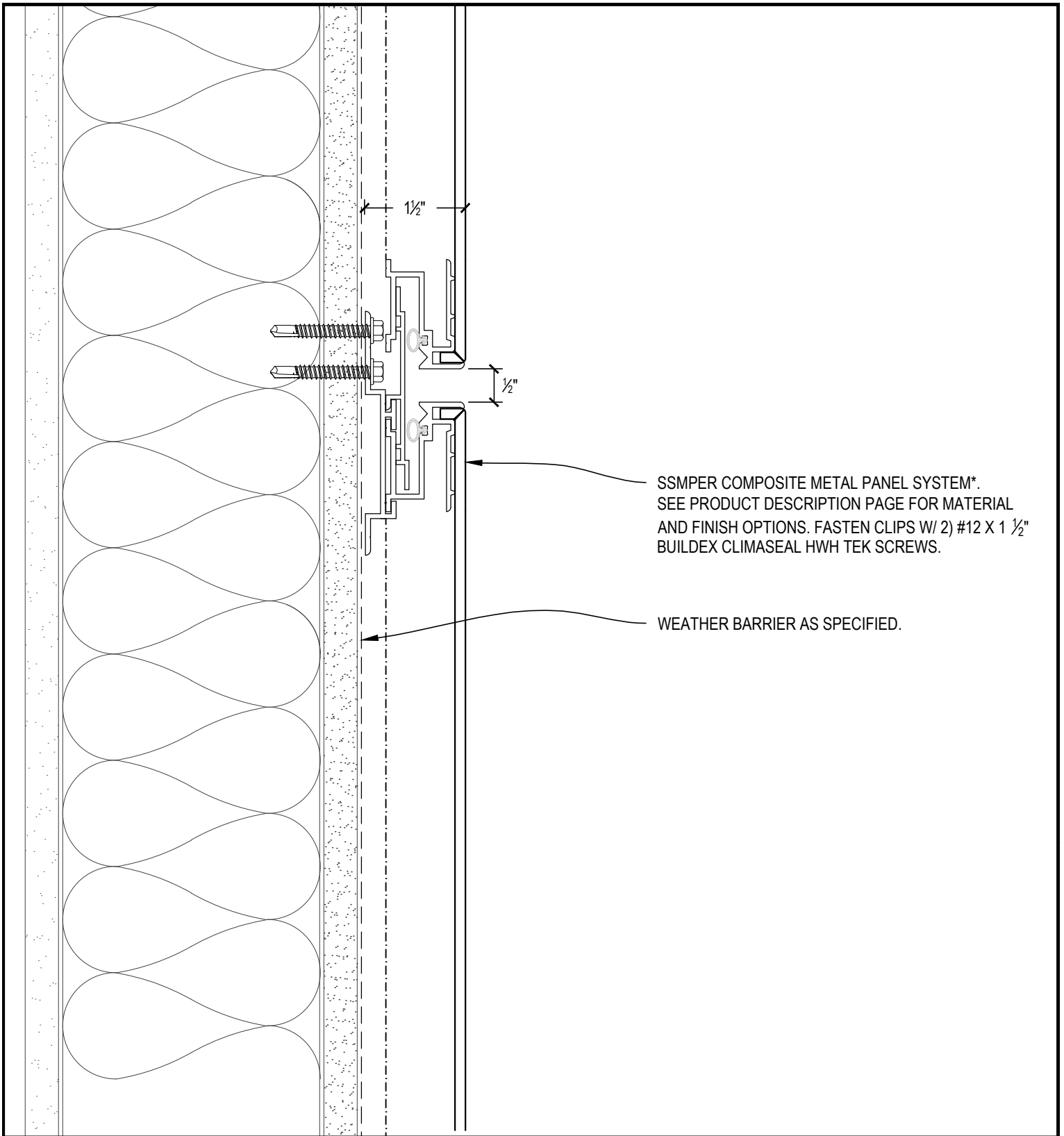
- Open Rainscreen Principle
- 20 year finish warranty
- Exceptional flatness and deflection resistance
- Lightweight compared to heavy gauge sheet metal

MATERIAL and FINISH OPTIONS:

- (**CM) Composite Material: Extruded thermoplastic core bonded between two thin metal sheets.
- Aluminum (ACM) Coil-coated available in Std. and Custom colors, Timber, Stone, Prismatic.
- Stainless Steel (SCM)
- Copper (CCM)
- Titanium (TCM)
- Zinc (ZCM)

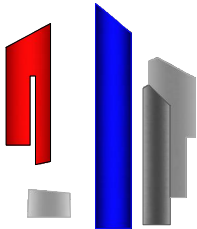
www.skylinesheetmetal.com

1535 NW SUNDIAL RD TROUTDALE, OR 97060 PHONE 503-669-1156 FAX 503-666-8189



SSMPER COMPOSITE METAL PANEL SYSTEM*.
 SEE PRODUCT DESCRIPTION PAGE FOR MATERIAL
 AND FINISH OPTIONS. FASTEN CLIPS W/ 2) #12 X 1 1/2"
 BUILDDEX CLIMASEAL HWH TEK SCREWS.

WEATHER BARRIER AS SPECIFIED.



TYPICAL HORIZONTAL JOINT

SCALE: 6" = 1'-0"

SECTION VIEW

SSMSS PANEL SYSTEM

SHEET

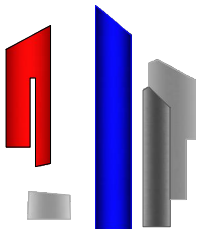
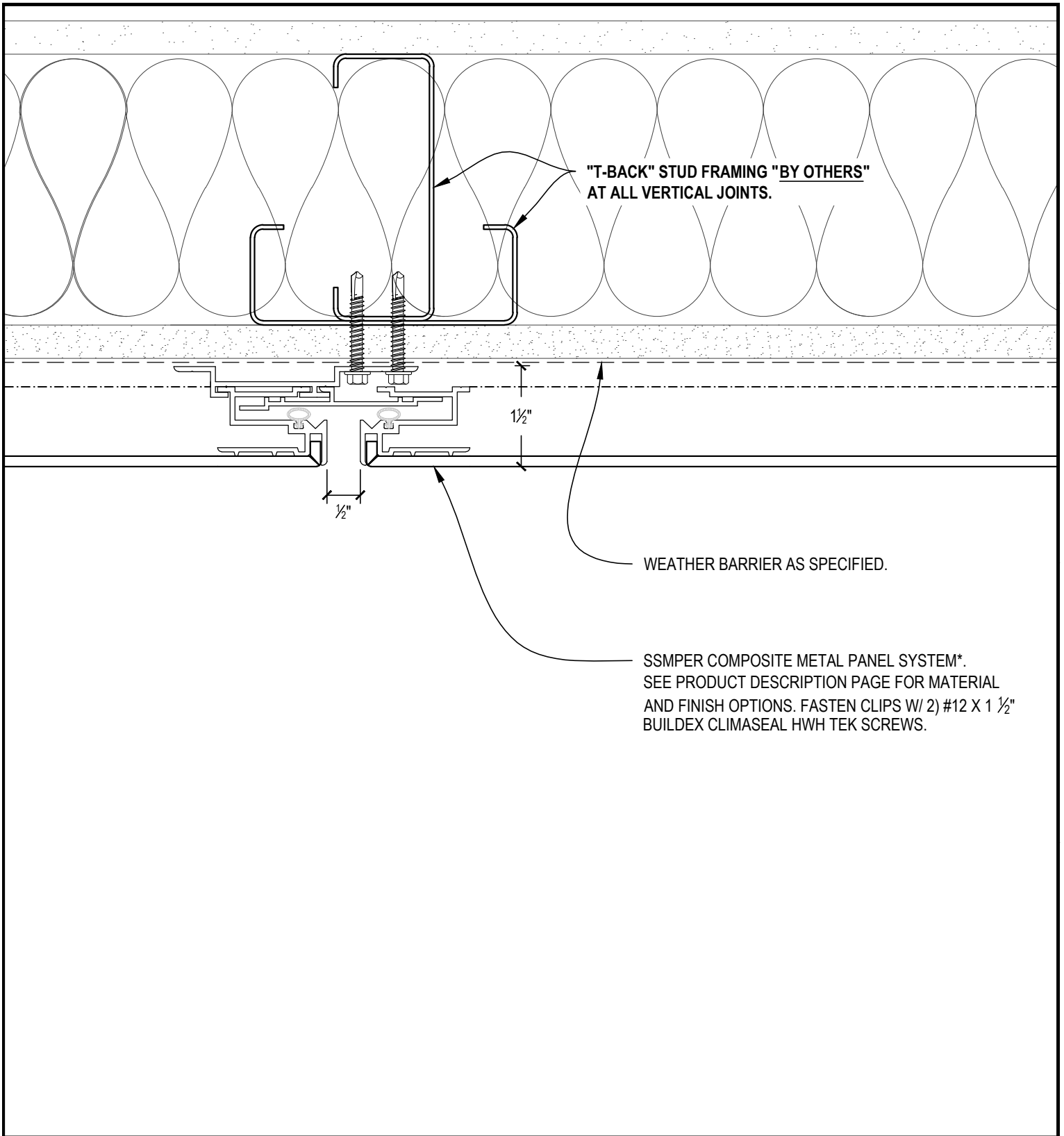


SKYLINE
 SHEET METAL

DATE: 01-01-10

DRAWN: JASON YORK

1535 NW SUNDIAL RD TROUTDALE, OR 97060 PHONE 503-669-1156 FAX 503-666-8189



TYPICAL VERTICAL JOINT

SCALE: 6" = 1'-0"

PLAN VIEW

SSMSS PANEL SYSTEM

SHEET

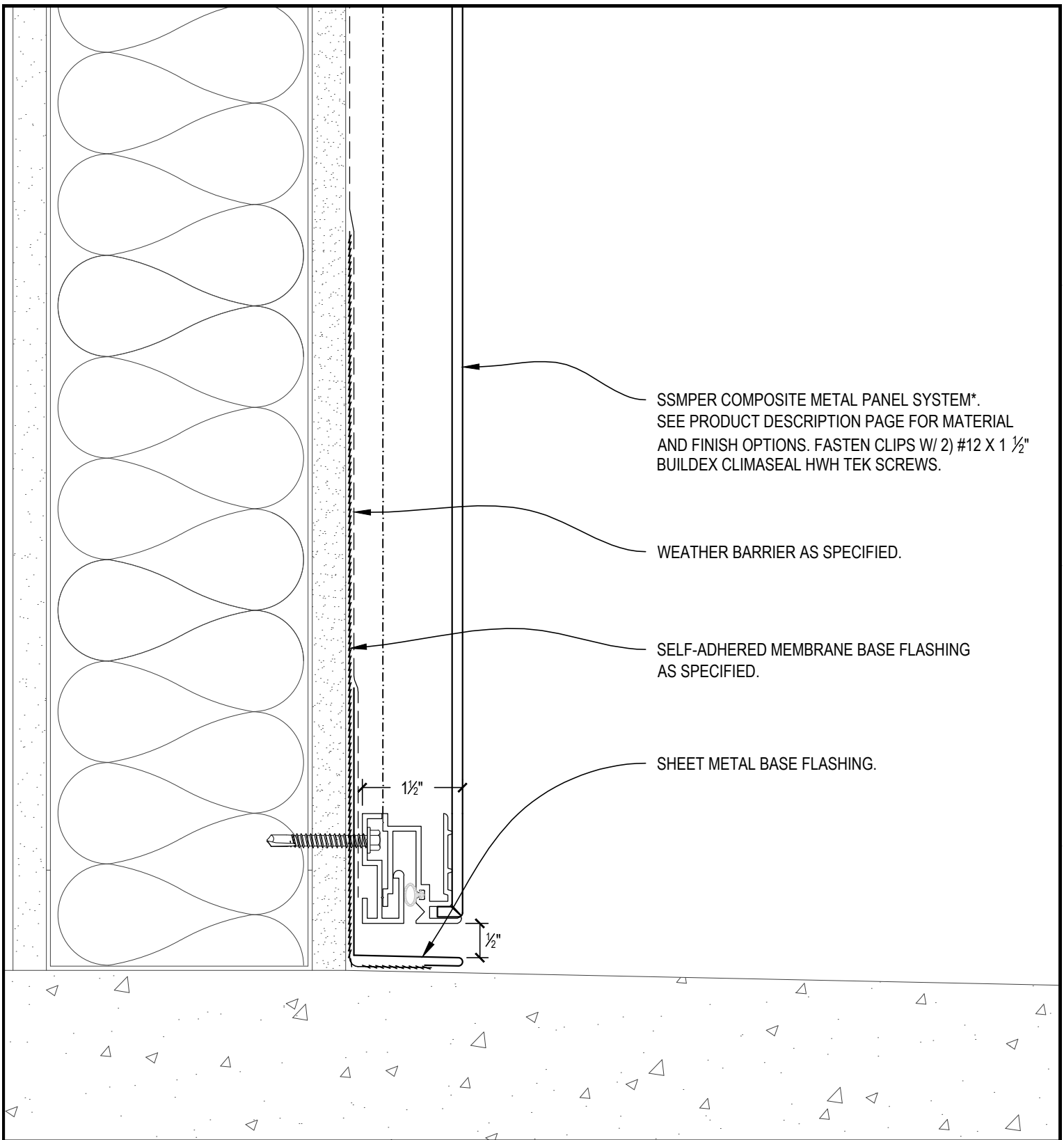


SKYLINE
SHEET METAL

DATE: 01-01-10

DRAWN: JASON YORK

1535 NW SUNDIAL RD TROUTDALE, OR 97060 PHONE 503-669-1156 FAX 503-666-8189



SSMSS COMPOSITE METAL PANEL SYSTEM*.
 SEE PRODUCT DESCRIPTION PAGE FOR MATERIAL
 AND FINISH OPTIONS. FASTEN CLIPS W/ 2) #12 X 1 1/2"
 BUILDDEX CLIMASEAL HWH TEK SCREWS.

WEATHER BARRIER AS SPECIFIED.

SELF-ADHERED MEMBRANE BASE FLASHING
 AS SPECIFIED.

SHEET METAL BASE FLASHING.



TYPICAL PANEL @ GRADE

SCALE: 6" = 1'-0"

SECTION VIEW

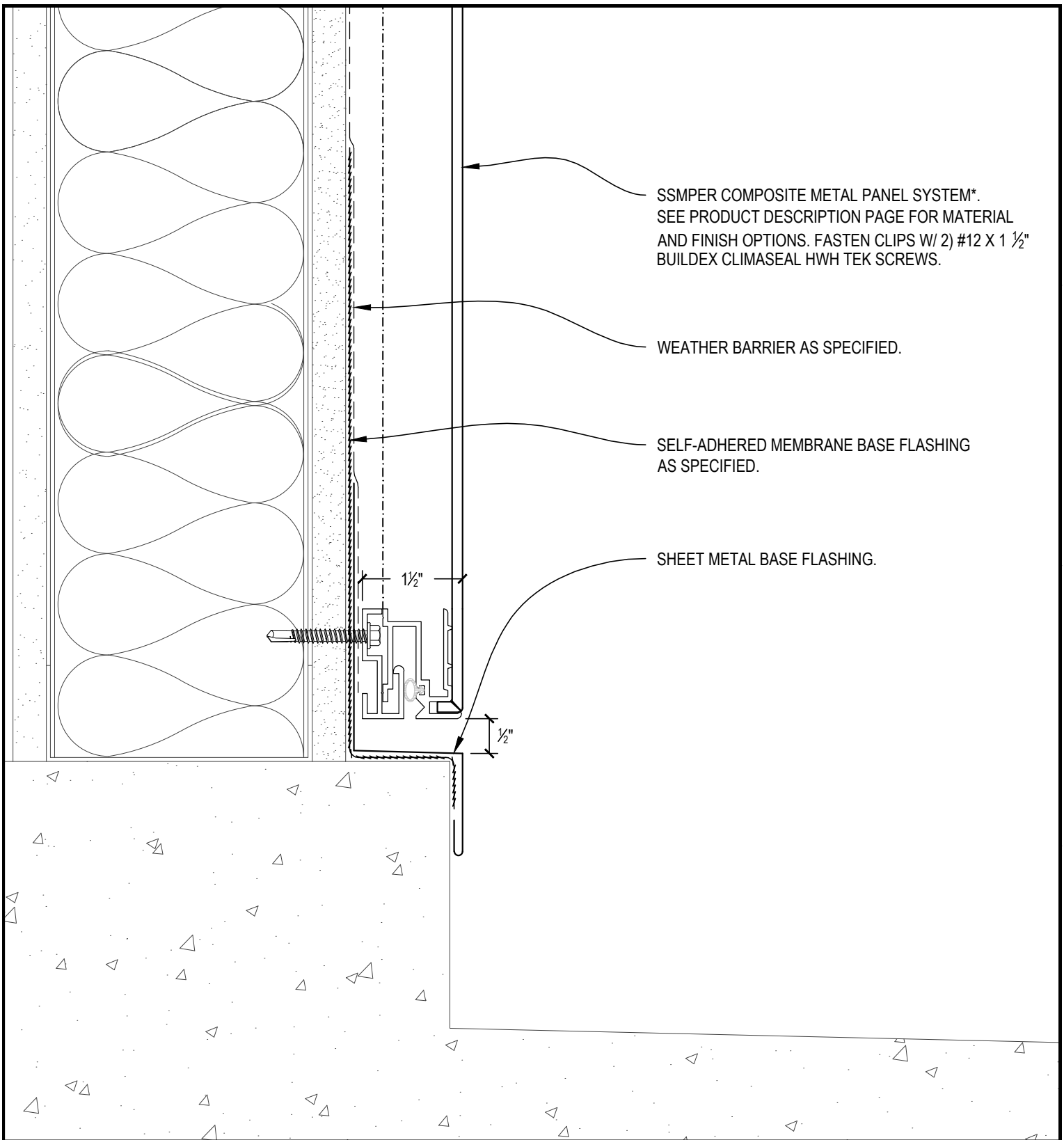
SSMSS PANEL SYSTEM

DATE: 01-01-10

DRAWN: JASON YORK

SHEET



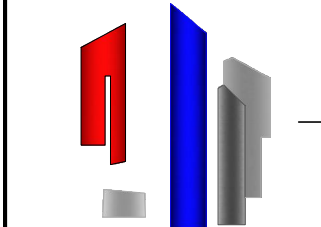


SSMPER COMPOSITE METAL PANEL SYSTEM*.
 SEE PRODUCT DESCRIPTION PAGE FOR MATERIAL
 AND FINISH OPTIONS. FASTEN CLIPS W/ 2) #12 X 1 1/2"
 BUILDEX CLIMASEAL HWH TEK SCREWS.

WEATHER BARRIER AS SPECIFIED.

SELF-ADHERED MEMBRANE BASE FLASHING
 AS SPECIFIED.

SHEET METAL BASE FLASHING.



PANEL @ GRADE--OPTION -A-

SCALE: 6" = 1'-0"

SECTION VIEW

SSMSS PANEL SYSTEM

SHEET

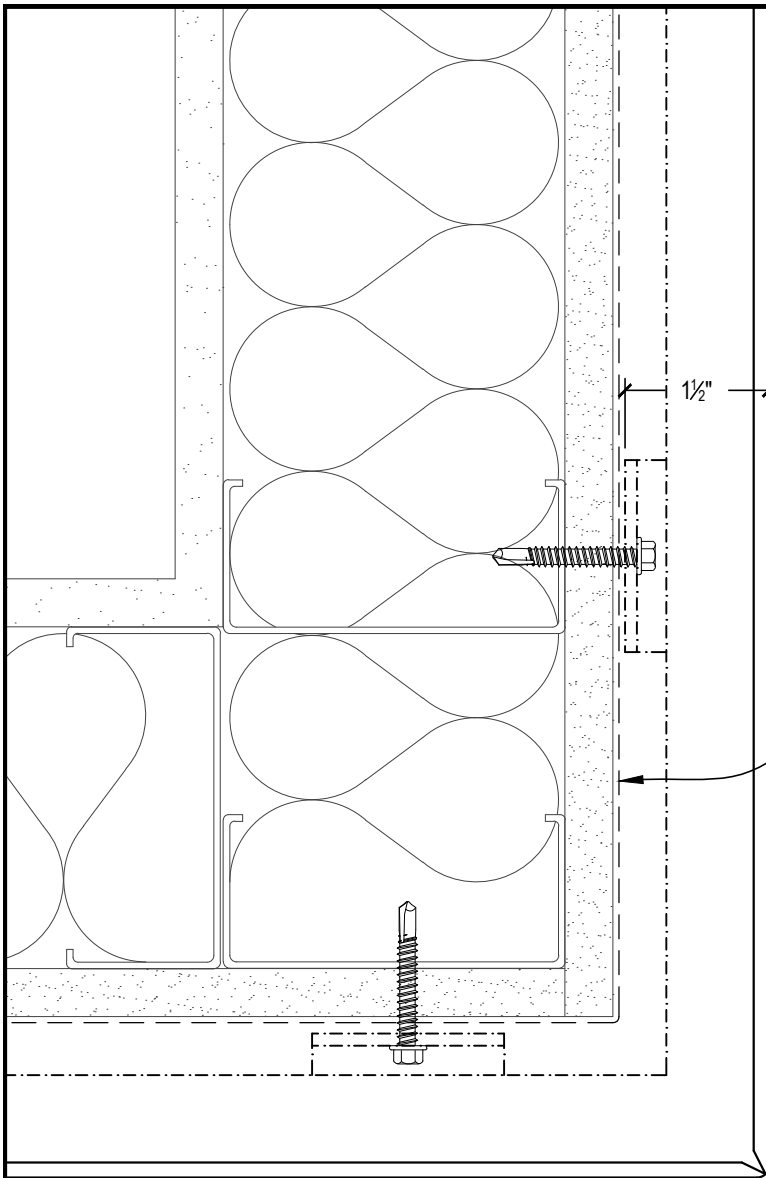


SKYLINE
 SHEET METAL

DATE: 01-01-10

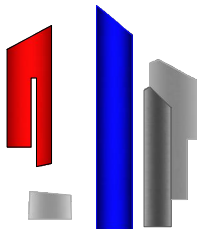
DRAWN: JASON YORK

1535 NW SUNDIAL RD TROUTDALE, OR 97060 PHONE 503-669-1156 FAX 503-666-8189



SSMPER COMPOSITE METAL PANEL SYSTEM*.
 SEE PRODUCT DESCRIPTION PAGE FOR MATERIAL
 AND FINISH OPTIONS. FASTEN CLIPS W/ 2) #12 X 1 1/2"
 BUILDEX CLIMASEAL HWH TEK SCREWS.

WEATHER BARRIER AS SPECIFIED.



TYPICAL OUTSIDE CORNER

SCALE: 6" = 1'-0"

PLAN VIEW

SSMSS PANEL SYSTEM

SHEET

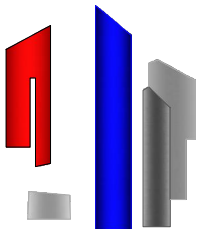
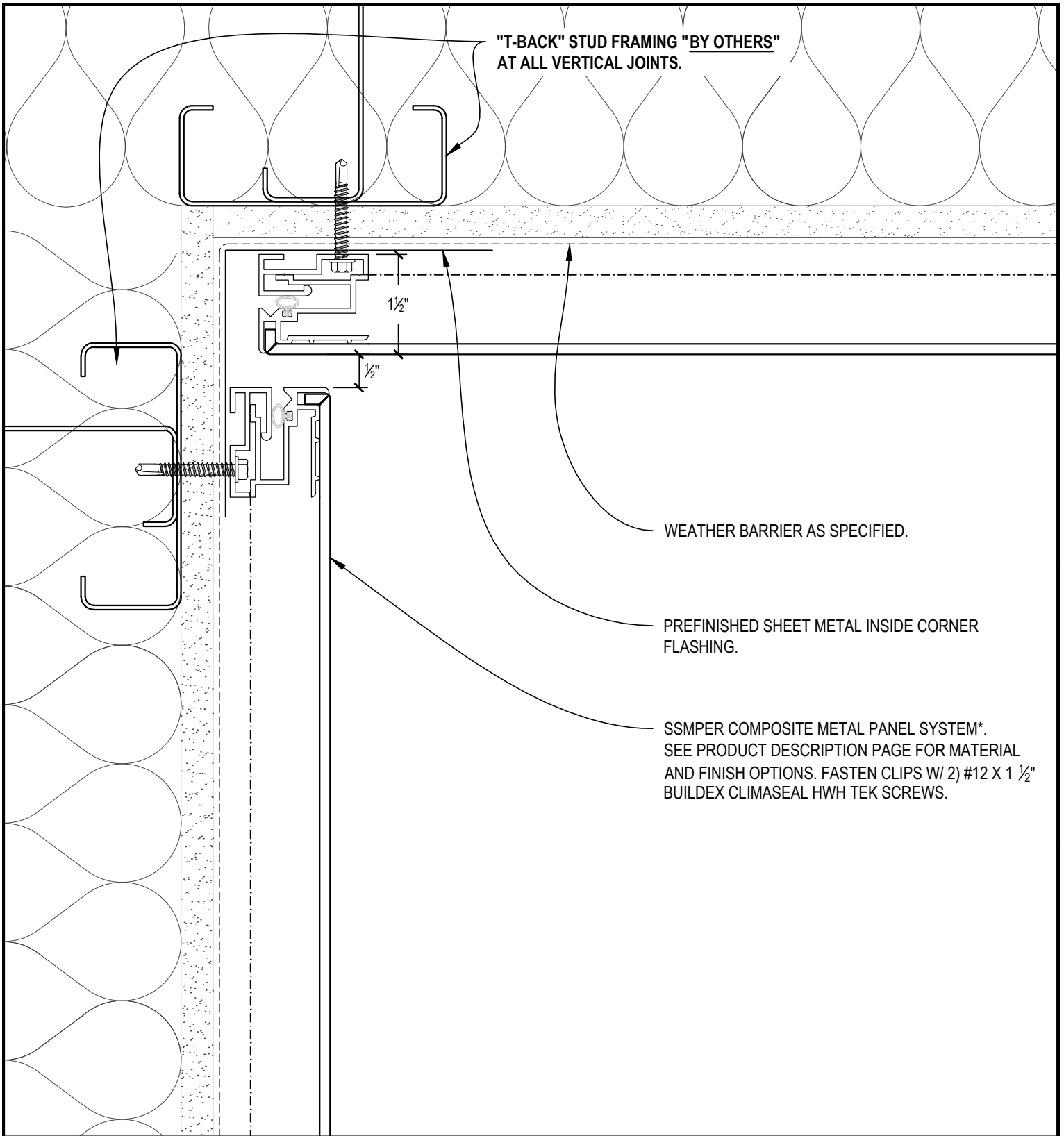


SKYLINE
SHEET METAL

DATE: 01-01-10

DRAWN: JASON YORK

1535 NW SUNDIAL RD TROUTDALE, OR 97060 PHONE 503-669-1156 FAX 503-666-8189



TYPICAL INSIDE CORNER

SCALE: 6" = 1'-0"

PLAN VIEW

SSMSS PANEL SYSTEM

SHEET

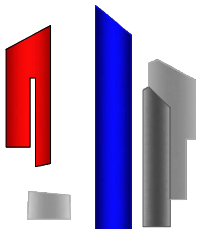
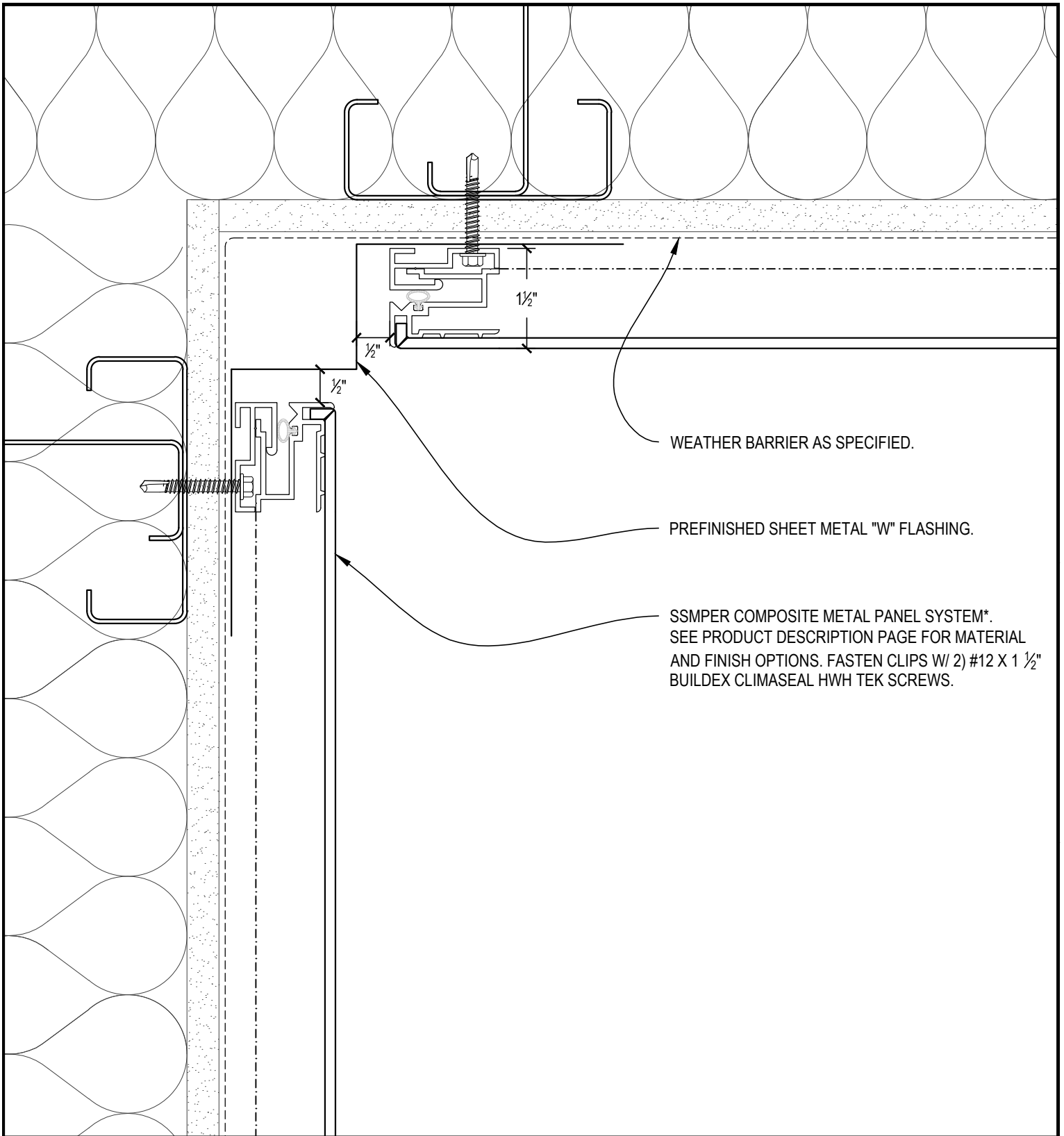


SKYLINE
SHEET METAL

DATE: 01-01-10

DRAWN: JASON YORK

1535 NW SUNDIAL RD TROUTDALE, OR 97060 PHONE 503-669-1156 FAX 503-666-8189



INSIDE CORNER--OPTION -A-

SCALE: 6" = 1'-0"

PLAN VIEW

SSMSS PANEL SYSTEM

SHEET

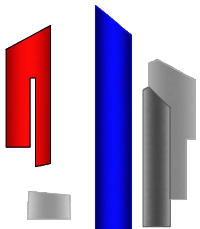
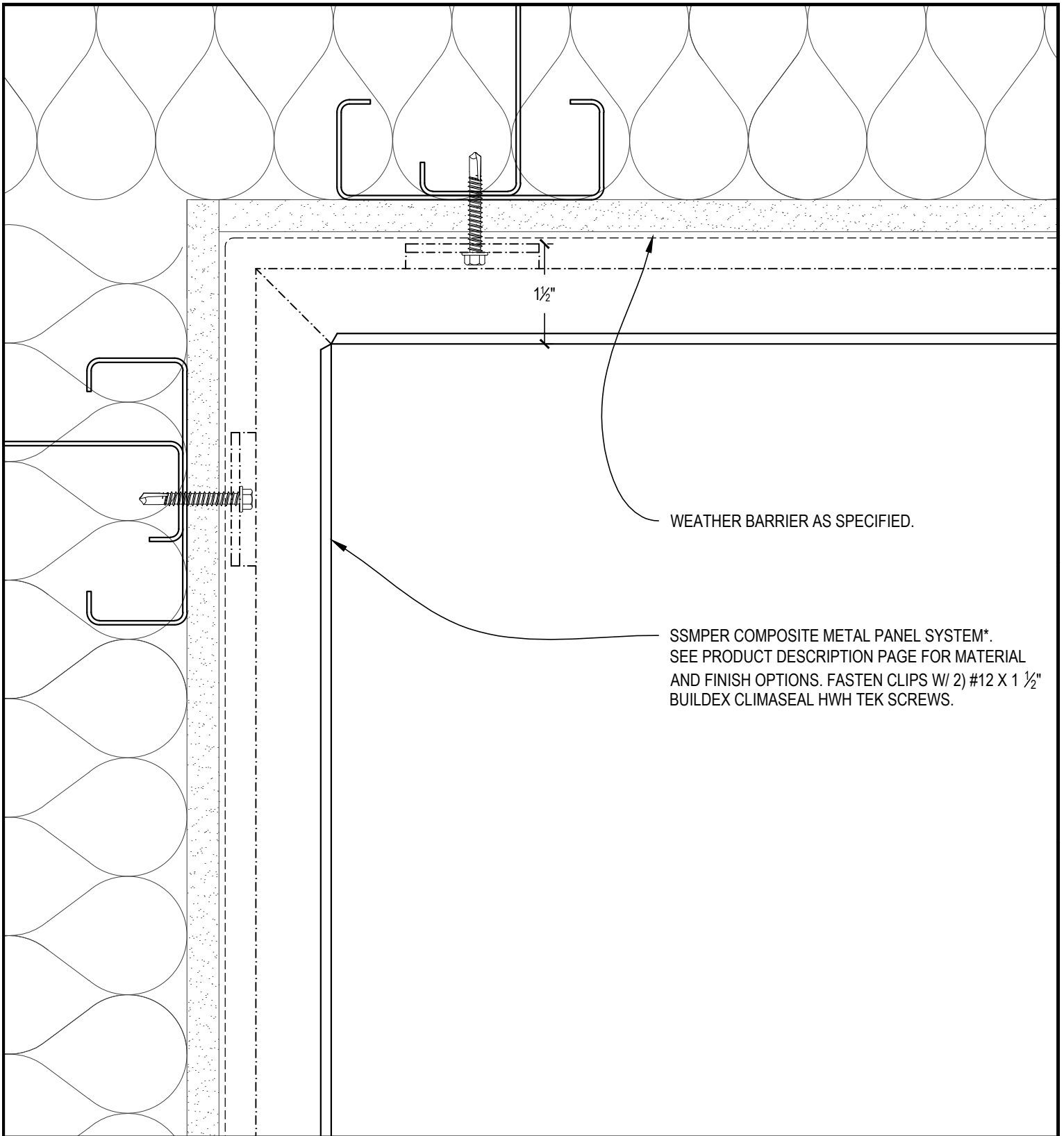


SKYLINE
SHEET METAL

DATE: 01-01-10

DRAWN: JASON YORK

1535 NW SUNDIAL RD TROUTDALE, OR 97060 PHONE 503-669-1156 FAX 503-666-8189



INSIDE CORNER--OPTION -B-

SCALE: 6" = 1'-0"

PLAN VIEW

SSMSS PANEL SYSTEM

SHEET

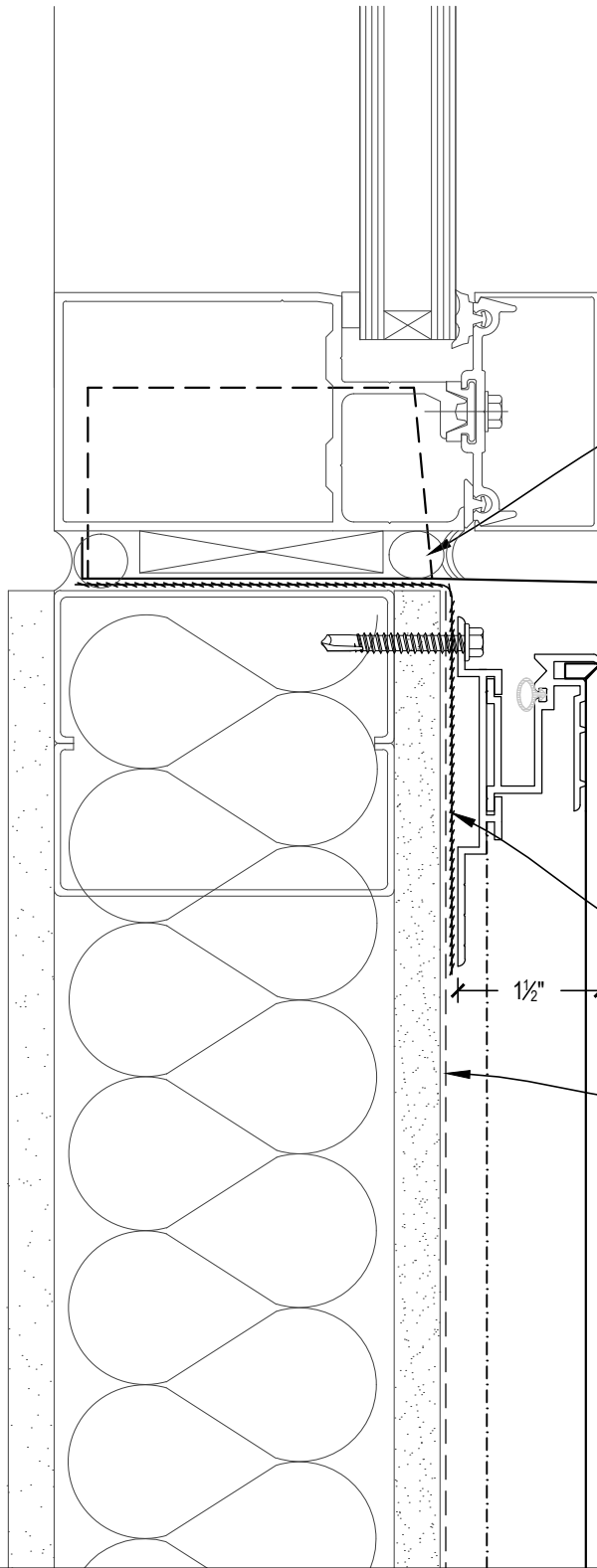


SKYLINE
SHEET METAL

DATE: 01-01-10

DRAWN: JASON YORK

1535 NW SUNDIAL RD TROUTDALE, OR 97060 PHONE 503-669-1156 FAX 503-666-8189



SEALANT JOINT BY OTHERS.

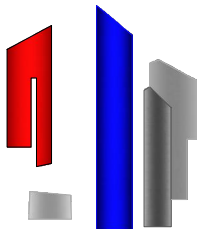
PREFINISHED SHEET METAL SILL FLASHING
W/ 2" END DAMS AND 1/2" BACK DAM.

SSMPER COMPOSITE METAL PANEL SYSTEM*.
SEE PRODUCT DESCRIPTION PAGE FOR MATERIAL
AND FINISH OPTIONS. FASTEN CLIPS W/ 2) #12 X 1 1/2"
BUILDEX CLIMASEAL HWH TEK SCREWS.

SELF-ADHERED MEMBRANE WINDOW OPENING
WRAP AS SPECIFIED.

WEATHER BARRIER AS SPECIFIED.

1/2"



TYPICAL WINDOW SILL

SCALE: 6" = 1'-0"

SECTION VIEW

SHEET

SSMSS PANEL SYSTEM

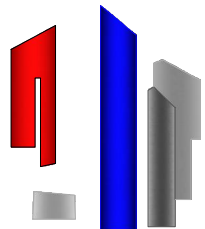
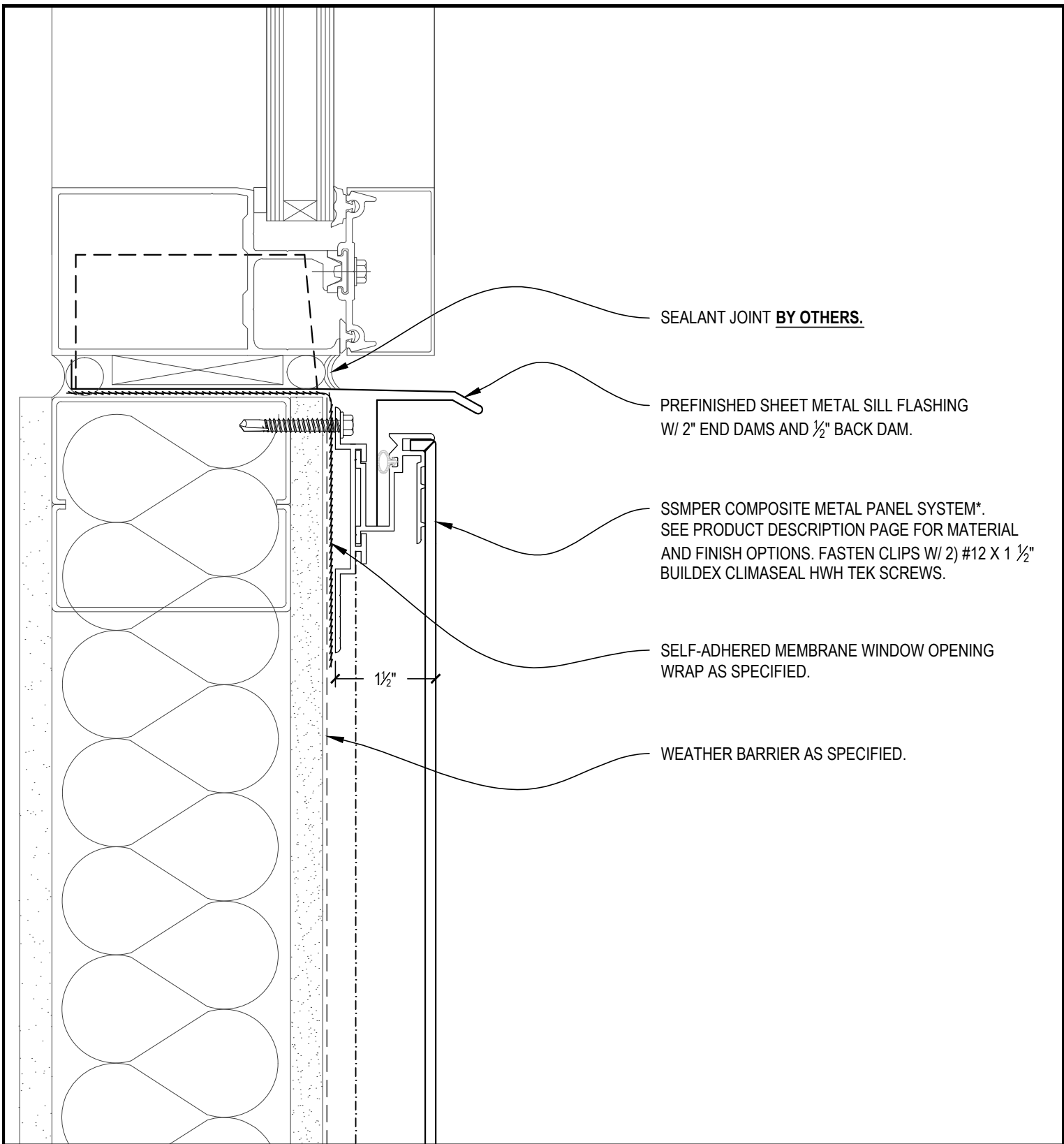


SKYLINE
SHEET METAL

DATE: 01-01-10

DRAWN: JASON YORK

1535 NW SUNDIAL RD TROUTDALE, OR 97060 PHONE 503-669-1156 FAX 503-666-8189



WINDOW SILL--OPTION -A-

SCALE: 6" = 1'-0"

SECTION VIEW

SHEET

SSMSS PANEL SYSTEM

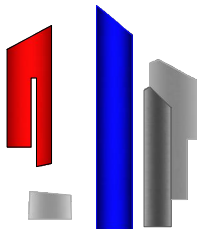
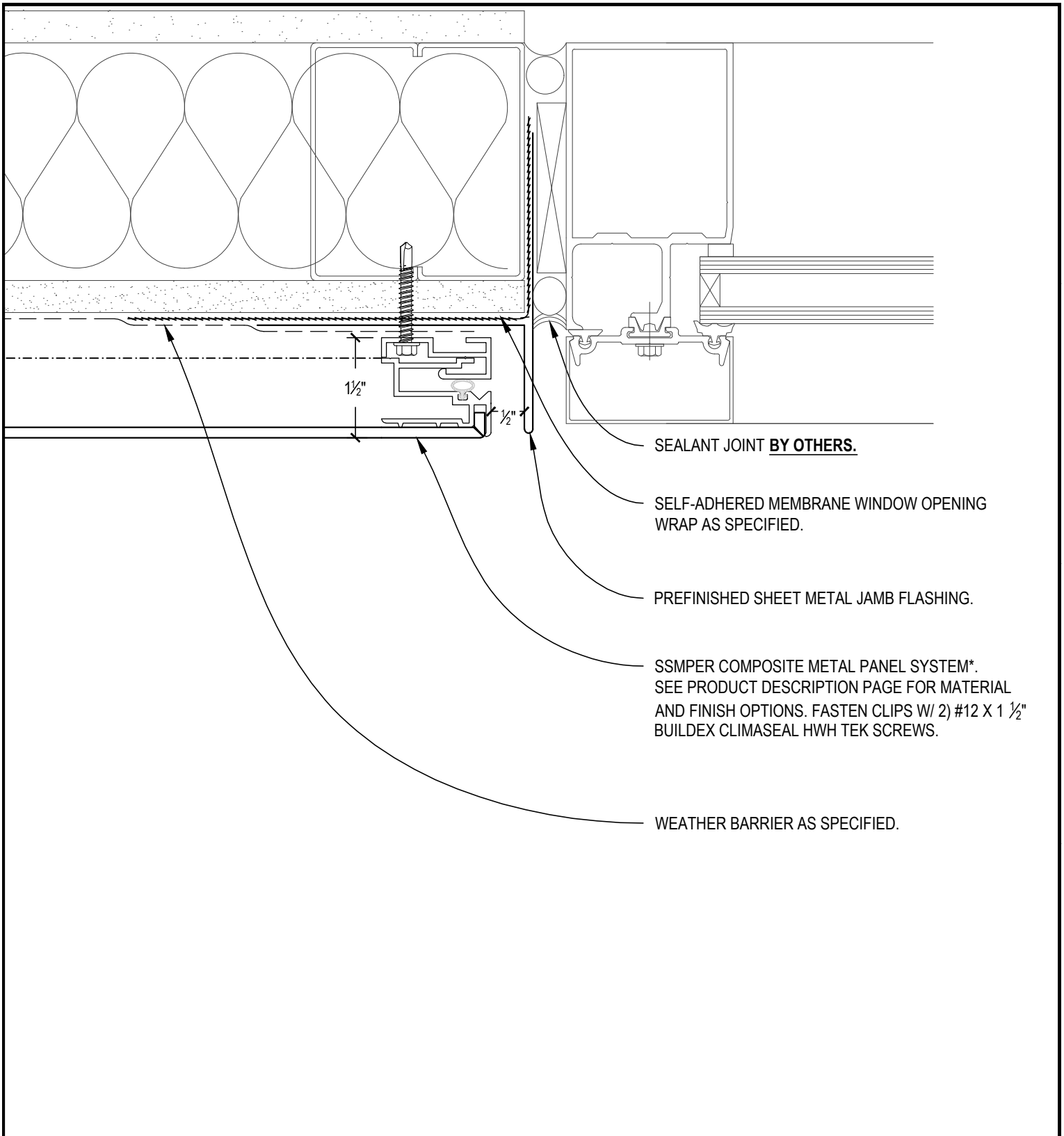


SKYLINE
SHEET METAL

DATE: 01-01-10

DRAWN: JASON YORK

1535 NW SUNDIAL RD TROUTDALE, OR 97060 PHONE 503-669-1156 FAX 503-666-8189



TYPICAL WINDOW JAMB

SCALE: 6" = 1'-0"

PLAN VIEW

SSMSS PANEL SYSTEM

SHEET

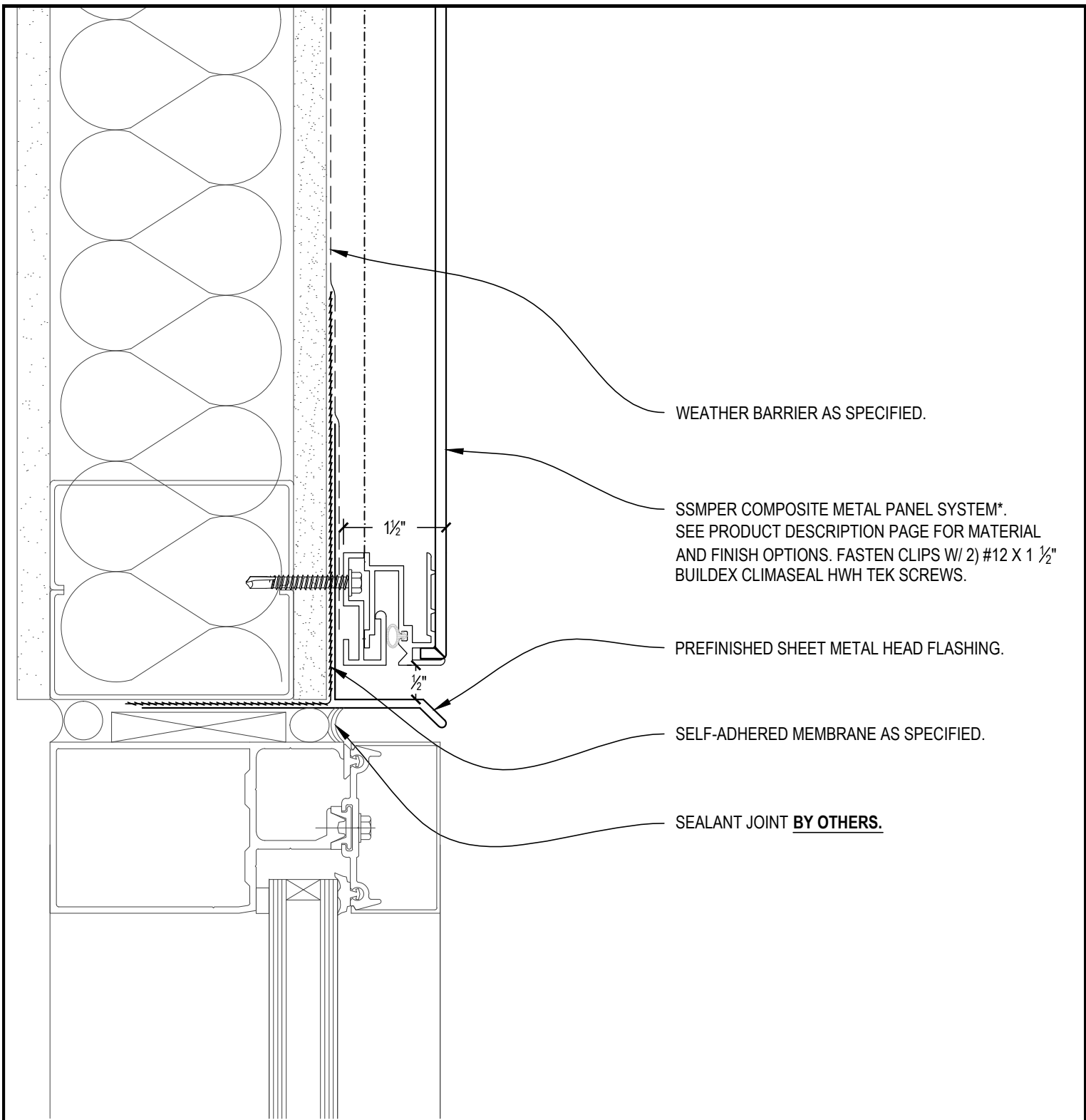


SKYLINE
SHEET METAL

DATE: 01-01-10

DRAWN: JASON YORK

1535 NW SUNDIAL RD TROUTDALE, OR 97060 PHONE 503-669-1156 FAX 503-666-8189



WEATHER BARRIER AS SPECIFIED.

SSMPER COMPOSITE METAL PANEL SYSTEM*.
SEE PRODUCT DESCRIPTION PAGE FOR MATERIAL
AND FINISH OPTIONS. FASTEN CLIPS W/ 2) #12 X 1 1/2"
BUILDEX CLIMASEAL HWH TEK SCREWS.

PREFINISHED SHEET METAL HEAD FLASHING.

SELF-ADHERED MEMBRANE AS SPECIFIED.

SEALANT JOINT BY OTHERS.

SKY
LINE

TYPICAL WINDOW HEAD

SCALE: 6" = 1'-0"

SECTION VIEW

SHEET

SSMSS PANEL SYSTEM

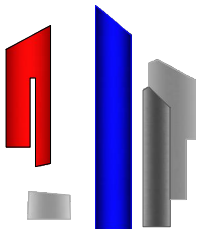
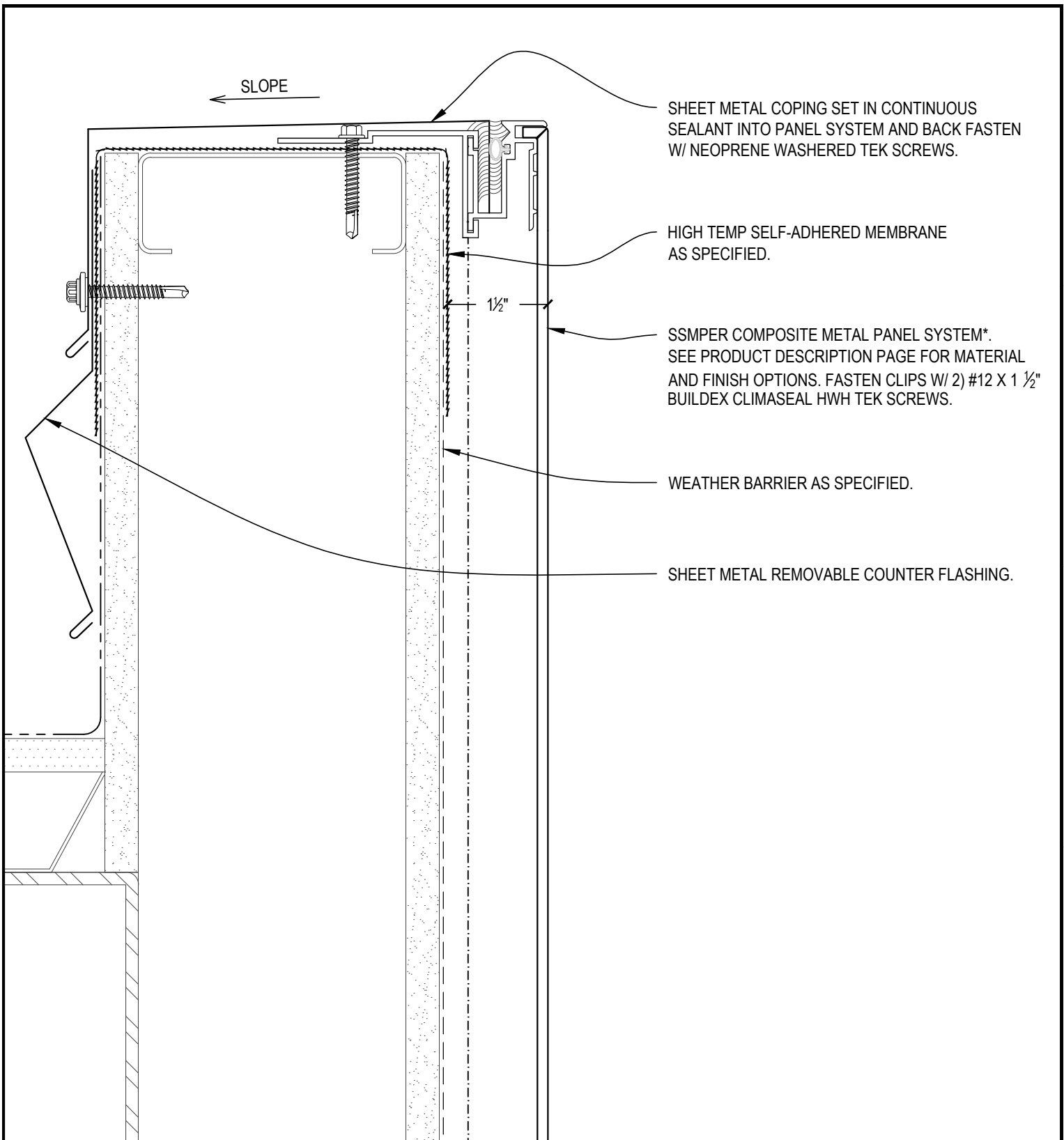
SKYLINE
SHEET METAL

DATE: 01-01-10

DRAWN: JASON YORK

8

1535 NW SUNDIAL RD TROUTDALE, OR 97060 PHONE 503-669-1156 FAX 503-666-8189



TYPICAL PARAPET CAP

SCALE: 6" = 1'-0"

SECTION VIEW

SHEET

SSMSS PANEL SYSTEM

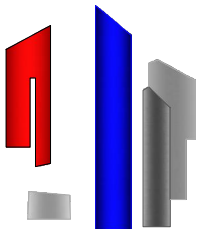
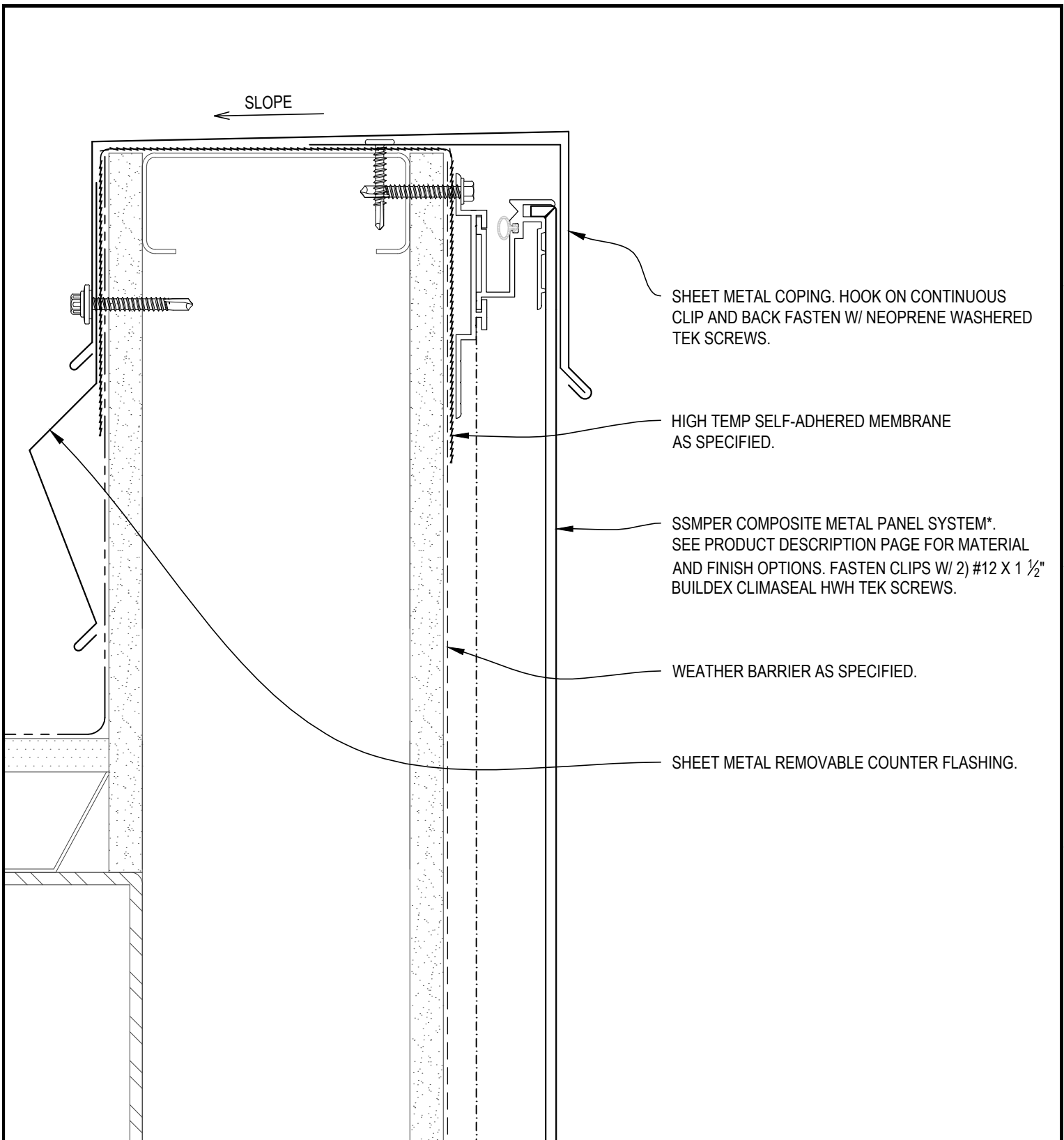
9

SKYLINE
SHEET METAL

DATE: 01-01-10

DRAWN: JASON YORK

1535 NW SUNDIAL RD TROUTDALE, OR 97060 PHONE 503-669-1156 FAX 503-666-8189



PARAPET CAP--OPTION -A-

SCALE: 6" = 1'-0"

SECTION VIEW

SHEET

SSMSS PANEL SYSTEM

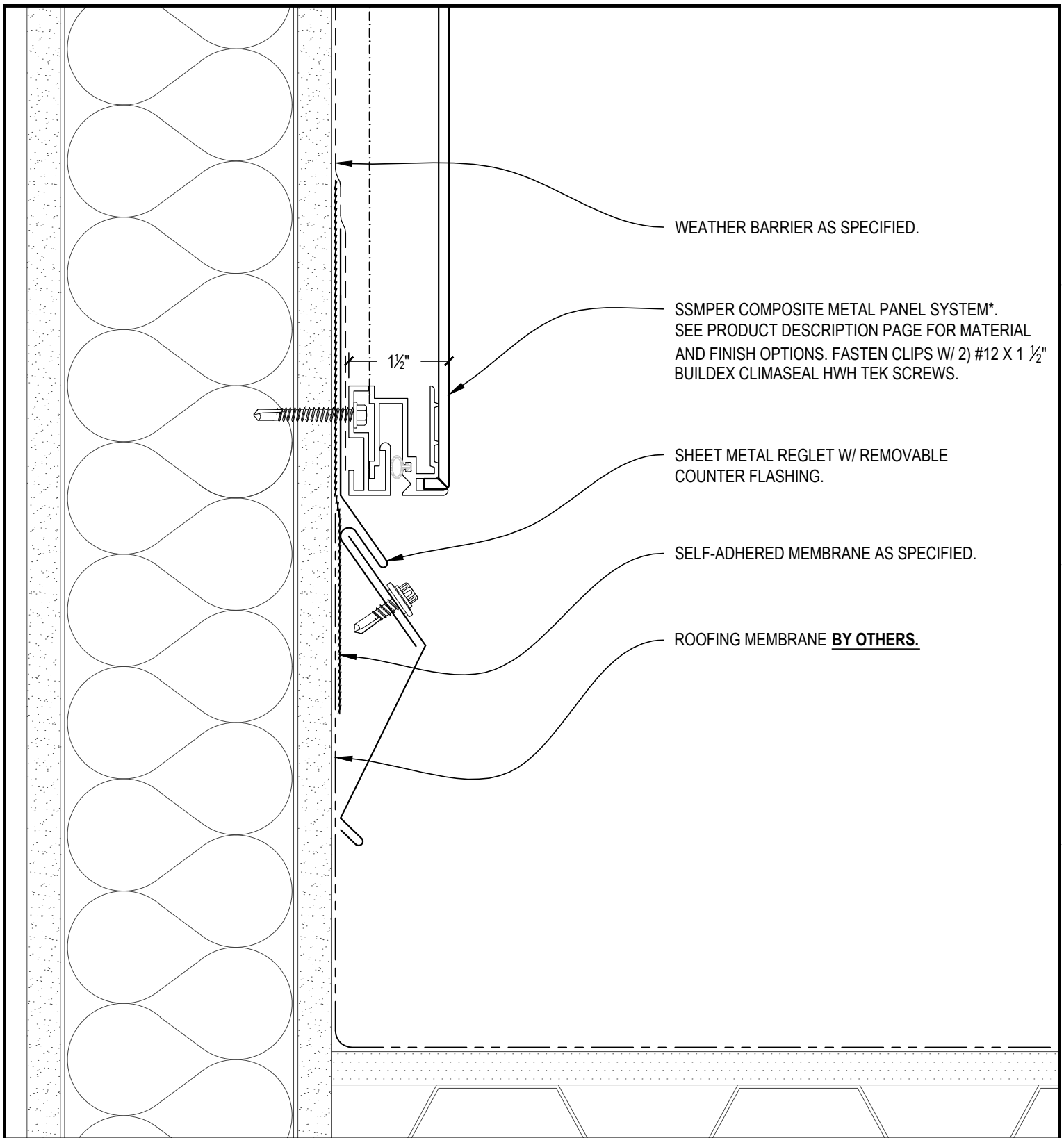


SKYLINE
SHEET METAL

DATE: 01-01-10

DRAWN: JASON YORK

1535 NW SUNDIAL RD TROUTDALE, OR 97060 PHONE 503-669-1156 FAX 503-666-8189



TYPICAL PANEL @ ROOF

SCALE: 6" = 1'-0"

SECTION VIEW

SSMSS PANEL SYSTEM

SHEET

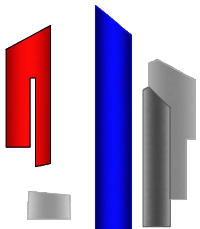
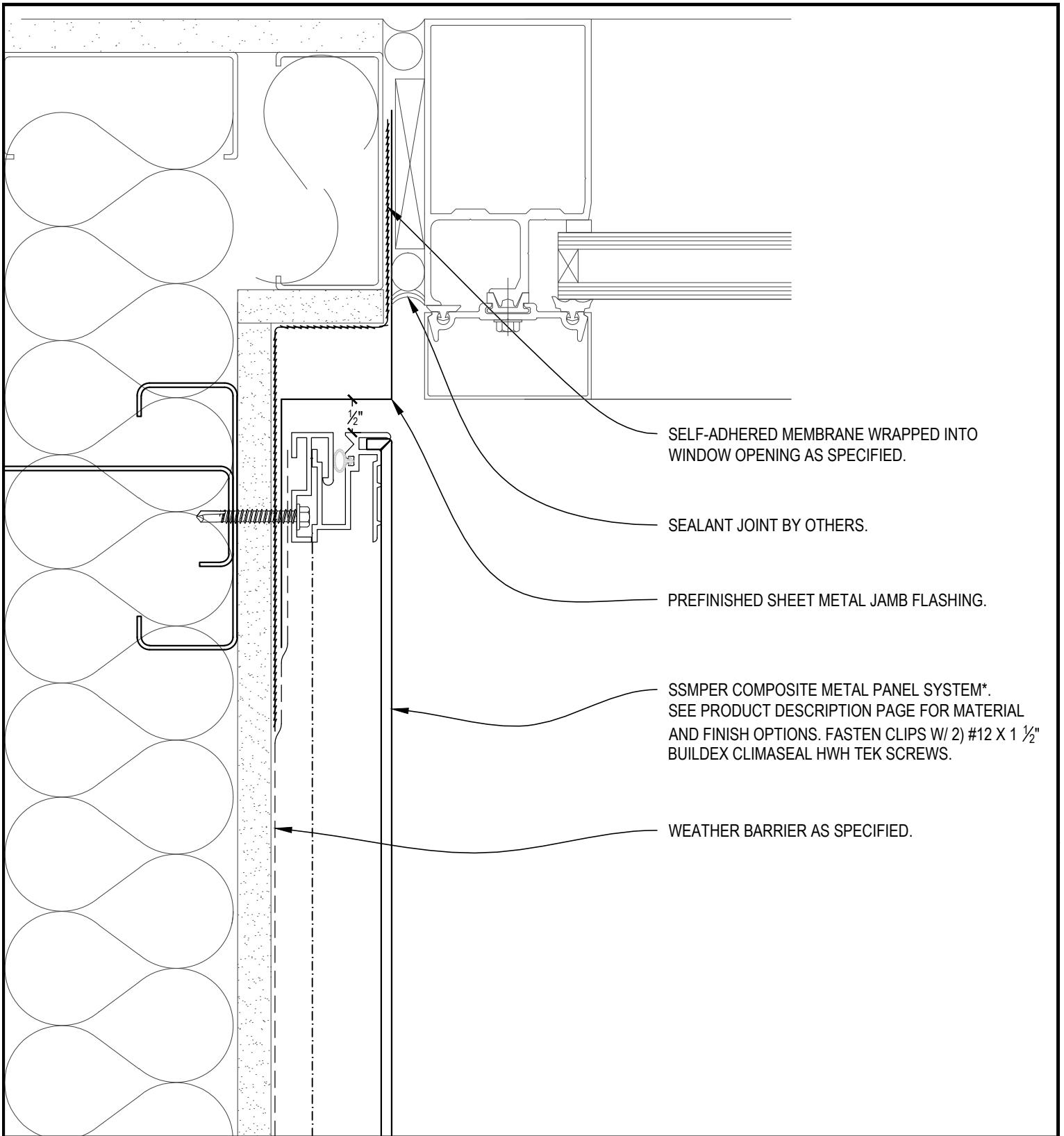


SKYLINE
SHEET METAL

DATE: 01-01-10

DRAWN: JASON YORK

1535 NW SUNDIAL RD TROUTDALE, OR 97060 PHONE 503-669-1156 FAX 503-666-8189



INSIDE CORNER WINDOW JAMB

SCALE: 6" = 1'-0"

SECTION VIEW

SSMSS PANEL SYSTEM

SHEET

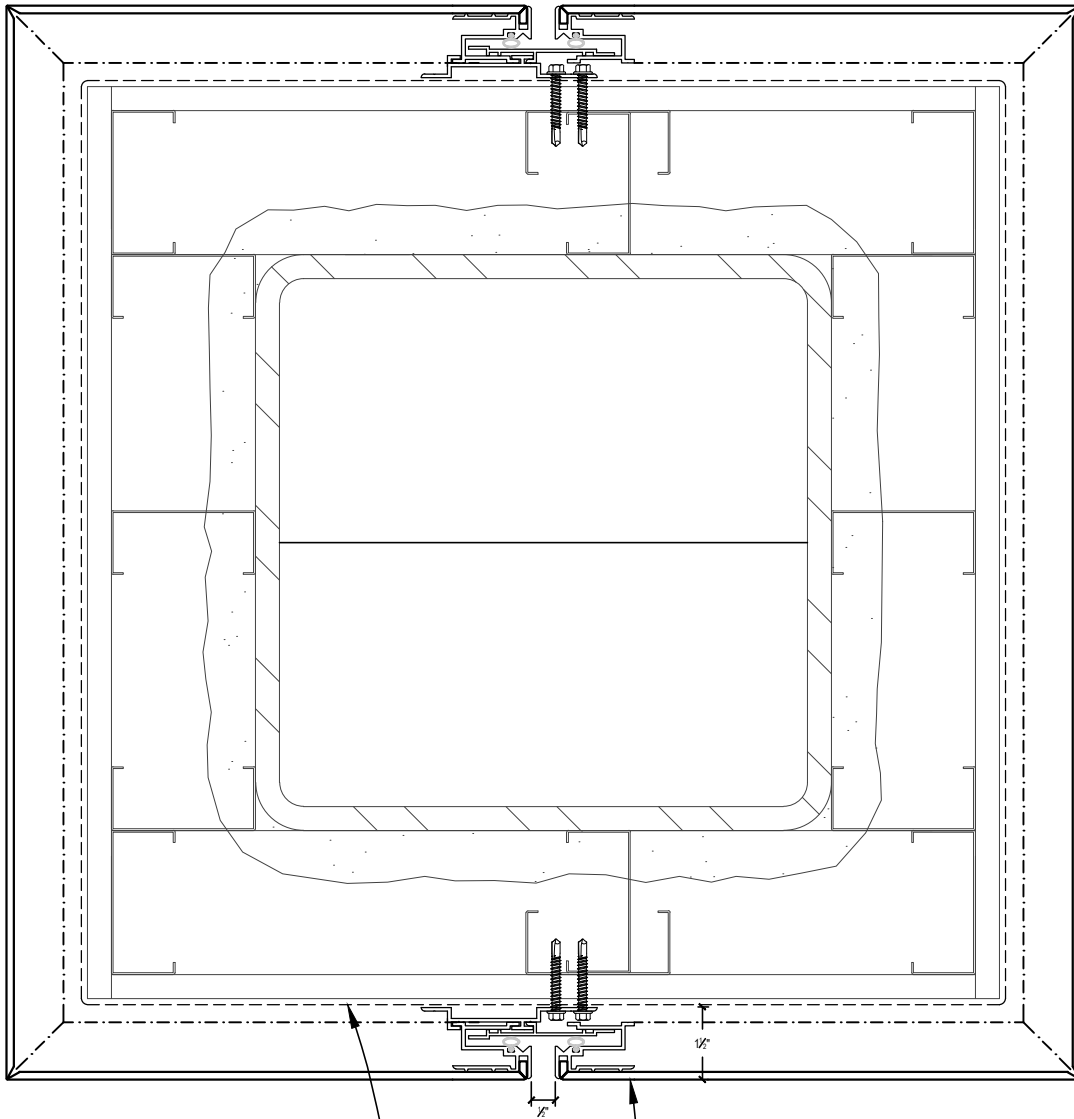
11

SKYLINE
SHEET METAL

DATE: 01-01-10

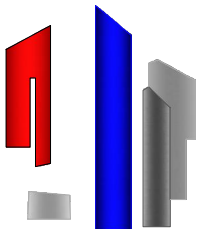
DRAWN: JASON YORK

1535 NW SUNDIAL RD TROUTDALE, OR 97060 PHONE 503-669-1156 FAX 503-666-8189



SSMPER COMPOSITE METAL PANEL SYSTEM*.
 SEE PRODUCT DESCRIPTION PAGE FOR MATERIAL
 AND FINISH OPTIONS. FASTEN CLIPS W/ 2) #12 X 1 1/2"
 BUILDDEX CLIMASEAL HWH TEK SCREWS.

WEATHER BARRIER AS SPECIFIED.



TYPICAL COLUMN WRAP

SCALE: 6" = 1'-0"

SECTION VIEW

SSMSS PANEL SYSTEM

SHEET

12