



Volume 27 Issue 1

January 2011

Staff:

Dr. James Larsen, Pastor  
Brad Fish, Office Manager

Elders:

Gene Stringer  
Doyle Cornwell  
Michael Wing

Inside this issue:

- 39 Plus
- New Class for New to the Bible Folk
- My Final Thanks
- Old Time Movie Night
- Podcasts
- Rogue Riders
- Real Men
- Potluck
- Church at Louie's
- Piece Corp Quilt—Winner
- Operation Christmas Child
- Proposed Budget
- Board Reflections
- Ladies Lunch Bunch
- Personal Evangelism Training
- Alpha
- January Birthdays
- January Anniversaries
- Calendar

# THERE IS NO STOPPIN' IT

This church was established in Ashland in the 1800s. When the building was first constructed it sat just opposite the direction it faces today. Quite a few aspects of the congregation have taken new directions in, lo, these 100+ years. The last decade alone has seen developments we'd never have dreamed of. Techie stuff alone has put a new face on worship time, the transmission of our sermons and other audio and visual to the entire globe...the latest being our podcasts and the Out-SideTheWalls website.

My own sort of ministry is nothing like I've ever practiced before. In these Post Christian days we are not the home team anymore. Especially in Ashland, we are sort of the outsiders. A whole strata of our culture seems to say to the church: You guys had your day, so sit down and shut up. The 'how' of our approach has changed immensely. Newcomers to town don't automatically start looking for a church home. Professionals don't run to get on a church roster for business purposes. Face it. We are a minority.

But this doesn't have us whimpering or whining. We just shift gears, test the waters and make adjustments. The Gospel isn't compromised. But church music has been affected. Preaching styles require some serious tweaking. Yet in the middle of all of the twists and turns, there are some

fundamental truths to hold to. God designed the church to be a place of belonging and being accepted. Our church needs to always remember the 'us' piece. Still, we are Christ's ambassadors (along with other believing Christians) to a hurting and confused populace.

Somehow we try to make our place an 'us' place and a 'them' place. Make sense? The 'us' refers to membership. The 'them' is all about our mission... our mandate. I am overjoyed to serve a congregation which gives much thought to 'us' but always give our efforts to win 'them' a good cheer... and active support. May God grant us the wisdom to keep this balance in the new year, with a nod given to outreach over membership.

Your Elders and I are planning evangelism training events for our church. They'll happen about once a quarter, starting with the Lemkes in February. Please join me in making these sessions a real priority as we put feet on our dreams to reach 'them'.

In hopes of Us reaching Them,



## 39PLUS...BUT ALL AGES WELCOME

It is a fixture in the church calendar...the First Wednesday gathering at Marie Hoffman's place. This month (5<sup>th</sup>) we'll again meet at her place, 61 N. Mountain, at 10 a.m. Expect a heated game of Kings Corners or SkipBo before Jim's Bible study at 11. He'll wrap up his lesson in time for us to launch lunch at noon. Bring a dish to share if you'd like. Everyone is welcome. Here's a good opportunity to meet the movers and shakers of the church. January 5...10 a.m.

## REGRETS TURNED POSITIVE...

### A NEW CLASS FOR NEW-TO-THE-BIBLE FOLK

Ed Macauley and I reflected on our early days of church life. Why did it take so long for us to catch hold of the over-all flow of the Bible? Whose job was it to make sure we got a grip on the core values and teachings of Jesus? These and many other ideas moved us to plan a class which would be beefy, interactive, connected to real life and (of course) Biblical.

Our new class will be conducted in the balcony (above the church library) each Sunday morning at 9:30 sharp, starting January 9. Who may attend? Those new-to-the-Bible and any who are young-in-the-faith. Stop in the Fellowship Hall on the way for coffee/hot chocolate and a light breakfast fare (ready by 9:15). Bring your Bible and a notebook.

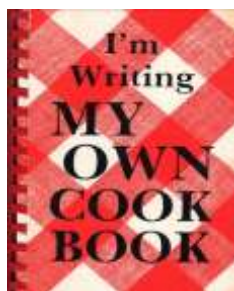
Expect: Bible memorization, outside reading, tools for living and group activities...and more. Questions: Call Jim at 541-890-3209

Note: We will offer an evening version of this class if there is sufficient interest.  
Jim Larsen

## MY FINAL THANKS...

### BUT ONGOING APPRECIATION

Dear Friends, I was overwhelmed by the treasure trove of superb recipes. You started back in October (Pastor Appreciation Month) and



kept right on blessing me with family jewels (exceptional recipes). I will have little use for "Frying Older Squirrel" or "Muskrat Fricassee", but otherwise I expect to have my nose in these recipes quite often in the new year. Much love, Jim

## A MIGHTY FINE OPPORTUNITY...

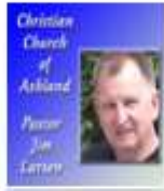
### OLD TIME MOVIE NIGHT

Every month the crowd files out past me at the conclusion of another successful double feature in our sanctuary/theatre. Every single month the accolades flow freely. We are profusely thanked for offering these classic films for the community's viewing pleasure. The largest room in the church building is in use more than a few hours on Sunday. It is a precious tool...a stewardship. At the December intermission one family asked me how they could make a donation to defray expenses of my upcoming mission trip to Peru. Wow. How precious is that?

We aren't a church that throws stones at Hollywood. Instead, (thanks to Mike Royer) we offer these grand old films each Third Saturday evening. Entire families line up at the snack bar for polish dogs, pop corn and cheap beverages. Intermission is a kick. What fun for all!

And what better way to introduce a neighbor, family member or friend to wholesome entertainment...and your mighty fine church bunch? A church building need not be a scary place and walking in need not be a frightening experience. Thanks to the whole crew who make Ashland's Old Time Movie Night a spectacular event. Check out the back page of the newsletter for this month's offerings. Jim Larsen

**Podcasts** [See All >](#)



Christian Church of Ashland  
Pastor Jim Larsen

**Christian Church of Ashland Sermons**

Christian Church of Ashland  
Religion & Spirituality



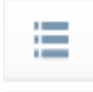


SUBSCRIBE F... ▾

Did you get a new iPod for Christmas? Are you looking for something to listen to? Did you miss

Jim's last message, or want to hear it again?

You can now go to iTunes and type in "Christian Church of Ashland" in the iTunes Store and find Jim's messages available as a free download. You can also subscribe and have new sermons downloaded automatically each week. There are currently four recent episodes.

Don't have an iPod or use iTunes. Just go to [www.cc-ashland.org](http://www.cc-ashland.org) and click on "Sermons" from the main menu. Click on a message and you can:

-  Listen to the message
-  Download the message
-  Log-in if you would like to leave a comment
-  View the PowerPoint slides  
(PowerPoint is not required)
-  View or add the RSS feed

We are currently making use of a service called "Sermon Cloud" which will make our first 52 podcasts available at no cost to the church or listener. I will be training some helpers to get older messages added and have a goal to have each Sunday's message available by sometime each Tuesday.

I would love to get feedback and suggestions on this new ministry. Just send any comments to [office@cc-ashland.org](mailto:office@cc-ashland.org).

Brad Fish

## ROGUE RIDERS...EASY AS A-B-C

In 2011 you'll be invited to an A event, a few B events and eight Cs.

- > A Events... Those expeditions of several days to a week.
- > B Events... Full Day excursions
- > C Events... Forays of a few hours to a half-day

In the springtime our Rogue Riders will trek over to the coast and stay for a few days ("A" trip). In late summer we'll caravan up to Crater Lake, with a



stop for lunch at Becky's Café at Union Creek ("B" event). In early summer we'll be grilling burgers and picnicking at Emigrant Lake (a "C" jaunt). Each month will feature an opportunity to do a bit of traveling, dining and enjoying fine fellowship.

Here's the event for *Wednesday, January 19*: A fun trip to **Ma's Restaurant** in Shady Cove, with a stop in the park for an outdoor treat of coffee/hot chocolate and dessert. Meet at the church at 10:30 to caravan...or meet us at Ma's at about 11:15.

## THOSE GUYS AT THE



## LONG TABLE...REAL MEN

What keeps these guys coming back Monday after Monday? Large portions of manly breakfast? Or maybe it's the simple joy of connecting with each other (some don't attend our Ashland church)? Could be they show up to follow Gene Stringer as he walks us through the Lookout Lesson. Whatever

(Continued on page 4)

(Continued from page 3)

er it is...these real men with real lives (some with real wives) have been attending for years. You'd like them. No pretense...no halos. Monday morning...Old Farm House Restaurant...7:45...Phoenix (Oregon!!)

## POTLUCK –JANUARY 16

BRRRRRRR!...It's time for soup and sandwiches. Rather than the traditional "main dish" bring either soup or sandwiches for sharing. Our monthly potluck is always great time to enjoy friends and good food.

If your last name begins with **A-K, please bring soup or sandwich and a dessert**. If your last name begins with **L-Z, please bring soup or sandwich and a salad**. Single folks just bring one item to share.

*Remember the ovens are on for keeping food warm, so please bring your food already cooked.*

## CHURCH AT LOUIE'S BAR...

### A CONTRADICTION?

Somebody might have thought that of Fishermen-Disciples of Jesus...a contradiction. Throw in 'Tax Collector' and it gets even more puzzling. So it is with Church...at a bar. Yet every single week David Bruce, Brad and I find ways to connect with people. We've prayed with bartenders and waitresses. Employees and patrons have requested that we speak to the 'Man upstairs' about their serious issues. I've shared the Gospel with folk we've met while filming our weekly version of Church at Louie's. Short vignettes are shared on the internet (various sites, including OutSideTheWalls.Com), plus a thirty minute program on Saturday nights on local television.

This, as well as Old Time Movie Night, the new podcast ministry and my weekly column in the Thursday **Daily Tidings** are attempts to fulfill the Great Commission...Go into all the World. Jim Larsen

## WINNER OF THE PIECE CORPS

### QUILT

Congratulations to Candi, Helen Jane Slack's daughter, for winning the gorgeous quilt which was made by our Piece Corps. The announcement was made at

the Lady's Christmas Tea.

## OPERATION CHRISTMAS CHILD

Thanks again to all who put together shoeboxes for this year's Operation Christmas Child. We collected 33 boxes. We have received word that many of our boxes have been delivered to children in the Philippines.

It is especially fitting that our shoeboxes went to the



Philippines since we have been supporting ministry to the street children and orphans of the Philippine Islands for many years. Currently our mission fund provides \$530 per month to the ministry of Christians' Haven which includes a scholarship for Romeo Antonio. You can read his current letters on the Mission Board in the Library and find his Christmas card to our congregation with other cards in the foyer. ([www.christianshaven.com](http://www.christianshaven.com))

### The following are two excerpts from a Samaritan's Purse update on our shoeboxes.

*Thirty-five percent of the Philippines' 99.9 million people are 14-years-old or younger. In 2009, 355,657 shoe box gifts were delivered to children in the Philippines, which first received the gifts in 1998. Since then, 1,490,680 children have received a shoe box gift.*

*In 2010, Operation Christmas Child is offering a new, follow-up discipleship program to our ministry partners in conjunction with the shoe box gifts. This year in the Philippines, these Bible lessons will be offered to 168,000 children who receive a shoe box gift.*

*The Greatest Journey begins when children are freely offered Gospel storybooks along with their shoe boxes. The Greatest Gift of All booklets—printed in over 70 languages—contain colorful illustrations that explain the Good News of Jesus Christ in a simple, engaging style.*

*After receiving a shoe box gift, boys and girls are invited to participate in the voluntary Bible study course produced by Samaritan's Purse. The 12-lesson set guides children through a study of who Jesus Christ is, what it means to follow Him, and how to share this exciting message with others.*

*To help these boys and girls continue to grow in their faith, we also want to provide them with their own copies of the Greatest Gift of All New Testament. This special edition also includes select Old Testament stories, a dictionary, and a section that encourages the children to memorize Scripture.*

## Spiritual Impact Stories

### Bearing Fruit (from Samaritan's Purse)

A local volunteer reported: "We had an opportunity to interview a church in Payatas where the youth leaders, Sunday School teachers, and praise and worship team members are children who received the shoe boxes nine years ago. Imagine, they stayed in the faith after nine years and now they are ready to hand out shoe boxes to the next generation. What a great joy to witness them handing out the shoe boxes this year! It was only two volunteers who were doing the work at that time (nine years ago) and now they are seeing the fruits. What an encouragement to continue doing the same work over and over again...because we know it bears fruit."

## PROPOSED BUDGET

Thanks to the Budget Committee you'll soon see a copy of the proposed 2011 budget, with a vote on the budget coming on January 16. The board chairman will conduct a brief meeting on that day, with ballots given to members of this church who are at least 15 years of age.

## BOARD REFLECTIONS

### BY JIM LARSEN

#### December 12 Church Board Meeting

Eleanor Olson brought a fine devotion...inspiring. Doyle reported that we are considering alternative sites for presenting the ALPHA course, including the Food Court in the Rogue Valley Mall. Board members like the idea.

Our deacons have been having productive work days...another is planned at the church on Saturday, January 8.

Deaconess report: Kay said that it would be good to take a survey of the congregation to discover what

events, such as the Ladies Christmas Tea, are really something our folk want. Perhaps some events which were popular in the past have run their course.

The Piece Corp quilt was won by Helen Jane Slack's daughter, Candi. Congratulations!

Emily Rogers discussed a book she really likes...Do Hard Things. Twin brothers write that youth are seldom asked to serve in ways that stretch them.

Library report by Eleanor. Gene Stringer has completed a fine set of book shelves for the library. The Library ladies also plan to present the kids of the church (3 yrs to 5<sup>th</sup> grade) with books for Christmas. Good going.

Mel Metcalf reported that all is going well for getting work started on the new bathroom. Fees need to be paid for the building permit (note: fees have now been paid and the permit is in hand).

The Budget Committee reported that the budget proposed for 2011 is completed and will be voted on by the congregation in early January.

The treasurer reported that over \$1000 has been received from the Silent Auction...with a little more still to be collected.

A fine, fairly short meeting with high spirits. Cookies and coffee were enjoyed by all...plus some veggies. Good job, team.

### LUNCH BUNCH REMINDER

#### ALL LADIES

You are invited to the catered Snow People Bunch... Lunch  
JANUARY 14<sup>th</sup>

BUFFET OPENS AT NOON  
IN THE CHURCH FELLOWSHIP HALL

(basement☺).

Come during your lunch break if you have enough time off from your work.

Come and stay to help with the clean-up if your day is unstructured and your energy is flowing.

Come and enjoy a little pampering and conversation no matter what.

Eleanor Olson will share about a favorite book. If the Lord jiggles your synapses, bring a favorite book (old or new) to share also.

So even if-

"THE WEATHER OUTSIDE IS FRIGHTFUL"  
we plan to have a gathering  
"SO DELIGHTFUL".

See you soon - Eleanor O. and Janice S.

## Personal Evangelism Training

How can I effectively introduce my friends and family to Jesus? There is more than one answer to this question. But it is an important question that deserves a thoughtful response. As those who know the benefits of being children of God it is only natural that we would want to help others to find The Way. In February we begin a planned series of weekend workshops designed to help you find an approach that will work for you and your friend or family member.



Corey and Janice Lemke have served 15 years in Ukraine and in the process have learned a lot about training others in personal evangelism and church planting. You will enjoy interacting with this dynamic couple over the weekend of Feb. 18-21, 2011. Put these dates on your calendars and look for the details soon to be disclosed.

Expect to see more opportunities as we bring other leaders to Christian Church of Ashland every 3-4 months in 2011.

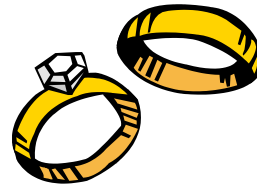
### ALPHA

We are trying a new format for the **ALPHA** course in the near future. The plan is to meet in a public eating place such as the food court at the mall in Medford. We will buy our own food and sit together where we can view the Nicky Gumble DVD on a laptop computer and eat our food at the same time. When the video is over the discussion begins immediately. In this compact format the meeting time should be 2 hours or less. We expect that this format will work for 6-8 people. Those interested in attending or perhaps running a course should contact Gene Stringer.



### JANUARY BIRTHDAYS

- 1 - Helen Calhoun
- 1 - Bonnie Maulsby
- 2 - Jim Witt
- 2 - Robin Witt
- 2 - Kacey McDonald
- 3 - Terry Hayes
- 5 - Joyce Lavelle
- 8 - Katie Anderson
- 9 - David Lockwood
- 9 - Hal Bosworth
- 13 - Betty Tine Metcalf
- 15 - Ed Macauley
- 18 - Audrey Morrison
- 18 - Joshua McDaniel
- 24 - Linda Bell



### JANUARY ANNIVERSARIES

- 2 - Greg and Rebecca Luce
- 23 - Karl and Helen Jane Slack

*Editor's Note: If I have missed your birthday or anniversary please let me know so I can update my calendar and include them in the future. If I have included any that you would like removed please let me know that also. Just send corrections to the church office. Brad*

# "JESUS, LORD OF ALL"

"The Family of God"

Sunday	Monday	Tuesday	Wednesday	Thursday	Friday	Saturday
2 Jim Witt, B'day Robin Witt, B'day Oreg and Rebecca Luce, Ann Kacey McDonald, B'day	3 7:45 AM Real Men-Old Farm House Cafe 8:00 AM Ladies Monday Morning Study Group Terry Hayes, B'Day	4 9:30 AM Piece Corps	5 10:00 AM 39 Plus - Marie Hoffman's Home Joyce Lavelle, B'day	6	7	1 9:00 AM Saints Alive Breakfast - Iron Skillet Helen Culhoun, B'day Home Monthly B'Day New Year's Day
9 12:30 PM Board Meeting David Lockwood B'day Hal Bosworth, B'day	10 7:45 AM Real Men-Old Farm House Cafe 8:00 AM Ladies Monday Morning Study Group	11 9:30 AM Piece Corps 12:00 PM Ladies Lunch Bunch	12	13 BettyTime Metcalf B'day	14	8 9:00 AM Deacons Work Day 9:00 AM Deacons Work Day Katie Anderson, B'day
16 12:15 PM Potluck	17 7:45 AM Real Men-Old Farm House Cafe 8:00 AM Ladies Monday Morning Study Group Martin Luther King, Jr.	18 9:30 AM Piece Corps Audrey Morrison, B'day Justin McDonald, B'Day	19 10:30 AM Rogue Riders - Ma's Restaurant - Study Cove	20	21	15 6:30 PM Old Time Movie Night Ed Macmorney, B'day
23 Karl & Helen Jane Suck, Ann	24 7:45 AM Real Men-Old Farm House Cafe 8:00 AM Ladies Monday Morning Study Group Lynda Hall, B'day	25 9:30 AM Piece Corps	26 10:00 AM 39 Plus - Newsletter Folding	27	28	22
30	31 7:45 AM Real Men-Old Farm House Cafe 8:00 AM Ladies Monday Morning Study Group					29

February 11

S	M	T	W	T	F	S
6	7	8	9	10	11	12
13	14	15	16	17	18	19
20	21	22	23	24	25	26
27	28	29	30	31		

December 11

S	M	T	W	T	F	S
6	7	8	9	10	11	12
13	14	15	16	17	18	19
20	21	22	23	24	25	26
27	28	29	30	31		

# JANUARY 2011

CHRISTIAN CHURCH OF ASHLAND

318 B Street  
PO Box 959  
Ashland, OR 97520  
Jim Larsen, Minister

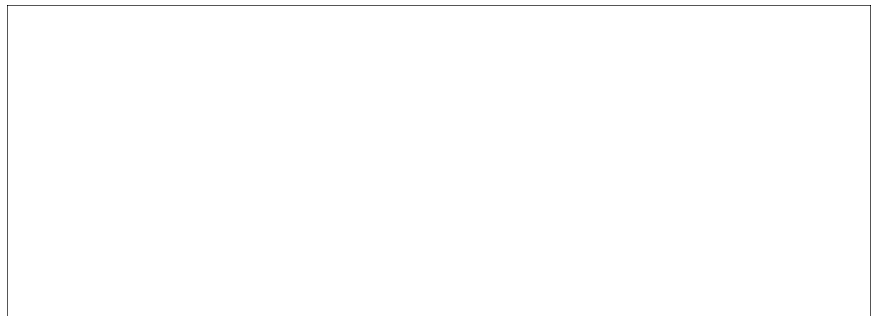
Phone: 541-482-1561  
Fax: 541-482-1638  
Email: office@cc-ashland.org  
Web: www.cc-ashland.org

Non-Profit  
Organization  
US POSTAGE  
PAID  
Permit No. 84  
Ashland, Oregon

RETURN SERVICE REQUESTED

### Sunday Service Schedule

9:30 AM Sunday School  
10:30 AM Discovery Club  
10:45 AM Worship



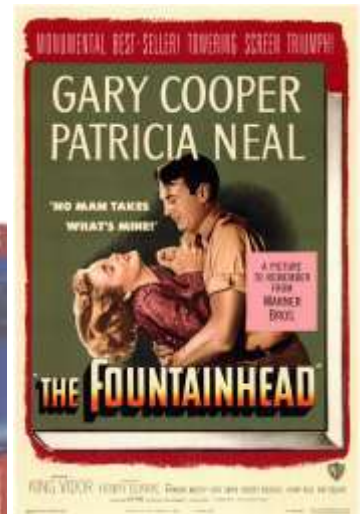
*Faithful to God, Responsive to People*

*We're on the Web*  
[www.cc-ashland.org](http://www.cc-ashland.org)



and neighbors, shout it from the rooftops, alert strangers on the street! It's Old Time Movie Night Sat. Jan. 15, 2011...and it's FREE! Donations are accepted.

**Doors open at 6:00pm,  
movies and FUN start at  
6:30pm**



OLD TIME MOVIE NIGHT--  
8 1/2 YEARS AND COUNTING!  
The delightful and unique Margaret Rutherford helps Old Time Movie Night welcome the New Year with a humorous mystery as Agatha Christie's "450 From Paddington" is adapted for the motion picture screen in MGM's 1962 "MURDER SHE SAID...". Join us as amateur sleuth Miss Jane Marple sets out to solve a murder that only she witnessed and, of course no one believes her! Attention architectural fans!

Our second feature on Saturday January 15 is the 1948 lavish Warner Bros. romantic/philosophical drama, "THE FOUNTAINHEAD" written for the screen by Ayn Rand from her own best selling novel. The stars are Gary Cooper, Patricia Neal and Raymond Massey. This emotionally and intellectually searing film about architect Howard Roark, who stands alone against the whole world, will follow intermission and the vintage "coming attractions." Of course, expect the usual surprises. Don't miss this evening of cinematic delights. Tell your friends

*While you're at it, consider bringing something for the Ashland Emergency Food Bank.*

