



## Zebrafish Behavioral Profiling Links Drugs to Biological Targets and Rest/Wake Regulation

Jason Rihel *et al.*

*Science* **327**, 348 (2010);

DOI: 10.1126/science.1183090

*This copy is for your personal, non-commercial use only.*

If you wish to distribute this article to others, you can order high-quality copies for your colleagues, clients, or customers by [clicking here](#).

Permission to republish or repurpose articles or portions of articles can be obtained by following the guidelines [here](#).

**The following resources related to this article are available online at [www.sciencemag.org](http://www.sciencemag.org) (this information is current as of July 10, 2012):**

**Updated information and services**, including high-resolution figures, can be found in the online version of this article at:

<http://www.sciencemag.org/content/327/5963/348.full.html>

**Supporting Online Material** can be found at:

<http://www.sciencemag.org/content/suppl/2010/01/14/327.5963.348.DC1.html>

A list of selected additional articles on the Science Web sites **related to this article** can be found at:

<http://www.sciencemag.org/content/327/5963/348.full.html#related>

This article **cites 19 articles**, 2 of which can be accessed free:

<http://www.sciencemag.org/content/327/5963/348.full.html#ref-list-1>

This article has been **cited by** 6 article(s) on the ISI Web of Science

This article has been **cited by** 10 articles hosted by HighWire Press; see:

<http://www.sciencemag.org/content/327/5963/348.full.html#related-urls>

This article appears in the following **subject collections**:

Psychology

<http://www.sciencemag.org/cgi/collection/psychology>

Ciências e Letras de Ribeirão Preto, Departamento de Biologia, Universidade de São Paulo, Ribeirão Preto, São Paulo 14040-901, Brazil. <sup>26</sup>Department of Biological Sciences, Vanderbilt University, Nashville, TN 37235, USA. <sup>27</sup>Josephine Bay Paul Center for Comparative Molecular Biology and Evolution, Marine Biological Laboratory, Woods Hole, MA 02536, USA. <sup>28</sup>European Molecular Biology Laboratory, 69117 Heidelberg, Germany. <sup>29</sup>Institute for Evolution and Biodiversity, University of Münster, 48143 Münster, Germany. <sup>30</sup>Laboratory of Zoophysiology, Ghent University, B-9000 Ghent, Belgium. <sup>31</sup>The Queensland Brain Institute, The University of Queensland, Brisbane, Queensland 4072, Australia. <sup>32</sup>Department of Microbiology and the Center for Computational Biology, Montana State University, Bozeman, MT 59715, USA. <sup>33</sup>Instituto de Física de São Carlos, Departamento de Física e Informática, Universidade de São Paulo, São Carlos, São Paulo 13560-970, Brazil. <sup>34</sup>Subtropical Insects Research Unit, United States Department of Agriculture—Agricultural Research Service (USDA-ARS), U.S. Horticultural Research Lab, Fort Pierce, FL 34945, USA. <sup>35</sup>School of Biological Sciences, University of Liverpool, Liverpool L69 7ZB, UK. <sup>36</sup>School of Biology, Georgia Institute of Technology, Atlanta, GA 30332, USA. <sup>37</sup>Department of Biology and Biochemistry, University of Houston, Houston, TX 77204, USA. <sup>38</sup>Bee Research Lab, USDA-ARS, Beltsville, MD, 20705, USA. <sup>39</sup>Australian Research Council Centre of Excellence for Coral Reef Studies, James Cook University, Townsville, Queensland 4811, Australia. <sup>40</sup>Department of Biology, Indiana University, Bloomington, IN 47405, USA. <sup>41</sup>Institute of Physiology, Rheinisch-Westfälische Technische Hochschule (RWTH) Aachen University, D-52074 Aachen, Germany. <sup>42</sup>Department of Molecular Biology, Umeå University, S-901 87 Umeå, Sweden. <sup>43</sup>Department of Entomology, University of Nebraska, Lincoln, NE 68583, USA. <sup>44</sup>Graduate School of Bioagricultural Sciences, Nagoya University, Nagoya 464-8601, Japan. <sup>45</sup>School of In-

formatics, Indiana University, Bloomington, IN 47405, USA. <sup>46</sup>Department of Computer Science, University of Illinois at Urbana-Champaign, Urbana, IL 61801, USA. <sup>47</sup>Department of Structural Biology and Bioinformatics, University of Geneva Medical School, CH-1211 Geneva, Switzerland. <sup>48</sup>Research School of Biology, Australian National University, Canberra, Australian Capital Territory 2601, Australia. <sup>49</sup>Roy J. Carver Center for Comparative Genomics and Department of Biology, University of Iowa, Iowa City, IA 52242, USA. <sup>50</sup>Department of Genetics and Biochemistry, Clemson University, Clemson, SC 29634, USA. <sup>51</sup>Institute of General Zoology, University of Jena, D-7743 Jena, Germany. <sup>52</sup>Faculdade de Medicina de Ribeirão Preto, Departamento de Genética, Universidade de São Paulo, Ribeirão Preto, São Paulo 14049-900, Brazil. <sup>53</sup>Department of Entomology, Commonwealth Scientific and Industrial Research Organisation, Canberra, Australian Capital Territory 2601, Australia. <sup>54</sup>Institute of Evolutionary Biology—School of Biological Sciences, University of Edinburgh, Edinburgh EH9 3JT, UK. <sup>55</sup>Vector Group, Liverpool School of Tropical Medicine, Liverpool L3 5QA, UK. <sup>56</sup>Department of Molecular, Cell, and Developmental Biology, University of California, Santa Cruz, Santa Cruz, CA 95064, USA. <sup>57</sup>Reese Consulting, 157/10 Tambon Ban Deau, Amphur Muang, Nong Khai, 43000, Thailand. <sup>58</sup>Department of Biology, Western Washington University, Bellingham, WA 98225, USA. <sup>59</sup>Department of Biological Sciences, University of Notre Dame, Notre Dame, IN 46556, USA. <sup>60</sup>Department of Organismic and Evolutionary Biology, Harvard University, Cambridge, MA 02138, USA. <sup>61</sup>School of Marine and Tropical Biology and Centre for Comparative Genomics, James Cook University, Townsville, Queensland 4811, Australia. <sup>62</sup>Department of Evolutionary Biology and Animal Ecology, University of Freiburg, 79104 Freiburg, Germany. <sup>63</sup>School of Biology, University of St Andrews, St Andrews KY16 9TH, UK. <sup>64</sup>Department of Computer Science, Royal Holloway, University of London,

Egham, Surrey TW20 0EX, UK. <sup>65</sup>Institut für Mikrobiologie und Genetik, Universität Göttingen, 37077 Göttingen, Germany. <sup>66</sup>Division of Insect Sciences, National Institute of Agrobiological Science, Tsukuba, Ibaraki 305-8634, Japan. <sup>67</sup>Department of Biology and Biocenter Oulu, University of Oulu, 90014 Oulu, Finland. <sup>68</sup>Department of Plant Sciences and Plant Pathology, Montana State University, Bozeman, MT 59717, USA. <sup>69</sup>Department of Cellular Biology, University of Georgia, Athens, GA 30602, USA. <sup>70</sup>Department of Biotechnology, Chemistry, and Food Science, Norwegian University of Life Sciences, N-1432 Ås, Norway.

\*These authors contributed equally to this work.

†To whom correspondence should be addressed. E-mail: werr@mail.rochester.edu (J.H.W.); stephenr@bcm.tmc.edu (S.R.)

‡Current address: Verhaltensbiologie, Universität Osnabrück, 49076 Osnabrück, Germany.

§Current address: Departament de Genètica i de Microbiologia, Universitat Autònoma de Barcelona, 8193 Bellaterra, Spain.

||Current address: Weill Cornell Medical College, New York, NY 10065, USA.

¶||Current address: Department of Epidemiology, University of Texas, M.D. Anderson Cancer Center, Houston, TX 77030, USA.

#### Supporting Online Material

www.sciencemag.org/cgi/content/full/327/5963/343/DC1

Materials and Methods

SOM Text

Figs. S1 to S25

Tables S1 to S57

References

22 June 2009; accepted 24 November 2009

10.1126/science.1178028

# Zebrafish Behavioral Profiling Links Drugs to Biological Targets and Rest/Wake Regulation

Jason Rihel,<sup>1\*†</sup> David A. Prober,<sup>1\*‡</sup> Anthony Arvanites,<sup>2</sup> Kelvin Lam,<sup>2</sup> Steven Zimmerman,<sup>1</sup> Sumin Jang,<sup>1</sup> Stephen J. Haggarty,<sup>3,4,5</sup> David Kokel,<sup>6</sup> Lee L. Rubin,<sup>2</sup> Randall T. Peterson,<sup>3,6,7</sup> Alexander F. Schier<sup>1,2,3,8,9†</sup>

A major obstacle for the discovery of psychoactive drugs is the inability to predict how small molecules will alter complex behaviors. We report the development and application of a high-throughput, quantitative screen for drugs that alter the behavior of larval zebrafish. We found that the multidimensional nature of observed phenotypes enabled the hierarchical clustering of molecules according to shared behaviors. Behavioral profiling revealed conserved functions of psychotropic molecules and predicted the mechanisms of action of poorly characterized compounds. In addition, behavioral profiling implicated new factors such as ether-a-go-go-related gene (ERG) potassium channels and immunomodulators in the control of rest and locomotor activity. These results demonstrate the power of high-throughput behavioral profiling in zebrafish to discover and characterize psychotropic drugs and to dissect the pharmacology of complex behaviors.

Most current drug discovery efforts focus on simple in vitro screening assays. Although such screens can be successful, they cannot recreate the complex network interactions of whole organisms. These limitations are particularly acute for psychotropic drugs because brain activity cannot be modeled in vitro (1–3). Motivated by recent small-molecule screens that probed zebrafish developmental processes (4–7), we developed a whole organism, high-throughput screen for small molecules that alter larval zebrafish locomotor behavior. We used an

automated rest/wake behavioral assay (3, 8) to monitor the activity of larvae exposed to small molecules at 10 to 30  $\mu$ M for 3 days (Fig. 1A) (3). Multiple behavioral parameters were measured, including the number and duration of rest bouts, rest latency, and waking activity (i.e., activity not including time spent at rest) (Fig. 1B) (3). We screened 5648 compounds representing 3968 unique structures and 1680 duplicates and recorded more than 60,000 behavioral profiles. Of these, 547 compounds representing 463 unique structures significantly altered behavior relative

to controls, according to a stringent statistical cutoff (3).

Because the alterations in behavior were multidimensional and quantitative, we assigned a behavioral fingerprint to each compound and applied clustering algorithms to organize molecules according to their fingerprints (Fig. 2A and figs. S1 to S3). This analysis organized the data set broadly into arousing and sedating compounds and identified multiple clusters corresponding to specific phenotypes (Fig. 2, B to F; Fig. 3, A to C; Fig. 4, B and C; and figs. S1 to S4). Clustering allowed us to address three questions: (i) Do structural, functional, and behavioral profiles overlap? (ii) Does the data set predict links between known and unknown small molecules and their mechanisms of action? (iii) Does the data set identify unexpected

<sup>1</sup>Department of Molecular and Cellular Biology, Harvard University, Cambridge, MA 02138, USA. <sup>2</sup>Harvard Stem Cell Institute, Harvard University, Cambridge, MA 02138, USA. <sup>3</sup>Broad Institute of MIT and Harvard, Cambridge, MA 02142, USA. <sup>4</sup>Stanley Center for Psychiatric Research, Broad Institute of MIT and Harvard, Cambridge, MA 02142, USA. <sup>5</sup>Center for Human Genetic Research, Massachusetts General Hospital, Boston, MA 02114, USA. <sup>6</sup>Developmental Biology Laboratory, Cardiovascular Research Center, Massachusetts General Hospital, Charlestown, MA 02129, USA. <sup>7</sup>Department of Medicine, Harvard Medical School, Boston, MA 02115, USA. <sup>8</sup>Division of Sleep Medicine, Harvard Medical School, Boston, MA 02215, USA. <sup>9</sup>Center for Brain Science, Harvard University, Cambridge, MA 02138, USA.

\*These authors contributed equally to this work.

†To whom correspondence should be addressed. E-mail: schier@fas.harvard.edu (A.F.S.); rihel@fas.harvard.edu (J.R.)

‡Present address: Division of Biology, California Institute of Technology, Pasadena, CA 91125, USA.

candidate pathways that regulate rest/wake states?

Cluster analysis revealed several lines of evidence that molecules with correlated behavioral phenotypes often shared annotated targets or therapeutic indications (Fig. 2, B to F, and figs. S1 to S4). First, drug pairs were more likely to be correlated if the compounds shared at least one annotated target (median correlation when sharing one target, 0.561 versus 0.297 when sharing zero targets; fig. S5, A and B). Second, analysis of 50 different structural and therapeutic classes revealed that drugs belonging to the same class produced highly correlated behaviors in nearly all cases (fig. S5C and fig. S6) (3). For example, several structurally diverse selective serotonin reuptake inhibitors (SSRIs) similarly reduced waking, and sodium channel agonist insecticides induced large increases in waking activity (fig. S5C and fig. S6). Third, behavioral profiling uncovered the polypharmacology of drugs with multiple targets. For example, the profile of the dopamine reuptake inhibitor and muscarinic acetylcholine receptor antagonist 3 $\alpha$ -bis-(4-fluorophenyl) methoxytropane correlated only with drugs that also shared both properties, such as the anti-Parkinson's drug trihexyphenidyl (fig. S7) (3). Fourth, modulators of the major neurotransmitter pathways often induced locomotor and rest/wake effects in zebrafish larvae similar to those seen in mammals (figs. S8 to S15) (3). For example,  $\alpha_2$ -adrenergic receptor agonists (e.g., clonidine) were sedating, whereas  $\beta$ -adrenergic agonists (e.g., clenbuterol) were arousing, as in mammals (fig. S8). These analyses indicate that compounds with shared biological targets yield similar and conserved phenotypes in our high-throughput behavioral profiling.

Detailed analyses revealed that the clustering of well-known and poorly characterized drugs could predict targets for compounds whose mode of action has been unclear (Fig. 3). For example,

the pesticide amitraz coclustered with  $\alpha_2$ -adrenergic agonists (Fig. 3A), consistent with reports that amitraz causes clonidine-like side effects in mammals and binds to  $\alpha_2$ -adrenergic receptors (9). Similarly, synaptic acid methyl ether coclustered with *N*-methyl-D-aspartate (NMDA) receptor antagonists (Fig. 3B), which suggests that the mild anxiolytic effect of synaptic acid in mice is due to NMDA receptor antagonism rather than  $\gamma$ -aminobutyric acid (GABA) receptor activation, as proposed (10). Indeed, several synaptic acid analogs are known to block NMDA-induced excitotoxicity in vitro (11, 12). Finally, MRS-1220, an adenosine A3 receptor antagonist (13), clustered with monoamine oxidase (MAO) inhibitor antidepressants (Fig. 3C). To directly test whether MRS-1220 inhibits MAO, we performed an in vitro activity assay and found a median inhibitory concentration (IC<sub>50</sub>) of  $\sim$ 1  $\mu$ M (Fig. 3D). Thus, behavioral profiling in zebrafish larvae can predict and identify targets of poorly characterized compounds.

In addition to revealing a conserved neuropharmacology between zebrafish and mammalian rest/wake states (figs. S8 to S15) (3), behavioral profiling identified additional pathways involved in rest/wake behaviors:

1) L-type calcium channel inhibitors of the verapamil class increased rest with minimal effects on waking activity (fig. S16). This is likely a direct effect on rest regulation, because average waking activity and associated muscle activity were unaffected.

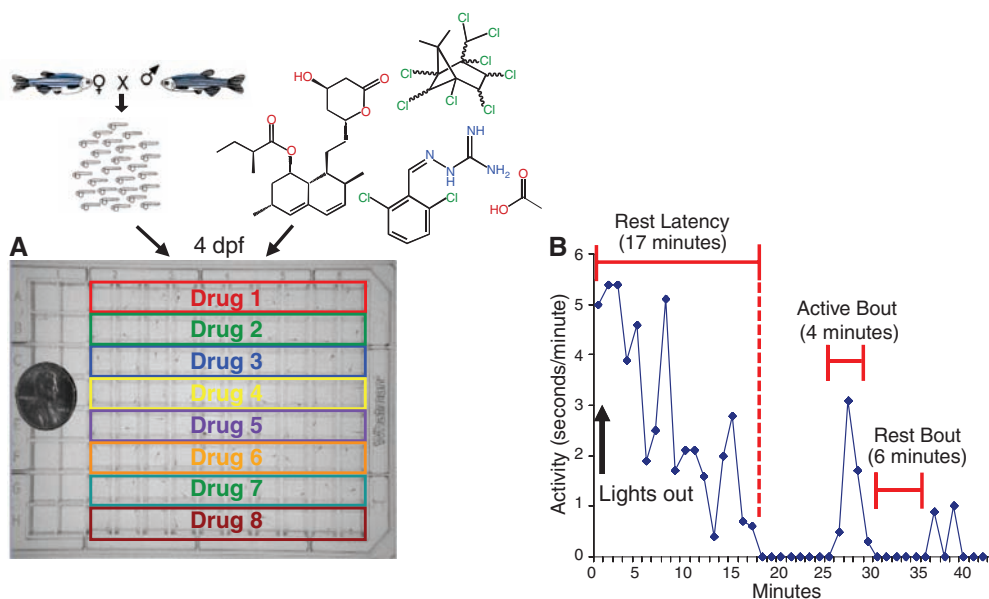
2) Cluster analysis identified two structurally related podocarpatrien-3-ones that specifically increased rest latency (Fig. 4A). These and other compounds also revealed that total rest, rest latency, and waking activity can be dissociated, indicating that these processes can be regulated by distinct mechanisms (3).

3) Although inflammatory cytokine signaling has long been known to promote sleep dur-

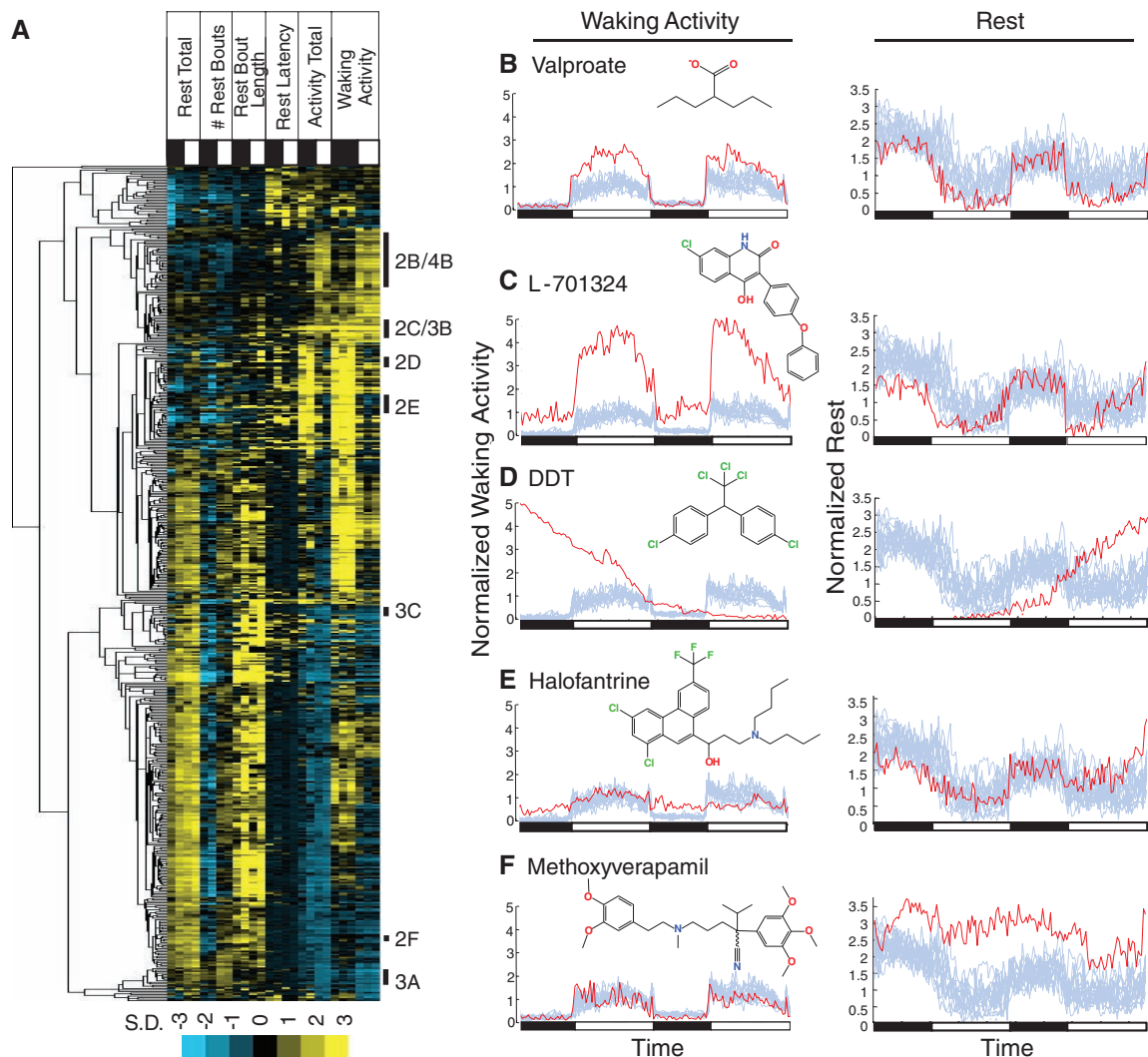
ing infection, a role for the immune system in normal vertebrate sleep/wake behavior has not been described (14). Behavioral profiling revealed that a diverse set of anti-inflammatory compounds increased waking activity during the day with much less effect at night (Fig. 4B and fig. S17). These anti-inflammatory compounds included the steroidal glucocorticoids, the nonsteroidal anti-inflammatory drugs (NSAIDs), phosphodiesterase (PDE) inhibitors, and other compounds with anti-inflammatory properties, including the immunosuppressant cyclosporine and the mood stabilizer valproic acid. Taken together, these data suggest that inflammatory signaling pathways not only induce sleep during infection (14) but also play a role in setting normal daytime activity levels.

4) Ether-a-go-go-related gene (ERG) potassium channel blockers selectively increased waking activity at night without affecting total rest (Fig. 4C and fig. S18). This phenotype was induced by compounds with divergent therapeutic indications (e.g., the antimalarial halofantrine, the antipsychotic haloperidol, the antihistamine terfenadine); however, these drugs also inhibit the ERG channel and can cause the heart rhythm disorder long QT syndrome (15, 16). Rank-sorting all the screened compounds by their fingerprints' mean correlation to the ERG-blocking cluster resulted in a significant enrichment of known ERG blockers in the top ranks (Fig. 4D). Moreover, the specific ERG inhibitor dofetilide increased nighttime activity, whereas structurally related non-ERG blocking compounds, including the antihistamines fexofenadine and cetirizine, did not (fig. S18B). Finally, this phenotype was not caused by general misregulation of potassium channels, because psora-4, a drug that blocks the related shaker potassium channel Kv1.3, induced a distinct phenotype (fig. S18A). These results suggest that ERG potassium channels play a role in regulating wakefulness at night that is distinct

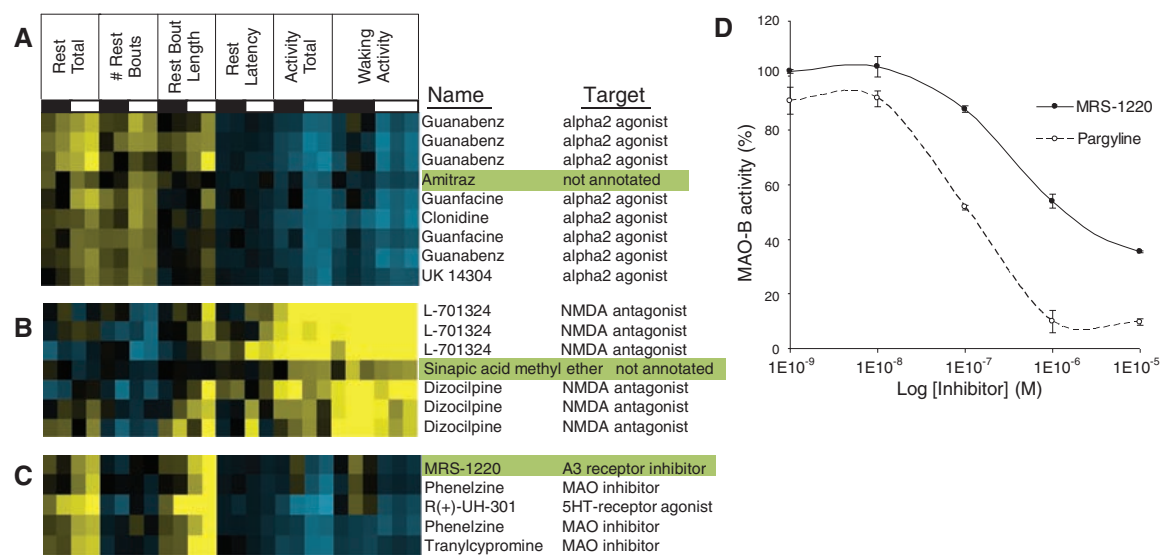
**Fig. 1.** Larval zebrafish locomotor activity assay. (A) At 4 days post-fertilization (dpf), an individual zebrafish larva is pipetted into each well of a 96-well plate with small molecules. Automated analysis software tracks the movement of each larva for 3 days. Each compound is tested on 10 larvae. (B) Locomotor activity of a representative larva. The rest and wake dynamics were recorded, including the number and duration of rest bouts [i.e., a continuous minute of inactivity (8)], the timing of the first rest bout after a light transition (rest latency), the average waking activity (average activity excluding rest bouts), and the average total activity. Together, these measurements generate a behavioral fingerprint for each compound.



**Fig. 2.** Hierarchical clustering reveals the diversity of drug-induced behaviors. **(A)** Behavioral profiles are hierarchically clustered to link compounds to behaviors. Each square of the clustergram represents the average relative value in standard deviations (yellow, higher than controls; blue, lower than controls) for a single behavioral measurement. Dark bars indicate specific clusters analyzed in subsequent figures. **(B to F)** Normalized waking activity and rest graphs are plotted for behavior-altering compounds (red trace; average of 10 larvae) and representative controls (10 blue traces; average of 10 larvae each). Compounds that altered behavior include the mood stabilizer and antiepileptic drug sodium valproate (B), the psychotomimetic NMDA antagonist L-701324 (C), the sodium channel agonist pesticide DDT (D), the antimalarial halofantrine (E), and the calcium channel blocker methoxyverapamil (F).



**Fig. 3.** Predicting primary and secondary biological targets for poorly characterized compounds. **(A)** The pesticide amitraz coclusters with  $\alpha_2$ -adrenergic agonists. **(B)** Sinapic acid methyl ether coclusters with NMDA antagonists. **(C)** MRS-1220 coclusters with MAO inhibitors. **(D)** MRS-1220 inhibits MAO-B activity in an enzymatic assay with an  $IC_{50}$  of  $\sim 1 \mu M$ . Pargyline is a known MAO-B inhibitor (19). The clusters include repeats from different chemical libraries.

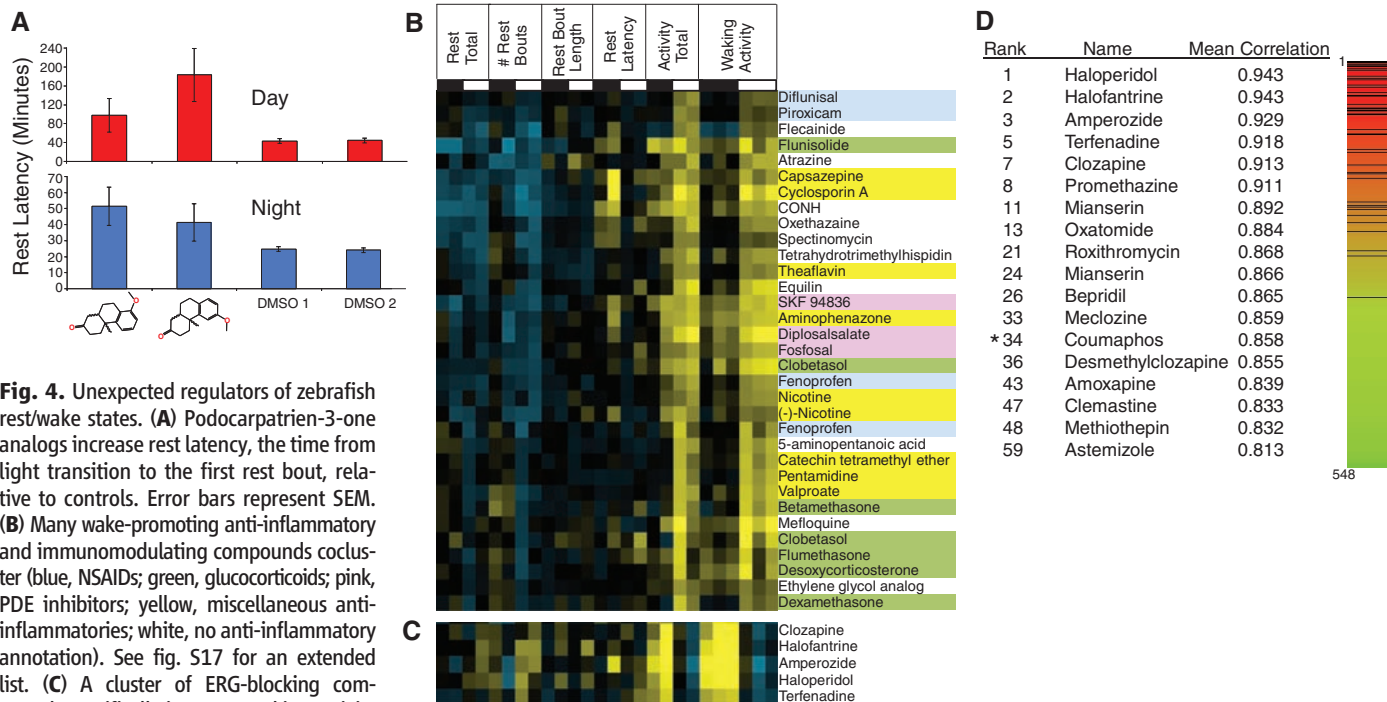


from the role of shaker channels in regulating sleep in flies and mice (17, 18).

As applied here, behavioral profiling reveals relationships between drugs and their targets,

demonstrates a conserved vertebrate neuropharmacology, and identifies regulators of rest/wake states. Our findings have two major implications for the fields of neurobiology, pharma-

cology, and systems biology. First, behavioral profiling has the potential to complement traditional drug discovery methodologies by combining the physiological relevance of in vivo



**Fig. 4.** Unexpected regulators of zebrafish rest/wake states. **(A)** Podocarpatrien-3-one analogs increase rest latency, the time from light transition to the first rest bout, relative to controls. Error bars represent SEM. **(B)** Many wake-promoting anti-inflammatory and immunomodulating compounds cocluster (blue, NSAIDs; green, glucocorticoids; pink, PDE inhibitors; yellow, miscellaneous anti-inflammatories; white, no anti-inflammatory annotation). See fig. S17 for an extended list. **(C)** A cluster of ERG-blocking compounds specifically increases waking activity at night. **(D)** Rank-sorting the data set by correlation to the ERG blocking cluster results in a significant enrichment of ERG blockers in the top ranks [ $P < 10^{-13}$  by the Kolmogorov-Smirnov statistic (3)]. Black lines indicate known ERG blockers; red indicates high correlation, green indicates low

correlation to the ERG cluster. This analysis also detected potential indirect regulators of ERG function, such as the organophosphate coumaphos (marked with an asterisk), which causes long QT through an unknown mechanism (20).

assays with high-throughput, low-cost screening (3). Future screens can be expanded to include many more uncharacterized compounds and to assay additional phenotypes, including those associated with human psychiatric disorders. In this way, behavioral profiling can characterize large classes of compounds and reveal differences in effectiveness, potential side effects, and combinatorial properties that might not be detected in vitro. Second, behavioral profiling allows for the systematic dissection of the pharmacology of complex behaviors. Our screen profiled the effects of dozens of neurotransmitter pathways and identified small molecules that regulate discrete aspects of rest/wake states. Future experiments can test drug combinations to identify synergistic or antagonistic effects among psychotropic compounds and to build interaction maps. High-throughput behavioral profiling thus may enable application of the logic and approaches of systems biology to neuropharmacology and behavior.

**References and Notes**

1. Y. Agid *et al.*, *Nat. Rev. Drug Discov.* **6**, 189 (2007).
2. M. N. Pangalos, L. E. Schechter, O. Hurko, *Nat. Rev. Drug Discov.* **6**, 521 (2007).
3. See supporting material on Science Online.
4. R. T. Peterson, M. C. Fishman, *Methods Cell Biol.* **76**, 569 (2004).
5. R. D. Murphey, H. M. Stern, C. T. Straub, L. I. Zon, *Chem. Biol. Drug Des.* **68**, 213 (2006).
6. T. E. North *et al.*, *Nature* **447**, 1007 (2007).
7. T. E. North *et al.*, *Cell* **137**, 736 (2009).
8. D. A. Prober, J. Rihel, A. A. Onah, R. J. Sung, A. F. Schier, *J. Neurosci.* **26**, 13400 (2006).
9. P. G. Jorens, E. Zandijk, L. Belmans, P. J. Schepens, L. L. Bossaert, *Hum. Exp. Toxicol.* **16**, 600 (1997).
10. B. H. Yoon *et al.*, *Life Sci.* **81**, 234 (2007).
11. A. Matteucci *et al.*, *Exp. Brain Res.* **167**, 641 (2005).
12. M. B. Wie *et al.*, *Neurosci. Lett.* **225**, 93 (1997).
13. K. A. Jacobson *et al.*, *Neuropharmacology* **36**, 1157 (1997).
14. L. Imeri, M. R. Opp, *Nat. Rev. Neurosci.* **10**, 199 (2009).
15. U. Langheinrich, G. Vacun, T. Wagner, *Toxicol. Appl. Pharmacol.* **193**, 370 (2003).
16. E. Raschi, V. Vasina, E. Poluzzi, F. De Ponti, *Pharmacol. Res.* **57**, 181 (2008).
17. C. L. Douglas *et al.*, *BMC Biol.* **5**, 42 (2007).
18. C. Cirelli *et al.*, *Nature* **434**, 1087 (2005).
19. C. J. Fowler, T. J. Mantle, K. F. Tipton, *Biochem. Pharmacol.* **31**, 3555 (1982).
20. E. Bar-Meir *et al.*, *Crit. Rev. Toxicol.* **37**, 279 (2007).
21. We thank J. Dowling, D. Milan, and G. Vanderlaan for suggestions and reagents and D. Schoppik, G. Uhl, and I. Woods for critical reading of the manuscript. Supported by a Bristol-Myers Squibb postdoctoral fellowship of the Life Sciences Research Foundation (J.R.), a Helen Hay Whitney Foundation postdoctoral fellowship (D.A.P.), a NIH Pathway to Independence grant (D.A.P.), the Stanley Medical Research Institute (S.J.H.), the Harvard Stem Cell Institute (L.L.R.), NIH grants MH086867 and MH085205 (R.T.P.), and grants from NIH and the McKnight Endowment Fund for Neuroscience (A.F.S.). L.L.R. is a founder of iPierian Inc., a biotechnology company, and is a member of its scientific advisory board.

**Supporting Online Material**

www.sciencemag.org/cgi/content/full/327/5963/348/DC1  
 Materials and Methods  
 SOM Text  
 Figs. S1 to S18  
 Table S1  
 References

8 October 2009; accepted 11 December 2009  
 10.1126/science.1183090